

# SPECGUIDE

Products & Technical Information



COMMERCIAL • INDUSTRIAL • RESIDENTIAL

RESTORATION • INFRASTRUCTURE

# SpecGuide

## CONTENTS

Section	Cleaners/ Strippers & Admixtures	
01	Whether you need to <b>remove grease, grime, or other contaminants</b> from your concrete surface, <b>soften and remove concrete buildup</b> from your tools, brighten and <b>rejuvenate existing sealer surfaces</b> , or simply <b>strip away deteriorated layers</b> , SpecChem has a formula. Our family of Cleaners & Strippers includes a variety of products that meet these application needs and more, including low VOC versions. SpecChem accelerating admixtures offer contractors flexibility in the field.	06
Section	Curing Compounds and Cure & Sealers	
02	Curing and cure & seal compounds do more than just enhance the appearance of concrete surfaces. Our line of water-based, solvent-based cures & sealers <b>improve concrete hydration, offer protection, and improve the general durability</b> of concrete surfaces.	08
Section	Decorative & Protective Sealers	
03	Each of our protective sealers are <b>specially formulated to meet a variety of applications and needs</b> . Whatever your needs, SpecChem has engineered a formula to add protection and durability to your exposed aggregate, natural stone, brick, quarry tile, terrazzo, and other concrete surfaces <b>meeting the most stringent VOC regulations</b> .	14
Section	Dry Shake Hardeners & Toppings	
04	A mix of finely graded, non-metallic quartz aggregates, plasticizer and cement binder that integrates into the concrete and produces <b>an abrasion-resistant surface</b> , perfect for lobbies, waiting rooms, showrooms and service centers, factory and warehouse, and any interior or exterior floor benefitting from <b>increased wear resistance</b> . Color options available upon request.	19
Section	Evaporation Retarders	
05	Maintaining surface moisture on concrete floors, slabs, and repairs in extreme and inclement weather conditions can be challenging. <b>SpecChem Evaporation Retarders are designed to comply with ACI 302 and reduce rapid moisture loss, preventing plastic shrinkage and cracking - without affecting the adhesion of curing compounds and other treatments</b> .	21
Section	Form Release Agents	
06	We manufacture an extensive line of release agents and supporting products formulated to <b>improve the release of formwork</b> , reduce concrete buildup on forms and liners, protect formwork against rust, and reduce necessary cleanup.	22
Section	Grouts & Anchoring Cements	
07	Our <b>cement-based, high performance, non-shrink grouts</b> are developed to provide strength and durability in a variety of specialty applications. From general, high-strength, multi-purpose grouting to flowable, non-shrink, precision applications; from metallic grouts to pumpable, wash-out resistant grouts designed for underwater use, SpecChem has a grout <b>formulated to exceed ASTM and CRD standards</b> .	27
Section	Latex Bonding Agents	
08	Our <b>acrylic bonding agents</b> are formulated to <b>provide superior adhesion and increased durability</b> of concrete, masonry, stucco, terrazzo, and Portland cement-sand mixes to horizontal and vertical concrete and more.	30

Section	Liquid Hardeners	
09	Our premium line of liquid hardeners and guards were created to provide the <b>ultimate in densifying, hardening and protection</b> for your concrete surfaces. Floors in factories, warehouses, schools, hospitals, breweries, food processing plants, service garages, and more will <b>last longer, cost less to maintain, and resist dusting</b> for years after application.	31
Section	Paving Curing Compounds	
10	Applications ranging from highways, airports, bridge decks and parking lots to city streets, curbs and gutters, all require curing compounds formulated to cure for <b>strong, durable concrete</b> that meets and exceeds the ASTM C309 Standard Specification.	34
Section	Repair Mortars	
11	Our system of <b>concrete repair and restoration products</b> is formulated for professionals who are serious about the <b>repair, stabilization, restoration and strengthening of concrete</b> projects. Our full line of professional concrete repair and restoration products features cementitious concrete patching and repair mortars – for horizontal, vertical, and overhead needs, self-leveling underlayments, polishable overlays, epoxies, and more.	37
Section	Specialty Epoxies & Polyurea Products	
12	Our performance-driven line of <b>epoxy bonding agents, crack injection</b> and joint control products, <b>specialty epoxy grouts, mortars, and sealers</b> are all based on our desire to engineer formulas that exceed their respective standards and provide premium performance for commercial and industrial applications.	48
Section	Surface Retarders	
13	Upgrade driveways, patios, walkways, pool decks, or any horizontal surface where you want to <b>reveal the true beauty of decorative aggregate</b> in concrete with SpecChem's Surface Retarders. Our easy-to-use spray-applied products are specially engineered to remove the surface of freshly placed concrete, exposing a <b>remarkable aggregate finish</b> that is both <b>durable and skid-resistant</b> .	55
Section	Tilt-Up Bond Breakers	
14	SpecChem's industry-leading tilt-up bond breaker products are <b>chemically reactive and specifically engineered to provide clean and easy lift of tilt-up panels</b> . Our bond breakers are <b>formulated to leave no residue, stain, or discoloration</b> , and contain no diesel, kerosene, waxes, or silicones.	56
Section	Water Repellents	
15	<b>Moisture</b> is, without a doubt, one of concrete's <b>worst enemies</b> . For interior and exterior above grade concrete and masonry surfaces, protecting against moisture, salts, corrosion, spalling, and deterioration is a <b>top priority</b> . Our <b>100% reactive penetrating water repellents</b> come in a variety of <b>VOC compliant</b> formulas to protect decks, pavements, parking structures, ramps, bridges, marine platforms, and more.	59
Section	Waterproofing & Damp Proofing	
16	Our <b>Max-A-Guard</b> line of VOC compliant products is specially formulated to <b>patch, repair, and protect asphalt</b> surfaces, and features our premium, DOT approved, 0 VOC asphalt cold patch. Additionally, our asphalt emulsion coatings are designed specifically for <b>waterproofing, damp proofing and protecting</b> surfaces on exterior below grade and between-slab applications.	61



# WE'VE GOT CONCRETE COVERED!

Dear SpecChem Partners,

At SpecChem, our goal is to be the leading manufacturer of the highest quality concrete construction materials supported by industry leading professionals and service. Our success relies on the innovation and ingenuity of our team and our customer network. For over 30 years, we have combined pioneering technology, industry knowledge, the highest quality materials and a massive amount of energy to create the industry's solution to its concrete material needs.

Our SpecGuide showcases the results of these efforts which feature our extensive line of concrete chemical, cementitious and epoxy products. Our offerings include liquid chemical technologies such as form release agents, cures & seals, floor sealers, densifiers, bondbreakers, and evaporation retarders, as well as cleaning and stripping products, waterproofing, damp-proofing, and asphalt products. We also manufacture a wide range of epoxy products including adhesive bonding agents, epoxy sealers, coatings, polyurea joint fillers and high-strength epoxy mortars and grouts. We formulate and manufacture a comprehensive selection of cementitious grouts, repair mortars, underlayments and overlayments, both polishable and wearable.

Additionally, our manufacturing plants and distribution centers are strategically located to serve all major markets, ensure cost-effective and on-time shipping to every market in the United States.

We are honored every day to provide construction products that build a better and more sustainable world. Thank you for choosing SpecChem and allowing us to be your solution to your concrete chemical needs.

Cheers,

Greg S. Maday,  
CHAIRMAN & CEO  
SpecChem

## Commercial

SpecChem's comprehensive product catalog, including bond breakers, protective sealers, and curing compounds, has everything you need to get the job done right the first time.



## Industrial

We manufacture an extensive line of products to help your concrete surfaces and floors last longer, improve general durability, and cost less to maintain.



## Infrastructure

For projects ranging from highways, airports, bridges, and more, SpecChem's curing compounds, asphalt patching, waterproofing, and repair products are DOT approved and VOC compliant.



## Residential

From patios, driveways, walkways, to pool decks, SpecChem's line of products has what you need to give your residential concrete the look and finish you want.



## Restoration

Our full line of concrete repair and restoration products features epoxies, polishable overlays, self-leveling underlayments, repair mortars, and more.



**SPECChem**  
Solution to Service



# INDUSTRY INVOLVEMENT

At SpecChem, we take our commitment to being an industry leader very seriously. We serve five key concrete markets – commercial, industrial, residential, DOT & infrastructure, and repair & restoration. If there's an industry trade group or association involved with these key market segments – or the industry in general – there's a pretty good chance we're involved. Some of the organizations we participate in and support:



## Cleaners/Strippers & Admixtures

Made to remove grease, grime, or other contaminants.



### Berry Clean

Berry Clean is a cost effective, natural raspberry scented, cleaner/degreaser concentrate. Berry Clean will effectively remove grease, grime, many types of carpet/tile cutback adhesives, and other contaminants from architectural concrete and other surfaces. Berry Clean will also remove acrylic and resin concrete curing compounds from concrete surfaces. Complies with all national VOC regulations, including SCAQMD/OTC/CA/VA.

Available in 1, 5, or 55 gal units



### C-Set

C-Set is an accelerating admixture for portland cement, masonry cement and stucco mortars. C-Set accelerates the hydration of cement resulting in shorter setting times and high early and overall strength.

Available in 1, 5, or 55 gal units



### K-Set

K-Set is a non-corrosive, non-chloride accelerating admixture. K-Set accelerates the hydration of cement, resulting in shorter set times and high early strength. K-Set provides improved workability, helps prevent segregation, and is a substantial aid in early stiffening for mortar and stucco mixes. K-Set is an aqueous solution of organic and inorganic compounds that produces rapid heat development within the mortar, protecting it from freezing during its early life at low temperatures.

Available in 1, 5, or 55 gal units



### Orange Peel

Orange Peel concentrate is a cost effective, natural citrus solvent, cleaner and degreaser. Orange Peel is an innovative solution for the toughest industrial applications. Orange Peel will effectively remove grease, grime, and other contaminants from architectural concrete.

Available in 1, 5, or 55 gal units





### Sealer ReNew

Sealer ReNew is a specially blended high-strength solvent formulated to brighten and rejuvenate existing decorative acrylic sealers. Sealer ReNew can also be used to clean or strip deteriorated sealer and to release moisture blush (whitening) trapped beneath the sealer.

Available in 1, 5, or 55 gal units



### Solvent 100

Solvent 100 is a clear, colorless, non-flammable, high-strength solvent formulated specifically as a thinner and clean up material for resin-based compounds.

Available in 1, 5, or 55 gal units



### SpecBlast

SpecBlast is a chemically reactive liquid formulated to soften and remove concrete buildup from concrete tools and equipment. SpecBlast is designed to help avoid the damaging effects of sandblasting, bush hammering, and jackhammering hardened concrete from equipment.

Available in 1, 5, or 55 gal units



### Xylene

Xylene is a clear, colorless, flammable, high-strength solvent formulated specifically as a thinner and clean up material for resin-based compounds. Xylene has a greater solvency strength (KB Value) than SpecChem Solvent 100 or mineral spirits.

Available in 1, 5, or 55 gal units

SAFE AND EFFECTIVE



Looking for a high-quality cleaner and degreaser that *meets the stringent VOC guidelines for SCAQMD/OTC/CA/VA?*

With a VOC content of less than 25 grams per liter, **Berry Clean** is perfect for removing adhesives and other tough contaminants from your concrete surfaces, while remaining safe and effective, even in the most regulated areas.



## Curing Compounds and Cure & Sealers

Formulated to improve hydration, durability, and offer protection.



### Crystal Rez

Crystal Rez is a clear, dissipating, resin water-based emulsion curing compound for use on freshly finished horizontal and vertical concrete surfaces. Crystal Rez is formulated to provide an effective curing membrane that will dry to a clear (non-yellowing) membrane. Crystal Rez will provide a more cost effective alternative to cure & seals without the unsightly yellow/amber appearance of other dissipating resins. May contribute to **LEED credits. ASTM C309 Type 1 and 1-D, Class A & B** compliant.

Available in 5 or 55 gal units



### Cure & Seal 25

Cure & Seal 25 is a VOC compliant, non-yellowing, acrylic polymer engineered to cure, seal, harden, and dustproof freshly placed concrete and improve the wearability and durability of aged concrete surfaces. Cure & Seal 25 provides a tough glossy film that is resistant to abrasion and common staining materials, reduces clean-up costs, brightens floors, and improves concrete's resistance against de-icing salts. **ASTM C309, Type 1, classes A & B** and **ASTM C1315 Class A** compliant.

Available in 5 or 55 gal units



### Cure & Seal 25 EX

Cure & Seal 25 EX is a VOC compliant, non-yellowing, acrylic polymer engineered to cure, seal, harden, and dustproof freshly placed concrete and improve the wearability and durability of aged concrete surfaces. Cure & Seal 25 EX is formulated with a unique solvent blend allowing fast-drying, solvent-based performance along with VOC compliance in the **OTC/LADCO/MRPO** regions. **ASTM C309, Type 1, Class A & B** and **ASTM C1315 Class A** compliant.

Available in 5 or 55 gal units





### Cure & Seal 25 UV

Cure & Seal 25 UV is a VOC compliant, acrylic non-yellowing polymer engineered to cure, seal, harden, and dustproof freshly placed concrete and improve the wearability and durability of aged concrete surfaces. Cure & Seal 25 UV is formulated to provide maximum color stability in a high-gloss finish. Cure & Seal 25 UV is stable under ultra-violet light and is suitable for both exterior and interior use. **ASTM C309, Type 1, Class A & B** and **ASTM C1315 Class A, Type 1** compliant.

Available in 5 or 55 gal units



### Cure & Seal 25 UV EX

Cure & Seal 25 UV EX is a VOC compliant, non-yellowing, acrylic polymer engineered to cure, seal, harden, and dustproof freshly placed concrete and improve the wearability and durability of aged concrete surfaces. Cure & Seal 25 UV EX is formulated with a unique solvent blend allowing fast-drying, solvent-base performance along with VOC compliance in the **OTC/LADCO/MRPO** regions. **ASTM C309, Type 1, Class A & B** and **ASTM C1315 Class A** compliant.

Available in 5 or 55 gal units



### Cure & Seal 30

Cure & Seal 30 is a high-solids, VOC compliant, acrylic polymer engineered to cure, seal, harden, and dustproof freshly placed concrete and improve the wearability and durability of aged concrete surfaces. Cure & Seal 30 provides a tough, glossy film that is resistant to abrasion and common staining materials, reduces clean up costs, brightens floors, and improves concrete's resistance against de-icing salts. **ASTM C309, Type 1, Class A & B** and **ASTM C1315, Class A** compliant.

Available in 5 or 55 gal units



### Cure & Seal 30 EX

Cure & Seal 30 EX is a high-solids, VOC compliant, acrylic polymer engineered to cure, seal, harden, and dustproof freshly placed concrete and improve the wearability and durability of aged concrete surfaces. Cure & Seal 30 EX is formulated with a unique solvent blend allowing fast-drying, solvent-based performance along with VOC compliance in the **OTC/LADCO/MRPO** regions. **ASTM C309, Type 1, Class A & B** and **ASTM C1315, Class A** compliant.

Available in 5 or 55 gal units



### Cure & Seal WB

Cure & Seal WB is a water-based, non-yellowing, VOC compliant acrylic polymer engineered to cure, seal, harden, and dustproof freshly placed concrete and improve the wearability and durability of aged concrete surfaces. May contribute to **LEED credits**. **ASTM C309, Type 1, Class A & B** and **ASTM C1315** compliant.

Available in 5 or 55 gal units



### Cure & Seal WB 25

Cure & Seal WB 25 is a high-solids, water-based, non-yellowing, VOC compliant, acrylic polymer engineered to cure, seal, harden, and dustproof freshly placed concrete and improve the wearability and durability of aged concrete surfaces. Cure & Seal WB 25 provides a tough, glossy film that is resistant to abrasion and common staining material, prevents the adhesion of cementitious droppings, and brightens floors. **ASTM C309, Type 1, Class A & B** and **ASTM C1315 Type 1, Class A** compliant.

Available in 5 or 55 gal units



### Cure & Seal WB 30

Cure & Seal WB 30 is a high-solids water-based, VOC compliant acrylic polymer engineered to cure, seal, harden, and dustproof freshly placed concrete and improve the wearability and durability of aged concrete surfaces. Cure & Seal WB 30 provides a tough glossy film that is resistant to abrasion and common staining material, prevents the adhesion of cementitious droppings, and brightens floors. **ASTM C309, Type 1, Class A & B** and **ASTM C1315 Type 1, Class A** compliant.

Available in 5 or 55 gal units



### Cure Shield

Cure Shield is a unique solvent-based blend of silane and pure, non-yellowing, acrylic copolymers designed to cure, seal, harden, and dustproof fresh concrete and provide additional protection to existing concrete. In addition to forming an effective film-forming curing and sealing compound, it also contains silane. Silane penetrates the fresh concrete and provides protection against spalling and deterioration of concrete structures caused by de-icing salts. **ASTM C309, Type 1, Class B** and **ASTM C1315 Type 1, Class B** compliant.

Available in 5 or 55 gal units

## Industry Knowledge



### WHAT IS ASTM C309?

Standard Specification for Liquid Membrane-Forming Compounds for Curing Concrete

ASTM C309 is the most common concrete curing specification in use today. It covers liquid membrane-forming compounds suitable for application to concrete surfaces to reduce the loss of water during the early-hardening period. According to ASTM.org, ASTM C309 states that the curing compound must form a membrane that has moisture retention properties equaling 0.55 Kg/M2 in 72 hours when applied at 200 square feet per gallon.

The physical appearance is described by three types, and the solids characterized by two classes:

- |   |  |
|---|--|
| Type 1 - clear or translucent, without dye.         | Class A – no restriction on vehicle solids in the curing compound. |
| Type 1-D – clear or translucent, with fugitive dye. |  |
| Type 2 – white pigmented.                           | Class B – vehicle solids restricted to all resin material.         |

Exclusion: Sodium Silicate based curing compounds are excluded.

Drying time: The liquid membrane-forming compound shall be dry to the touch in not more than 4 hours.





### Cure Shield EX

Cure Shield EX is a unique solvent-based blend of silane and pure, non-yellowing, acrylic copolymers designed to cure, seal, harden, and dustproof fresh concrete and provide additional protection to existing concrete. In addition to creating an effective film-forming curing and sealing compound, it also contains silane. Silane penetrates the fresh concrete and provides protection against spalling and deterioration of concrete structures caused by de-icing salts. **ASTM C309, Type 1, Class B** and **ASTM C1315 Type 1, Class B** compliant.

Available in 5 or 55 gal units



### E-Cure®

E-Cure is a clear concrete curing compound developed using innovative technology to cure concrete as well as resolve compatibility issues related to flooring adhesives. E-Cure is a spray-applied concrete cure, hardener, and dustproof. E-Cure penetrates and forms a temporary membrane to cure, densify, harden, and dustproof concrete, and is essential for maximum strength development. Meets the moisture retention requirements of **ASTM C309 Type 1 and 1-D, Class A & B** on hard-troweled concrete surfaces. May contribute to **LEED credits**.

Available in 5 or 55 gal units



### SC Cure 500®

SC Cure 500® is a technologically advanced concrete curing compound formulated to cure hard-troweled concrete that is expected to be treated with a lithium silicate hardener/densifier, such as LithSeal SC. SC Cure 500® penetrates and forms a temporary membrane to cure, densify, harden and dustproof concrete, and is essential for maximum strength development. Meets the moisture retention requirements of **ASTM C309 Type 1 and 1-D, Class A & B** on hard-troweled concrete surfaces. May contribute to **LEED credits**.

Available in 5 or 55 gal units



### SpecRez

SpecRez is a water-based dissipating resin-based emulsion curing compound for use on freshly finished horizontal and vertical concrete surfaces. SpecRez is formulated to provide an effective curing membrane that will begin to dissipate after exposure to sunlight, weathering and/or traffic. May contribute to **LEED credits. ASTM C309 Type 1 and 1-D, Class A & B** compliant.

Available in 5 or 55 gal units



## PROJECT HIGHLIGHT



## Amazon Warehouse

### Cure & Seal 30 EX, Cure & Seal WB 30

Prologis Etna is a state-of-the-art, master-planned business park project anchored by a 1.5 million sq. ft. Amazon fulfillment center strategically located in Columbus, Ohio. We worked closely with the general contractor, Clayco, the concrete contractor, Unlimited Concrete Solutions, and Amazon to find the best possible product solution for curing and sealing the interior base and elevated slabs in less than optimal weather and conditions.

Unlimited Concrete used 50 drums of Cure & Seal 30 EX on the interior base slabs. By using a solvent-based cure and seal, Unlimited Concrete was able to pour and seal in colder-than-normal winter conditions. Over 60 drums of Cure & Seal WB 30 were used on the elevated slabs the following spring.

## Industry Knowledge



### WHAT IS ASTM C1315?

**ASTM C1315 replaces TTC-0800 as the curing and sealing specification for the industry.**

This specification covers the performance requirements for membrane-forming liquids suitable for use as curing compounds and sealers for fresh and hardened concrete. Each membrane should have good alkali resistance, acid resistance, adhesion-promoting qualities, and resistance to degradation by UV light. The materials are limited to clear or translucent and white pigmented materials, all of which are classified into non-yellowing, moderately yellowing, or yellows or darkens unrestrictedly.

Type 1 - clear or translucent.

Type 2 - white pigmented.

Class A - non-yellowing, Gardner Color Standard No. 1

Class B - Moderate yellowing, Gardner Color Standard No. 3

Class C - Severe darkening and yellowing.

Minimum Solids Content: Type 1 and 2 are both a minimum of 25%



# WELCOME TO THE GOLD STANDARD

The Highest Quality Premium Concrete Chemicals

**SPEC**CHEM  
Solution to Service



**The Industry's Gold Standard for quality and innovation in concrete curing compounds.**

E-Cure® is the most technologically innovative product in the last 30 years of concrete curing compounds. *Nothing* on the market cures, hardens, dustproofs, and deals with floor adhesive problems like SpecChem's E-Cure®.

0 VOCs | ASTM C309 Type 1D Class A&B compliant | USDA Accepted | NSF/ANSI 61 Certified

[www.specchem.com](http://www.specchem.com) | 816.968.5600



## Decorative & Protective Sealers

Specially formulated to meet a variety of applications and needs.



The strength and durability of the concrete will only be fully achieved if it is cured properly. It is very important to cure and seal concrete immediately after final finishing. The process of curing is essential in that it helps to:

- Reduce curling, scaling and crazing
- Reduce plastic shrinkage cracks
- Allow for a more uniform color
- Reduce dusting
- Achieve proper hydration of concrete for maximum strength and durability

### Aqua Shine

Aqua Shine is a water-based, methacrylate cure and sealer developed for interior and exterior applications, such as exposed aggregate, natural stone, brick, quarry tile, terrazzo, and other concrete surfaces. This non-yellowing, low odor, durable sealer enhances the appearance of all treated surfaces with a wet look, satin sheen. Aqua Shine protects sealed surfaces from the damaging effects of de-icing salts, and acts as a binder to minimize aggregate pop-out.

Available in 1, 5, or 55 gal units







## Crystal Shine

(Available in High Solids)

Crystal Shine is a lacquer sealer developed for interior and exterior applications to bring out the radiance and luster of exposed aggregate and other decorative concrete surfaces with a durable protective finish. Crystal Shine is ideal for stained concrete, exposed aggregate slabs, walkways, swimming pool decks, and walls. Crystal Shine is formulated with a unique solvent blend allowing fast-drying, solvent-based performance along with VOC compliance in the **OTC/LADCO/MRPO/SCAQMD** regions.

Available in 1, 5, or 55 gal units



## Crystal Shine Matte

Crystal Shine Matte is a lacquer sealer developed for interior and exterior applications to bring out the radiance and luster of exposed aggregate and other decorative concrete surfaces with a durable protective coating that produces a subtle, satin "matte" finish. Crystal Shine Matte is ideal for stained concrete, exposed aggregate slabs, walkways, swimming pool decks and walls. Crystal Shine Matte is formulated with a unique solvent blend allowing fast-drying, solvent-based performance along with VOC compliance in the **OTC/LADCO/MRPO/SCAQMD** regions.

Available in 1, 5, or 55 gal units



## Deco Shine

Deco Shine is a methacrylate cure and sealer developed specifically for exterior applications, including exposed aggregate and other decorative concrete surfaces. Deco Shine provides a clear, protective coating that brings out the radiance and luster of all natural aggregate and preserves a long lasting, durable finish.

Available in 1, 5, or 55 gal units



## Deco Shine Matte

Deco Shine Matte is a methacrylate cure and sealer developed specifically for exterior applications, including exposed aggregate and other decorative concrete surfaces. Deco Shine Matte provides a clear, protective coating that produces a subtle, satin "matte" finish that highlights the color and texture of surfaces without excessive shine. Deco Shine Matte is ideal for stained concrete, exposed aggregate slabs, walkways, swimming pool decks, and walls.

Available in 1, 5, or 55 gal units



## Surface Grip

Surface Grip is a finely ground, slip-resistant polymer additive designed specifically to improve the slip resistance of film forming sealers. Surface Grip can be added to all SpecChem and most other manufacturer's water and solvent-based film-forming sealers. It is ideal for use on surfaces where water or moisture can accumulate, such as pool decks, garage floors, driveways, patios, walkways, and other smooth surfaces.

3.2 oz. or 15 oz. bottles

# ENGINEERED TO PROTECT

The Highest Quality Concrete Chemicals

**SPEC**CHEM  
Solution to Service



**SpecChem's line of decorative and water-based sealers is specially engineered to protect your new and existing concrete, masonry surfaces, decks, pavements, and more.**

Emphasizing radiance and luster of exposed aggregate and other decorative concrete surfaces with a durable protective finish.





**Surface Shine**

Surface Shine is a transparent, high-gloss, non-yellowing acrylic polymer engineered as a cure and seal specifically for exterior surfaces such as exposed aggregate, natural stone, brick, quarry tile, terrazzo, and other concrete surfaces. It is also suitable for interior applications. This non-yellowing, durable sealer enhances the appearance of all treated surfaces with a high-gloss sheen.

Available in 5 or 55 gal units



**Surface Shine Brown**

Surface Shine Brown is a VOC compliant acrylic polymer engineered to cure, seal, harden, and dustproof freshly placed concrete and improve the wearability and durability of aged concrete surfaces. Surface Shine Brown is a light brown pigmented acrylic sealer that dries to a medium to light brown finish and enhances and tints the cement paste of Merrimack Brown exposed aggregate surfaces.

Available in 5 or 55 gal units



**Surface Shine Brown EX**

Surface Shine Brown EX is a VOC compliant brown pigmented acrylic polymer engineered to cure, seal, harden, and dustproof freshly placed concrete and improve the wearability and durability of aged concrete surfaces. Surface Shine Brown EX is a light brown pigmented sealer that enhances and tints the cement paste of Merrimack Brown exposed aggregate surfaces.

Available in 5 gal units



**Surface Shine Gray**

Surface Shine Gray is a VOC compliant acrylic polymer engineered to cure, seal, harden, and dustproof freshly placed concrete and improve the wearability and durability of aged concrete surfaces. Surface Shine Gray is a light gray pigmented acrylic sealer that dries to a medium to light gray finish.

Available in 5 or 55 gal units



**Surface Shine Gray EX**

Surface Shine Gray EX is a VOC compliant gray pigmented acrylic polymer engineered to cure, seal, harden, and dustproof freshly placed concrete and improve the wearability and durability of aged concrete surfaces. Surface Shine Gray EX is formulated with a unique solvent blend allowing fast-drying, solvent-based performance along with VOC compliance in the **OTC/LADCO/MRPO** regions.

Available in 5 gal units



**Surface Shine EX**

Surface Shine EX is a VOC compliant, high-gloss, non-yellowing acrylic polymer engineered as a cure and seal specifically for exterior surfaces such as exposed aggregate, natural stone, brick, quarry tile, terrazzo, and other concrete surfaces. Surface Shine EX is formulated with a unique solvent blend allowing fast-drying, solvent-based performance along with VOC compliance in the **OTC/LADCO/MRPO** regions.

Available in 5 or 55 gal units



**Surface Shine WB**

Surface Shine WB is a high-solids, water-based, non-yellowing acrylic polymer engineered as a sealer specifically for exterior surfaces such as exposed aggregate, natural stone, brick, quarry tile, terrazzo, and other concrete surfaces. It is also suitable for interior applications. This non-yellowing, low odor, durable sealer enhances the appearance of all treated surfaces with a high-gloss sheen.

Available in 5 or 55 gal units

**ABOUT SPECICHEM**

**SpecChem R&D**

With a state-of-the-art laboratory based in one of our Kansas City plants and quality control labs in every plant around the country, our research and development and quality control teams are on top of everything, from ensuring every batch of product we ship meets industry standards to exploring new and exciting products to meet your demands.

Our investment in research and development is one of our key differentiators in establishing SpecChem as a best-in-class manufacturer. On-going updates to our laboratory and quality control facilities, combined with some of the most knowledgeable and experienced minds in the industry, help ensure that we are doing more than just serving our customers – we’re fostering innovation in the industry.





# Dry Shake Hardeners & Toppings

Designed to increased wear resistance on heavy traffic floors.



## Quartz Floor Hardener

Quartz Floor Hardener is a mixture of finely graded non-metallic quartz aggregates, plasticizer, and cement binder. It is an economical concrete floor hardener recommended for both interior and exterior use. When applied at the proper point in the concrete setting cycle, Quartz Floor Hardener is worked into the concrete to become an integral part of the floor to provide a surface which is highly resistant to abrasion. **ACI 302, ACI 305, ACI 306** compliant. Available in the following colors; Light Reflective, Tile Red, Nile Green, French Gray, Battleship Gray.

Available in 50 lb. bags



## SpecPlate Floor Topping

SpecPlate Floor Topping is an industrial metallic aggregate floor topping which provides heavy duty abrasion and impact resistance to existing or new concrete floors. SpecPlate Floor Topping combines clean, graded, iron aggregate with special cements and admixtures to increase abrasion resistance up to 8 times more than 4000 psi concrete.

Available in 50 lb. bags as well as 3,000 lb. super sacks



## SpecPlate Hardener

SpecPlate Hardener is a well graded blend of metallic aggregates, plasticizer and cement binder. It provides maximum abrasion-resistance to interior concrete floors. When incorporated into fresh concrete slabs, SpecPlate Hardener will provide a surface which is highly resistant to abrasion, impact and point loading even in areas subject to frequent moisture and water exposure. SpecPlate Hardener, mixed as a mortar, is also used to construct iron armored joints. SpecPlate Hardener is available in a natural concrete color.

Available in 50 lb. bags



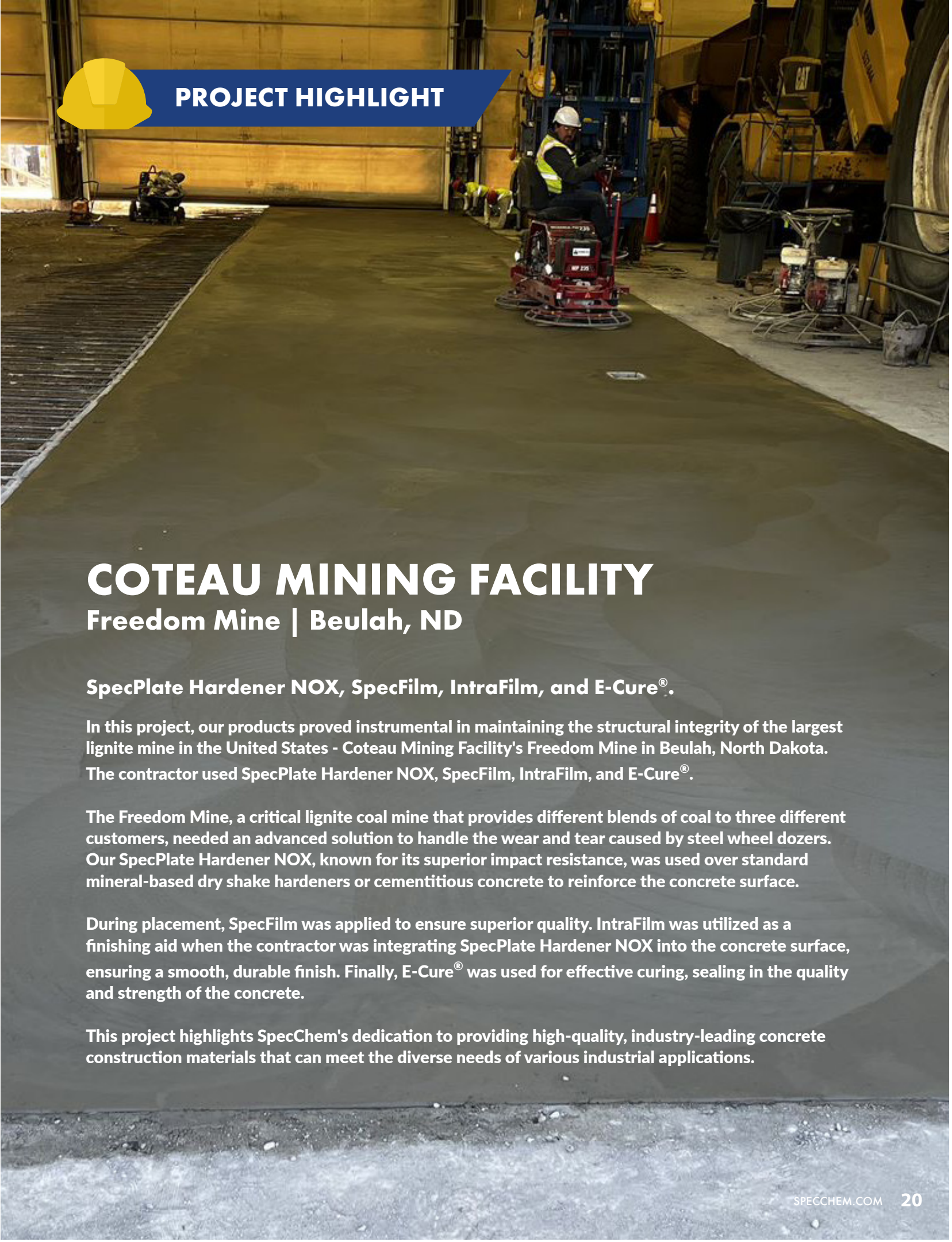
## SpecPlate NOX

SpecPlate NOX is a well graded blend of nonoxidizing metallic aggregates, plasticizer and cement binder. It provides maximum abrasion-resistance to interior concrete floors. When incorporated into fresh concrete slabs, SpecPlate NOX will provide a surface which is highly resistant to abrasion, impact and point loading even in areas subject to frequent moisture and water exposure. SpecPlate NOX, mixed as a mortar, is also used to construct iron armored joints. SpecPlate NOX is available in a natural Concrete Gray and a Light Reflective color.

Available in 50 lb. bags



## PROJECT HIGHLIGHT



# COTEAU MINING FACILITY

## Freedom Mine | Beulah, ND

### SpecPlate Hardener NOX, SpecFilm, IntraFilm, and E-Cure®.

In this project, our products proved instrumental in maintaining the structural integrity of the largest lignite mine in the United States - Coteau Mining Facility's Freedom Mine in Beulah, North Dakota. The contractor used SpecPlate Hardener NOX, SpecFilm, IntraFilm, and E-Cure®.

The Freedom Mine, a critical lignite coal mine that provides different blends of coal to three different customers, needed an advanced solution to handle the wear and tear caused by steel wheel dozers. Our SpecPlate Hardener NOX, known for its superior impact resistance, was used over standard mineral-based dry shake hardeners or cementitious concrete to reinforce the concrete surface.

During placement, SpecFilm was applied to ensure superior quality. IntraFilm was utilized as a finishing aid when the contractor was integrating SpecPlate Hardener NOX into the concrete surface, ensuring a smooth, durable finish. Finally, E-Cure® was used for effective curing, sealing in the quality and strength of the concrete.

This project highlights SpecChem's dedication to providing high-quality, industry-leading concrete construction materials that can meet the diverse needs of various industrial applications.





## Evaporation Retarders

Designed to reduce moisture loss and prevent shrinkage and cracking.



## Form Release Agents

Products that improve the release of your formwork.



### IntraFilm

IntraFilm is a reactive colloidal silica densifier and finishing aid that lubricates freshly placed concrete for faster and easier finishing and prolonged workability in adverse conditions, such as high temperatures, high wind or low humidity.

Available in 1, 5, or 55 gal units



### Bio Strip WB

Bio Strip WB is a 100% natural, biodegradable, petroleum-free, chemically reactive release agent, ideal for sensitive environmental situations such as bridge formwork over rivers and streams or potable water reservoirs. Bio Strip WB provides quick, easy release and leaves an architectural bondable concrete surface.

Available in 5, 55, and 275 gal units



### IntraFilm Concentrate

IntraFilm Concentrate when diluted 4 to 1 (water to concentrate) is a reactive colloidal silica densifier and finishing aid that lubricates freshly placed concrete for faster and easier finishing and prolonged workability in adverse conditions, such as high temperatures, high wind or low humidity.

Available in 1, 5, or 55 gal units



### Bio Strip WB Concentrate

Bio Strip WB Concentrate is a 100% biodegradable, chemical release agent emulsion concentrate that, when properly diluted with water, (4-to-1) provides a positive release ideal for sensitive environmental situations such as bridge formwork over rivers and streams or potable water reservoirs. Bio Strip WB Concentrate provides quick, easy release on wood, steel, aluminum, and elastomeric liners and leaves an architectural bondable concrete surface.

Available in 5, 55, and 275 gal units



### SpecFilm

SpecFilm is designed to be used as an evaporation retardant and finishing aid on concrete flatwork of all types. When sprayed over fresh concrete, SpecFilm forms a thin, continuous film which prevents rapid moisture loss from the concrete surface. SpecFilm is especially effective when concreting operations must be performed in direct sun, wind, high temperatures, or low relative humidity.

Available in 1, 5, or 55 gal units



### Deco Liquid Release

Deco Liquid Release is a colorless liquid release formulated and recommended for use with decorative, elastomeric concrete texturing mats. It forms a lubricating barrier that prolongs the life of the imprinting tools by decreasing the friction between the mats and the concrete.

Available in 5, 55, and 275 gal units



### SpecFilm Concentrate

SpecFilm Concentrate is an economical concentrate that can be diluted with potable water up to a 9-to-1 ratio, providing a very effective evaporation retardant and finishing aid for concrete flatwork. Once diluted and sprayed over fresh concrete, SpecFilm forms a thin, continuous film which prevents rapid moisture loss from the concrete surface.

Available in 1, 5, or 55 gal units





## PROJECT HIGHLIGHT



# SPORTING KANSAS CITY

## Children's Mercy Park

**Bio Strip WB, E-Cure®, SpecRez, All Shield, Duo Patch, RepCon® V/O, SC Multi-Purpose Grout**

Children's Mercy Park, home of MLS team Sporting Kansas City, is an award-winning 18,500-seat stadium hosting Major League Soccer matches and other field sports, with additional capacity of up to 27,000 for concerts.

The facility includes a number of amenities for players, including a high-end clubhouse area, complete with hydrotherapy room, shower areas, cardiology workout rooms, and players' lounges, as well as locker rooms, the team doctor's office, reception and maintenance areas, and administrative and support areas. An outdoor plaza area located on the west side of the stadium is utilized for concerts and private events.

SpecChem's system of environmentally friendly chemical solutions were utilized during all concrete phases of construction. Bio Strip WB ensured a clean, consistent, architectural release on all concrete from the first tie-back walls, piers, and footings to final field-level walls, stairs, and risers. E-Cure® was applied to columns, as well as all interior hard-troweled slabs to cure, densify and strengthen. SpecRez was used as the curing compound on all exterior slabs. Finally, All Shield was used as a concrete protectant and stain repellent in all food service areas for its remarkable resistance to oil, water, food stains, and other liquid contaminants.



### Dry-Deck WB

Dry-Deck WB dries to form a durable, clear, waxy film which chemically reacts with the concrete to produce a smooth, architectural concrete finish. Dry-Deck WB provides quick, easy release and leaves an architectural bondable concrete surface.

Available in 5, 55, and 275 gal units



### EZ Clean & Release

A ready-to-use highly-reactive mixture that, when properly applied to concrete forms with concrete buildup, will soften the hardened concrete and "self-clean" as the forms are stripped.

Available in 5, 55, and 275 gal units



### Form Seasoning WB

Form Seasoning WB is a water-based treatment for new aluminum forms. It oxidizes the elemental aluminum on the surface of new aluminum forms to properly season and prepare them for use. Once seasoned, use a quality reactive form release agent like SpecStrip to produce a clean release.

Available in 5, 55, and 275 gal units



### Precast 80

Precast 80 is a chemically reactive, fast-drying mineral oil based, concrete release agent specially engineered to positively prevent bonding of the concrete to forms in precast and shop use applications. Precast 80 prevents rust and leaves no residue. Contains no diesel, waxes or silicones.

Available in 5, 55, and 275 gal units



### SpecStrip

(Available in Ultra Low VOC)

SpecStrip is a chemically reactive mineral oil based concrete release agent specially engineered to positively prevent bonding of the concrete to forms and form liners, and contains no waxes or silicones. SpecStrip is made to improve the release of formwork, reduce concrete buildup on formwork and liners, reduce cleaning of formwork, prevent rust on forms, and reduce stains or discoloration.

Available in 5, 55, and 275 gal units



# SIMPLE STEPS TO THE ALUMINIUM FORMING SYSTEM

## 1 Season Form Seasoning WB

Form Seasoning WB is a water-based treatment for new aluminum forms. It oxidizes the elemental aluminum on the surface of new aluminum forms to properly season and prepare them for use.



## 2 Prevent SpecStrip

SpecStrip is a chemically reactive release agent specially engineered to positively prevent bonding of the concrete to forms and form liners.



## 3 Release TriAct

TriAct is a concentrated, highly-reactive petroleum mixture that, when properly diluted, can be used as a reactive form release agent, an aluminum form "seasoning" agent, and a softener and maintenance coating.



## 4 Remove SpecBlast

A chemically reactive liquid formulated to soften and remove concrete buildup from concrete tools and equipment. SpecBlast is designed to help avoid the damaging effects of sandblasting, bushhammering and jackhammering hardened concrete from equipment.



**SAFE AND EFFECTIVE**



### Looking for a low VOC form release agent that contributes to LEED credits?

Our green-conscious **Bio Strip WB** is our 100% natural, organic, chemically reactive release agent, and is ideal for sensitive environmental situations such as bridge formwork over rivers and streams or potable water reservoirs. **Bio Strip WB** provides a quick and easy release, leaving an architectural bondable surface with no residue. And with a VOC content of less than 20 grams per liter, **Bio Strip WB** meets the stringent emissions requirements for OTC and SCAQMD.



### SpecStrip Plus

SpecStrip Plus is a premium chemically reactive mineral oil based, concrete release agent designed to positively prevent bonding of the concrete to wood, steel, and aluminum forms. SpecStrip Plus contains no diesel, kerosene, waxes, or silicones. SpecStrip Plus offers superior performance, improving release of formwork, reducing concrete buildup on formwork, and prevents rust on forms. Leaves no residue or stains.

Available in 5, 55, and 275 gal units



### SpecStrip Supreme

SpecStrip Supreme is a highly refined chemically reactive mineral oil based, concrete release agent specially engineered to positively prevent bonding of the concrete to forms and form liners, protect forms from rust, reduce concrete buildup on formwork and liners, and leave no residue or stains. SpecStrip Supreme contains no diesel, kerosene, waxes or silicones.

Available in 5, 55, and 275 gal units



### SpecStrip 100 VOC

SpecStrip VOC 100 is a highly refined, chemically reactive mineral oil based, concrete release agent specially engineered to positively prevent bonding of the concrete to forms and form liners while complying with the most stringent VOC regulations, including SCAQMD. When properly applied, SpecStrip VOC 100 will not leave any residue or stain on the concrete, producing a smooth, architectural concrete surface ready for subsequent coatings. **SCAQMD** compliant.

Available in 5, 55, and 275 gal units



### SpecStrip WB

SpecStrip WB is a reactive water-based, emulsified mineral oil release agent for all types of concrete forms. Forms treated with SpecStrip WB release easily, minimizing the number of bug holes. SpecStrip WB will not damage styrene bead or form liners, and leaves a coating on steel forms that inhibits rust. May contribute to **LEED credits**.

Available in 5, 55, and 275 gal units



### TriAct

TriAct is a concentrated, highly reactive mineral oil based, concrete mixture that, when properly diluted, can be used as a reactive form release agent, an aluminum form "seasoning" agent, or a concrete softener and maintenance coating. This versatility reduces the need to inventory multiple products.

Available in 5, 55, and 275 gal units





# Grouts & Anchoring Cement

Providing strength and durability in a variety of specialty applications.



## SC Metallic Grout

SC Metallic Grout is a non-shrink metallic cement-based grout designed for industrial applications subjected to dynamic and repetitive loading. SC Metallic Grout does not contain chloride and is formulated for a wide variety of grouting applications, from drypack to fluid. **ASTM C1107, Grade A, B & C** and **CRD C-621 Grade A, B & C** compliant.

Available in 50 lb. bags



## SC Multi-Purpose Grout

SC Multi-Purpose Grout is a non-shrink, non-metallic multi-purpose cement-based grout. SC Multi-Purpose Grout is formulated for a wide variety of grouting applications, from damp pack to flowable through a controlled, positive expansion. **ASTM C1107, Grade A, B & C** and **CRD C-621 Grade A, B & C** compliant.

Available in 50 lb. bags



## SC Precision Grout

SC Precision Grout is a non-shrink, non-metallic, high-flow, cement-based grout. SC Precision Grout is formulated for a wide variety of grouting applications, from plastic to fluid through a controlled, positive expansion. Designed to provide effective load bearing for high-flow precision grouting applications. **ASTM C1107, Grade A, B & C** and **CRD C-621 Grade A, B & C** compliant.

Available in 50 lb. bags



# Panama Canal

## SC Multi-Purpose Grout, SpecPoxy 3000

The \$5.25 Billion Panama Canal expansion project doubled the capacity of the canal, increasing both the number of ships and the size of ships that could pass through. Our non-shrink, non-metallic, DOT approved SC Multi-Purpose Grout and our ASTM 881 compliant, hi-mod, SpecPoxy 3000 were submitted and approved for this project. SpecPoxy 3000 was used to bond steel plates to concrete structures, while our SC Multi-Purpose Grout was used to grout lighting standards.



## PROJECT HIGHLIGHT



## SC Precision Grout HS

A non-shrink, non-metallic, cementitious grout that provides high early and ultimate compressive strength, over 16,000 psi, throughout a variety of applications. The unique formula, when mixed with water, creates a grout that is flowable and pumpable. Designed to provide effective load bearing for high-strength precision grouting applications such as compressors, heavy equipment foundations and tank bases. **ASTM C1107, Grade A, B & C** and **CRD C-621 Grade A, B & C** compliant.

Available in 50 lb. bags



## UW Grout

UW Grout is a pumpable, underwater cement-based non-shrink grout for use on underwater repairs such as pile restoration. UW Grout is designed for underwater use in tidal zones, in applications requiring a non-shrink, non-metallic, wash-out resistant grout in thicknesses from 1/2" up to several inches. UW Grout is specially formulated for minimal wash-out and is salt-water resistant. **CRD C-621** compliant.

Available in 50 lb. bags

## Industry Knowledge



### WHAT IS ASTM C1107?

This specification covers packaged dry, hydraulic cement grout (non-shrink) intended for use under applied load where a change in height below initial placement height is to be avoided. Grouts covered are composed of hydraulic cement, fine aggregate, and other ingredients. They require only the addition of mixing water for use.



# SUPER POR-ROK® & POR-ROK®

## LEADING THE INDUSTRY

Anchoring cements with almost unlimited field applications



- Ideal for patching floors & walls
- Patches cracks in concrete structures
- Great for caulking foundations/wall voids
- No rodding, chaining or vibrating

Specchem.com

**SPECHEM**  
Solution to Service

816.968.5600



### Por-Rok®

Por-Rok® Anchoring Cement is used in the anchoring of heavy machinery, railings, guard rails, banisters, repairing of cracks on damaged concrete substrate. It is a non-shrink, hydraulic, controlled expansion cement in a ready to use preparation. Water is added at the job site to provide a pourable, durable anchoring or patching compound. POR-ROK® Anchoring Cement has almost unlimited field applications.

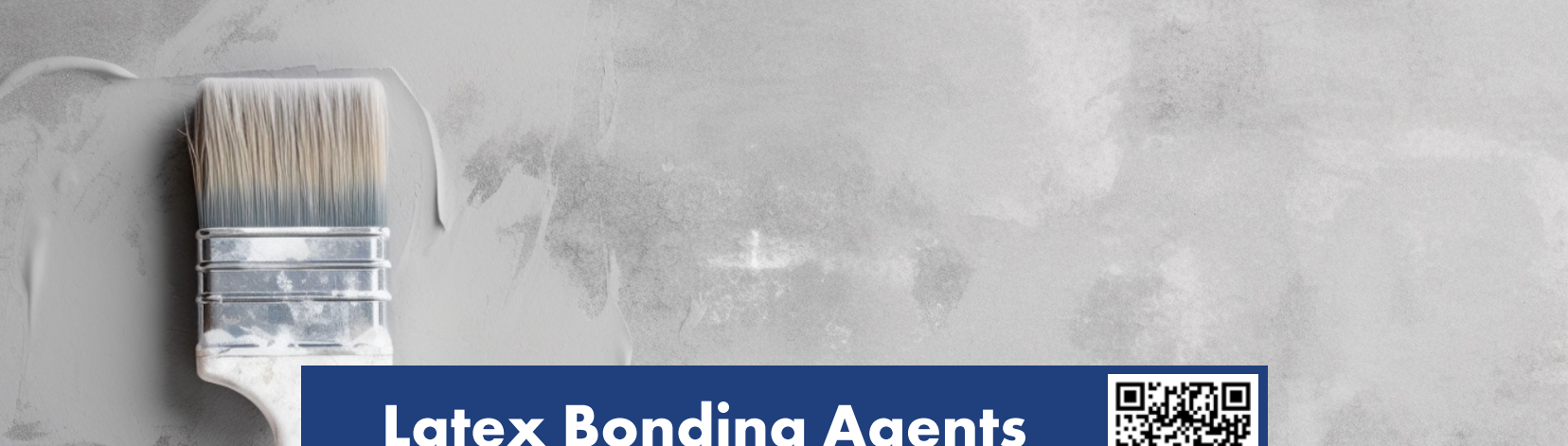
Available in 50 lb. bags and 5 lb. pails



### Super Por-Rok®

Super Por-Rok® Anchoring Cement is used in the anchoring of heavy machinery, railings, guard rails, banisters, and in the repair of cracks on damaged concrete substrate. It is a non-shrink, hydraulic, controlled expansion cement in a ready to use preparation. Water is added at the job site to provide a pourable, durable anchoring or patching compound. Super Por-Rok® Anchoring Cement has almost unlimited field applications.

Available in 50 lb. bags and 5 lb. pails



## Latex Bonding Agents

Providing superior adhesion and increased durability.



### PlasterBond

PlasterBond is a rewettable PVA latex bonding agent designed especially for interior/ exterior bonding of fresh plaster in patching, plastering and topping applications. Recommended for interior and/or exterior use not subjected to constant moisture, hydrostatic pressure or continuous water saturation.

Available in 1, 5, or 55 gal units



### SpecPrime

SpecPrime is a ready-to-use, rewettable, tinted primer which bonds new concrete and SpecChem underlayments to horizontal concrete or other sound surfaces. Recommended for interior and dry applications only. *Specifically designed as a primer for SpecFlow.*

Available in 1, 5, or 55 gal units



### SpecWeld

SpecWeld is a ready-to-use, rewettable polyvinyl acetate (PVA) emulsion admixture and bonding agent which bonds new concrete, underlayments, masonry, stucco, terrazzo, and Portland cement/sand mixes to horizontal and vertical concrete surfaces. Recommended for interior and/or exterior use not subjected to constant moisture, hydrostatic pressure or continuous water saturation. **ASTM C932 and ASTM C1059, Type 1** compliant.

Available in 1, 5, or 55 gal units



### StuccoBond

StuccoBond is a non-rewettable copolymer latex bonding agent designed especially for bonding of fresh concrete, stucco, mortar, or plaster in patching, plastering and topping applications.

Available in 1, 5, or 55 gal units



### Strong Bond

Strong Bond is an acrylic admixture and bonding agent designed to improve the adhesion and durability of concrete, masonry, stucco, terrazzo, and Portland cement/sand mixes to horizontal and vertical concrete and other surfaces. May contribute to **LEED credits. ASTM C1042, Type 2, and ASTM C1059, Type 2** compliant.

Available in 1, 5, or 55 gal units





# Liquid Hardeners

Products for densifying, hardening and protecting your concrete surfaces.



## Cure Hard

Cure Hard is a spray-applied concrete cure, hardener, and dustproof. Cure Hard deeply penetrates concrete surfaces to densify, seal, harden, and dustproof concrete and Portland cement-based material surfaces to help them achieve maximum abrasion resistance without altering the natural appearance of the concrete.

Available in 5 or 55 gal units



## LithSeal Lite

LithSeal Lite is an economical lithium silicate sealer/densifier for concrete surfaces. LithSeal Lite deeply penetrates and reacts with cured concrete. This reaction produces a calcium silicate hydrate within the concrete pores. Treated surfaces will remain breathable, reduce porosity, reduce dusting, reduce water permeability, and increase abrasion resistance. When properly applied, LithSeal Lite will not leave the whitish blush characteristic of other sodium silicate products.

Available in 5 or 55 gal units



## LithSeal SC

LithSeal SC is a premium lithium silicate sealer/densifier for concrete surfaces. LithSeal SC deeply penetrates and reacts with cured concrete. This reaction produces a calcium silicate hydrate within the concrete pores. Treated surfaces will remain breathable, reduce porosity, reduce dusting, reduce water permeability, and increase abrasion resistance. When properly applied, LithSeal SC will not leave the whitish blush characteristic of other sodium silicate products.

Available in 5 or 55 gal units

PLEASE VISIT OUR SITE FOR DETAILED INSTRUCTIONS TO DOWNLOAD THE APP  
<https://www.specchem.com/specchem-app/>



INSTALL  
THE NEW AND IMPROVED  
SPECHEM APP



## SpecGuard

SpecGuard is a multi-component, water-based polymeric protectant that improves the appearance and durability of concrete floors. SpecGuard incorporates a cross-linking nano-technology which aids penetration and adhesion, creating a tough, stain-resistant coating. SpecGuard also contains UV absorbers that enable it to protect colored or dyed concrete against UV degradation.

Available in 1, 5, or 55 gal units



## Spec-O-Lith

Spec-O-Lith is a water-based solution of fluorosilicate, formulated to harden and dustproof concrete floors and improve the wearing characteristics of new or aged concrete and terrazzo. It provides a chemically hardened surface with increased resistance to water, chemicals (acids, alkalis, etc.), grease, and oil absorption. Spec-O-Lith is especially effective in strengthening weak, soft, or dusting concrete surfaces.

Available in 5 or 55 gal units



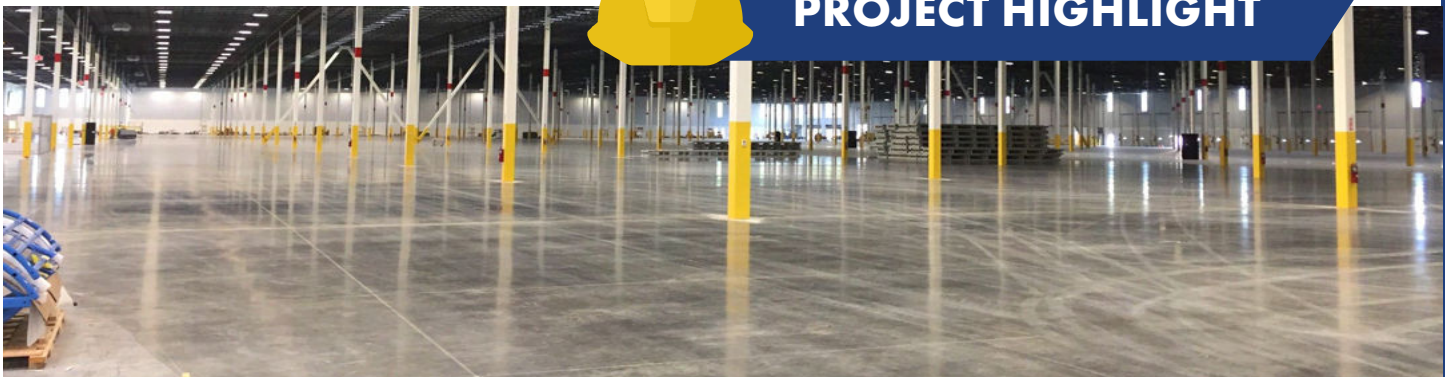
## SpecHard-Intraseal

SpecHard-Intraseal is a proprietary, colorless siliconate solution that increases the wear surface strength of concrete floors subjected to pedestrian and vehicle traffic. SpecHard-Intraseal penetrates concrete surfaces to seal, densify, and harden. SpecHard-Intraseal floors last longer, cost less to maintain, are safe to use, and are guaranteed to resist dusting for years after application.

Available in 5 or 55 gal units



## PROJECT HIGHLIGHT



## Amazon Warehouse Project: Perryville, MD

From our ASTM C309 compliant water-based Cure & Seal WB for the exterior paving to our reactive SpecTilt WB bond breaker... and everything in between. This 1.14 million square foot Perryville, MD Amazon warehouse project by PA contractor Conewago Enterprises featured the following lineup of concrete construction chemical products from SpecChem - LithSeal Lite, Cure & Seal WB, Orange Peel, SpecRez, and SpecTilt WB.



# SIMPLE STEPS TO THE PERFECT POLISH

## 1 Prime SpecPoxy 1000

A two-component, low-viscosity, moisture insensitive, high modulus, structural epoxy bonding adhesive and crack injection resin. SpecPoxy 1000 is 100% solids, solvent-free, low odor and high-strength.



## 2 Level SpecLevel PCT

A cement-based, self-leveling polishable concrete topping designed for interior and exterior use. SpecLevel PCT produces a dense hard surface that can be diamond polished in as little as 24 hours.



## 3 Densify Lithseal or SpecHard

A premium lithium-silicate sealer/densifier for concrete surfaces that deeply penetrates and reacts with cured concrete. Treated surfaces will remain breathable, reduce porosity, reduce dusting, reduce water permeability, and increase abrasion resistance.



## 4 Polish SpecGuard

SpecGuard is a multi-component, water-based polymeric protectant that improves the appearance and durability of concrete floors. SpecGuard incorporates a cross-linking nano-technology, which aids penetration and adhesion creating a tough, stain-resistant coating.



**\* FOR EXISTING CONCRETE:**  
**Clean & Strip using - Orange Peel**  
**Then follow above steps 3-4**



## Strip Orange Peel

An innovative solution for the toughest industrial applications. Effectively remove grease, grime and other contaminants from architectural concrete and other surfaces. VOC compliant with a pleasant citrus odor.



## Paving Curing Compounds

Curing Compounds for highways, airports, parking lots, and more.



### Pave Cure AMS

Pave Cure AMS is a high-solids white pigmented poly alpha-methylstyrene (AMS) concrete curing compound. When properly applied, Pave Cure AMS forms a continuous membrane that controls curing for strong and durable concrete. The white pigment reflects the sun's rays to help keep the concrete surface cooler and to prevent excessive heat buildup. Pave Cure AMS provides maximum retention for the most stringent concrete curing specifications. **ASTM C309, Type 2, Class A & B** and **ASTM C1315, Type 2** compliant. **DOT Approved.**

Available in 5, 55, or 275 gal units



### Pave Cure CW

Pave Cure CW is a high-solids water-based clear wax concrete curing compound. When properly applied, Pave Cure CW forms a continuous membrane that controls curing for strong and durable concrete. Pave Cure CW is available in both clear and clear with dye. **ASTM C309, Type 1 and 1-D, Class A** compliant.

Available in 5, 55, or 275 gal units



### Pave Cure Rez

Pave Cure Rez is a high-solids dissipating resin-based concrete curing compound. When properly applied, Pave Cure Rez forms a continuous membrane that controls curing for strong and durable concrete. Pave Cure Rez is ideal for application on exterior, horizontal surfaces such as highways, airports, street, and curb paving applications where proper curing and membrane dissipation is required. **ASTM C309, Type 1 and 1-D, Class A & B** compliant.

Available in 5 or 55 gal units





### Pave Cure Rez White

Pave Cure Rez White is a high-solids water-based, resin-based white pigmented concrete curing compound. When properly applied, Pave Cure Rez White forms a continuous membrane that controls curing for strong and durable concrete. The white pigment reflects the sun's rays to help keep the concrete surface cooler and to prevent excessive heat buildup. **ASTM C309, Type 2, Class A & B** compliant.

Available in 5 or 55 gal units



### Pave Cure WW

Pave Cure WW is a high-solids, wax and water-based white pigmented concrete curing compound. When properly applied, Pave Cure WW forms a continuous membrane that controls curing for strong and durable concrete. The white pigment reflects the sun's rays to help keep the concrete surface cooler and to prevent excessive heat buildup. Pave Cure WW is ideal for application on exterior horizontal surfaces such as highways, airports, street, and curb paving applications where proper curing is required. **ASTM C309, Type 2, Class A** compliant. **DOT Approved.**

Available in 5 or 55 gal units



### Pave Cure WW-300

Pave Cure WW-300 is a high-solids wax and water-based white pigmented concrete curing compound. Pave Cure WW-300 forms a continuous membrane that controls curing for strong and durable concrete. The white pigment reflects the sun's rays to help keep the concrete surface cooler and to prevent excessive heat buildup. **ASTM C309, Type 2, Class A**, and **CRD C300** compliant.

Available in 5 or 55 gal units



### SpecCity White

SpecCity White is a white pigmented concrete curing compound. When properly applied, SpecCity White forms a continuous membrane that controls curing for strong and durable concrete. The white pigment reflects the sun's rays to help keep the concrete surface cooler and to prevent excessive heat buildup. SpecCity White is ideal for application on exterior horizontal surfaces such as street and curb paving applications when proper curing is required. **ASTM C309, Type 2, Class A** compliant.

Available in 5 or 55 gal units



## PROJECT HIGHLIGHT



## JFK Airport

### Pave Cure Rez White, SpecStrip, SpecFilm

To ease traffic congestion and accommodate today's larger aircraft at one of the nation's busiest airports, the Port Authority of New York and New Jersey elected to reconstruct their largest runway, the 14,572 ft. 13R-31L, one of the longest commercial runways in the world. We were called on to provide an eco-friendly, VOC compliant curing solution that met the stringent specifications of NYDOT, ASTM, and the FAA. Nearly 90,000 gallons of Pave Cure Rez White was spray applied during the four months of construction.

Additionally, SpecFilm, an evaporation retardant, was used to protect the freshly placed concrete from accelerated surface water loss, and SpecStrip, a VOC compliant form release agent was utilized to provide clean, efficient form separation.

# CONNECT WITH US







# Repair Mortars

Formulated for repair, stabilization, and restoration of your concrete.



## Duo Patch

Duo Patch is a two-component, polymer-modified concrete repair mortar with integral corrosion inhibitor for use in horizontal, form and pour, and when mixed to a stiffer consistency, vertical and overhead applications. Duo Patch offers superior durability in industrial warehouse, parking deck, and roadway applications subject to heavy loads and abrasion.

Available in 50 lb. bags



## Final Finish™

Final Finish™ is a one-component, rapid-hardening, polymer-modified concrete resurfacing mortar for smoothing, resurfacing, rubbing, and restoring concrete surfaces. Sandless for ultra-fine repairs, Final Finish™ offers a unique long pot life, with rapid-hardening performance on the substrate to minimize waste and labor. Final Finish™ offers superior durability for all interior and exterior, horizontal, vertical, and overhead concrete applications.

Available in 40 lb. bags and pails, 15 lb. pails



## OverCrete

OverCrete is a one-component, polymer-modified concrete repair / resurfacing mortar for smoothing, resurfacing, and restoring concrete surfaces. OverCrete offers superior durability for all interior and exterior concrete applications.

Available in 40 lb. bags or pails



## RepCon® 928

RepCon® 928 is a single-component, polymer-modified, fiber-reinforced, rapid-setting concrete repair mortar with corrosion inhibitor for use on concrete floors, highway pavements, bridge decks, and other applications requiring early resumption of traffic or use. RepCon® 928 incorporates the latest in polymer technology offering superior durability, performance, and ease of application without liquid activators for horizontal and vertical form and pour applications. **ASTM C928** compliant.

Available in 50 lb. bags



## RepCon® 928 FS

RepCon® 928 FS is a very rapid-setting, polymer-modified, fiber-reinforced concrete repair mortar with corrosion inhibitor for use on concrete floors, highway pavements, bridge decks, and other applications requiring early resumption of traffic or use. RepCon® 928 FS incorporates the latest in polymer technology offering superior durability, performance, and ease of application without liquid activators for horizontal and vertical form and pour applications. **ASTM C928** compliant.

Available in 50 lb. bags



## RepCon® H

RepCon® H is a single-component, polymer-modified, fiber-reinforced concrete repair mortar with integral corrosion inhibitor for use in a variety of screed or trowel-down horizontal repair applications. RepCon® H incorporates the latest in polymer technology, offering superior durability, performance and ease of application in industrial, commercial, and infrastructure applications. **ASTM C928** compliant.

Available in 50 lb. bags



## RepCon® H-350

RepCon® H-350 is a single-component, polymer-modified, fiber-reinforced concrete repair mortar with integral corrosion inhibitor for use in a variety of screed, trowel-down or form and pour repair applications. RepCon® H-350 incorporates the latest in polymer technology offering superior durability, performance, and ease of application in industrial, commercial, and infrastructure applications. **ASTM C928** compliant.

Available in 50 lb. bags



## RepCon® UW Mortar

RepCon® UW Mortar is a single-component, polymer-modified, fiber-reinforced concrete repair mortar for use in underwater hand-applied concrete repair applications. RepCon® UW Mortar is designed **only** for underwater use in tidal zones in applications from 1/2" up to several inches. RepCon® UW Mortar is specially formulated for minimal wash-out in salt-water, and is chloride and sulfate-resistant.

Available in 50 lb. bags



## RepCon® V/O

RepCon® V/O is a single-component, polymer-modified, fiber-reinforced concrete repair mortar with integral corrosion inhibitor for use in a variety of vertical and overhead repair applications. RepCon® V/O incorporates the latest in polymer technology, offering superior durability, performance and ease of application in industrial, commercial, and infrastructure (DOT) applications.

Available in 50 lb. bags



# SIMPLE STEPS TO THE GENERAL SURFACE PREP

STEP

1

Locate area to be repaired. Hammer sounding or chain drag are generally used when locating delamination.

STEP

3

Prepare surface repair boundaries to prevent feather edged conditions. This is generally done by saw cutting the perimeter to recess the edge.

STEP

5

The moisture level of the existing concrete is critical to achieving a solid bond. An excessively dry substrate may absorb too much water from the repair material. Excessive moisture may clog the pores and prevent absorption of the repair material. SSD "saturated surface dry" or damp concrete is ideal prior to placing repair material.

STEP

2

Remove deteriorated concrete using acceptable methods. Surfaces of existing concrete expected to receive the repair material must be sound, clean, and free of bond inhibiting materials. An ideal sound surface is one of adequate compressive strength, free of any defects, with aggregate bonded to cement matrix.

STEP

4

Clean the surface of any exposed reinforcing steel and the existing concrete. Surface cleaning is critical to achieve an adequate bond between the repair and the existing concrete.



## SC Foundation Coating

SC Foundation Coating is a polymer-modified, cement-based waterproofing coating formulated to provide superior water-resistant concrete and masonry substrates. SC Foundation Coating is designed to waterproof the exterior surface of below grade concrete and masonry. SC Foundation Coating closes the internal voids in the substrate, but still allows full breathability.

Available in 50 lb. bags



## Sleek 1000 SLU

Sleek 1000 SLU is a cement-based, non-shrinking, self-leveling floor underlayment designed for interior use. This single-component product produces a smooth subfloor that can be feather edged and is compatible with adhesives for carpet and tile. Just mix Sleek 1000 SLU with water, pour or pump, and it will seek its own level to produce a smooth, flat hard surface.

Available in 50 lb. bags



## SpecFlow

SpecFlow is a cement-based, non-shrinking, self-leveling floor underlayment designed for interior use. This single-component product produces a smooth subfloor that will accept floor coverings in as little as 12-18 hours after installation. Just mix SpecFlow with water, pour or pump, and it will seek its own level to produce a smooth, flat, hard surface.

Available in 50 lb. bags



## SpecLevel PCT

SpecLevel PCT is a cement-based, self-leveling polishable concrete topping designed for exterior use. SpecLevel PCT produces a dense, hard surface that can be diamond polished in **as little as 24 hours**. Mix SpecLevel PCT with water, pour or pump, and it will seek its own level to produce a smooth, hard, wearable surface. SpecLevel PCT dries to a light concrete gray and will accept integral color or stains.

Available in 50 lb. bags



## SpecLevel PCT-AGG

SpecLevel PCT-AGG is a cement-based, self-leveling polishable concrete topping pre-extended with a special aggregate that when polished, creates an architectural natural polished concrete finish. SpecLevel PCT-AGG produces a dense hard surface that can be diamond polished in as little as 24 hours.

Available in 50 lb. bags





### SpecPatch Light

SpecPatch Light is a light gray colored, polymer-modified concrete repair mortar for concrete floors, walls, precast, tilt-up, and masonry surfaces. SpecPatch Light can be used for horizontal and vertical applications to provide a durable repair that can be shaped by shaving or sanding.

Available in 50 lb. bags



### SpecPatch 5

SpecPatch 5 is a general purpose, polymer-modified, **fast-setting** concrete repair mortar for concrete floors, walls, precast, tilt-up, and masonry surfaces. SpecPatch 5 can be used for horizontal and vertical applications to provide a durable repair that can be shaped by shaving or sanding.

Available in 50 lb. bags



### SpecPatch 15

SpecPatch 15 is a general purpose, polymer-modified concrete repair mortar for concrete floors, walls, precast, tilt-up, and masonry surfaces. SpecPatch 15 can be used for horizontal and vertical applications to provide a durable repair that can be shaped by shaving or sanding, and sets in approximately 15 minutes.

Available in 50 lb. bags



### SpecPatch 30

SpecPatch 30 is a general purpose, polymer-modified concrete repair mortar for concrete floors, walls, precast, tilt-up, and masonry surfaces. SpecPatch 30 can be used for horizontal and vertical applications to provide a durable repair that can be shaped by shaving or sanding.

Available in 50 lb. bags



### SpecPlug

SpecPlug is a durable, fast-setting hydraulic cement mortar that stops flowing water through holes and cracks in concrete and masonry surfaces. SpecPlug will not shrink or oxidize.

Available in 50 lb. bags or pails

## WHAT IS ASTM C928?

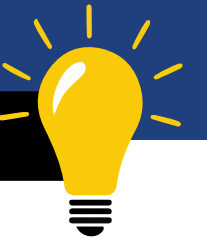
This specification covers packaged, dry, cementitious mortar or concrete materials for rapid repairs to hardened hydraulic-cement concrete pavements and structures.

Materials that contain organic compounds, such as bitumens, epoxy resins, and polyesters, as the principal binder are not included. Packaged, dry, concrete material contains aggregate of which at least 5% by mass of the total mixture is retained. Packaged, dry, mortar material contains aggregate of which less than 5% by mass of the total mixture is retained.

Aqueous solutions, aqueous emulsions or dispersions may be included as components of the packaged materials. Aggregates must be included as a component of the packaged materials. Both packaged dry concrete and mortar shall be mechanically mixed with the use of a mixing liquid.

Different test methods shall be performed in order to determine the following properties: compressive strength, length change, scaling resistance, and slant shear bond strength.

## Industry Knowledge



### Super SpecPlug

Super SpecPlug is a durable, super fast-setting hydraulic cement mortar that stops flowing water through holes and cracks in concrete and masonry surfaces. Super SpecPlug **sets in 90 seconds** and will not shrink or oxidize.

Available in 50 lb. bags or pails



### SpecPrep SB

SpecPrep SB is a three-component, long open time, cement/epoxy bonding adhesive and anti-corrosion rebar coating. SpecPrep SB offers up to a 24 hour open time and a structural bond for fresh concrete or repair mortars to existing concrete. SpecPrep SB also provides an anti-corrosion, protective coating for steel rebar in concrete restoration. SpecPrep SB will resist penetration of water and chlorides but will not form a vapor barrier after cure.

Available in 1 or 3.75 gal units



### SpecRock

SpecRock is a one-component, waterproof, non-shrinking, Portland cement-based anchoring cement that sets hard in 12-15 minutes. It expands as it sets and locks into the surrounding concrete.

Available in 50 lb. pails



Introducing SpecLevel PCT-AGG:  
A New Standard in Concrete Polishing



Mike LeMark,  
Executive VP/GM at SpecChem,  
Civil Engineering Alumnus,  
Concrete Industry Expert

In the world of concrete, innovation is a constant journey. At SpecChem, we embrace this journey and are excited to introduce our latest breakthrough product: SpecLevel PCT-AGG.

This high-quality, aggregate-filled cementitious topping is designed to create a stunning natural concrete appearance when polished. It's a revolution for contractors, architects, and engineers who prioritize durability, aesthetic appeal, and environmental sustainability.

Why Choose SpecLevel PCT-AGG?

**Superior Strength and Durability:** SpecLevel PCT-AGG is engineered for resilience. With high compressive strength, it ensures a long-lasting surface that can withstand heavy traffic and loads.

**Remarkable Versatility:** Suitable for a myriad of applications, from sophisticated commercial and retail environments to heavy-duty industrial spaces. Whether you're aiming for a sleek, modern polished look or a timeless terrazzo finish, SpecLevel PCT-AGG is the optimal choice.

**User-Friendly Installation:** We've designed SpecLevel PCT-AGG to be easy to install, conserving contractors' valuable time and effort. With its rapid set time, your project downtime is minimized, letting you get back to business swiftly.

**Environmentally Responsible:** SpecLevel PCT-AGG is not just about great performance; it's about sustainability. Our use of recycled aggregates reduces environmental impact, contributing to a greener future for the construction industry.

**Stunning Aesthetics:** SpecLevel PCT-AGG isn't just strong and durable; it's a feast for the eyes. By incorporating color and decorative aggregates creating a polished terrazzo-like finish, it adds a touch of elegance and sophistication to any space, impressing clients and visitors alike.

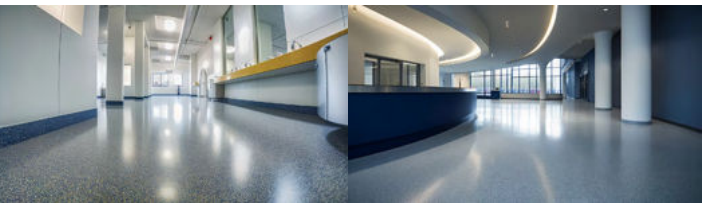
Stand Out with SpecLevel PCT-AGG

In comparison to competitors like CTS Rapid Set TRU Self-Leveling, SpecLevel PCT-AGG offers superior performance and value. It provides enhanced workability, a visually more appealing finish, and an overall better value proposition.

One of the critical differentiators of SpecLevel PCT-AGG is its remarkable Distinctness of Image (DOI). DOI is a measure of how clearly a surface reflects light, akin to a mirror-like quality. A high DOI reading signifies a high-quality finish with fewer surface imperfections. Our product recently demonstrated a DOI reading of 71 at Husqvarna's training center in Olathe, Kansas, indicating an exceptional level of finish quality.

SpecLevel PCT-AGG is more than a product; it's a testament to our commitment to excellence at SpecChem. It's about providing superior solutions that meet your needs while pushing the limits of what's possible in concrete chemistry.

If you're ready to experience the SpecChem difference with SpecLevel PCT-AGG, contact us today.



For more informative  
articles like this one, visit  
[specchem.com/resources](https://specchem.com/resources)



SPECLEVEL PCT-AGG

The premier choice for creating polished concrete surfaces. This pre-extended self-leveling polishable concrete topping produces a smooth, tough, and durable finish that is easy to use, quick to install, and self-leveling.

Formulated with a special aggregate that creates a natural concrete polished finish when polished. It's ideal for high-load rubber wheeled traffic, requiring a minimum thickness of 1/2", and can be applied in thicknesses from 3/8" to 1.5". It bonds strongly to the substrate and is normally walkable in 3 to 4 hours.



Available in 50 lb. bags





### SpecShot Plus

SpecShot Plus is a fiber-reinforced shotcrete mortar for use in a variety of vertical and overhead repair applications. SpecShot Plus incorporates the latest in fiber technology, offering superior durability, performance and ease of application in industrial, commercial, and infrastructure (DOT) applications. SpecShot Plus can be applied by dry shotcrete (gunite) method or by mixing with water in a wet mix method.

Available in 50, 80, or 3000 lb. bags



### SpecSmooth

SpecSmooth is a one-component, polymer-modified concrete repair and resurfacing mortar for smoothing, resurfacing, rubbing, and restoring concrete surfaces. SpecSmooth offers superior durability for all interior and exterior, vertical, overhead, and horizontal concrete applications. Ideal for repairs from a feather edge up to 1/4", SpecSmooth can also be used as a skim patch or trowel-down underlayment for horizontal repairs subject to light traffic.

Available in 50 lb. bags



### Total Patch

Total Patch is a very rapid-setting, multi-purpose, concrete repair mortar for use on concrete floors, highway pavements, and other applications requiring high early strength and early resumption of traffic or use.

Available in 50 lb. bags



### Aqua Plug

Por-Rok Aqua Plug's instant setting can be achieved in 2-3 minutes to stop pressure leaks in concrete and masonry surfaces. This rapid set allows Aqua Plug to bond mechanically and chemically to saturate surfaces.

Available in 50 lb. pails



### Pro Plug 45

Pro Plug 45 is a hydraulic cement formula designed to set at three (3) times the speed of ordinary quick set plug. Instant setting can be achieved in 45 seconds to stop pressure leaks in concrete and masonry surfaces. This rapid set allows Pro Plug 45 to bond mechanically and chemically to saturate surfaces.

Available in 50 lb. pails



## PROJECT HIGHLIGHT



## 18th Street Expressway, Kansas City

### SpecChem's RepCon® 928, SpecFilm RTU, and Pave Cure Rez.

SpecChem's RepCon® 928, SpecFilm RTU, and Pave Cure Rez products were used to repair and restore the 18th Street Expressway, a crucial freeway in Kansas City, Kansas. This project, undertaken by Comanche Concrete, involved tearing out large areas on the expressway and executing 4-inch patches.

RepCon® 928 was mixed with pea gravel in a bulk auger mixer to create a robust repair material. SpecFilm RTU was applied as an evaporation retarder to counteract rapid moisture loss due to windy conditions, ensuring a controlled curing process. The Pave Cure Rez was then used as a curing compound over RepCon® 928, following guidelines given by KDOT & SpecChem, reinforcing the quality of the repair work.

The 18th Street Expressway, which connects Interstate 35 to Interstate 70/U.S. Route 24/U.S. Route 40, is a vital transportation artery in Kansas City, and our products played a key role in restoring its structural integrity. This project underscores SpecChem's commitment to providing reliable, high-performance concrete repair solutions for infrastructure development and restoration projects across the nation.





Experience  
THE ULTIMATE  
Highest Quality Epoxies

Epoxy Product  
Selection Chart



Specialty Epoxies & Polyurea Products

Premium epoxies for commercial and industrial applications.



PRODUCT	ASTM C-881	Use Category	Features	Gel Time *	Recommended Use
<b>SPECPOXY 500</b> Bonding Crack injection	Grade 1 Types I, II, IV, V Class B, C	Bonding agent, injection resin	Ultra-Low Viscosity High Modulus	25 min. in mass 1 hr in thin film	A two component, very low viscosity, moisture insensitive, high modulus, structural epoxy for bonding concrete, steel and wood. Gravity feed or pressure injection crack repairs. Anchoring bolts, dowels and reinforcing bar.
<b>SPECPOXY 1000</b> Bonding Crack injection	Grade 1 Types I, II, IV, V Class B, C	Bonding agent, injection resin	Low Viscosity High Modulus	30 min. in mass 1 hr in thin film	Structural fine crack injection repair for: .007 - .020in/ .18 - .51 mm Binder for grout and mortar. Structural bonding of fresh to hardened & old to old concrete
<b>SPECPOXY 2000</b> Bonding & Corrosion Inhibiting	Grade 2 Types I, II, IV, V Class B, C	Bonding agent, injection resin	Medium Viscosity High Modulus	30 min. in mass 1 hr in thin film	Structural bonding of fresh to hardened & old to old concrete. Structural crack repair for .007 - .030in/18-76mm. Structural adhesive for concrete, metal, wood, etc
<b>SPECPOXY 3000</b> Anchoring Bonding	Grade 3 Types I, II, IV, V Class B, C	Non-sag, thixotropic nonabrasive, injectable, anchoring gel	High viscosity, non-sag, easy to mix	30 min. in mass 1 hr in thin film	Chemical anchoring, cap seal & port setting epoxy. Structural crack repair for .030-.060in/.76-1.5 mm. Blind injection where backside cap sealing is not practical, Structural grouting, anchoring, pinning overhead patching, mating irregular surfaces
<b>SPECPOXY 3000 FS</b> Anchoring Bonding	Grade 3 Types I, II*, IV, V* Class A, B, C	Non-sag, thixotropic nonabrasive, injectable, anchoring gel	Fast setting, high viscosity, non-sag gel, easy to mix	5-10 min in mass 1 hr thin film	Chemical anchoring, cap seal & port setting epoxy. Structural crack repair for .030-.060 in/ .76-1.5 mm. Blind injection where backside cap sealing is not practical, Structural grouting, anchoring, pinning overhead patching, bonding irregular surfaces
<b>SPECPOXY BINDER</b> Binder/Adhesive	Grade 1 Type III Class B, C	Low modulus moisture tolerant epoxy binder/ adhesive	Low modulus epoxy binder adhesive	45 Min. in mass	A skid resistant epoxy binder adhesive for overlays that can be easily blended with aggregates for mortar repairs.
<b>SPECPOXY CJ</b> Control Joint Filling	NA	Semi-rigid control joint filler	Semi-rigid shaves easily, fast, pourable	30 Min. in mass	Filling and sealing saw-cut control joints Not for expansion joints
<b>RAPID FLEX CJ</b> Control Joint Filling	NA	Semi-rigid control joint filler	Fast setting, UV stable, concrete gray color	30-40 seconds	Filling and sealing interior control joints Not for expansion joints. Interior crack repair.
<b>SPECPOXY GROUT</b> Machine Grouting	NA	Epoxy machine grout and general purpose grout	High strength, good oil and chemical resistance	3.5 hr in mass	Precision alignment of compressors and machinery. Grouting under sole plates. Crane rail grouting. Applications subjected to dynamic loads.
<b>SPECPOXY SEALER</b> Sealer	NA	Penetrating Epoxy Sealer	70% solids, two component, low viscosity sealer	Pot life 35 min.<4 hrs this film	Bridge decks/parking decks, auto/truck repair bays, concrete crack healer and dustproofor, concrete subjected to chemical mild attack, manufacturing plants, floor restoration
<b>SPECPOXY COATING</b> Coating	NA	High-build epoxy coating	100% solids two component, high performance floor coating system	Pot life 40-50 min. Foot traffic in 24 hours. Wheel traffic in 48 hours	Food processing plants, auto/truck repair bays, warehouse floors, chemical plants, manufacturing plants, floor restoration projects
<b>SPECPREP SB</b> Anti-Corrosion Bonding Agent	NA	Long open time, cement/epoxy bonding adhesive and rebar coating	Bonds fresh concrete, bonds steel to concrete, VOC compliant/ Solvent free	1 hour	Used for bonding fresh concrete to hardened concrete, bonding steel to fresh concrete, anti-corrosion coating for steel reinforcement, and is easy to apply by spray or brush.



Poly Fix®

Poly Fix® is a high-strength, two-component, ultra-low viscosity hybrid polyurethane concrete repair binder. Poly Fix® can be used to penetrate hairline cracks or, mixed with dry sand, to patch and repair concrete spalls or control joints. Poly Fix®'s water-like consistency also makes it an excellent crack healer/sealer for deteriorated concrete surfaces. **USDA accepted.**

Available in 22 oz. dual cartridges as well as 2 and 10 gal units



Rapid Flex 90

Rapid Flex 90 is a high durometer, 100% solids, two component, UV resistant, semi-rigid, rapid-curing, polyurea for filling control and construction joints in heavy duty industrial concrete floors. Rapid Flex 90 allows for joints to be shaved quickly for fast turnaround. Rapid Flex 90 is designed for use in compliance with ACI 302, section 4.10 recommendations for joint fillers used in saw cut/control joints with a Shore A Durometer of 90.

Available in 22 oz. dual cartridges as well as 10 gal units



Rapid Flex CJ

Rapid Flex CJ is a 100% solids, two-component, fast-setting UV-resistant, semi-rigid, rapid-curing, polyurea for filling control and construction joints in industrial concrete floors. Rapid Flex CJ allows for joints to be shaved quickly for fast turnaround. Rapid Flex CJ can also be used for the repair of damaged or spalled joint nosing and cracks. **ACI 302, section 4.10** compliant.

Available in 22 oz. dual cartridges as well as 10 gal units



Spec CJ Guard

A water-based blend of film-forming polymers that prevents staining of concrete due to overflow of epoxy or polyurea joint fillers. When applied to concrete adjacent to floor joints prior to filling, Spec CJ Guard dries to form a clear, glossy film that seals and protects the surface.

Available in Available in 1, 5, or 55 gal units





# Rapid Flex Colorant System



Standard  
Gray

Sage

Superior  
Bronze

Cobble  
Brown

Grizzly  
Gray



## Rapid Flex CJ & Rapid Flex 90 – Control Joint Fillers

Our Rapid Curing, Semi-rigid Polyurea Control Joint Filler is now available in different colors.

Rapid Flex Colorant System is a concentrated pigment pack designed to pigment SpecChem's two-component polyurea control joint fillers. The Rapid Flex Colorant System simply mixes into a neutral base, providing custom colors for filling control joints on architectural colored and polished concrete floors. Our control joint color system offers the convenience of multiple colors without the high cost of extensive inventory.

*\*Compatible with both Rapid Flex CJ & Rapid Flex 90 Polyurea Control Joint Fillers.*



### SpecPox 500

SpecPox 500 is a two-component, very low viscosity, moisture insensitive, high modulus, structural epoxy bonding adhesive and crack injection resin. SpecPox 500 is 100% solids, solvent free, low odor, and high-strength. **ASTM C881, Type I, II, IV, and V, Grade 1, Classes B & C** compliant.

Available in 15 oz. dual cartridges as well as 1, 3 or 15 gal units



### SpecPox 1000

SpecPox 1000 is a two-component, low viscosity, moisture insensitive, high modulus, structural epoxy bonding adhesive and crack injection resin. SpecPox 1000 is 100% solids, solvent free, low odor, and high-strength. **ASTM C881, Type I, II, IV, and V, Grade 1, Classes B & C** compliant.

Available in 15 oz. dual cartridges as well as 1, 3 or 15 gal units



### SpecPox 2000

SpecPox 2000 is a two-component, multi-purpose, high modulus, moisture tolerant epoxy bonding adhesive that meets the requirements of ASTM C881. SpecPox 2000 is a 100% solids, solvent free, medium viscosity bonder. **ASTM C881, Type I, II, IV, and V, Grade 2, Classes B & C** compliant.

Available in 22 oz. dual cartridges as well as 1, 2 or 10 gal units



### SpecPox 2000 LPL

SpecPox 2000 LPL is a two-component, long pot life, multi-purpose, high modulus, moisture tolerant epoxy bonding adhesive that meets the requirements of ASTM C881 and is an ideal product for bonded overlays. **ASTM C881, Type I, II, IV, and V, Grade 2, Classes B & C** compliant.

Available in 1, 3 or 15 gal units



### SpecPox 3000

SpecPox 3000 is a two-component, moisture insensitive, high modulus, structural epoxy bonding gel. SpecPox 3000 is 100% solids, solvent-free, low odor, high-strength, and non-sag. SpecPox 3000 is great for vertical and structural bonding and patching, sealing of cracks and the setting of injection ports, and anchoring bolts, dowels, and reinforcing steel. **ASTM C881, Type I, II, IV, and V, Grade 3, Class C** compliant.

Available in 22 oz. dual cartridges as well as 1, 2 or 10 gal units





### SpecPoxy 3000 FS

SpecPoxy 3000 FS is a fast-setting, two-component, moisture insensitive, high modulus, structural epoxy bonding gel. SpecPoxy 3000 FS is 100% solids, solvent free, low odor, high-strength, and non-sag. **ASTM C881, Type I, II, IV, and V, Grade 3, Classes B & C** compliant.

Available in 22 oz. dual cartridges as well as 1, 2 or 10 gal units



### SpecPoxy Binder

SpecPoxy Binder is a two-component, multi-purpose, low modulus, moisture tolerant epoxy binder adhesive that meets the requirements of **ASTM C881**. This solvent-free, low viscosity binder is shock absorbent and more flexible to sustain movement resulting from thermal changes. **ASTM C881, Type III, Grade 1, Classes B & C** compliant.

Available in 1, 2, or 10 gal units



## PROJECT HIGHLIGHT



## Port 95 Industrial Park: Baltimore, MD

### Rapid Flex CJ, SpecTilt WB, LithSeal Lite

Over a 1,000 gallons of Rapid Flex CJ – our UV-resistant, semi-rigid, rapid-curing, polyurea joint control filler – was used on the Port 95 Industrial Park project in Baltimore, MD. A feature project highlighting our ACI 302 compliant polyurea product, the contractor was impressed with the viscosity, and an easier flow through when pumping versus competitive products.

Additionally, the dark gray color of the product was preferable to the greenish tint that is often found with competitive products, along with it being easy to shave, and quickly for a fast turnaround. In addition to being a highlight project for our Rapid Flex CJ, this project also featured our flagship bond breaker, our SpecTilt WB and our LithSeal Lite densifier.

## WHAT IS ASTM C881?

This specification covers two-component, epoxy-resin bonding systems for application to Portland cement concrete, which are able to cure under humid conditions and bond to damp surfaces.

Type 1 - Non-load bearing, bonding hardened concrete to hardened concrete.

Type 2 - Non-load bearing, bonding fresh concrete to hardened concrete.

Type 3 - Bonding skid-resistant materials to traffic bearing surfaces.

Type 4 - Loading bearing, bonding hardened concrete to hardened concrete.

Type 5 - Loading bearing, bonding fresh concrete to hardened concrete.

Grade 1 - Low viscosity (water-motor oil)

Grade 2 - Medium viscosity (syrup-honey)

Grade 3 - Gel (peanut butter-caulk)

Class A - Application temperature <40°F

Class B - Application temperature 40-60°F

Class C - Application temperature >60°F

## Industry Knowledge



### SpecPoxy CJ

SpecPoxy CJ is a two-component, semi-rigid epoxy for filling control and construction joints in industrial concrete floors. This product supports the joint edges and reduces spalling of the edges caused by wheel traffic. SpecPoxy CJ is useful for contraction/construction joints that are cut or formed. SpecPoxy CJ may be used for the repair of damaged or spalled joint nosing and cracks. **ACI 302, section 4.10** compliant.

Available in 2 or 10 gal units



### SpecPoxy Coating

SpecPoxy Coating is a two-component, high-performance epoxy coating system designed to provide concrete and steel surfaces with excellent abrasion resistance in combination with protection against chemical attack. These outstanding properties are further enhanced by the availability of a selection of semi-gloss colors or clear for superior aesthetic benefits.

Available in 3 or 15 gal units

## SAFE AND EFFECTIVE



*SpecPoxy Binder and SpecPoxy Coating* are both environmentally friendly, VOC compliant products specially engineered to bind and blend as well as provide concrete and steel surfaces with excellent abrasion resistance in combination with protection against chemical attack – these outstanding properties are further enhanced by the availability of a selection of semi-gloss colors for superior aesthetic benefits. Both of our *SpecPoxy* products are ideal, green-conscious, and low VOC options when adhesive binder or coating are needed.





### SpecPoxy Grout

SpecPoxy Grout is a specially formulated three-component, 100% solids, high-strength, low exotherm epoxy grout. The system combines a high-strength epoxy resin and curing agent with a specially engineered blend of graded aggregates. The special aggregate blend provides excellent flow and uniform distribution throughout the high-strength epoxy matrix. Also available in high strength.

Available in .5 or 2 cubic foot units



### SpecPoxy Mortar

SpecPoxy Mortar is a three-component, 100% solids, multi-purpose, epoxy mortar. The system combines a high-quality epoxy binder with an engineered blend of graded aggregates. Specifically engineered to provide superior trowelability, compressive/tensile strength, impact, and chemical resistance for use in industrial and commercial applications such as warehouse floors, ramps, loading docks, and rebuilding joint nosings.

Available in .5 or 1 cubic foot units



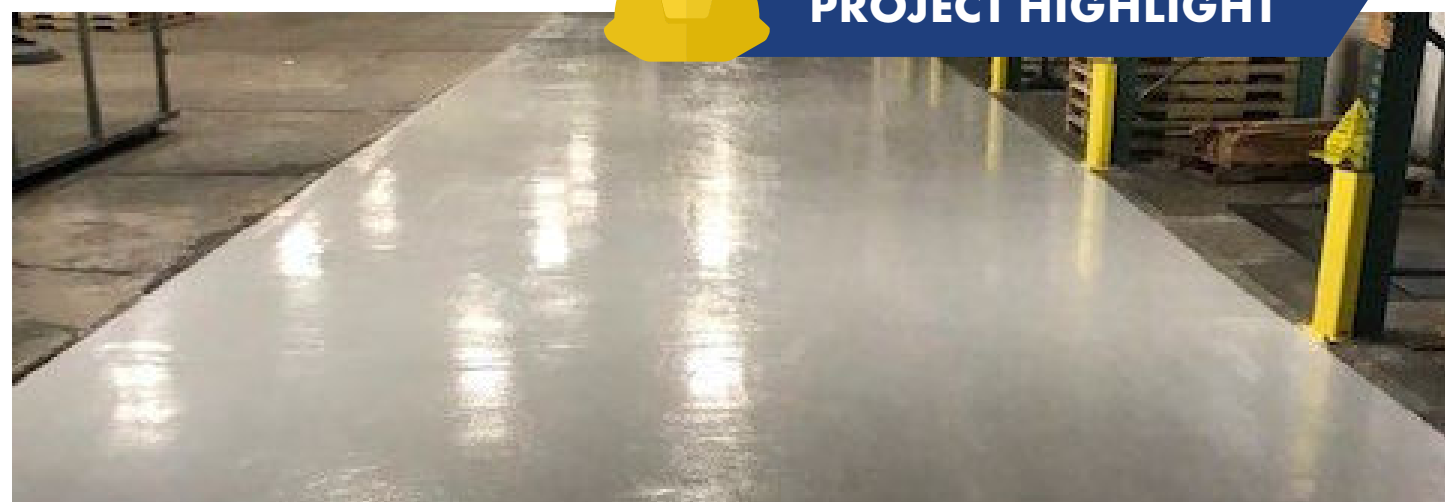
### SpecPoxy Sealer

SpecPoxy Sealer is a high-solids, two-component low viscosity penetrating epoxy sealer designed to protect new and existing concrete against de-icing salts and chemical attack. SpecPoxy Sealer penetrates into the concrete pores to form a sub-surface seal to resist the penetration of liquids contaminants, chloride ions, and chemical penetration. Its low viscosity also provides an excellent crack healer/sealer to many deteriorated concrete surfaces.

Available in 2, 10, or 110 gal units



## PROJECT HIGHLIGHT



## Yazoo Mills

### SpecPoxy Binder, SpecPoxy Mortar, Poly Fix, and Rapid Flex CJ

This Yazoo Mills loading rehab project was a success with the help of SpecChem's comprehensive offering for the repair and restoration of warehouse and industrial floors and floor joints. The products used in this project included SpecPoxy Binder, which was broadcast and used as a seal coat, SpecPoxy Mortar, Poly Fix, and Rapid Flex CJ for repairs. These products were expertly applied, resulting in a durable and long-lasting solution for the loading dock area.



# WHEN STRENGTH MATTERS

From a 5.5-acre retractable roof to 19 million+ pound retractable fields, SpecChem's *high strength* epoxy grout products are **strong, reliable, and built to bear** the kinds of loads that make them an easy - and *optimal* - choice for the **biggest, toughest** jobs in the industry.





# Surface Retarders

Designed to expose an aggregate finish from fresh concrete.



# Tilt-Up Bond Breakers

Industry-leading tilt-up bond breaker products.



## SpecEtch

SpecEtch is a spray-applied, chemical surface retarder specially engineered to expose the underlying aggregate of freshly placed horizontal concrete. SpecEtch comes ready-to-use, is non-flammable, and will not alter the color of the aggregate or concrete. SpecEtch has a typical etch of 3/8".

Available in 5 or 55 gal units



## SpecEtch Deep

SpecEtch Deep is a spray-applied, chemical surface retarder specially engineered to expose the underlying aggregate of freshly placed horizontal concrete. SpecEtch Deep comes ready-to-use, and is easy to apply. SpecEtch Deep is non-flammable, VOC compliant, and has a typical etch of 5/8".

Available in 5 or 55 gal units



## Versa Etch

Versa Etch is a state of the art, water-based concrete surface retarder that does not require plastic covering to protect the surface. Versa Etch is available in 7 standard depths of etch, from a very light acid wash up to 5/8" in depth for your decorative applications.

Available in 5 or 55 gal units

SAFE AND EFFECTIVE



Depending on the depth of your etch, SpecEtch and SpecEtch Deep are both environmentally friendly, VOC compliant products specially engineered to expose the underlying aggregate of freshly placed horizontal concrete. Both of our SpecEtch products are ideal, green-conscious, and low VOC options for exposing the true beauty that exposed aggregate brings to walkways, pool decks, patios, and more.

SpecChem tilt-up bond breakers are chemically reactive and specially engineered to provide a clean, easy lift of tilt-up panels. They contain no diesel, kerosene, waxes, or silicones.



## CleanLift 20/20

CleanLift 20/20 is a chemically reactive water-based tilt-up cure/bond breaker specially engineered to provide a clean, easy lift of tilt-up panels and meet the moisture retention of ASTM C309. CleanLift 20/20 contains no diesel, kerosene, waxes or silicones, and is formulated to be more identifiable on the casting bed.

Available in 5 or 55 gal units



## SpecTilt 100

SpecTilt 100 is a chemically reactive, solvent-based tilt-up bond breaker specially engineered to provide a clean, easy lift of tilt-up panels. SpecTilt 100 contains no diesel, kerosene, waxes, or silicones. SpecTilt 100 allows clean panels to lift easier, leaves no resin stains, is chemically reactive, and leaves no residue.

Available in 5 or 55 gal units





### SpecTilt EX

SpecTilt EX is a chemically reactive tilt-up bond breaker specially engineered to provide a clean, easy lift of tilt-up panels. SpecTilt EX is formulated with a unique solvent blend for fast-drying, solvent-based performance along with VOC compliance in the OTC/LADCO/MRPO regions.

Available in 5 or 55 gal units



### SpecTilt WB

SpecTilt WB is a chemically reactive, water-based tilt-up cure/bond breaker specially engineered to provide a clean, easy lift of tilt-up panels, and meet the moisture retention of ASTM C309. SpecTilt WB contains no diesel, kerosene, waxes, or silicones.

Available in 5 or 55 gal units



## PROJECT HIGHLIGHT



### Amazon Warehouse Project: Salem, OR

Another Amazon warehouse project, another million-plus square feet, this time in Salem, Oregon. This project featured our VOC compliant, solvent-based SpecTilt EX chemically reactive bond breaker, along with our best-selling E-Cure, a water-based concrete curing compound, and finally our SC Multi-Purpose Grout, one of our flagship cementitious powders.

# SIMPLE STEPS TO THE TILT-UP SYSTEM

## 1 Prevent SpecFilm

SpecFilm is designed to be used as an evaporation retardant and finishing aid on concrete flatwork of all types. When sprayed over fresh concrete, SpecFilm forms a thin, continuous film which prevents rapid moisture loss from the concrete surface.



## 2 Lift SpecTilt WB

SpecTilt WB is chemically reactive tilt-up cure and bond breaker specially engineered to provide a clean, easy lift of tilt-up panels.



## 3 Clean Orange Peel

Orange Peel concentrate is a cost effective, natural citrus solvent, cleaner and degreaser. Orange Peel is an innovative cleaning solution for the toughest industrial applications.



## 4 Seal SpecHard

SpecHard is a proprietary, colorless chemical solution that increases the wear surface strength of concrete floors subjected to pedestrian and vehicle traffic. SpecHard penetrates concrete surfaces to seal, densify and harden.



## 5 Fill Rapid Flex CJ or SpecPoxy CJ

Our control joint fillers are both engineered to offer strength and protection for your control and construction joints in industrial concrete floors. Both are two-component products, coming in a semi-rigid epoxy or a rapid-curing, fast-setting polyurea.







## Water Repellents

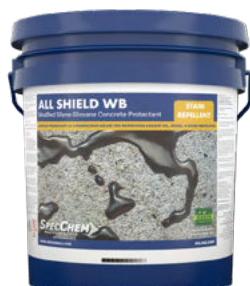
100% reactive penetrating water repellents.



### All Shield EX

All Shield EX is an exempt solvent, low VOC, synthetic modified, silane-siloxane concrete protectant. This clear, penetrating, breathable protectant is designed for use on interior/exterior, horizontal/vertical concrete, natural or synthetic stone surfaces to resist oil, water, food stains, and many other liquid contaminants.

Available in 1, 5 or 55 gal units



### All Shield WB

All Shield WB is a low VOC, waterborne, synthetic modified, silane-siloxane concrete protectant. This clear, penetrating, breathable protectant is designed for use on interior and exterior concrete, natural or synthetic stone surfaces to resist water, oil, food stains, and many other liquid contaminants. All Shield WB penetrates the surface and bonds directly with the substrate, which results in a surface that is highly-resistant to moisture, staining and de-icing salts. VOC compliant in the **OTC/LADCO/MRPO** regions.

Available in 1, 5 or 55 gal units



### SpecShield SB

SpecShield SB is a 100% reactive, solvent-based silane-siloxane sealer. This clear, penetrating, breathable water repellent is designed for use on interior and exterior above grade concrete or masonry surfaces. SpecShield SB penetrates the surface and bonds directly with the substrate, which results in a surface that is highly-resistant to both moisture and salt.

Available in 5 or 55 gal units



### SpecShield WB

SpecShield WB is a 100% reactive, waterborne silane-siloxane sealer. This clear, penetrating, breathable water repellent is designed for use on interior and exterior above grade concrete or masonry surfaces. SpecShield WB penetrates the surface and bonds directly with the substrate, which results in a surface that is highly-resistant to both moisture and salt.

Available in 5 or 55 gal units



### SpecSilane 20 WB

SpecSilane 20 WB is a 20% solids, 100% reactive, waterborne silane sealer. This clear, penetrating, breathable water repellent is designed for use on interior and exterior above grade concrete or masonry surfaces. SpecSilane 20 WB penetrates the surface and bonds directly with the substrate, which results in a surface that is highly-resistant to both moisture and salt.

Available in 5 or 55 gal units



### SpecSilane 40

SpecSilane 40 is a 40% solids, 100% reactive, silane sealer. This clear, penetrating, breathable water repellent is designed for use on interior and exterior above grade concrete or masonry surfaces. SpecSilane 40 penetrates the surface and bonds directly with the substrate, which results in a surface that is highly-resistant to both moisture and salt.

Available in 5 or 55 gal units



### SpecSilane 40 WB

SpecSilane 40 WB is a 40% solids, 100% reactive, waterborne silane sealer. This clear, penetrating, breathable water repellent is designed for use on interior and exterior above grade concrete or masonry surfaces. SpecSilane 40 WB penetrates the surface and bonds directly with the substrate, which results in a surface that is highly-resistant to both moisture and salt.

Available in 5 or 55 gal units



### SpecSilane 100

SpecSilane 100 is a 100% solids, 100% reactive, silane sealer. This clear, penetrating, breathable water repellent is designed for use on interior and exterior above grade concrete or masonry surfaces. SpecSilane 100 penetrates the surface and bonds directly with the substrate, which results in a surface that is highly-resistant to both moisture and salt.

Available in 5 or 55 gal units





## Waterproofing & Damp-proofing

Designed to patch, repair, protect, waterproofing, damp proofing and protecting asphalt surfaces.



# PATCH. REPAIR. PROTECT.



### Max-A-Patch ACP®

Max-A-Patch ACP is a high-quality, pre-mixed, all-weather, permanent asphalt cold patch. An optimal choice for all types of pavement repair jobs, such as dangerous potholes, wide cracks, or ruts, Max-A-Patch ACP is ready and open to traffic within minutes in any type of weather.

Available in 50 lb. bags



### Max-A-Seal Asphalt Paint

Max-A-Seal Asphalt Paint is a quick drying, high gloss, bituminous, corrosion resistant asphalt paint and offers one coat coverage with full resistance to water, acids, alkalis, electrolysis, and natural elements.

Available in 5, 55, 275 gal units



### Max-A-Seal DP®

Max-A-Seal DP is a non-fibred emulsion coating designed to meet **ASTM D1227, Type III** specification. This material is an asphalt emulsion with selected colloids to formulate a damp proofing coating that resists water penetration while allowing moisture vapor to escape.

Available in 5, 55, 275 gal units



### Max-A-Tack TTC®

Max-A-Tack TTC is an anionic trackless tack coat emulsion that is used primarily as a tack coat. This product can also be diluted 10% with water and used as a fog seal. Max-A-Tack TTC is manufactured to meet applicable state specifications.

Available in 5, 55, 275 gal & bulk units



### Max-A-Seal WP®

Max-A-Seal WP is an anionic emulsion that is latex modified. This material is an emulsion with colloids and polymers to formulate a waterproofing coating. Max-A-Seal WP can be used for exterior below grade or between slab application.

Available in 5, 55, 275 gal & bulk units



## ASPHALT PATCHING, WATERPROOFING & DAMP PROOFING

Our Max-A-Guard line of VOC compliant products is specially formulated to **patch, repair, and protect asphalt** surfaces, and features our premium, DOT approved, o VOC asphalt cold patch. Additionally, our asphalt emulsion coatings are designed specifically for **waterproofing, damp proofing and protecting surfaces** on exterior below grade and between-slab applications.

[www.specchem.com](http://www.specchem.com) | 816.968.5600



ENGINEERED TO  
**REPEL**

The Highest Quality Concrete Chemicals

**SPEC**CHEM  
Solution to Service



**The Industry Standard for toughness and protection of your concrete surfaces.**

SpecShield WB - uniquely engineered to provide a surface that is *impermeable* to moisture and salt. Clear, penetrating, breathable water repellent - *nothing* repels moisture and *protects* your concrete surfaces - fresh or existing - like SpecChem's SpecShield WB.

Protect your investment. Get the Ultimate.

[www.specchem.com](http://www.specchem.com) | 816.968.5600

# SPECMASTERS

INDUSTRY BEST-IN-CLASS TRAINING



## HANDS ON TRAINING

If you've ever been to one of our SpecMasters sessions, you already know that we provide exceptional value to the industry in the form of our best-in-class training programs. We host annual 2-3 day programs in our 7,600-sq. foot training facility, where distributors from all over the country and internationally come and enjoy interactive, hands-on product, application and industry information in an exciting and engaging environment.

We also host numerous ad-hoc product and application demos year-round for distributors, contractors, and trade associations in this facility, as well as product demos, job site visits, and lunch & learns all over the country, designed to educate distributors, contractors, and the specification community.

You think SpecChem training is a fit for you and your organization? Contact your SpecChem sales representative, or drop us a note online at [SpecChem.com](http://SpecChem.com) to see how we can help empower your organization.



Chemical Products Training



Cementitious Products Training



Speciality Products Training



## VIRTUAL TRAINING

Our comprehensive online SpecMasters program is meant to mirror our highly-regarded SpecMasters program held annually in Kansas City - not to replace it, but to create something more accessible to those with busier schedules.

Packed with the latest tools, resources, presentations, and video content to further your understanding of the technology, application, and how to sell our products. Offering multiple different courses - chemical products, cementitious products, specialty products, and sales product training - SpecMasters is the most extensive training for concrete construction building materials in the industry.

The ultimate goal is to empower you to add more value, sell more products, with more confidence, and get more familiar with SpecChem and our line of products.

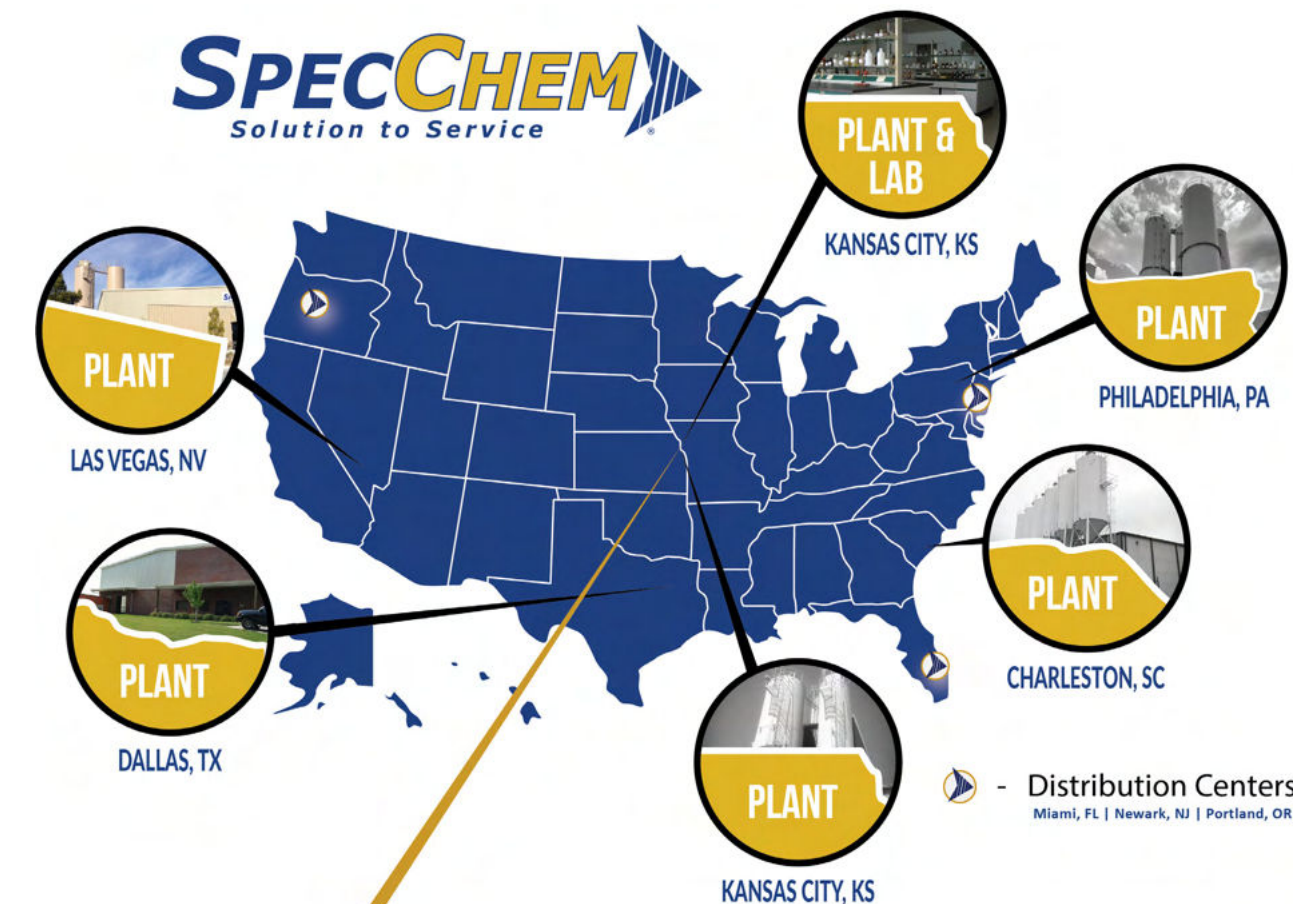


# NATIONWIDE DISTRIBUTION, SALES, AND SUPPORT

We maintain six state-of-the-art manufacturing plants strategically located to serve all major markets, ensuring cost-effective and on-time shipping to every major market in the continental United States.

With regional sales offices and a national sales force serving every major market in the country, we've built a nationwide distribution model that allows us to provide best-in-class products, top-rated customer service & support, and – by leveraging location-based raw materials advantages – competitive pricing.

Contact your SpecChem sales representative, or drop us a note online at [SpecChem.com](http://SpecChem.com) for distribution in your area.



## Baltimore

Kansas City, MO

Located in the heart of downtown Kansas City, the historical, six-story Lowe & Campbell building has been part of an \$18 million renovation and serves as the headquarters for SpecChem.



## Sunshine

Kansas City, KS

Nestled just minutes away from our Richmond plant in Kansas City, our recently acquired storage building is a strategic addition to our operations. This facility safeguards our inventory and mitigates potential supply chain disruptions, reinforcing our commitment to seamless product availability.



## Richmond

Kansas City, KS

Richmond, only minutes away from our Baltimore headquarters location, has the distinction of being our first plant, and of being capable of producing any of our liquid chemical products and epoxies. Richmond also houses our laboratory and our R&D team, along with our 7,600 square foot training facility.



## Chopper

Harleyville, SC

Chopper is a 70,000-square-foot comprehensive manufacturing plant/warehouse. Located in the heart of the Southeast, it caters to the eastern seaboard. The addition of four new tanks increases our liquid manufacturing capacity and allows us to provide our customers with faster lead times and more cost-effective freight rates.



## Bunker

Edwardsville, KS

Another Kansas City-based manufacturing plant, Bunker handles primarily cementitious products. Bunker's strategic location, just off of the Kansas River, offers us an unique competitive edge. Our immediate access to key raw materials - some of the best sand in the country for use in high-strength grouts, structural repair mortars, and other cementitious materials - gives us an incomparable advantage in terms of logistics.



## Star

Farmersville, TX

This state-of-the-art manufacturing plant, located just north of Dallas, is also strategically located to leverage logistical advantages. Proximity to raw materials suppliers, and general location – allowing for wide geographic coverage – give us yet another competitive advantage when it comes to keeping prices competitive and getting product to customers on time.



## Sinatra

Las Vegas, NV

Serving the Southwest, Sinatra is one of our manufacturing plants. Sinatra produces a wide variety of SpecChem products, including a full line of cementitious, epoxy, and liquid technologies. This plant is also strategically located in the Southwest to effectively serve the West Coast.



## Liberty

Bensalem, PA

Liberty, our newest plant not only adds a strategically located sixth manufacturing plant to SpecChem's footprint, but also adds a tremendous amount of experienced industry professionals to the SpecChem team. The Pennsylvania-based manufacturing plant is our largest producer of high-performance cementitious building products.



SpecChem Product Comparison

Product Category	SpecChem	Euclid/Tamms	BASF	SIKA	W.R. Meadows.	Dayton	Misc.	Misc.	Misc.
Cleaners & Strippers									
	Orange Peel	Euco Clean & Strip	Citrus Degreaser			J-48	(NX) BioClean, Citrus Clean	L&M Citrex	Vexcon MoistureBloc Floor Cleaner & Strip
	SpecBlast	Concrete Blaster					Prosoco 600	Vexcon Certi-Vex Concrete Remover	
Curing Compounds									
	SC Cure 500 & E-Cure								
	Cure & Seal 25	Diamond Clear, Rez Seal, Super RezSeal	MasterKure CC 250 SB		CS-309-25	J-20, J-22	L&M Dress & Seal 25, Crystal Clear Seal SB	ChemMasters Spray-Cure & Seal 25	TK-Kure & Seal 1315
	Cure & Seal 30		MasterKure CC 300 SB		CS-309-30, Decra-Seal	J-23, J-25	(NX) Cure & Seal 1315 A, Crystal Clear Seal 30 SB	L&M Dress & Seal 30	Certi-Vex Gloss Sealer FT
	Cure & Seal WB	Aqua-Cure VOX, Diamond Clear VOX	MasterKure CC 160 WB		VOCOMP-20	J-18, J-19	(GS) Multi-Purpose Sealer, Crystal Clear Seal WB	(NX) Cure & Seal 120 E, L&M Dress & Seal WB	Lambert Corp. Glazecote 20
	Cure & Seal WB 25	Super Aqua-Cure VOX, Super Diamond Clear VOX			VOCOMP-30	J-19, J-22 WB, Cure & Seal 1315 EF	(NX) Cure & Seal 250 E, Crystal Clear Seal 1315 WB	L&M Dress & Seal WB 25, Chemical Lumiseal WB Plus	V-Seal Industra-Gloss 350
	Cure & Seal 25 UV	Luster Seal 300, Super Diamond Clear	MasterKure CC 250 SB		CS-309-35, Tiah, Decra-Seal	J-22UV, J-25	L&M LumiSeal Plus, Crystal Clear Seal 1315 SB	ChemMasters Traz 25, UV Super Seal	Lambert Corp. Exposite SB
	Cure Shield EX						ChemMasters Silencure-A		
	Cure Shield WB						ChemMasters Silencure-SRT		
	SpecRez	Kurez DR VOX, Kurez 100			1100-Clear	J9 - A, Clear Cure VOC J-7WB	L & M Cure R, W-2, Vexcon Certi-Vex Envio RC 1000	Anti-Hydro Curing Compound #2 WP WB, Lambert Aqua Kure Clear	ChemMasters Safe-Cure 1000, Nox-Crete Res Cure DH 100
Decorative & Protective Sealers									
	Aqua Shine	Lusterseal 300 WB, Everclear VOX				Ultra Seal EF	(GS) "Wet Look II" Sealer	(NX) Sparkl-Seal E	(S) CureSeal - W
	Crystal Shine	Everclear 350			Expo-Gloss OTC		(GS) Wet Lacquer 2000		
	Crystal Shine Matte								
	Deco Shine	Ever Clear			Decra-seal	J-25	(GS) Original Wet Lacquer	(NX) Sparkl-Seal	(S) CureSeal - S
	Deco Shine Matte						(S) CureSeal - S Matte		
	Surface Shine	Luster Seal, Diamond Clear		Aggribrite VOC	Tiah	J-24	(NX) Nox-Carb	Exposite SB	
	Surface Shine EX	Luster Seal 350, Super Diamond Clear 350		Aggribrite VOC	Tiah	J-24	(NX) Nox-Carb		
Dry Shake Hardeners									
	SpecPlate	Eucoplate HD							
	SpecPlate NOX	Euco Diamond Plate							
	SpecPlate Topping	Super Euco Top							
	Quartz Floor Hardener	Surflex	MasterTop 100			Quartz Tuff	Quartzplate FF, Colohard™	US Spec Dense Top	Anti-Hydro S-Q Hardener
Evaporation Retardant									
	SpecFilm RTU				Evapre-RTU	AquaFilm, J-74 RTU			
	SpecFilm Concentrate	Eucobar	MasterKure ER 50 Sika Film	Sika Film	Evapre	J-74, AquaFilm Conc	L&M E-Con	TK-Tri-Film 2120	LambcoSkin
Form Release Agents & Form Treatment									
	Bio Strip WB	Form-EZE Natural				J-4 Bio, J-1EF, Farm Fresh XL		Crete-Lease BioTru	NoxCrete Bio-Nox
	Dry-Deck WB						NoxCrete PCE		
	EZ Clean & Release						NoxCrete Form Clean		
	Precast 80						Crete-Lease 880	NoxCrete RA-10, RA-10 250	
	SpecStrip	Form Shield Pure	Cast-Off		Duogard, Duogard Citrus, Duogard NE	J-1, J-1-A	Cresset 727, Cresset Super Strip 60, Kaufman FormKote OTC	L&M E-Z Strip, Debond, ChemMasters Release	NoxCrete Chembeton 250, Lambert Form Release 88 VOC
	SpecStrip Plus	FormShield G				J-2	Form Release Gold		
	SpecStrip Supreme	Crystal Release VOC			Duogard Plus	J-3	Crete-Lease 880 VOC	NoxCrete Form Coating 250, Plus	L&M DeBond Gold
	SpecStrip Ultra Blue						Western Blue Ribbon	NoxCrete Aluminox	
	SpecStrip WB	FormShield WB			Duogard II				Lamberts Corp. Form Release WB
	TriAct						NoxCrete Deactivator		



# SpecChem Product Comparison

Grouts & Anchoring Cement										
	Por-Rok					Ameristar QuikRok		Hartline Rocktite		
	SC Multi-Purpose Grout	NS Grout/NC Grout	MB Construction Grout, MasterFlow 713, MasterFlow 555	SikaGrout 212	SG-86, CG-86	#1107	CTS MP Grout, Vibropruf 11	L&M Duragrout, Vibropruf NS	Lambert Vibrapruf #11, Quikcrete Precision Grout, Five Star Grout	
	SC Precision Grout	Hi-Flow Grout	MasterFlow 928	SikaGrout 328	588	High Performance Grout, SureGrip High Performance Grout	Five Star Fluid 100 Grout	L&M Crystex	Vibropruf 20	
	SC Precision Grout HS		Masterflow 4316	SikaGrout 428FS			Five Star Strength Grout			
	SC Metallic Grout	NS Metallic Grout	Embeco 885	Dayton Metallic Grout			Anti-Hydro Axpandcrete	ChemMasters Met-OX Grout		
	UW Grout	Tremie Grout	SikaGrout UW					US Concrete Products HP Underwater Grout	Vexcon Certi-Vex Grout UW, Kaufman UW Grout	Five Star High Strength UW Grout
Latex Bonding Agent										
	Plaster Bond					Lanco CB-900		Lambert Acryl Bond		
	SpecPrep SB	Duralprep AC	Sika Amatec 110							
	SpecWeld	EucoWeld, Tammsweld	Eco Weld	Everweld	J-41	Larsen's Weld Crete	L&M Everweld, Hibond	TK-Tri-Bond, Kaufman Sure Weld		
	Strong Bond	Flex-con, Akkro-7t	MasterEmaco A660	Sika Latex Acrylic, Sika Latex R	Acryl-Loc	J-40	L&M Everbond, Mapei Planicrete AC	TK-Liquid Bonding Agent 225, Kaufman Sure Bond	US Concrete Products HP Bondit, Acrylbond	
	Stucco Bond		EucoWeld 2.0				Lambert 932 Link	Lanco CB-1000		
Liquid Hardener										
	Cure Hard	Eucosil	MasterKure HD 110 WB			Med-Cure	J-13	L&M Chem Hard, Lambert Guardseal	L&M Cure, Kaufman Silicure, Gardseal®	ChemMasters Chemisil, Nox-Crete Bro-Cure
	Spec-O-Lith	SurfHard	Lapidolith, HD 300WB				Lambert Corp. Solidus®		Vexcon StarSeal PS Clear	Solidus
	LithSeal SC						ConSolideck LS, NoxCrete Duronox HSC	L&M Lion Hard, Divergent Pentrasil NL	Mapei Mapecrete™ Hard LI	
	LithSeal Lite	Ultrasil LI+				Liqui-Hard Ultra	Pentra Hard-Densifier	ConSolideck LS CS	NoxCrete Duro-Nox LSC	
	SpecGuard	Ultra Guard				Pentra-Hard Guard		(NX) DuroPolish Plus	TK-LS Hard N Guard Lithium Silicate Blend	Prosoco LS Guard
	SpecHard	Euco Diamond Hard	MasterKure HD 210 WB			Liqui-Hard	J-17	Ashford Formula	(NX) DuroNox	L&M Seal Hard
Paving Curing Compounds										
	SC Cure 500 & E-Cure									
	Cure & Seal 25	Diamond Clear, Rez Seal, Super RezSeal	MasterKure CC 250 SB			CS-309-25	J-20, J-22	L&M Dress & Seal 25	ChemMasters Spray-Cure & Seal 25	TK-Kure & Seal 1315
	Cure & Seal 30	MasterKure CC 300 SB			CS-309-30, Decra-Seal	J-23, J-25	(NX) Cure & Seal 1315 A	L&M Dress & Seal 30	Certi-Vex Gloss Sealer FT	
	Cure & Seal WB	Aqua-Cure VOX, Diamond Clear VOX	MasterKure CC 160 WB			VOCOMP-20	J-18, J-19	(GS) Multi-Purpose Sealer	(NX) Cure & Seal 120 E	Lambert Corp. Glazecote 20, L&M Dress & Seal WB
	Cure & Seal WB 25	Super Aqua-Cure VOX, Super Diamond Clear VOX				VOCOMP-30	J-19, J-22 WB, Cure & Seal 1315 EF	(NX) Cure & Seal 250 E	L&M Dress & Seal WB 25, Chemical Lumiseal WB Plus	V-Seal Industra-Gloss 350
	Cure & Seal 25 UV	Luster Seal 300, Super Diamond Clear	MasterKure CC 250 SB			CS-309-35, Tiah, Decra-Seal	J-22UV, J-25	L&M LumiSeal Plus	ChemMasters Traz 25	Lambert Corp. Exoposit SB
	Cure Shield EX							ChemMasters Silencure-A		
	Cure Shield WB							ChemMasters Silencure-SRT		
	SpecRez	Kurez DR VOX, Kurez 100				1100-Clear	J9 - A, Clear Cure VOC J-7WB	L & M Cure R, W-2, Vexcon Certi-Vex Envio RC 1000	Anti-Hydro Curing Compound #2 WPWB, Nox-Crete Res Cure DH 100	ChemMasters Safe-Cure 1000, Lambert Aqua Kure Clear
Surface Retarders										
	SpecEtch	Concrete Surface Retarder S			Rugasol S	Top Stop	Top Cast	TK-Concrete Surface Retarder 6000	Vexcon StarSeal Envio Set	
	SpecEtch Deep									
Tilt-Up Bond Breakers										
	SpecTilt EX					J-6 LVOC		Silcoseal LVOC		
	SpecTilt WB					J-6 WB, Maxi-Tilt E		Silcoseal 2000F/Silcoseal Select		
	SpecTilt 100					J-6, Super Maxi Tilt		Silcoseal 100/Silcoseal Classic		
Water Repellents										
	All Shield WB									
	All Shield EX							Prosoco SLX-100		Ameripolish SR-2
	SpecShield WB	Weather-Guard, ChemStop WB, Baracade WB 244	White Roc 10 WB			J-26 WB	(GS) Natural Look	L&M AquaPel, Waterban® 90	Silocks Plus Silpro	
	SpecSilane 20WB					J-29A	TK-590-100		Pecora KlereSeal® 9100S	
	SpecSilane 40WB	Baracade Silane 40	Masterprotect H-400			Deck-O-Shield	J-29	L&M AquaPel Plus-Matches our SpecShield WB Extra	ChemMasters Aquanil Plus	Anti-Hydro Airdox 20
	SpecSilane 100	Baracade Silane 100C				Evonik Protectosil BHN		Protectosil Chemtrete BSM 400	Vexcon Certi-Vex Penseal 244 100	



# SpecChem Product Comparison

Repair Mortars											
	Duo Patch	Tammspatch II, DuraTop Flowable Mortar	Sonopatch 300	Sika Top 111 and 122 Plus		Meadow-Patch T2	Special Patch	Ardex CD, Sement Patch System	Vexcon Certi-Vex Patch	Lyons PatchCrete, Fast Patch 2	
	Final Finish	Tammscrete		Sika Smooth				Rapid Set Wunderfixx, Ardex TWP	NoxCrete Panel Patch	Pro Spec Feather Edge	
	OverCrete Coarse	Euco Recover						Mapei Mapecem Quikpatch	Ardex CD	Lambert Renew Coat Broom	
	OverCrete Fine	Thin Top Supreme							Ardex CD Fine	Lambert Renew Coat Trowel	
	RepCon 928	Versaspeed LS	Master Emaco 10-61	Sikaquick 1000		Futura 45		Rapid Set DOT Repair Mix, Five Star Structural Concrete	Cement All CTS Rapid Set	Vexcon Certi-Vex Rapid Patch	
	RepCon 928 FS	Versaspeed		Sikaquick 2500			Dayton HD-50	Five Star Hwy Patch			
	RepCon H	Concrete Top Supreme	MasterEmaco R310 CL, Emaco 566	Sika Set Mortar		Futura 15	Polyfast	EMACO 566	US Spec H2	Conproco Conpro Set, Quick Shot	
	RepCon UW Mortar	Speed Crete Blue Line	Master Emaco 10-60					Five Star Products Structural Concrete: Underwater HP	Vexcon Certi-Vex Patch UW		
	RepCon V/O	Verticoat Supreme, Verticoat, V-100	Master Emaco N425, Sonopatch 200	Sika Top 123 Plus, Sikaquick VOH			Permapatch V/O	Ardex B20, Mapei Plantiop X, XS	CTS Mortar Mix, Five Star Structural V/O	Rapid Set V/O Repair Mix, V80 Light Weight Overhead Patch	
	RevCrete	Thin-Top Supreme, Euco Recover		SikaLevel SkimCoat				Rapid Set Skim coat, Renew Coat	Ardex CD Fine and Coarse	Vexcon Certi-Vex All Patch	
	Sleek 1000 SLU							Bostik Level 1			
	SpecFlow	Flo-Top, Super Flo-Top		Sika Level 125				Ardex K15, LU 100, K10, V1200	Rapid Set LevelFlor, Laticrete Drytek Levelex, SilPro Silflo 220	Mapei Ultraplan Easy, Novoplan Easy, Self Leveling Plus	
	SpecLevel PCT							Rapid Set TRU Self Leveling		Ardex PC-T	
	SpecLevel PCT-AGG							Tru PC			
	SpecPatch 5	Speed Crete Red Line						Rapid Set Cement All	US Concrete Products US Thin Patch V/O 103	US Spec Quickset 20	
	SpecPatch 15	Speed Crete Red Line		Sika Repair 223, Sika Quick VOH				Ardex OVP, SKM, CP	Lyons Cast Patch, HB Fuller Blendcrete	L&M Duracrete, Spe D Patch	
	SpecPatch 30	Eucopatch, Thin Patch	MasterEmaco N 425, Sonopatch TC	Sika Repair 222		Meadow-Patch 20, T-1	Recrete, Thin Resurfacer	Lyons Pave Crete, Fast Patch	L&M Duracrete, HB Fuller Blendcrete	Ardex GPS, Ardex CP, Rapid Set Cement All	
	SpecPatch Light	Speed Crete Red Line				Meadow-Patch T1			HB Fuller Blendcrete	Kaufman Hi Cap	
	SpecPlug	Speed Plug	BASF Masterseal 590 (Waterplug)	Sikaset Plug		Meadow-Plug		L&M Duraplug	Lambert Lambco® Plug	Lyons Plug-Crete	
	SpecRock	Euco Rock	MasterFlow 110AN			Speed-E-Roc	Anchor All, Anchoring Cement	Super Por Rock, Ameristar Quik Rok	Quikrete Anchoring CementExterior Use	Lyons Flow-Rock, Anchor Sement	
	SpecSmooth	Tammscrete					Architectural Finish	US Spec 3-2-1, Tilt Coat	Ardex OVP™, TWP™	Finish Coat 70	
	Total Patch							SilPro TDQ		CTS Cement All	
	Specialty Epoxies & Polyurea Products										
		Poly Fix	Quikstitch						Metzger McGuire Rapid Refloor	Roadware 10 Minute Mender	Ardex Ardifix
		Rapid Flex 90							Metzger McGuire Edge Pro 90		
Rapid Flex C.J		Euco QWIKjoint UVR		Sika Loadflex 524 EZ				VersaFlex SL 85, 88 / Adhesives Technology Crackbond JF 311	Metzger/McGuire RS 88	Ardex Ardiseal Rapid Plus	
SpecPoxy 500		Dural 50	MasterEmaco P 160	Sikadur 51		Pro Poxy 40 LV LM					
SpecPoxy 1000		Dural #452 LV	MasterInject 1701	Sikadur Hi Mod 35		Rezi-Weld LV	J-56	Concressive 1375, Kaufman Surepoxy HMLV	(AT) Crackbond LR 321	TK-Epoxy Patch 211	
SpecPoxy 2000		Dural #452 MV	MasterEmaco ADH 330	Sikadur Hi Mod 32		Rezi-Weld 1000	J-58, Pro Poxy 204	Concressive LPL, Kaufman Surepoxy HM	(AT) Ultrabond 2100, Epiweld 580	TK-EPO 2000 Bonding Agent	
SpecPoxy 3000		Dural #452 Gel	MasterEmaco ADH 335	Sikadur Hi Mod 31		Rezi-weld Gel Paste	J-50, Pro-Poxy 300	Concressive 1444, Kaufman Surepoxy HM Gel	(AT) Ultrabond 2300	Quikrete DOT Anchoring Epoxy	
SpecPoxy 3000 FS		Dural Fast Set Gel	Rapid Gel	Sikadur Hi Mod 33		Rezi-Weld Gel Paste	J-51 FS, Pro-Poxy 300 Fast	(AT) Ultrabond 1300	TK-Epoxy Crack Filler 9000	DeNeef Denepox Rapid Gel	
SpecPoxy Binder		Flexolith	MasterSeal 350	Sikadur 22				TK-Epoxy Bridge Deck Overlay 2109	Poly-Carb, Inc. Mark-151.6, 154 Safe-T-Grid, 163		
SpecPoxy Coating		Duralkote 240	MasterTop 1213	Sikafloor 261, Sikagard 62			J-37	ChemMasters Duraguard 120	Tennant Eco-CEP	Vexcon PowerCoat Epoxy HD	
SpecPoxy C.J.		Euco 700	MasterSeal CR 335, 190	Sikadur 51 SL		Rezi-Weld Flex	J-52, Pro-Flex	Metzger McGuire MM-80	Tennant Eco-EJF System	Metzer-McGuire MM-80, MM80P	
SpecPoxy Grout		E-3F, E-3G, E-3HP, Polygrout	MasterFlow 648 CP	Sikadur 42		Rezi-Weld 3/2	J-55, Pro-Poxy 2000 NS, Five Star Epoxy Grout	L&M EpogROUT 758	Vexcon Certi-Vex Epoxy Grout 100	Kaufman K-Pro, , Five Star DP Epoxy Grout	
SpecPoxy Mortar		Duralflex Fastpatch		Sikadur 43, Patch-Pak			Sure Patch, Pro-Poxy 2500	Anti-Hydro Silica Epoxy Topping #140	Metzger/McGuire Armor-Hard	Lambert Corp. Epiweld® 9-N-7	
SpecPoxy Sealer		Dural 50 LM	MasterFlow GP, MasterEmaco P 160				Pro-Poxy 50-1	TK-Bridge Deck & Crack Sealer 2110	DeNeef Denepox I-40	Five Star Products Rapid Surface Repair R-60	



Cleaners, Strippers & Admixtures

Berry Clean	Raspberry scented solvent/cleaner/degreaser	P. 06, 07
C-Set	Calcium chloride accelerating admixture	P. 06
K-Set	Non-corrosive, non-chloride masonry accelerating admixture	P. 07
Orange Peel	Citrus-based solvent & degreaser	P. 06, 32, 33
Sealer ReNew	High-strength deblushing solvent/cleaner	P. 07
Solvent 100	High-strength solvent cleaner	P. 07
SpecBlast	Biodegradable cleaner to remove hardened concrete from forms, tools, etc.	P. 07, 25
Xylene	High-strength solvent cleaner for resin-based compounds	P. 07

Curing Compounds and Cure & Sealers

Crystal Rez	Clear, water-based dissipating resin cure	P. 08
Cure & Seal 25	25% solids solvent-based cure & seal	P. 08
Cure & Seal 25 EX	25% solids, low VOC, solvent-based cure & seal	P. 08
Cure & Seal 25 UV	25% solids solvent-based cure & seal	P. 09
Cure & Seal 25 UV EX	25% solids, low VOC, solvent-based cure & seal	P. 09
Cure & Seal 30	30% solids solvent-based cure & seal	P. 09
Cure & Seal 30 EX	30% solids, low VOC, solvent-based cure & seal	P. 10, 12
Cure & Seal WB	Water-based cure & seal	P. 10, 32
Cure & Seal WB 25	25% solids water-based cure & seal	P. 10
Cure & Seal WB 30	30% solids water-based cure & seal	P. 12, 19
Cure Shield	One step, silane solvent-based cure & seal	P. 10
Cure Shield EX	One step, low VOC Cure & Seal containing silane	P. 11
E-Cure	Clear concrete curing compound	P. 11, 20, 23, 57
SC Cure 500®	Lithium-based concrete curing compound	P. 11
SpecRez	Water-based dissipating resin cure	P. 12, 23, 32

Decorative & Protective Sealers

Aqua Shine	High-solids, water-based, methacrylate sealer	P. 14
Crystal Shine	High-gloss, methacrylate, lacquer sealer	P. 15
Crystal Shine Matte	Matte finish protective exterior sealer	P. 15
Deco Shine	Premium gloss, high durability exterior methacrylate sealer	P. 15
Deco Shine Matte	Matte finish protective exterior methacrylate sealer	P. 15
Surface Grip	Slip-resistant additive	P. 15
Surface Shine	High-gloss acrylic sealer (ASTM C1315 Class A)	P. 17
Surface Shine Brown	Single package, ready-to-use, brown pigmented sealing system	P. 17
Surface Shine Brown EX	25% solids low VOC solvent-based pigmented cure & seal (ASTM C309)	P. 17
Surface Shine Gray	Single package, ready-to-use, gray pigmented sealing system	P. 17

Surface Shine Gray EX	25% solids low VOC solvent-based pigmented cure & seal (ASTM C309)	P. 17
Surface Shine EX	High-gloss, low VOC acrylic sealer (ASTM C1315 Class A)	P. 18
Surface Shine WB	High-solids water-based acrylic sealer (ASTM C1315 Class A)	P. 18

Dry Shake Hardeners & Toppings

Quartz Floor Hardener	Non-metallic, quartz, dry shake floor hardener	P. 19
SpecPlate Floor Topping	Metallic floor topping	P. 19, 33
SpecPlate Hardener	Metallic dry-shake floor hardener	P. 19, 20
SpecPlate NOX	Non-Oxidizing metallic dry-shake floor hardener	P. 19, 20

Evaporation Retarders

IntraFilm	Evaporation retardant & finishing aid	P. 20, 21
IntraFilm Concentrate	Concentrated evaporation retardant & finishing aid	P. 21
SpecFilm Concentrate	Concentrated evaporation retardant & finishing aid	P. 20, 21
SpecFilm RTU	Evaporation retardant & finishing aid	P. 21, 35, 46, 58

Form Release Agents

Bio Strip WB	100% biodegradable water-based form release agent	P. 22, 23, 25
Bio Strip WB Concentrate	100% biodegradable water-based form release concentrate	P. 22
Deco Liquid Release	Root beer scented release agent for decorative stamps	P. 22
Dry-Deck WB	Water-based architectural form release agent (drying-type)	P. 24
EZ Clean & Release	Self cleaning highly-reactive petroleum mix	P. 24
Form Seasoning WB	Water-based aluminum form seasoning treatment	P. 24, 25
Precast 80	Fast-drying premium reactive form release	P. 24
SpecStrip	General purpose reactive form release agent	P. 24, 25, 35
SpecStrip Plus	Low odor premium reactive form release agent	P. 26
SpecStrip Supreme	Clear premium reactive form release agent	P. 26
SpecStrip VOC 100	Low VOC premium reactive form release agent	P. 26
SpecStrip WB	Water-based general purpose reactive form release agent	P. 26
TriAct	Multi-purpose form treatment concentrate	P. 25, 26

Grouts & Anchoring Cements

SC Metallic Grout	High-strength, non-shrink, metallic grout (meets ASTM C1107)	P. 27
SC Multi-Purpose Grout	Non-shrink, non-metallic construction grout (meets ASTM C1107)	P. 23,28,29,57
SC Precision Grout	High flow/high-strength, non-shrink, non-metallic grout (meets ASTM C1107)	P. 27
SC Precision Grout HS	High performance/high-strength grout	P. 28
UW Grout	Underwater cementitious grout	P. 28
Por-Rok	Premium gypsum based anchoring cement	P. 29
Super Por-Rok	Premium cement based anchoring cement	P. 29



Latex Bonding Agents

Plasterbond	Rewettable latex bonding agent	P. 30
SpecPrime	Re-emulsifiable underlayment primer for SpecFlow	P. 30
SpecWeld	Rewettable acrylic bonding agent	P. 30
Stuccobond	Non-rewettable latex bonding agent and admixtures	P. 30
Strong Bond	Acrylic bonding agent and admixture	P. 30

Liquid Hardeners

Cure Hard	Sodium silicate cure & dustproofers	P. 31
LithSeal Lite	Low-solids lithium silicate concrete sealer/densifier	P. 31, 32, 51
LithSeal SC	Lithium silicate concrete sealer/densifier	P. 31, 33
SpecGuard	High-gloss concrete protectant/polish	P. 32, 33
Spec-O-Lith	Water-based, liquid fluorosilicate hardener concentrate	P. 32
SpecHard-Intraseal	Siliconate sealer/densifier	P. 32, 33, 58

Paving Curing Compounds

Pave Cure AMS	High-solids white pigmented poly alpha-methylstyrene curing compound	P. 34
Pave Cure CW	Water-based, clear wax membrane curing compound (DOT)	P. 34
Pave Cure Rez	Water-emulsified, resin-based curing compound (DOT)	P. 34, 46
Pave Cure Rez White	White pigmented, water-emulsified resin-based curing compound (DOT)	P. 35
Pave Cure WW	Water-based, white pigmented wax membrane curing compound (DOT)	P. 36
Pave Cure WW - 300	High-solids, white pigmented, wax-based concrete curing compound	P. 36
SpecCity White	White pigmented, water-based wax curing compound (Non-DOT)	P. 36

Repair Mortars

Aqua Plug	Rapid Setting Cement Based Hydraulic Cement	P. 45
Duo Patch	Two-component, polymer-modified concrete repair mortar	P. 23, 37
Final Finish™	Ultra-fine, rapid-hardening/polymer-modified/concrete resurfacer	P. 37
Overcrete	Polymer-modified concrete repair/resurfacing mortar	P. 37
Pro Plug 45	Rapid Setting Cement Based Hydraulic Cement	P. 45
RepCon® 928 & FS	Rapid-hardening, single-component, fiber-reinforced, structural repair mortar	P. 37, 38, 46
RepCon® H	Single-component, fiber-reinforced, polymer-modified concrete repair mortar	P. 38
RepCon® H-350	Single-component, polymer-modified concrete repair mortar with corrosion inhibitor	P. 38
RepCon® UW Mortar	Fiber-reinforced underwater hand pack repair mortar	P. 38
RepCon® V/O	Single-component, fiber-reinforced, polymer-modified concrete repair mortar	P. 23, 38
SC Foundation Coating	Polymer-modified, cement-based waterproofing coating	P. 40
Sleek 1000 SLU	Premium self-leveling underlayment	P. 40

SpecFlow	Premium self-leveling cement-based underlayment	P. 40
SpecLevel PCT	High-performance self-leveling polishable concrete topping	P. 33, 40
SpecLevel PCT-AGG	High-performance self-leveling polishable concrete topping with Aggregate	P. 40, 43, 44
SpecPatch 15 & 30	General purpose concrete repair mortar	P. 41
SpecPatch 5	Fast-setting, general purpose concrete repair mortar	P. 41
SpecPatch Light	Light gray colored, fast-setting concrete repair mortar	P. 41
SpecPlug/Super SpecPlug	Fast-setting hydraulic cement designed to stop active water leaks	P. 41, 42
SpecPrep SB	Structural concrete bonding agent/anti-corrosion reinforcement coating	P. 42, 47
SpecRock	Non-shrink, fast-setting, pourable anchoring cement	P. 42
SpecShot Plus	Fiber-reinforced micro silica shotcrete	P. 45
SpecSmooth	Polymer-modified concrete repair/resurfacing mortar for thin applications	P. 45
Total Patch	Rapid-setting multi-purpose concrete repair mortar	P. 45

Specialty Epoxies & Polyurea Products

Poly Fix®	Ultra-low viscosity polymer concrete repair binder	P. 48, 53
Rapid Flex 90	Rapid-curing, Semi-rigid Polyurea control joint filler	P. 48, 49
Rapid Flex CJ	Rapid-curing, semi-rigid polyurea control joint filler	P. 48,51,53,58
Spec CJ Guard	Water-based blind of film-forming polymers	P. 48
SpecPoxy 500	ASTM C881 compliant hi-mod, ultra-low viscosity epoxy bonding adhesive	P. 47, 50
SpecPoxy 1000	ASTM C881 compliant hi-mod, low viscosity epoxy	P. 33, 47, 50
SpecPoxy 2000	ASTM C881 compliant hi-mod, medium viscosity epoxy	P. 47, 50
SpecPoxy 2000 LPL	ASTM C881 compliant hi-mod, LPL, medium viscosity epoxy	P. 50
SpecPoxy 3000	ASTM C881 compliant hi-mod, gel viscosity epoxy	P. 28,47,50,46
SpecPoxy 3000 FS	Fast-setting ASTM C881 compliant hi-mod, gel viscosity epoxy	P. 47, 51
SpecPoxy Binder	ASTM C881 compliant low-mod, epoxy binder/adhesive	P. 47, 51, 53
SpecPoxy CJ	100% solids, semi-rigid epoxy control joint filler	P. 47, 52, 58
SpecPoxy Coating	100% solids, high-build epoxy coating	P. 47, 52
SpecPoxy Grout/HS	High-strength epoxy grout	P. 47, 53
SpecPoxy Mortar	Three-component, 100% solids, multi-purpose, epoxy mortar	P. 53
SpecPoxy Sealer	70% solids penetrating epoxy sealer	P. 47, 53

Surface Retarders

SpecEtch	Horizontal surface retarder	P. 55
SpecEtch Deep	Horizontal deep surface retarder	P. 55
Versa Etch	Architectural Concrete Surface Retarder	P. 55



Tilt-Up Bond Breakers

CleanLift 20/20	Premium reactive water-based tilt-up cure/bond breaker	P. 56
SpecTilt 100	Premium reactive solvent-based tilt-up bond breaker	P. 56
SpecTilt EX	Quick-drying, low VOC solvent-based bond breaker	P. 57
SpecTilt WB	Premium reactive water-based bond breaker	P. 32, 51, 57, 58

Water Repellents

All Shield EX	Modified Oleophobic Penetrating Concrete Protectant	P. 59
All Shield WB	Modified silane-siloxane concrete protectant	P. 59
SpecShield SB	Silane-Siloxane solvent-based penetrating water repellent	P. 59
SpecShield WB	Silane-Siloxane water-based penetrating sealer	P. 60
SpecSilane 20 WB	20% solids, water-based deep penetrating sealer	P. 60
SpecSilane 40	40% solids VOC compliant penetrating silane sealer	P. 60
SpecSilane 40 WB	40% solids, water-based deep penetrating sealer	P. 60
SpecSilane 100	100% solids, deep penetrating silane sealer	P. 60

Waterproofing & Damp-Proofing

Max-A-Patch ACP	High-quality, pre-mixed, all-weather, permanent asphalt cold patch	P. 61, 62
Max-A-Seal DP	Non-fibered emulsion coating (meets ASTM D1127)	P. 61, 62
Max-A-Seal WP	Anionic emulsion, latex modified emulsion	P. 61, 62
Max-A-Seal Asphalt Paint	Quick drying, high gloss, bituminous, corrosion resistant asphalt paint	P. 61, 62
Max-A-Tack TTC	Anionic trackless tack coat emulsion, used primarily as a tack coat	P. 61, 62



Looking for more? Connect with Us.

1511 Baltimore Ave. Suite 600 Kansas City, MO 64108

816.968.5600 | Specchem.com



WELCOME TO THE  
*Gold*  
STANDARD

The Highest Quality Concrete Chemicals



We provide the most technologically innovative products  
in the concrete building materials market.

Nothing in the industry provides quality, performance and value like our full line of liquid chemical technologies, our wide range of epoxy products, and our comprehensive line of cementitious grouts, repair mortars, underlayments and overlayments, and asphalt patching and repair, waterproofing, and damp proofing products.



# CORE VALUES

## CUSTOMER

*"Customer for Life"*

BEST IN CLASS  
PROFITABILITY  
COMMITMENT  
LOYALTY



## COMPANY

*"Lead the Industry"*

LEADERSHIP  
QUALITY  
RESPECT  
TRUST



## TEAM

*"Develop Talent"*

ACCOUNTABILITY  
FUN/PASSION  
COMMITMENT  
COMMUNITY  
HONESTY



SpecGuide  
Version 6.0

**SPEC<sup>®</sup>CHEM**  
*Solution to Service*

1511 Baltimore Ave., Suite 600  
Kansas City, MO 64108  
P. 816-968-5600  
F. 816-561-4029  
[www.specchem.com](http://www.specchem.com)