

Spec Formliners

I N C O R P O R A T E D

Pattern Number: **1601**

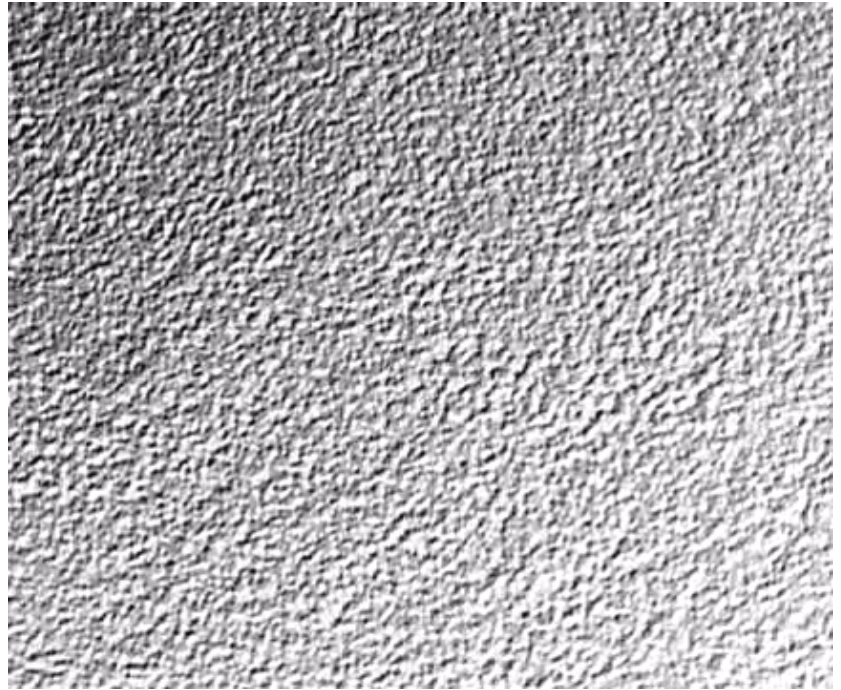
Light to Medium Sandblast

GENERAL INFORMATION

ATTACHMENT TO FORMWORK – Liners are attached to the form using TEK screws through the face of the liner spaced 12" C-C. Optional form mounting T-nuts embedded through the plywood backing is available for Elastospec panels.

FORM RELEASE – Apply with low flow, wide angle, flat spray nozzle and wipe with a cloth to insure a complete even coat to the entire form liner surface. Do not over apply form release agent. Protect treated form liners from precipitation, dust, and debris. Do not apply to reinforcing steel. **Dayton Superior Liner Coat? (J-4 LC)** form release is approved for all form liner materials.

TECHNICAL SUPPORT – Contact Spec Formliners, Inc. 888 429-9550



ThermoSpec™ Single Use HIGH IMPACT STYRENE

Property	ASTM	Rating
Tensile	D638	3,700
Izod Impact	D256	20
Vicat Softening	D1525	212
Material Weights - lbs/ft²		
0.070 MIL	0.090 MIL	0.150 MIL
0.393	0.506	0.843

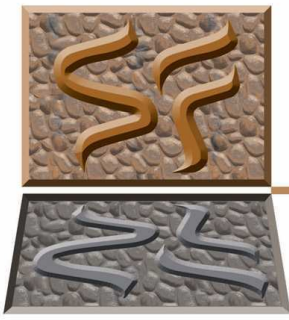
ThermoSpec™ Multi-Use ABS REUSABLE PLASTIC

Property	ASTM	Rating
Tensile	D638	5,300
Flexural	D790	9,300
Hardness	D786	105
Material Weights - lbs/ft²		
0.110 MIL	0.150 MIL	0.200 MIL
0.621	0.847	1.129

ElastoSpec™ 100% Solid Urethane BONDED TO 3/4" PLYWOOD

Property	ASTM	Rating
Shore A	D2240	50-55
Tensile	D638	800 psi
Elongation	D638	600%
Tear Strength	D624	200 pli
Material Weights - lbs/ft²		
Varies by Pattern		

ThermoSpec™ Standard Panel Sizes: 48" x 96" or 48" x 120" Custom Sizes and Art Panels available
ElastoSpec™ Customized Panel Sizes and Art Panels



Spec Formliners

I N C O R P O R A T E D

Pattern Number: **1602**
Heavy Sandblast

GENERAL INFORMATION

ATTACHMENT TO FORMWORK – Liners are attached to the form using TEK screws through the face of the liner spaced 12" C-C. Optional form mounting T-nuts embedded through the plywood backing is available for Elastospec panels.

FORM RELEASE – Apply with low flow, wide angle, flat spray nozzle and wipe with a cloth to insure a complete even coat to the entire form liner surface. Do not over apply form release agent. Protect treated form liners from precipitation, dust, and debris. Do not apply to reinforcing steel. **Dayton Superior Liner Coat? (J-4 LC)** form release is approved for all form liner materials.

TECHNICAL SUPPORT – Contact Spec Formliners, Inc. 888 429-9550



ThermoSpec™ Single Use HIGH IMPACT STYRENE

Property	ASTM	Rating
Tensile	D638	3,700
Izod Impact	D256	20
Vicat Softening	D1525	212
Material Weights - lbs/ft²		
0.070 MIL	0.090 MIL	0.150 MIL
0.393	0.506	0.843

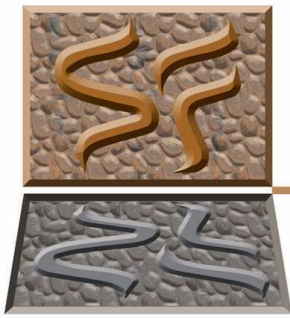
ThermoSpec™ Multi-Use ABS REUSABLE PLASTIC

Property	ASTM	Rating
Tensile	D638	5,300
Flexural	D790	9,300
Hardness	D786	105
Material Weights - lbs/ft²		
0.110 MIL	0.150 MIL	0.200 MIL
0.621	0.847	1.129

ElastoSpec™ 100% Solid Urethane BONDED TO 3/4" PLYWOOD

Property	ASTM	Rating
Shore A	D2240	50-55
Tensile	D638	800 psi
Elongation	D638	600%
Tear Strength	D624	200 pli
Material Weights - lbs/ft²		
Varies by Pattern		

ThermoSpec™ Standard Panel Sizes: 48" x 96" or 48" x 120" Custom Sizes and Art Panels available
ElastoSpec™ Customized Panel Sizes and Art Panels



Spec Formliners

I N C O R P O R A T E D

Pattern Number: **1605**

Broom/Rake Texture

GENERAL INFORMATION

ATTACHMENT TO FORMWORK – Liners are attached to the form using TEK screws through the face of the liner spaced 12" C-C. Optional form mounting T-nuts embedded through the plywood backing is available for Elastospec panels.

FORM RELEASE – Apply with low flow, wide angle, flat spray nozzle and wipe with a cloth to insure a complete even coat to the entire form liner surface. Do not over apply form release agent. Protect treated form liners from precipitation, dust, and debris. Do not apply to reinforcing steel. **Dayton Superior Liner Coat? (J-4 LC)** form release is approved for all form liner materials.

TECHNICAL SUPPORT – Contact Spec Formliners, Inc. 888 429-9550



5/32" maximum pattern depth.
Unbonded panel thickness - 3/8" +/- 1/16"

ThermoSpec™ Single Use HIGH IMPACT STYRENE

Property	ASTM	Rating
Tensile	D638	3,700
Izod Impact	D256	20
Vicat Softening	D1525	212
Material Weights - lbs/ft²		
0.070 MIL	0.090 MIL	0.150 MIL
0.393	0.506	0.843

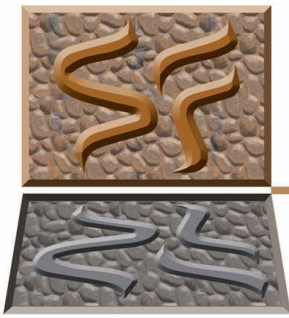
ThermoSpec™ Multi-Use ABS REUSABLE PLASTIC

Property	ASTM	Rating
Tensile	D638	5,300
Flexural	D790	9,300
Hardness	D786	105
Material Weights - lbs/ft²		
0.110 MIL	0.150 MIL	0.200 MIL
0.621	0.847	1.129

ElastoSpec™ 100% Solid Urethane BONDED TO 3/4" PLYWOOD

Property	ASTM	Rating
Shore A	D2240	50-55
Tensile	D638	800 psi
Elongation	D638	600%
Tear Strength	D624	200 pli
Material Weights - lbs/ft²		
Varies by Pattern		

ThermoSpec™ Standard Panel Sizes: 48" x 96" or 48" x 120" Custom Sizes and Art Panels available
ElastoSpec™ Customized Panel Sizes and Art Panels



Spec Formliners

I N C O R P O R A T E D

Pattern Number: **1606**

Random Large Aggregate

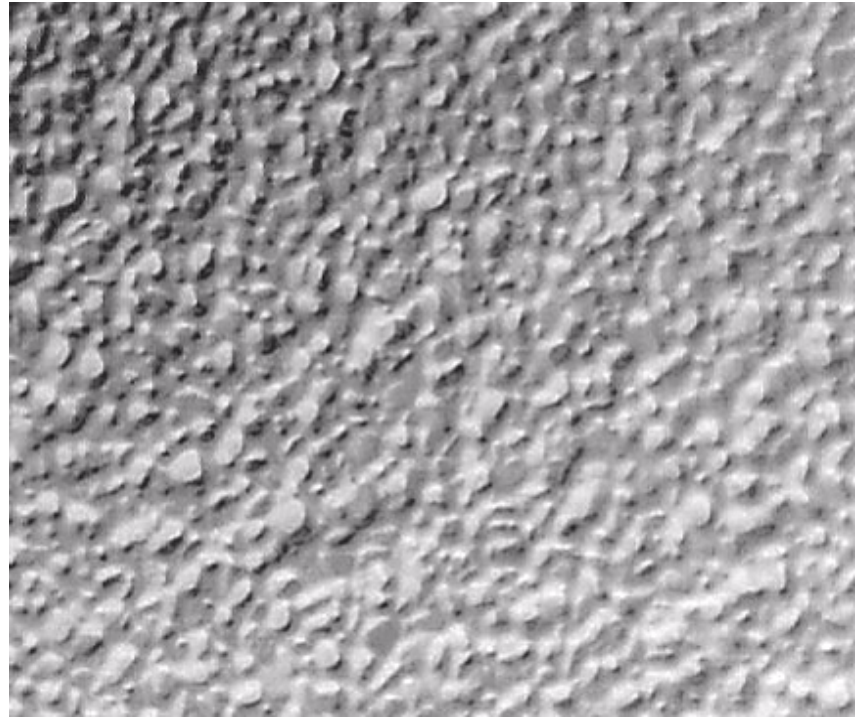
Random 3/4" large aggregate

GENERAL INFORMATION

ATTACHMENT TO FORMWORK – Liners are attached to the form using TEK screws through the face of the liner spaced 12" C-C. Optional form mounting T-nuts embedded through the plywood backing is available for Elastospec panels.

FORM RELEASE – Apply with low flow, wide angle, flat spray nozzle and wipe with a cloth to insure a complete even coat to the entire form liner surface. Do not over apply form release agent. Protect treated form liners from precipitation, dust, and debris. Do not apply to reinforcing steel. **Dayton Superior Liner Coat? (J-4 LC)** form release is approved for all form liner materials.

TECHNICAL SUPPORT – Contact Spec Formliners, Inc. 888 429-9550



ThermoSpec™ Single Use HIGH IMPACT STYRENE

Property	ASTM	Rating
Tensile	D638	3,700
Izod Impact	D256	20
Vicat Softening	D1525	212
Material Weights - lbs/ft²		
0.070 MIL	0.090 MIL	0.150 MIL
0.393	0.506	0.843

ThermoSpec™ Multi-Use ABS REUSABLE PLASTIC

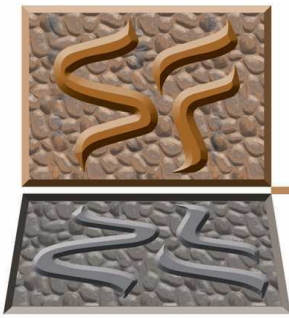
Property	ASTM	Rating
Tensile	D638	5,300
Flexural	D790	9,300
Hardness	D786	105
Material Weights - lbs/ft²		
0.110 MIL	0.150 MIL	0.200 MIL
0.621	0.847	1.129

ElastoSpec™ 100% Solid Urethane BONDED TO 3/4" PLYWOOD

Property	ASTM	Rating
Shore A	D2240	50-55
Tensile	D638	800 psi
Elongation	D638	600%
Tear Strength	D624	200 pli
Material Weights - lbs/ft²		
Varies by Pattern		

ThermoSpec™ Standard Panel Sizes: 48" x 96" or 48" x 120" Custom Sizes and Art Panels available

ElastoSpec™ Customized Panel Sizes and Art Panels



Spec Formliners

I N C O R P O R A T E D

Pattern Number: **1607**

Riverbed Aggregate

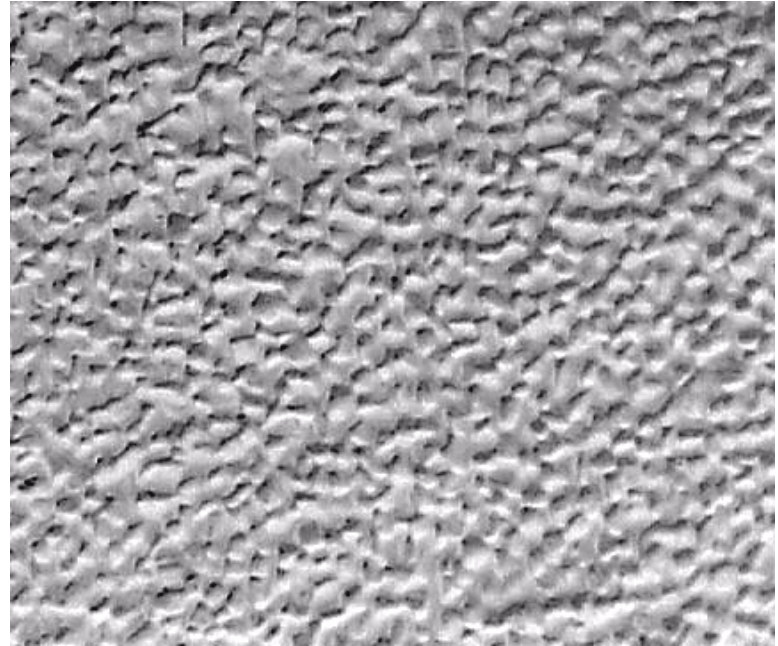
3/16" deep aggregate texture

GENERAL INFORMATION

ATTACHMENT TO FORMWORK – Liners are attached to the form using TEK screws through the face of the liner spaced 12" C-C. Optional form mounting T-nuts embedded through the plywood backing is available for Elastospec panels.

FORM RELEASE – Apply with low flow, wide angle, flat spray nozzle and wipe with a cloth to insure a complete even coat to the entire form liner surface. Do not over apply form release agent. Protect treated form liners from precipitation, dust, and debris. Do not apply to reinforcing steel. **Dayton Superior Liner Coat? (J-4 LC)** form release is approved for all form liner materials.

TECHNICAL SUPPORT – Contact Spec Formliners, Inc. 888 429-9550



ThermoSpec™ Single Use HIGH IMPACT STYRENE

Property	ASTM	Rating
Tensile	D638	3,700
Izod Impact	D256	20
Vicat Softening	D1525	212
Material Weights - lbs/ft²		
0.070 MIL	0.090 MIL	0.150 MIL
0.393	0.506	0.843

ThermoSpec™ Multi-Use ABS REUSABLE PLASTIC

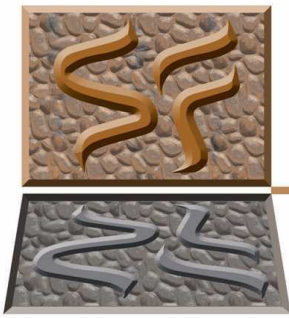
Property	ASTM	Rating
Tensile	D638	5,300
Flexural	D790	9,300
Hardness	D786	105
Material Weights - lbs/ft²		
0.110 MIL	0.150 MIL	0.200 MIL
0.621	0.847	1.129

ElastoSpec™ 100% Solid Urethane BONDED TO 3/4" PLYWOOD

Property	ASTM	Rating
Shore A	D2240	50-55
Tensile	D638	800 psi
Elongation	D638	600%
Tear Strength	D624	200 pli
Material Weights - lbs/ft²		
Varies by Pattern		

ThermoSpec™ Standard Panel Sizes: 48" x 96" or 48" x 120" Custom Sizes and Art Panels available

ElastoSpec™ Customized Panel Sizes and Art Panels



Spec Formliners

I N C O R P O R A T E D

Pattern Number: **1608**

Split Slate

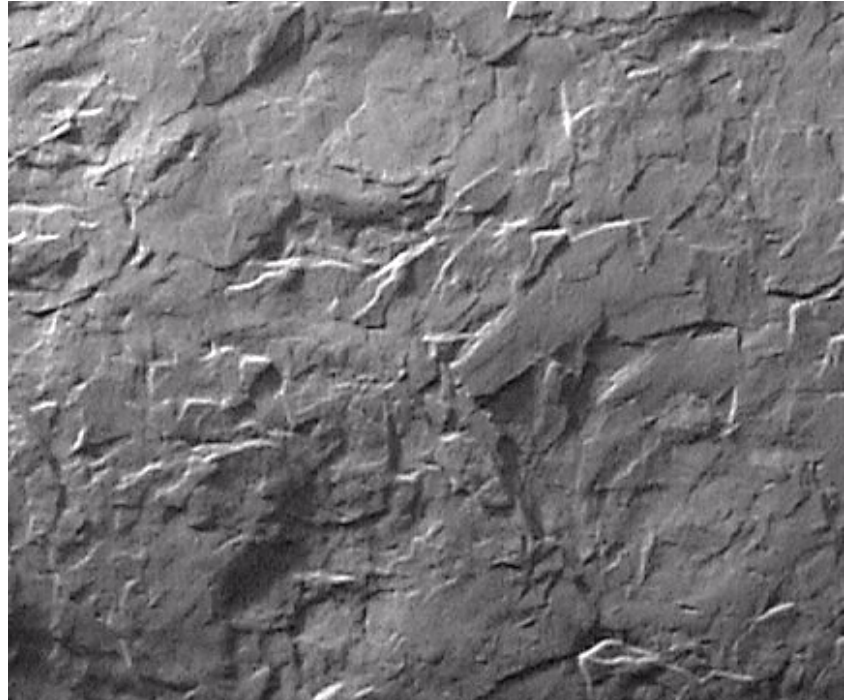
1/4" deep split slate

GENERAL INFORMATION

ATTACHMENT TO FORMWORK – Liners are attached to the form using TEK screws through the face of the liner spaced 12" C-C. Optional form mounting T-nuts embedded through the plywood backing is available for Elastospec panels.

FORM RELEASE – Apply with low flow, wide angle, flat spray nozzle and wipe with a cloth to insure a complete even coat to the entire form liner surface. Do not over apply form release agent. Protect treated form liners from precipitation, dust, and debris. Do not apply to reinforcing steel. **Dayton Superior Liner Coat? (J-4 LC)** form release is approved for all form liner materials.

TECHNICAL SUPPORT – Contact Spec Formliners, Inc. 888 429-9550



ThermoSpec™ Single Use HIGH IMPACT STYRENE

Property	ASTM	Rating
Tensile	D638	3,700
Izod Impact	D256	20
Vicat Softening	D1525	212
Material Weights - lbs/ft²		
0.070 MIL	0.090 MIL	0.150 MIL
0.393	0.506	0.843

ThermoSpec™ Multi-Use ABS REUSABLE PLASTIC

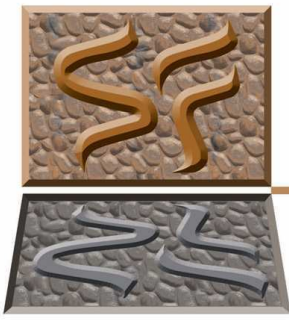
Property	ASTM	Rating
Tensile	D638	5,300
Flexural	D790	9,300
Hardness	D786	105
Material Weights - lbs/ft²		
0.110 MIL	0.150 MIL	0.200 MIL
0.621	0.847	1.129

ElastoSpec™ 100% Solid Urethane BONDED TO 3/4" PLYWOOD

Property	ASTM	Rating
Shore A	D2240	50-55
Tensile	D638	800 psi
Elongation	D638	600%
Tear Strength	D624	200 pli
Material Weights - lbs/ft²		
Varies by Pattern		

ThermoSpec™ Standard Panel Sizes: 48" x 96" or 48" x 120" Custom Sizes and Art Panels available

ElastoSpec™ Customized Panel Sizes and Art Panels



Spec Formliners

I N C O R P O R A T E D

Pattern Number: **1609**

1" Round Stone

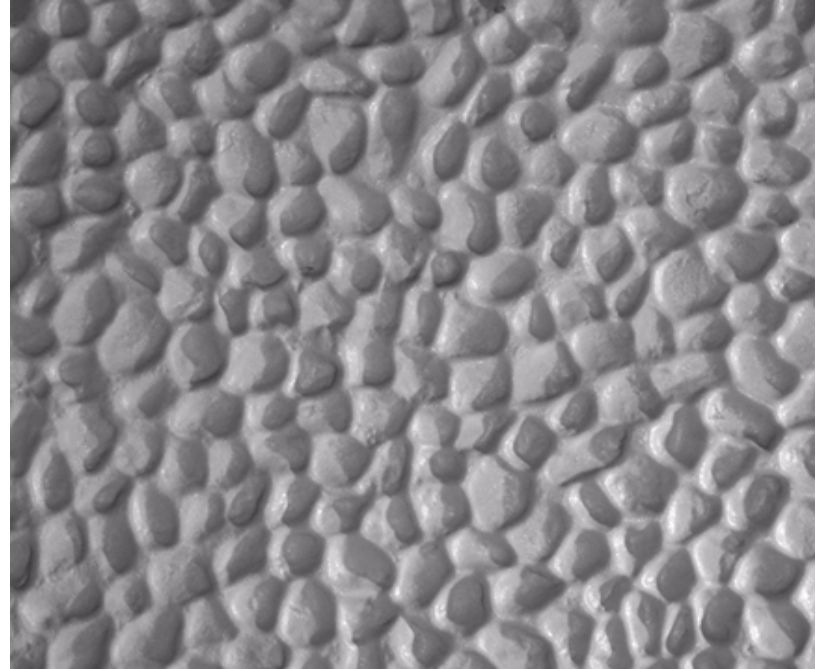
Round stone texture

GENERAL INFORMATION

ATTACHMENT TO FORMWORK – Liners are attached to the form using TEK screws through the face of the liner spaced 12" C-C. Optional form mounting T-nuts embedded through the plywood backing is available for Elastospec panels.

FORM RELEASE – Apply with low flow, wide angle, flat spray nozzle and wipe with a cloth to insure a complete even coat to the entire form liner surface. Do not over apply form release agent. Protect treated form liners from precipitation, dust, and debris. Do not apply to reinforcing steel. **Dayton Superior Liner Coat? (J-4 LC)** form release is approved for all form liner materials.

TECHNICAL SUPPORT – Contact Spec Formliners, Inc. 888 429-9550



ThermoSpec™ Single Use HIGH IMPACT STYRENE

Property	ASTM	Rating
Tensile	D638	3,700
Izod Impact	D256	20
Vicat Softening	D1525	212
Material Weights - lbs/ft²		
0.070 MIL	0.090 MIL	0.150 MIL
0.393	0.506	0.843

ThermoSpec™ Multi-Use ABS REUSABLE PLASTIC

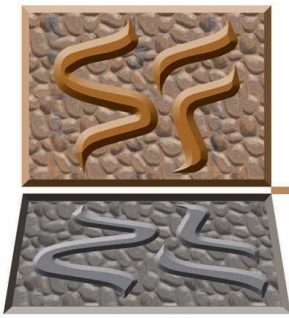
Property	ASTM	Rating
Tensile	D638	5,300
Flexural	D790	9,300
Hardness	D786	105
Material Weights - lbs/ft²		
0.110 MIL	0.150 MIL	0.200 MIL
0.621	0.847	1.129

ElastoSpec™ 100% Solid Urethane BONDED TO 3/4" PLYWOOD

Property	ASTM	Rating
Shore A	D2240	50-55
Tensile	D638	800 psi
Elongation	D638	600%
Tear Strength	D624	200 pli
Material Weights - lbs/ft²		
Varies by Pattern		

ThermoSpec™ Standard Panel Sizes: 48" x 96" or 48" x 120" Custom Sizes and Art Panels available

ElastoSpec™ Customized Panel Sizes and Art Panels



Spec Formliners

I N C O R P O R A T E D

Pattern Number: **1613**

Fractured Concrete

3/4" maximum relief

GENERAL INFORMATION

ATTACHMENT TO FORMWORK – Liners are attached to the form using TEK screws through the face of the liner spaced 12" C-C. Optional form mounting T-nuts embedded through the plywood backing is available for Elastospec panels.

FORM RELEASE – Apply with low flow, wide angle, flat spray nozzle and wipe with a cloth to insure a complete even coat to the entire form liner surface. Do not over apply form release agent. Protect treated form liners from precipitation, dust, and debris. Do not apply to reinforcing steel. **Dayton Superior Liner Coat? (J-4 LC)** form release is approved for all form liner materials.

TECHNICAL SUPPORT – Contact Spec Formliners, Inc. 888 429-9550



ThermoSpec™ Single Use HIGH IMPACT STYRENE

Property	ASTM	Rating
Tensile	D638	3,700
Izod Impact	D256	20
Vicat Softening	D1525	212
Material Weights - lbs/ft²		
0.070 MIL	0.090 MIL	0.150 MIL
0.393	0.506	0.843

ThermoSpec™ Multi-Use ABS REUSABLE PLASTIC

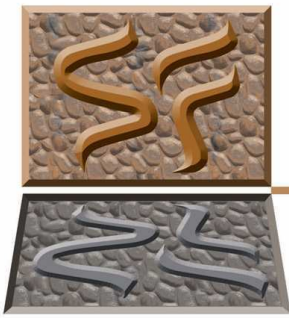
Property	ASTM	Rating
Tensile	D638	5,300
Flexural	D790	9,300
Hardness	D786	105
Material Weights - lbs/ft²		
0.110 MIL	0.150 MIL	0.200 MIL
0.621	0.847	1.129

ElastoSpec™ 100% Solid Urethane BONDED TO 3/4" PLYWOOD

Property	ASTM	Rating
Shore A	D2240	50-55
Tensile	D638	800 psi
Elongation	D638	600%
Tear Strength	D624	200 pli
Material Weights - lbs/ft²		
Varies by Pattern		

ThermoSpec™ Standard Panel Sizes: 48" x 96" or 48" x 120" Custom Sizes and Art Panels available

ElastoSpec™ Customized Panel Sizes and Art Panels



Spec Formliners

I N C O R P O R A T E D

Pattern Number: **1614**

Smooth Sheet

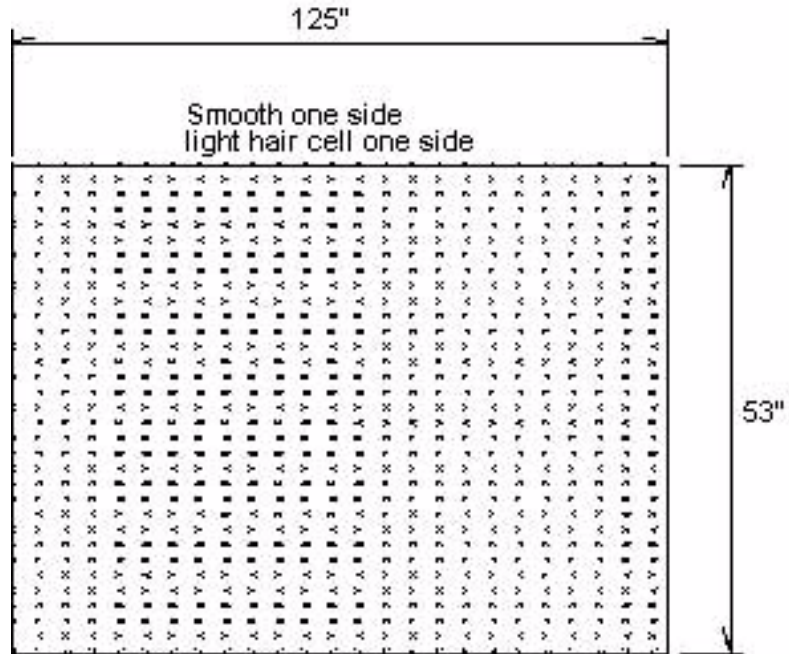
1/32" maximum relief

GENERAL INFORMATION

ATTACHMENT TO FORMWORK – Liners are attached to the form using TEK screws through the face of the liner spaced 12" C-C. Optional form mounting T-nuts embedded through the plywood backing is available for Elastospec panels.

FORM RELEASE – Apply with low flow, wide angle, flat spray nozzle and wipe with a cloth to insure a complete even coat to the entire form liner surface. Do not over apply form release agent. Protect treated form liners from precipitation, dust, and debris. Do not apply to reinforcing steel. **Dayton Superior Liner Coat? (J-4 LC)** form release is approved for all form liner materials.

TECHNICAL SUPPORT – Contact Spec Formliners, Inc. 888 429-9550



ThermoSpec™ Single Use HIGH IMPACT STYRENE

Property	ASTM	Rating
Tensile	D638	3,700
Izod Impact	D256	20
Vicat Softening	D1525	212
Material Weights - lbs/ft²		
0.070 MIL	0.090 MIL	0.150 MIL
0.393	0.506	0.843

ThermoSpec™ Multi-Use ABS REUSABLE PLASTIC

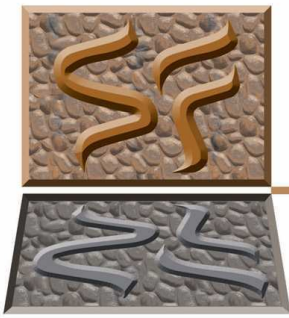
Property	ASTM	Rating
Tensile	D638	5,300
Flexural	D790	9,300
Hardness	D786	105
Material Weights - lbs/ft²		
0.110 MIL	0.150 MIL	0.200 MIL
0.621	0.847	1.129

ElastoSpec™ 100% Solid Urethane BONDED TO 3/4" PLYWOOD

Property	ASTM	Rating
Shore A	D2240	50-55
Tensile	D638	800 psi
Elongation	D638	600%
Tear Strength	D624	200 pli
Material Weights - lbs/ft²		
Varies by Pattern		

ThermoSpec™ Standard Panel Sizes: 48" x 96" or 48" x 120" Custom Sizes and Art Panels available

ElastoSpec™ Customized Panel Sizes and Art Panels



Spec Formliners

I N C O R P O R A T E D

Pattern Number: **1615**

Medium Bush Hammer

1/2" +/- bush hammer effect

GENERAL INFORMATION

ATTACHMENT TO FORMWORK – Liners are attached to the form using TEK screws through the face of the liner spaced 12" C-C. Optional form mounting T-nuts embedded through the plywood backing is available for Elastospec panels.

FORM RELEASE – Apply with low flow, wide angle, flat spray nozzle and wipe with a cloth to insure a complete even coat to the entire form liner surface. Do not over apply form release agent. Protect treated form liners from precipitation, dust, and debris. Do not apply to reinforcing steel. **Dayton Superior Liner Coat? (J-4 LC)** form release is approved for all form liner materials.

TECHNICAL SUPPORT – Contact Spec Formliners, Inc. 888 429-9550



ThermoSpec™ Single Use HIGH IMPACT STYRENE

Property	ASTM	Rating
Tensile	D638	3,700
Izod Impact	D256	20
Vicat Softening	D1525	212
Material Weights - lbs/ft²		
0.070 MIL	0.090 MIL	0.150 MIL
0.393	0.506	0.843

ThermoSpec™ Multi-Use ABS REUSABLE PLASTIC

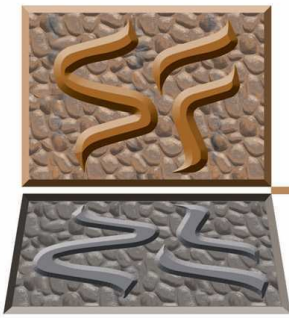
Property	ASTM	Rating
Tensile	D638	5,300
Flexural	D790	9,300
Hardness	D786	105
Material Weights - lbs/ft²		
0.110 MIL	0.150 MIL	0.200 MIL
0.621	0.847	1.129

ElastoSpec™ 100% Solid Urethane BONDED TO 3/4" PLYWOOD

Property	ASTM	Rating
Shore A	D2240	50-55
Tensile	D638	800 psi
Elongation	D638	600%
Tear Strength	D624	200 pli
Material Weights - lbs/ft²		
Varies by Pattern		

ThermoSpec™ Standard Panel Sizes: 48" x 96" or 48" x 120" Custom Sizes and Art Panels available

ElastoSpec™ Customized Panel Sizes and Art Panels



Spec Formliners

I N C O R P O R A T E D

Pattern Number: **1616**

Stucco Texture

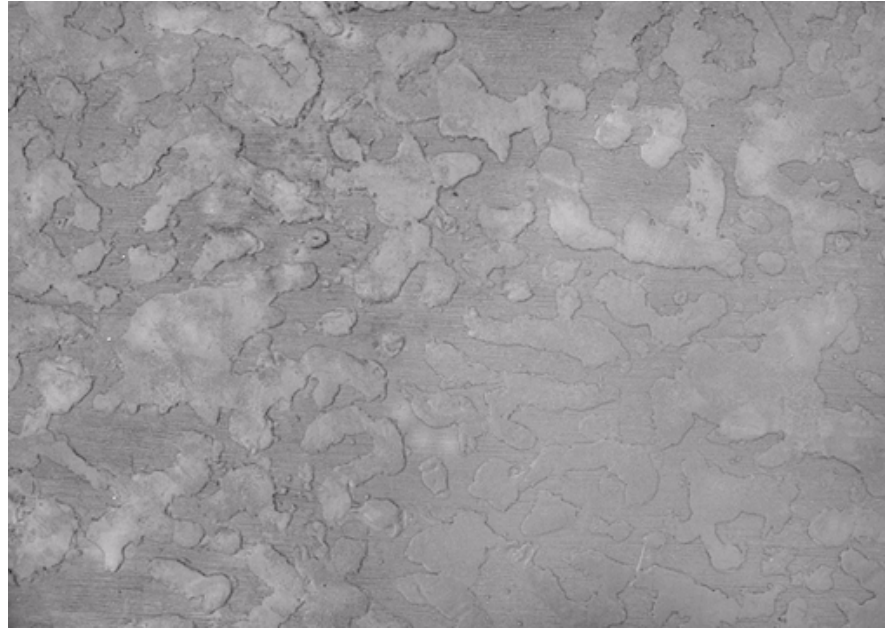
Minimum relief pattern
Trowelled Stucco Texture

GENERAL INFORMATION

ATTACHMENT TO FORMWORK – Liners are attached to the form using TEK screws through the face of the liner spaced 12" C-C. Optional form mounting T-nuts embedded through the plywood backing is available for Elastospec panels.

FORM RELEASE – Apply with low flow, wide angle, flat spray nozzle and wipe with a cloth to insure a complete even coat to the entire form liner surface. Do not over apply form release agent. Protect treated form liners from precipitation, dust, and debris. Do not apply to reinforcing steel. **Dayton Superior Liner Coat? (J-4 LC)** form release is approved for all form liner materials.

TECHNICAL SUPPORT – Contact Spec Formliners, Inc. 888 429-9550



ThermoSpec™ Single Use HIGH IMPACT STYRENE

Property	ASTM	Rating
Tensile	D638	3,700
Izod Impact	D256	20
Vicat Softening	D1525	212
Material Weights - lbs/ft²		
0.070 MIL	0.090 MIL	0.150 MIL
0.393	0.506	0.843

ThermoSpec™ Multi-Use ABS REUSABLE PLASTIC

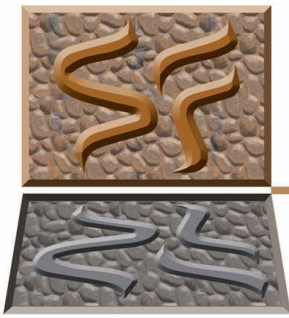
Property	ASTM	Rating
Tensile	D638	5,300
Flexural	D790	9,300
Hardness	D786	105
Material Weights - lbs/ft²		
0.110 MIL	0.150 MIL	0.200 MIL
0.621	0.847	1.129

ElastoSpec™ 100% Solid Urethane BONDED TO 3/4" PLYWOOD

Property	ASTM	Rating
Shore A	D2240	50-55
Tensile	D638	800 psi
Elongation	D638	600%
Tear Strength	D624	200 pli
Material Weights - lbs/ft²		
Varies by Pattern		

ThermoSpec™ Standard Panel Sizes: 48" x 96" or 48" x 120" Custom Sizes and Art Panels available

ElastoSpec™ Customized Panel Sizes and Art Panels



Spec Formliners

I N C O R P O R A T E D

Pattern Number: **1617**

Crushed Stone

Exposed aggregate crushed stone texture

GENERAL INFORMATION

ATTACHMENT TO FORMWORK – Liners are attached to the form using TEK screws through the face of the liner spaced 12" C-C. Optional form mounting T-nuts embedded through the plywood backing is available for Elastospec panels.

FORM RELEASE – Apply with low flow, wide angle, flat spray nozzle and wipe with a cloth to insure a complete even coat to the entire form liner surface. Do not over apply form release agent. Protect treated form liners from precipitation, dust, and debris. Do not apply to reinforcing steel. **Dayton Superior Liner Coat? (J-4 LC)** form release is approved for all form liner materials.

TECHNICAL SUPPORT – Contact Spec Formliners, Inc. 888 429-9550



ThermoSpec™ Single Use HIGH IMPACT STYRENE

Property	ASTM	Rating
Tensile	D638	3,700
Izod Impact	D256	20
Vicat Softening	D1525	212
Material Weights - lbs/ft²		
0.070 MIL	0.090 MIL	0.150 MIL
0.393	0.506	0.843

ThermoSpec™ Multi-Use ABS REUSABLE PLASTIC

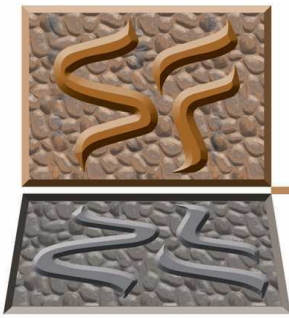
Property	ASTM	Rating
Tensile	D638	5,300
Flexural	D790	9,300
Hardness	D786	105
Material Weights - lbs/ft²		
0.110 MIL	0.150 MIL	0.200 MIL
0.621	0.847	1.129

ElastoSpec™ 100% Solid Urethane BONDED TO 3/4" PLYWOOD

Property	ASTM	Rating
Shore A	D2240	50-55
Tensile	D638	800 psi
Elongation	D638	600%
Tear Strength	D624	200 pli
Material Weights - lbs/ft²		
Varies by Pattern		

ThermoSpec™ Standard Panel Sizes: 48" x 96" or 48" x 120" Custom Sizes and Art Panels available

ElastoSpec™ Customized Panel Sizes and Art Panels



Spec Formliners

I N C O R P O R A T E D

Pattern Number: **1621**

Tasman Slate

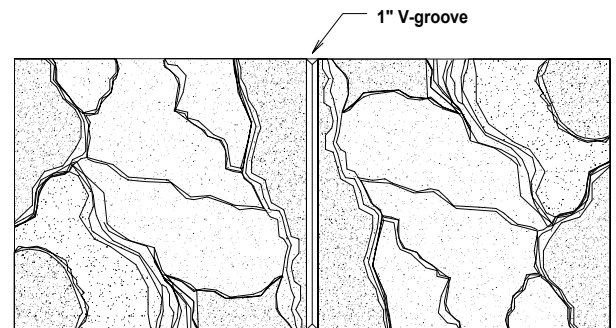
Two 47-1/2" square panels with 1" V-groove reveal

GENERAL INFORMATION

ATTACHMENT TO FORMWORK – Liners are attached to the form using TEK screws through the face of the liner spaced 12" C-C. Optional form mounting T-nuts embedded through the plywood backing is available for Elastospec panels.

FORM RELEASE – Apply with low flow, wide angle, flat spray nozzle and wipe with a cloth to insure a complete even coat to the entire form liner surface. Do not over apply form release agent. Protect treated form liners from precipitation, dust, and debris. Do not apply to reinforcing steel. **Dayton Superior Liner Coat? (J-4 LC)** form release is approved for all form liner materials.

TECHNICAL SUPPORT – Contact Spec Formliners, Inc. 888 429-9550



ThermoSpec™ Single Use HIGH IMPACT STYRENE

Property	ASTM	Rating
Tensile	D638	3,700
Izod Impact	D256	20
Vicat Softening	D1525	212
Material Weights - lbs/ft²		
0.070 MIL	0.090 MIL	0.150 MIL
0.393	0.506	0.843

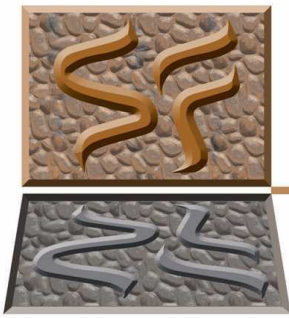
ThermoSpec™ Multi-Use ABS REUSABLE PLASTIC

Property	ASTM	Rating
Tensile	D638	5,300
Flexural	D790	9,300
Hardness	D786	105
Material Weights - lbs/ft²		
0.110 MIL	0.150 MIL	0.200 MIL
0.621	0.847	1.129

ElastoSpec™ 100% Solid Urethane BONDED TO 3/4" PLYWOOD

Property	ASTM	Rating
Shore A	D2240	50-55
Tensile	D638	800 psi
Elongation	D638	600%
Tear Strength	D624	200 pli
Material Weights - lbs/ft²		
Varies by Pattern		

ThermoSpec™ Standard Panel Sizes: 48" x 96" or 48" x 120" Custom Sizes and Art Panels available
ElastoSpec™ Customized Panel Sizes and Art Panels



Spec Formliners

I N C O R P O R A T E D

Pattern Number: **1626**

Kleen Slate

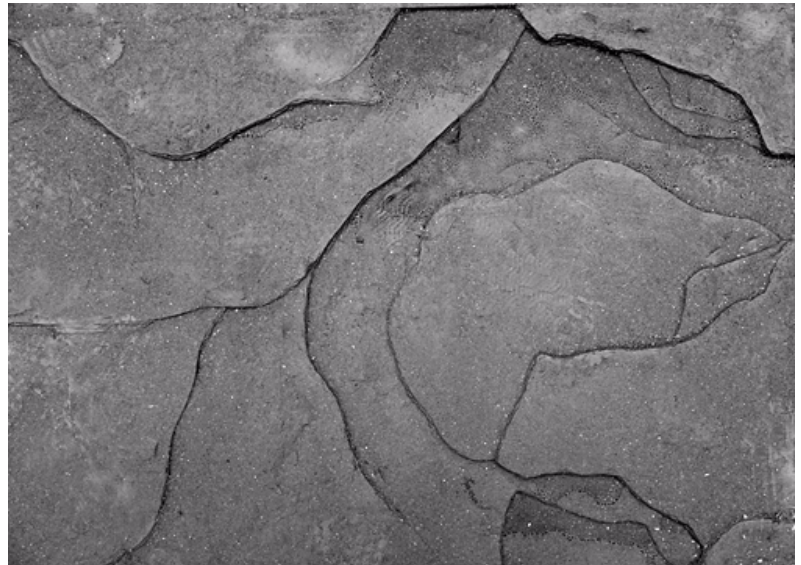
Split Slate Texture with 3/4" max. relief

GENERAL INFORMATION

ATTACHMENT TO FORMWORK – Liners are attached to the form using TEK screws through the face of the liner spaced 12" C-C. Optional form mounting T-nuts embedded through the plywood backing is available for Elastospec panels.

FORM RELEASE – Apply with low flow, wide angle, flat spray nozzle and wipe with a cloth to insure a complete even coat to the entire form liner surface. Do not over apply form release agent. Protect treated form liners from precipitation, dust, and debris. Do not apply to reinforcing steel. **Dayton Superior Liner Coat? (J-4 LC)** form release is approved for all form liner materials.

TECHNICAL SUPPORT – Contact Spec Formliners, Inc. 888 429-9550



ThermoSpec™ Single Use HIGH IMPACT STYRENE

Property	ASTM	Rating
Tensile	D638	3,700
Izod Impact	D256	20
Vicat Softening	D1525	212
Material Weights - lbs/ft²		
0.070 MIL	0.090 MIL	0.150 MIL
0.393	0.506	0.843

ThermoSpec™ Multi-Use ABS REUSABLE PLASTIC

Property	ASTM	Rating
Tensile	D638	5,300
Flexural	D790	9,300
Hardness	D786	105
Material Weights - lbs/ft²		
0.110 MIL	0.150 MIL	0.200 MIL
0.621	0.847	1.129

ElastoSpec™ 100% Solid Urethane BONDED TO 3/4" PLYWOOD

Property	ASTM	Rating
Shore A	D2240	50-55
Tensile	D638	800 psi
Elongation	D638	600%
Tear Strength	D624	200 pli
Material Weights - lbs/ft²		
Varies by Pattern		

ThermoSpec™ Standard Panel Sizes: 48" x 96" or 48" x 120" Custom Sizes and Art Panels available

ElastoSpec™ Customized Panel Sizes and Art Panels