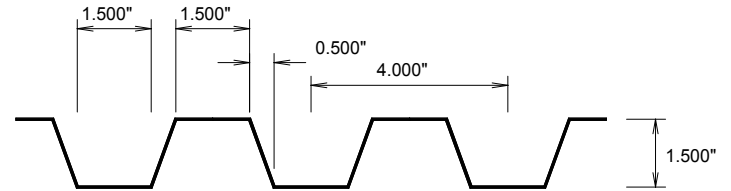
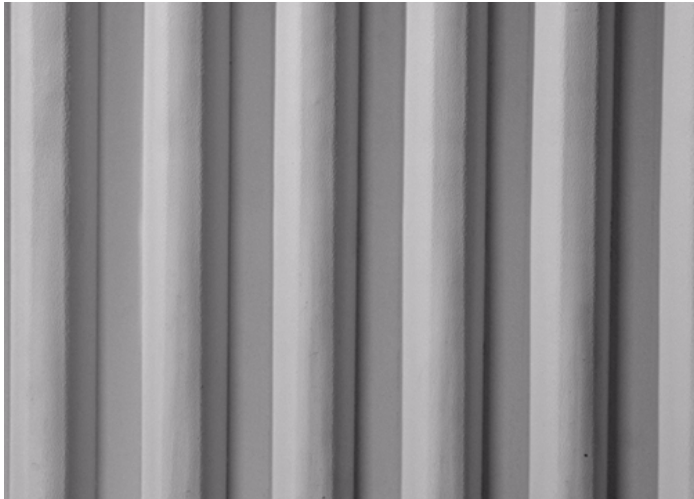


# Spec Formliners INCORPORATED

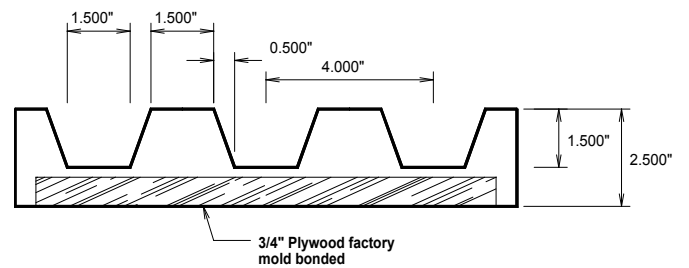
Pattern Number: **1702**

## 302 Standard Spec Flute

1-1/2" (38mm) deep flute  
4" (102mm) pattern repeat



Note: May require backing



### GENERAL INFORMATION

**ATTACHMENT TO FORMWORK** – Liners are attached to the form using TEK screws through the face of the liner spaced 12" C-C. Optional form mounting T-nuts embedded through the plywood backing is available for Elastospec panels.

**FORM RELEASE** – Apply with low flow, wide angle, flat spray nozzle and wipe with a cloth to insure a complete even coat to the entire form liner surface. Do not over apply form release agent. Protect treated form liners from precipitation, dust, and debris. Do not apply to reinforcing steel. Dayton Superior Liner Coat (J-4 LC) form release, or equal, is approved for all form liner materials.

**TECHNICAL SUPPORT** – Contact Spec Formliners, Inc. 888 429-9550

### ThermoSpec™ SINGLE OR MULTI-USE PLASTIC

Property	HIPS	ABS
Tensile D638	3700	5300
IFlexural D7905	-	9300
Hardness D786	-	105
<b>Material Weights - lbs/ft<sup>2</sup></b>		
0.070 MIL	0.110 MIL	0.150 MIL
0.393	0.621	0.843

### ElastoSpec Lite™ Semi-Elastomeric PLYWOOD SUBSTRUCTURE

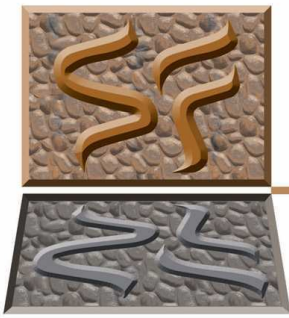
Property	ASTM	Rating
Shore D	D2240	65
Tensile	D412	3000 psi
Elongation	D412	300%
Tear Strength	D2370	23 MPa
<b>Material Weights - lbs/ft<sup>2</sup></b>		
Varies by Pattern		

### ElastoSpec™ 100% Solid Urethane BONDED TO 3/4" PLYWOOD

Property	ASTM	Rating
Shore A	D2240	50-55
Tensile	D638	800 psi
Elongation	D638	600%
Tear Strength	D624	200 pli
<b>Material Weights - lbs/ft<sup>2</sup></b>		
Varies by Pattern		

**ThermoSpec™ Standard Panel Sizes: 48" x 96" or 48" x 120" Custom Sizes and Art Panels available**

**ElastoSpec™ Customized Panel Sizes and Art Panels**

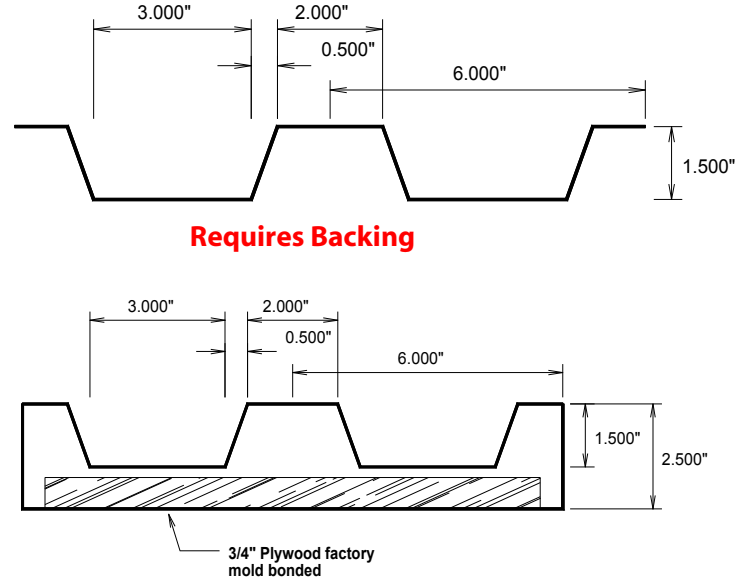
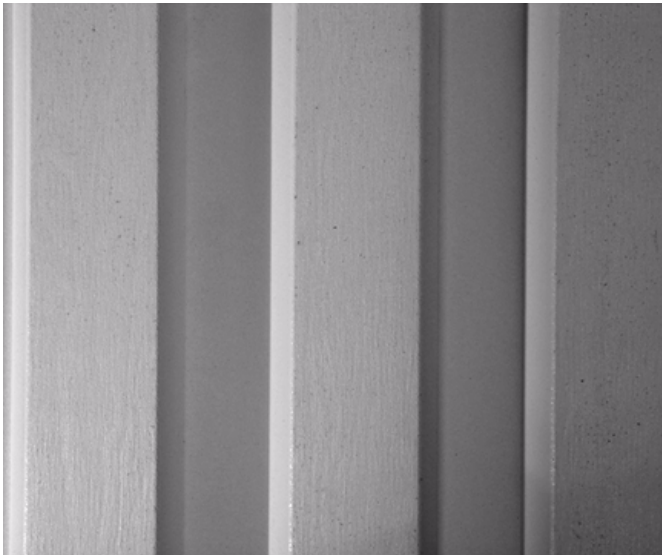


# Spec Formliners INCORPORATED

Pattern Number: **1703**

## Filmore Flute

1-1/2" (38mm) deep flute  
6" (152mm) pattern repeat



### GENERAL INFORMATION

**ATTACHMENT TO FORMWORK** – Liners are attached to the form using TEK screws through the face of the liner spaced 12" C-C. Optional form mounting T-nuts embedded through the plywood backing is available for Elastospec panels.

**FORM RELEASE** – Apply with low flow, wide angle, flat spray nozzle and wipe with a cloth to insure a complete even coat to the entire form liner surface. Do not over apply form release agent. Protect treated form liners from precipitation, dust, and debris. Do not apply to reinforcing steel. Dayton Superior Liner Coat (J-4 LC) form release, or equal, is approved for all form liner materials.

**TECHNICAL SUPPORT** – Contact Spec Formliners, Inc. 888 429-9550

### ThermoSpec™ SINGLE OR MULTI-USE PLASTIC

Property	HIPS	ABS
Tensile D638	3700	5300
IFlexural D7905	-	9300
Hardness D786	-	105
<b>Material Weights - lbs/ft<sup>2</sup></b>		
0.070 MIL	0.110 MIL	0.150 MIL
0.393	0.621	0.843

### ElastoSpec Lite™ Semi-Elastomeric PLYWOOD SUBSTRUCTURE

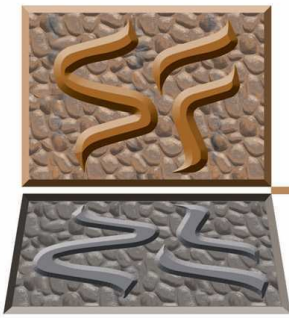
Property	ASTM	Rating
Shore D	D2240	65
Tensile	D412	3000 psi
Elongation	D412	300%
Tear Strength	D2370	23 MPa
<b>Material Weights - lbs/ft<sup>2</sup></b>		
Varies by Pattern		

### ElastoSpec™ 100% Solid Urethane BONDED TO 3/4" PLYWOOD

Property	ASTM	Rating
Shore A	D2240	50-55
Tensile	D638	800 psi
Elongation	D638	600%
Tear Strength	D624	200 pli
<b>Material Weights - lbs/ft<sup>2</sup></b>		
Varies by Pattern		

**ThermoSpec™ Standard Panel Sizes: 48" x 96" or 48" x 120" Custom Sizes and Art Panels available**

**ElastoSpec™ Customized Panel Sizes and Art Panels**



# Spec Formliners

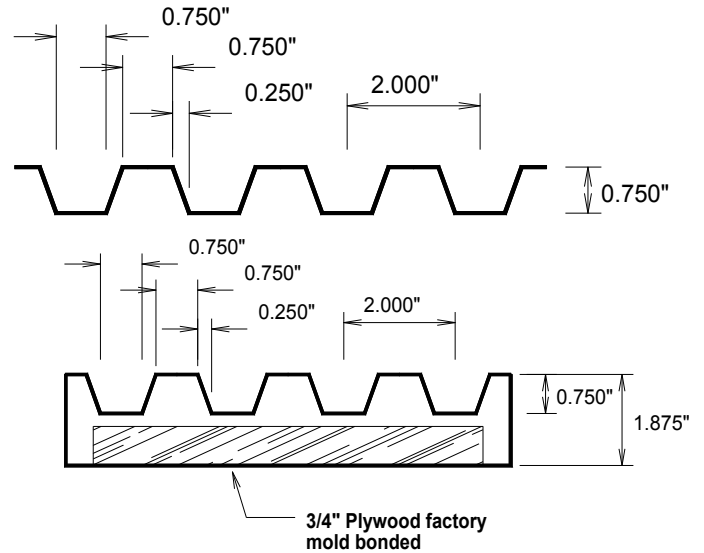
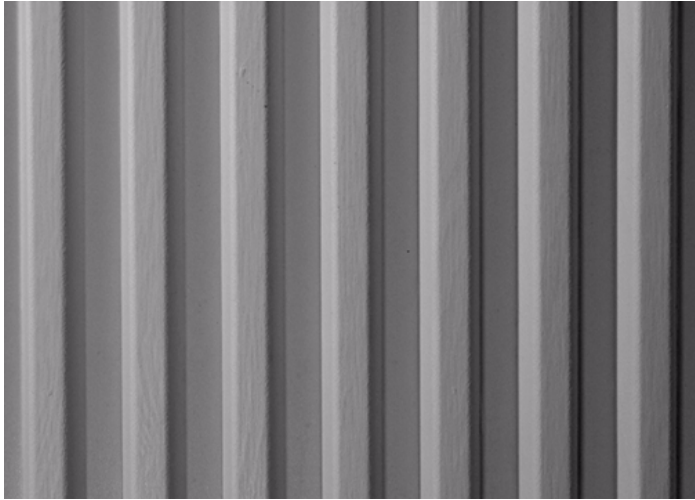
INCORPORATED

Pattern Number: **1704**

## 304 Standard Spec Flute

3/4" (19mm) deep fractured fin

2" (51mm) pattern repeat



### GENERAL INFORMATION

**ATTACHMENT TO FORMWORK** – Liners are attached to the form using TEK screws through the face of the liner spaced 12" C-C. Optional form mounting T-nuts embedded through the plywood backing is available for Elastospec panels.

**FORM RELEASE** – Apply with low flow, wide angle, flat spray nozzle and wipe with a cloth to insure a complete even coat to the entire form liner surface. Do not over apply form release agent. Protect treated form liners from precipitation, dust, and debris. Do not apply to reinforcing steel. Dayton Superior Liner Coat (J-4 LC) form release, or equal, is approved for all form liner materials.

**TECHNICAL SUPPORT** – Contact Spec Formliners, Inc. 888 429-9550

### ThermoSpec™ SINGLE OR MULTI-USE PLASTIC

Property	HIPS	ABS
Tensile D638	3700	5300
IFlexural D7905	-	9300
Hardness D786	-	105
<b>Material Weights - lbs/ft<sup>2</sup></b>		
0.070 MIL	0.110 MIL	0.150 MIL
0.393	0.621	0.843

### ElastoSpec Lite™ Semi-Elastomeric PLYWOOD SUBSTRUCTURE

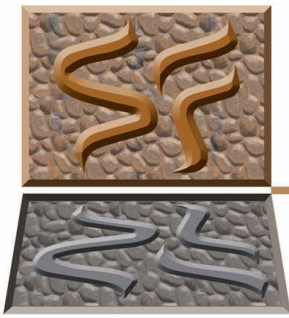
Property	ASTM	Rating
Shore D	D2240	65
Tensile	D412	3000 psi
Elongation	D412	300%
Tear Strength	D2370	23 MPa
<b>Material Weights - lbs/ft<sup>2</sup></b>		
Varies by Pattern		

### ElastoSpec™ 100% Solid Urethane BONDED TO 3/4" PLYWOOD

Property	ASTM	Rating
Shore A	D2240	50-55
Tensile	D638	800 psi
Elongation	D638	600%
Tear Strength	D624	200 pli
<b>Material Weights - lbs/ft<sup>2</sup></b>		
Varies by Pattern		

**ThermoSpec™ Standard Panel Sizes: 48" x 96" or 48" x 120" Custom Sizes and Art Panels available**

**ElastoSpec™ Customized Panel Sizes and Art Panels**



# Spec Formliners

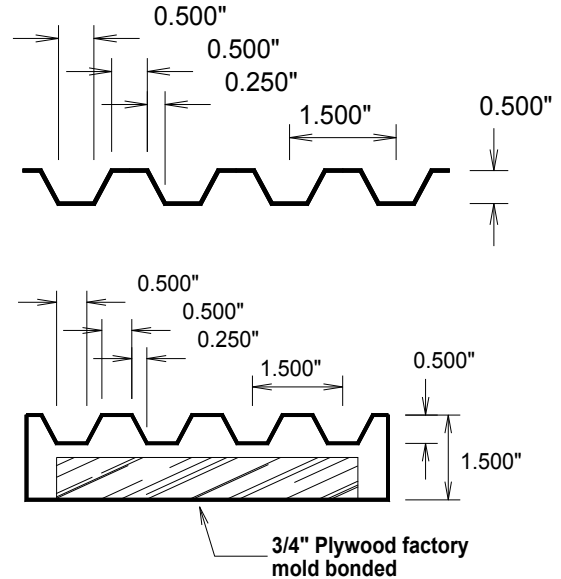
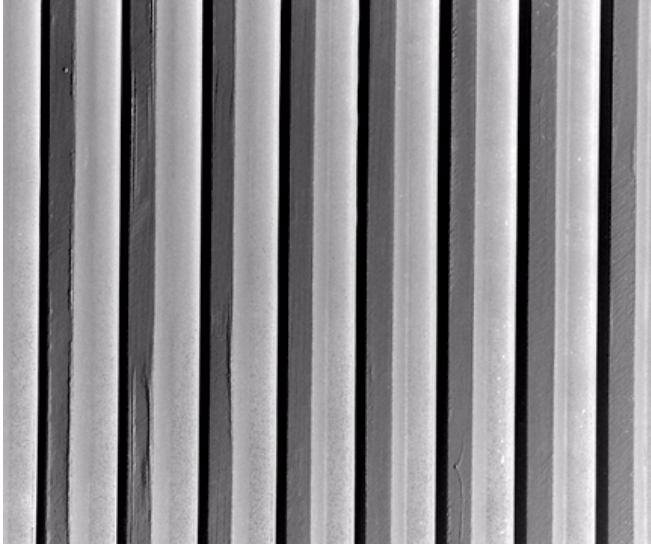
INCORPORATED

Pattern Number: **1705**

## 305 Standard Spec Flute

1/2" (13mm) deep flute

1-1/2" (38mm) pattern repeat



### GENERAL INFORMATION

**ATTACHMENT TO FORMWORK** – Liners are attached to the form using TEK screws through the face of the liner spaced 12" C-C. Optional form mounting T-nuts embedded through the plywood backing is available for Elastospec panels.

**FORM RELEASE** – Apply with low flow, wide angle, flat spray nozzle and wipe with a cloth to insure a complete even coat to the entire form liner surface. Do not over apply form release agent. Protect treated form liners from precipitation, dust, and debris. Do not apply to reinforcing steel. Dayton Superior Liner Coat (J-4 LC) form release, or equal, is approved for all form liner materials.

**TECHNICAL SUPPORT** – Contact Spec Formliners, Inc. 888 429-9550

### ThermoSpec™ SINGLE OR MULTI-USE PLASTIC

Property	HIPS	ABS
Tensile D638	3700	5300
IFlexural D7905	-	9300
Hardness D786	-	105
<b>Material Weights - lbs/ft<sup>2</sup></b>		
0.070 MIL	0.110 MIL	0.150 MIL
0.393	0.621	0.843

### ElastoSpec Lite™ Semi-Elastomeric PLYWOOD SUBSTRUCTURE

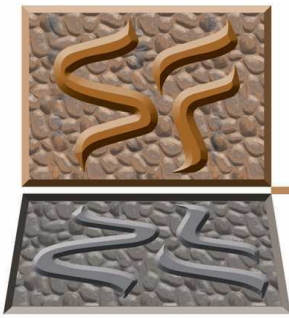
Property	ASTM	Rating
Shore D	D2240	65
Tensile	D412	3000 psi
Elongation	D412	300%
Tear Strength	D2370	23 MPa
<b>Material Weights - lbs/ft<sup>2</sup></b>		
Varies by Pattern		

### ElastoSpec™ 100% Solid Urethane BONDED TO 3/4" PLYWOOD

Property	ASTM	Rating
Shore A	D2240	50-55
Tensile	D638	800 psi
Elongation	D638	600%
Tear Strength	D624	200 pli
<b>Material Weights - lbs/ft<sup>2</sup></b>		
Varies by Pattern		

**ThermoSpec™ Standard Panel Sizes: 48" x 96" or 48" x 120" Custom Sizes and Art Panels available**

**ElastoSpec™ Customized Panel Sizes and Art Panels**



# Spec Formliners

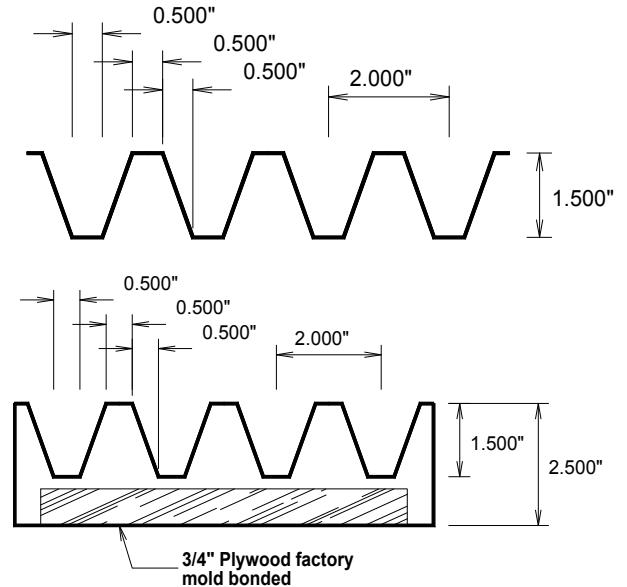
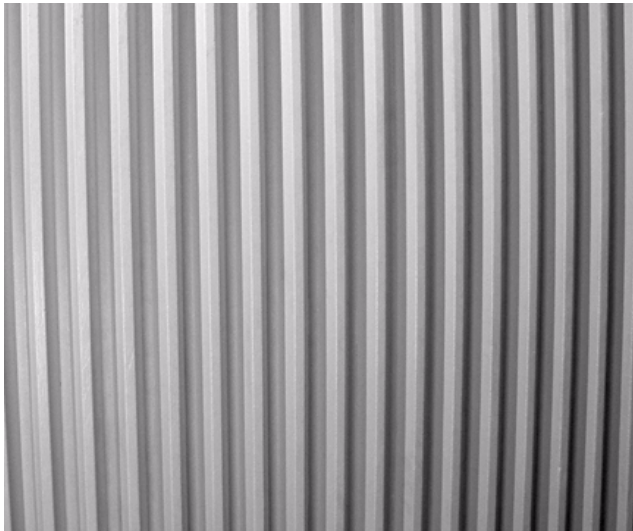
I N C O R P O R A T E D

Pattern Number: **1706**

## 303 Standard Spec Flute

1-1/2" (38mm) deep smooth flute

2" (51mm) pattern repeat



### GENERAL INFORMATION

**ATTACHMENT TO FORMWORK** – Liners are attached to the form using TEK screws through the face of the liner spaced 12" C-C. Optional form mounting T-nuts embedded through the plywood backing is available for Elastospec panels.

**FORM RELEASE** – Apply with low flow, wide angle, flat spray nozzle and wipe with a cloth to insure a complete even coat to the entire form liner surface. Do not over apply form release agent. Protect treated form liners from precipitation, dust, and debris. Do not apply to reinforcing steel. Dayton Superior Liner Coat (J-4 LC) form release, or equal, is approved for all form liner materials.

**TECHNICAL SUPPORT** – Contact Spec Formliners, Inc. 888 429-9550

### ThermoSpec™ SINGLE OR MULTI-USE PLASTIC

Property	HIPS	ABS
Tensile D638	3700	5300
IFlexural D7905	-	9300
Hardness D786	-	105
<b>Material Weights - lbs/ft<sup>2</sup></b>		
0.070 MIL	0.110 MIL	0.150 MIL
0.393	0.621	0.843

### ElastoSpec Lite™ Semi-Elastomeric PLYWOOD SUBSTRUCTURE

Property	ASTM	Rating
Shore D	D2240	65
Tensile	D412	3000 psi
Elongation	D412	300%
Tear Strength	D2370	23 MPa
<b>Material Weights - lbs/ft<sup>2</sup></b>		
Varies by Pattern		

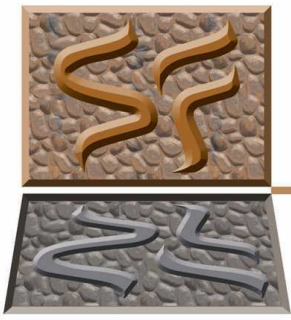
### ElastoSpec™ 100% Solid Urethane BONDED TO 3/4" PLYWOOD

Property	ASTM	Rating
Shore A	D2240	50-55
Tensile	D638	800 psi
Elongation	D638	600%
Tear Strength	D624	200 pli
<b>Material Weights - lbs/ft<sup>2</sup></b>		
Varies by Pattern		

**ThermoSpec™ Standard Panel Sizes: 48" x 96" or 48" x 120" Custom Sizes and Art Panels available**

**ElastoSpec™ Customized Panel Sizes and Art Panels**





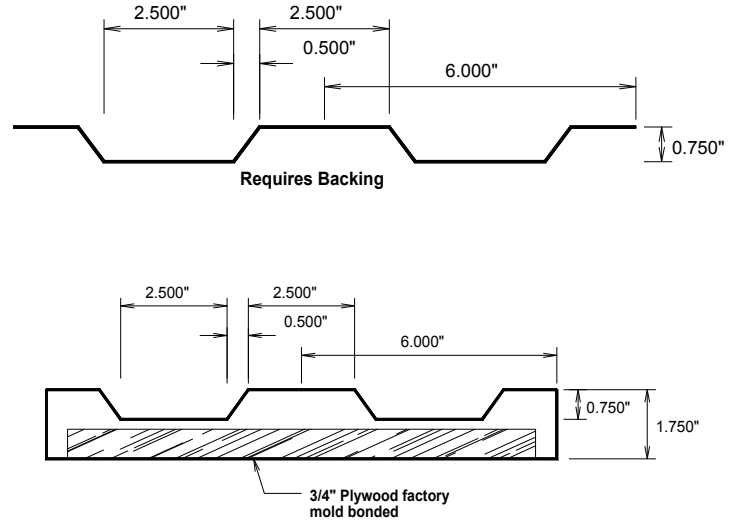
# Spec Formliners

INCORPORATED

Pattern Number: **1707**

## Lincoln Flute

**3/4" (19mm) deep smooth rib**  
**6" (152mm) pattern repeat**



### GENERAL INFORMATION

**ATTACHMENT TO FORMWORK** – Liners are attached to the form using TEK screws through the face of the liner spaced 12" C-C. Optional form mounting T-nuts embedded through the plywood backing is available for Elastospec panels.

**FORM RELEASE** – Apply with low flow, wide angle, flat spray nozzle and wipe with a cloth to insure a complete even coat to the entire form liner surface. Do not over apply form release agent. Protect treated form liners from precipitation, dust, and debris. Do not apply to reinforcing steel. Dayton Superior Liner Coat (J-4 LC) form release, or equal, is approved for all form liner materials.

**TECHNICAL SUPPORT** – Contact Spec Formliners, Inc. 888 429-9550

### ThermoSpec™ SINGLE OR MULTI-USE PLASTIC

Property	HIPS	ABS
Tensile D638	3700	5300
IFlexural D7905	-	9300
Hardness D786	-	105
<b>Material Weights - lbs/ft<sup>2</sup></b>		
0.070 MIL	0.110 MIL	0.150 MIL
0.393	0.621	0.843

### ElastoSpec Lite™ Semi-Elastomeric PLYWOOD SUBSTRUCTURE

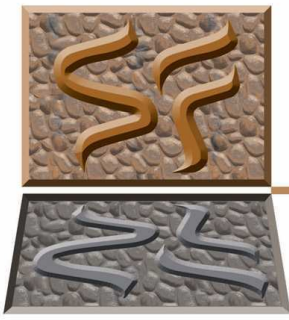
Property	ASTM	Rating
Shore D	D2240	65
Tensile	D412	3000 psi
Elongation	D412	300%
Tear Strength	D2370	23 MPa
<b>Material Weights - lbs/ft<sup>2</sup></b>		
Varies by Pattern		

### ElastoSpec™ 100% Solid Urethane BONDED TO 3/4" PLYWOOD

Property	ASTM	Rating
Shore A	D2240	50-55
Tensile	D638	800 psi
Elongation	D638	600%
Tear Strength	D624	200 pli
<b>Material Weights - lbs/ft<sup>2</sup></b>		
Varies by Pattern		

**ThermoSpec™ Standard Panel Sizes: 48" x 96" or 48" x 120" Custom Sizes and Art Panels available**

**ElastoSpec™ Customized Panel Sizes and Art Panels**

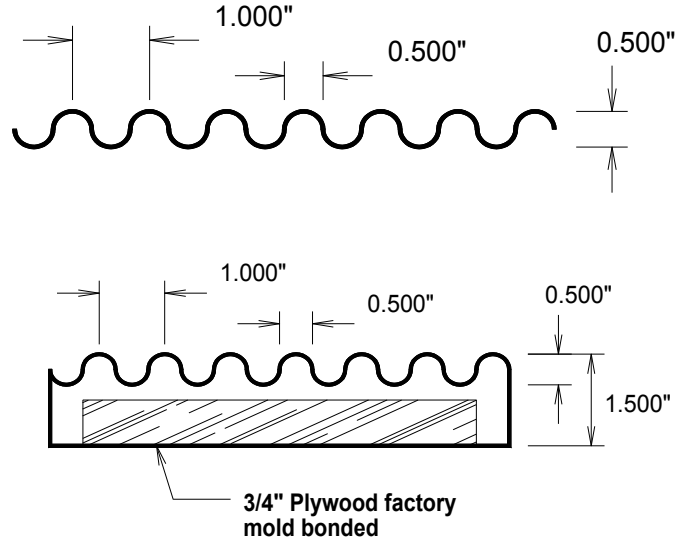
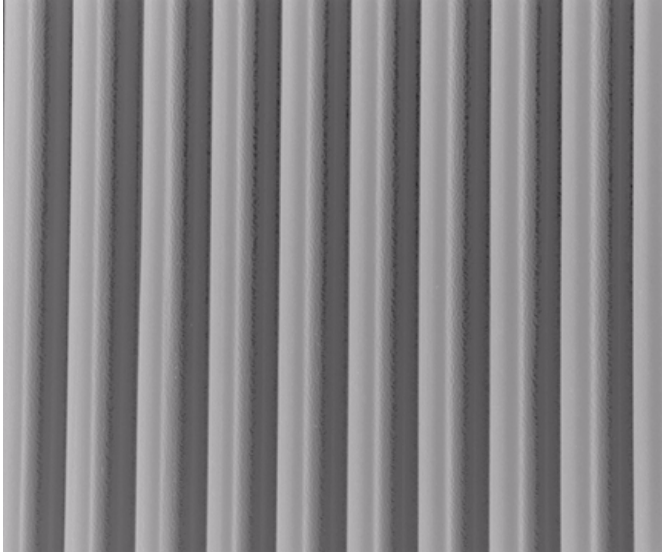


# Spec Formliners INCORPORATED

Pattern Number: **1708**

## 1/2" Sine Wave

1/2" (13mm) deep sine wave  
1" (25mm) pattern repeat



### GENERAL INFORMATION

**ATTACHMENT TO FORMWORK** – Liners are attached to the form using TEK screws through the face of the liner spaced 12" C-C. Optional form mounting T-nuts embedded through the plywood backing is available for Elastospec panels.

**FORM RELEASE** – Apply with low flow, wide angle, flat spray nozzle and wipe with a cloth to insure a complete even coat to the entire form liner surface. Do not over apply form release agent. Protect treated form liners from precipitation, dust, and debris. Do not apply to reinforcing steel. Dayton Superior Liner Coat (J-4 LC) form release, or equal, is approved for all form liner materials.

**TECHNICAL SUPPORT** – Contact Spec Formliners, Inc. 888 429-9550

### ThermoSpec™ SINGLE OR MULTI-USE PLASTIC

Property	HIPS	ABS
Tensile D638	3700	5300
IFlexural D7905	-	9300
Hardness D786	-	105
<b>Material Weights - lbs/ft<sup>2</sup></b>		
0.070 MIL	0.110 MIL	0.150 MIL
0.393	0.621	0.843

### ElastoSpec Lite™ Semi-Elastomeric PLYWOOD SUBSTRUCTURE

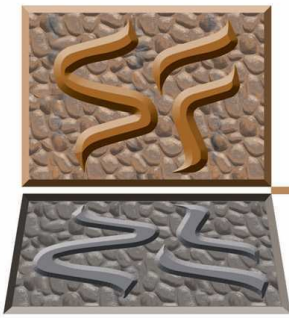
Property	ASTM	Rating
Shore D	D2240	65
Tensile	D412	3000 psi
Elongation	D412	300%
Tear Strength	D2370	23 MPa
<b>Material Weights - lbs/ft<sup>2</sup></b>		
Varies by Pattern		

### ElastoSpec™ 100% Solid Urethane BONDED TO 3/4" PLYWOOD

Property	ASTM	Rating
Shore A	D2240	50-55
Tensile	D638	800 psi
Elongation	D638	600%
Tear Strength	D624	200 pli
<b>Material Weights - lbs/ft<sup>2</sup></b>		
Varies by Pattern		

**ThermoSpec™ Standard Panel Sizes: 48" x 96" or 48" x 120" Custom Sizes and Art Panels available**

**ElastoSpec™ Customized Panel Sizes and Art Panels**



# Spec Formliners

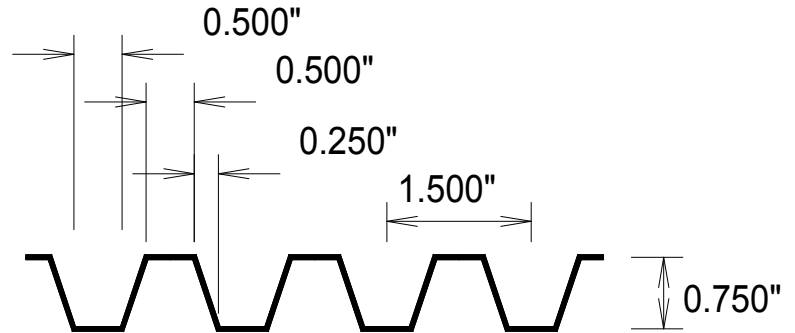
INCORPORATED

Pattern Number: **1709**

## Houston Flute

3/4" (19mm) deep sine wave  
1-1/2" (38mm) pattern repeat

Photo  
Available  
Soon



### GENERAL INFORMATION

**ATTACHMENT TO FORMWORK** – Liners are attached to the form using TEK screws through the face of the liner spaced 12" C-C. Optional form mounting T-nuts embedded through the plywood backing is available for Elastospec panels.

**FORM RELEASE** – Apply with low flow, wide angle, flat spray nozzle and wipe with a cloth to insure a complete even coat to the entire form liner surface. Do not over apply form release agent. Protect treated form liners from precipitation, dust, and debris. Do not apply to reinforcing steel. Dayton Superior Liner Coat (J-4 LC) form release, or equal, is approved for all form liner materials.

**TECHNICAL SUPPORT** – Contact Spec Formliners, Inc. 888 429-9550

### ThermoSpec™ SINGLE OR MULTI-USE PLASTIC

Property	HIPS	ABS
Tensile D638	3700	5300
IFlexural D7905	-	9300
Hardness D786	-	105
<b>Material Weights - lbs/ft<sup>2</sup></b>		
0.070 MIL	0.110 MIL	0.150 MIL
0.393	0.621	0.843

### ElastoSpec Lite™ Semi-Elastomeric PLYWOOD SUBSTRUCTURE

Property	ASTM	Rating
Shore D	D2240	65
Tensile	D412	3000 psi
Elongation	D412	300%
Tear Strength	D2370	23 MPa
<b>Material Weights - lbs/ft<sup>2</sup></b>		
Varies by Pattern		

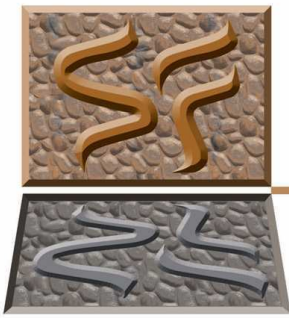
### ElastoSpec™ 100% Solid Urethane BONDED TO 3/4" PLYWOOD

Property	ASTM	Rating
Shore A	D2240	50-55
Tensile	D638	800 psi
Elongation	D638	600%
Tear Strength	D624	200 pli
<b>Material Weights - lbs/ft<sup>2</sup></b>		
Varies by Pattern		

**ThermoSpec™ Standard Panel Sizes: 48" x 96" or 48" x 120" Custom Sizes and Art Panels available**

**ElastoSpec™ Customized Panel Sizes and Art Panels**





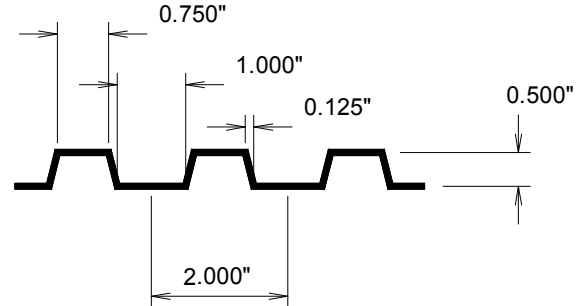
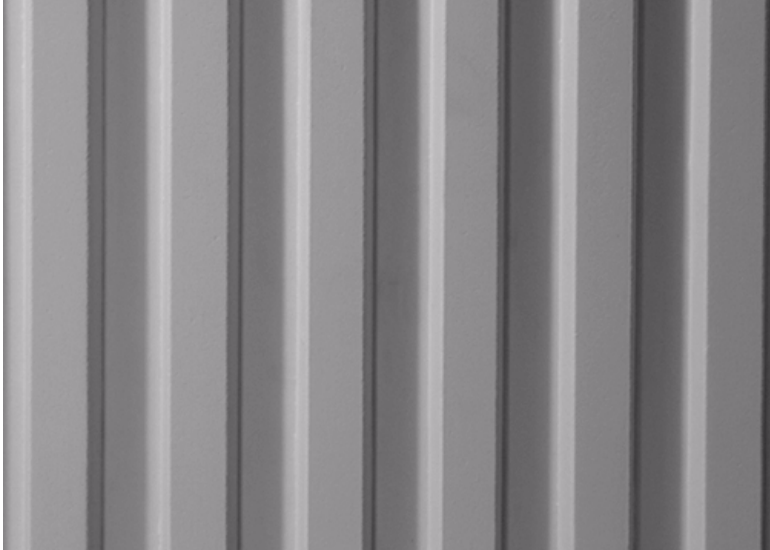
# Spec Formliners INCORPORATED

Pattern Number: **1710**

## Connecticut Flute

1/2" (13mm) depth

2" (51mm) pattern repeat



### GENERAL INFORMATION

**ATTACHMENT TO FORMWORK** – Liners are attached to the form using TEK screws through the face of the liner spaced 12" C-C. Optional form mounting T-nuts embedded through the plywood backing is available for Elastospec panels.

**FORM RELEASE** – Apply with low flow, wide angle, flat spray nozzle and wipe with a cloth to insure a complete even coat to the entire form liner surface. Do not over apply form release agent. Protect treated form liners from precipitation, dust, and debris. Do not apply to reinforcing steel. Dayton Superior Liner Coat (J-4 LC) form release, or equal, is approved for all form liner materials.

**TECHNICAL SUPPORT** – Contact Spec Formliners, Inc. 888 429-9550

### ThermoSpec™ SINGLE OR MULTI-USE PLASTIC

Property	HIPS	ABS
Tensile D638	3700	5300
IFlexural D7905	-	9300
Hardness D786	-	105
<b>Material Weights - lbs/ft<sup>2</sup></b>		
0.070 MIL	0.110 MIL	0.150 MIL
0.393	0.621	0.843

### ElastoSpec Lite™ Semi-Elastomeric PLYWOOD SUBSTRUCTURE

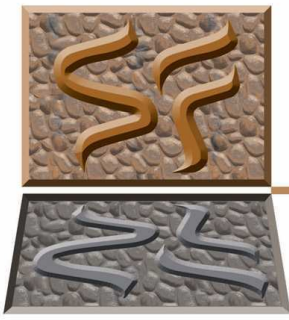
Property	ASTM	Rating
Shore D	D2240	65
Tensile	D412	3000 psi
Elongation	D412	300%
Tear Strength	D2370	23 MPa
<b>Material Weights - lbs/ft<sup>2</sup></b>		
Varies by Pattern		

### ElastoSpec™ 100% Solid Urethane BONDED TO 3/4" PLYWOOD

Property	ASTM	Rating
Shore A	D2240	50-55
Tensile	D638	800 psi
Elongation	D638	600%
Tear Strength	D624	200 pli
<b>Material Weights - lbs/ft<sup>2</sup></b>		
Varies by Pattern		

**ThermoSpec™ Standard Panel Sizes: 48" x 96" or 48" x 120" Custom Sizes and Art Panels available**

**ElastoSpec™ Customized Panel Sizes and Art Panels**

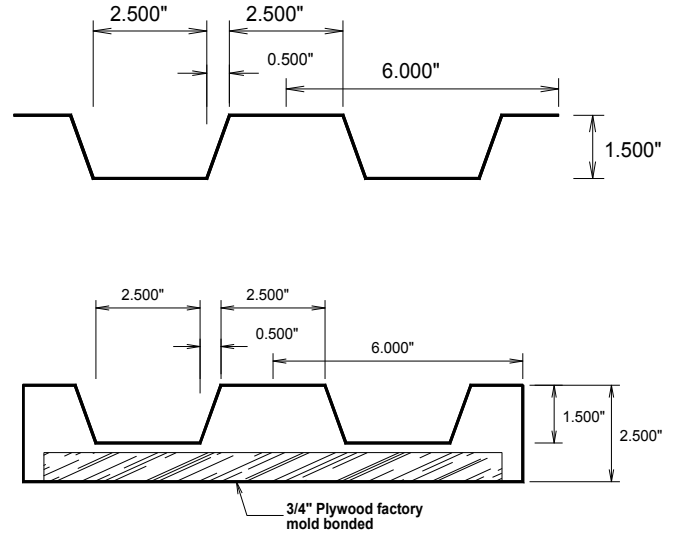


# Spec Formliners INCORPORATED

Pattern Number: **1712**

## Utah Flute

1-5/8" (41mm) deep smooth flute  
6" (152mm) pattern repeat



### GENERAL INFORMATION

**ATTACHMENT TO FORMWORK** – Liners are attached to the form using TEK screws through the face of the liner spaced 12" C-C. Optional form mounting T-nuts embedded through the plywood backing is available for Elastospec panels.

**FORM RELEASE** – Apply with low flow, wide angle, flat spray nozzle and wipe with a cloth to insure a complete even coat to the entire form liner surface. Do not over apply form release agent. Protect treated form liners from precipitation, dust, and debris. Do not apply to reinforcing steel. Dayton Superior Liner Coat (J-4 LC) form release, or equal, is approved for all form liner materials.

**TECHNICAL SUPPORT** – Contact Spec Formliners, Inc. 888 429-9550

### ThermoSpec™ SINGLE OR MULTI-USE PLASTIC

Property	HIPS	ABS
Tensile D638	3700	5300
IFlexural D7905	-	9300
Hardness D786	-	105
<b>Material Weights - lbs/ft<sup>2</sup></b>		
0.070 MIL	0.110 MIL	0.150 MIL
0.393	0.621	0.843

### ElastoSpec Lite™ Semi-Elastomeric PLYWOOD SUBSTRUCTURE

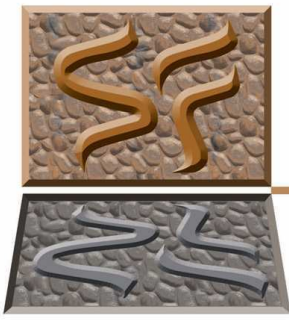
Property	ASTM	Rating
Shore D	D2240	65
Tensile	D412	3000 psi
Elongation	D412	300%
Tear Strength	D2370	23 MPa
<b>Material Weights - lbs/ft<sup>2</sup></b>		
Varies by Pattern		

### ElastoSpec™ 100% Solid Urethane BONDED TO 3/4" PLYWOOD

Property	ASTM	Rating
Shore A	D2240	50-55
Tensile	D638	800 psi
Elongation	D638	600%
Tear Strength	D624	200 pli
<b>Material Weights - lbs/ft<sup>2</sup></b>		
Varies by Pattern		

**ThermoSpec™ Standard Panel Sizes: 48" x 96" or 48" x 120" Custom Sizes and Art Panels available**

**ElastoSpec™ Customized Panel Sizes and Art Panels**



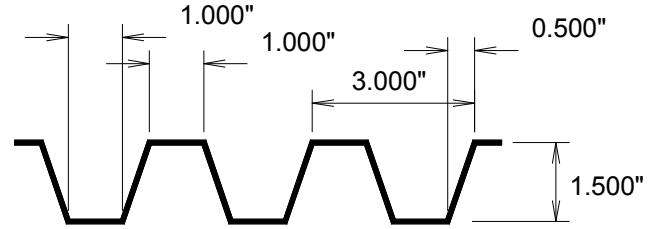
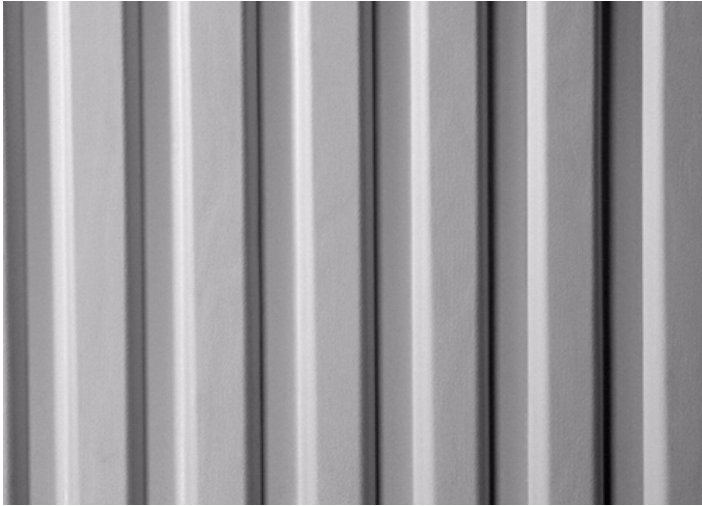
# Spec Formliners

INCORPORATED

Pattern Number: **1713**

## Colorado Flute

1-1/2" (38mm) depth  
3" (76mm) pattern repeat



### GENERAL INFORMATION

**ATTACHMENT TO FORMWORK** – Liners are attached to the form using TEK screws through the face of the liner spaced 12" C-C. Optional form mounting T-nuts embedded through the plywood backing is available for Elastospec panels.

**FORM RELEASE** – Apply with low flow, wide angle, flat spray nozzle and wipe with a cloth to insure a complete even coat to the entire form liner surface. Do not over apply form release agent. Protect treated form liners from precipitation, dust, and debris. Do not apply to reinforcing steel. Dayton Superior Liner Coat (J-4 LC) form release, or equal, is approved for all form liner materials.

**TECHNICAL SUPPORT** – Contact Spec Formliners, Inc. 888 429-9550

### ThermoSpec™ SINGLE OR MULTI-USE PLASTIC

Property	HIPS	ABS
Tensile D638	3700	5300
IFlexural D7905	-	9300
Hardness D786	-	105
<b>Material Weights - lbs/ft<sup>2</sup></b>		
0.070 MIL	0.110 MIL	0.150 MIL
0.393	0.621	0.843

### ElastoSpec Lite™ Semi-Elastomeric PLYWOOD SUBSTRUCTURE

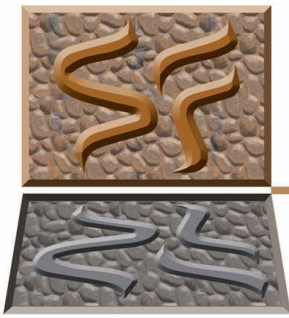
Property	ASTM	Rating
Shore D	D2240	65
Tensile	D412	3000 psi
Elongation	D412	300%
Tear Strength	D2370	23 MPa
<b>Material Weights - lbs/ft<sup>2</sup></b>		
Varies by Pattern		

### ElastoSpec™ 100% Solid Urethane BONDED TO 3/4" PLYWOOD

Property	ASTM	Rating
Shore A	D2240	50-55
Tensile	D638	800 psi
Elongation	D638	600%
Tear Strength	D624	200 pli
<b>Material Weights - lbs/ft<sup>2</sup></b>		
Varies by Pattern		

**ThermoSpec™ Standard Panel Sizes: 48" x 96" or 48" x 120" Custom Sizes and Art Panels available**

**ElastoSpec™ Customized Panel Sizes and Art Panels**



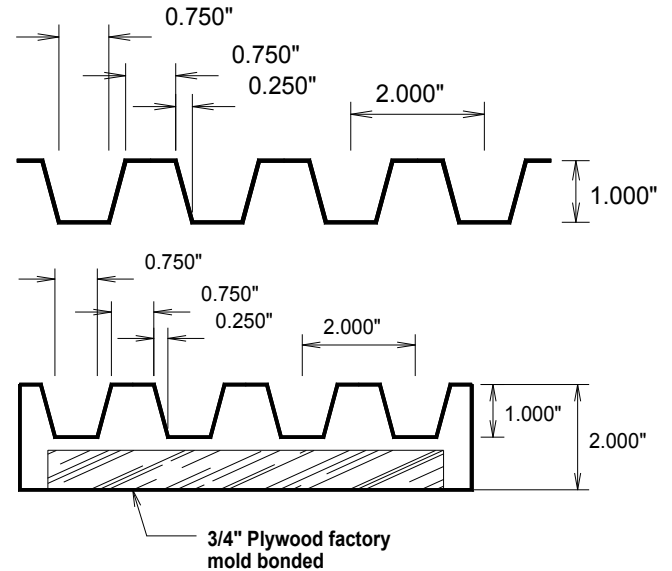
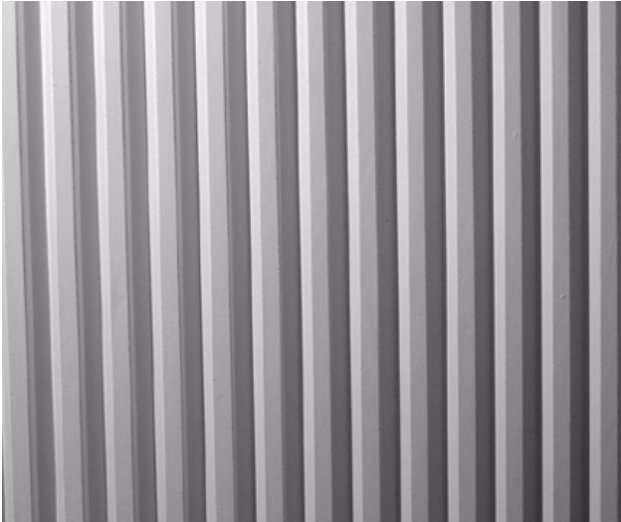
# Spec Formliners

I N C O R P O R A T E D

Pattern Number: **1714**

## Wilson Flute

**1" (25mm) deep smooth flute**  
**2" (51mm) pattern repeat**



### GENERAL INFORMATION

**ATTACHMENT TO FORMWORK** – Liners are attached to the form using TEK screws through the face of the liner spaced 12" C-C. Optional form mounting T-nuts embedded through the plywood backing is available for Elastospec panels.

**FORM RELEASE** – Apply with low flow, wide angle, flat spray nozzle and wipe with a cloth to insure a complete even coat to the entire form liner surface. Do not over apply form release agent. Protect treated form liners from precipitation, dust, and debris. Do not apply to reinforcing steel. Dayton Superior Liner Coat (J-4 LC) form release, or equal, is approved for all form liner materials.

**TECHNICAL SUPPORT** – Contact Spec Formliners, Inc. 888 429-9550

### ThermoSpec™ SINGLE OR MULTI-USE PLASTIC

Property	HIPS	ABS
Tensile D638	3700	5300
IFlexural D7905	-	9300
Hardness D786	-	105
<b>Material Weights - lbs/ft<sup>2</sup></b>		
0.070 MIL	0.110 MIL	0.150 MIL
0.393	0.621	0.843

### ElastoSpec Lite™ Semi-Elastomeric PLYWOOD SUBSTRUCTURE

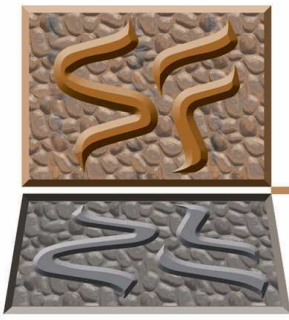
Property	ASTM	Rating
Shore D	D2240	65
Tensile	D412	3000 psi
Elongation	D412	300%
Tear Strength	D2370	23 MPa
<b>Material Weights - lbs/ft<sup>2</sup></b>		
Varies by Pattern		

### ElastoSpec™ 100% Solid Urethane BONDED TO 3/4" PLYWOOD

Property	ASTM	Rating
Shore A	D2240	50-55
Tensile	D638	800 psi
Elongation	D638	600%
Tear Strength	D624	200 pli
<b>Material Weights - lbs/ft<sup>2</sup></b>		
Varies by Pattern		

**ThermoSpec™ Standard Panel Sizes: 48" x 96" or 48" x 120" Custom Sizes and Art Panels available**

**ElastoSpec™ Customized Panel Sizes and Art Panels**



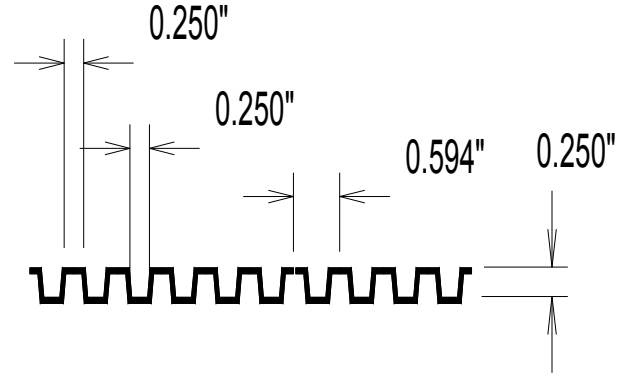
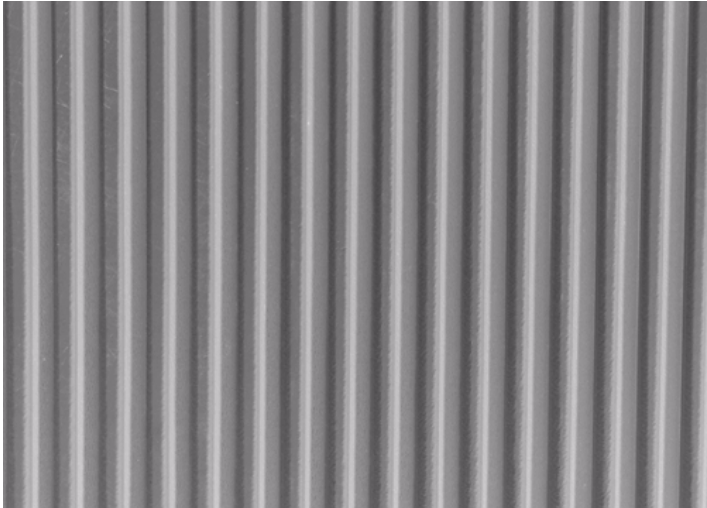
# Spec Formliners INCORPORATED

Pattern Number: **1715**

## San Diego Flute

1/4" (6mm) depth

19/32" (15mm) pattern repeat



### GENERAL INFORMATION

**ATTACHMENT TO FORMWORK** – Liners are attached to the form using TEK screws through the face of the liner spaced 12" C-C. Optional form mounting T-nuts embedded through the plywood backing is available for Elastospec panels.

**FORM RELEASE** – Apply with low flow, wide angle, flat spray nozzle and wipe with a cloth to insure a complete even coat to the entire form liner surface. Do not over apply form release agent. Protect treated form liners from precipitation, dust, and debris. Do not apply to reinforcing steel. Dayton Superior Liner Coat (J-4 LC) form release, or equal, is approved for all form liner materials.

**TECHNICAL SUPPORT** – Contact Spec Formliners, Inc. 888 429-9550

### ThermoSpec™ SINGLE OR MULTI-USE PLASTIC

Property	HIPS	ABS
Tensile D638	3700	5300
IFlexural D7905	-	9300
Hardness D786	-	105
<b>Material Weights - lbs/ft<sup>2</sup></b>		
0.070 MIL	0.110 MIL	0.150 MIL
0.393	0.621	0.843

### ElastoSpec Lite™ Semi-Elastomeric PLYWOOD SUBSTRUCTURE

Property	ASTM	Rating
Shore D	D2240	65
Tensile	D412	3000 psi
Elongation	D412	300%
Tear Strength	D2370	23 MPa
<b>Material Weights - lbs/ft<sup>2</sup></b>		
Varies by Pattern		

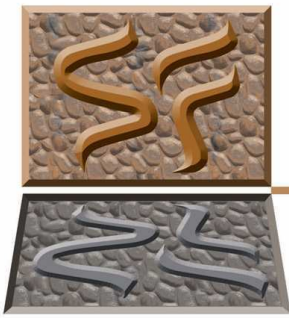
### ElastoSpec™ 100% Solid Urethane BONDED TO 3/4" PLYWOOD

Property	ASTM	Rating
Shore A	D2240	50-55
Tensile	D638	800 psi
Elongation	D638	600%
Tear Strength	D624	200 pli
<b>Material Weights - lbs/ft<sup>2</sup></b>		
Varies by Pattern		

**ThermoSpec™ Standard Panel Sizes: 48" x 96" or 48" x 120" Custom Sizes and Art Panels available**

**ElastoSpec™ Customized Panel Sizes and Art Panels**





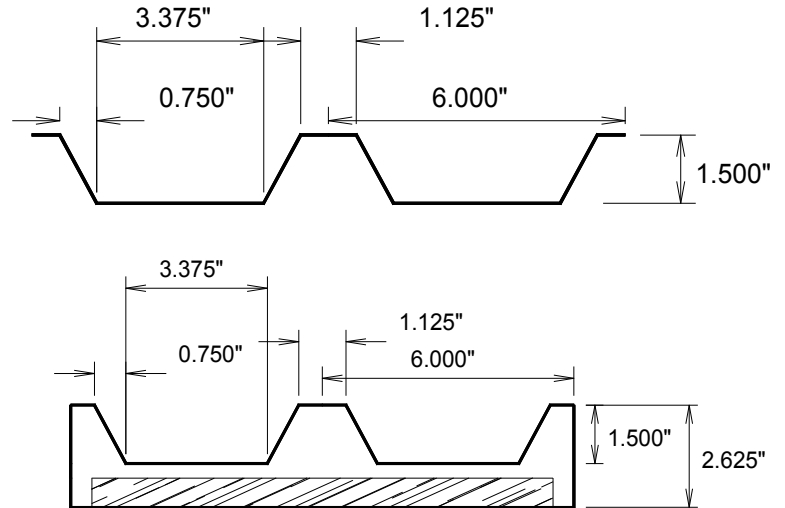
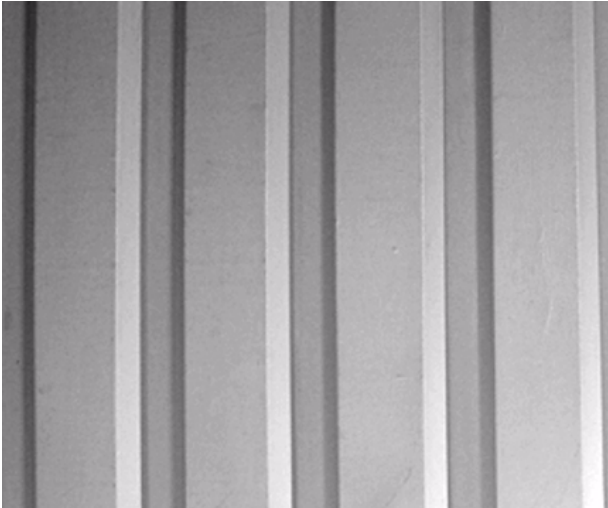
# Spec Formliners

INCORPORATED

Pattern Number: **1717**

## Santa Fe Flute

1-1/2" (38mm) deep smooth flute  
6" (152mm) pattern repeat



### GENERAL INFORMATION

**ATTACHMENT TO FORMWORK** – Liners are attached to the form using TEK screws through the face of the liner spaced 12" C-C. Optional form mounting T-nuts embedded through the plywood backing is available for Elastospec panels.

**FORM RELEASE** – Apply with low flow, wide angle, flat spray nozzle and wipe with a cloth to insure a complete even coat to the entire form liner surface. Do not over apply form release agent. Protect treated form liners from precipitation, dust, and debris. Do not apply to reinforcing steel. Dayton Superior Liner Coat (J-4 LC) form release, or equal, is approved for all form liner materials.

**TECHNICAL SUPPORT** – Contact Spec Formliners, Inc. 888 429-9550

### ThermoSpec™ SINGLE OR MULTI-USE PLASTIC

Property	HIPS	ABS
Tensile D638	3700	5300
IFlexural D7905	-	9300
Hardness D786	-	105
<b>Material Weights - lbs/ft<sup>2</sup></b>		
0.070 MIL	0.110 MIL	0.150 MIL
0.393	0.621	0.843

### ElastoSpec Lite™ Semi-Elastomeric PLYWOOD SUBSTRUCTURE

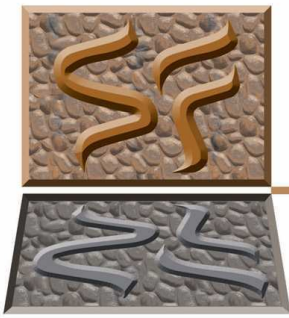
Property	ASTM	Rating
Shore D	D2240	65
Tensile	D412	3000 psi
Elongation	D412	300%
Tear Strength	D2370	23 MPa
<b>Material Weights - lbs/ft<sup>2</sup></b>		
Varies by Pattern		

### ElastoSpec™ 100% Solid Urethane BONDED TO 3/4" PLYWOOD

Property	ASTM	Rating
Shore A	D2240	50-55
Tensile	D638	800 psi
Elongation	D638	600%
Tear Strength	D624	200 pli
<b>Material Weights - lbs/ft<sup>2</sup></b>		
Varies by Pattern		

**ThermoSpec™ Standard Panel Sizes: 48" x 96" or 48" x 120" Custom Sizes and Art Panels available**

**ElastoSpec™ Customized Panel Sizes and Art Panels**



# Spec Formliners

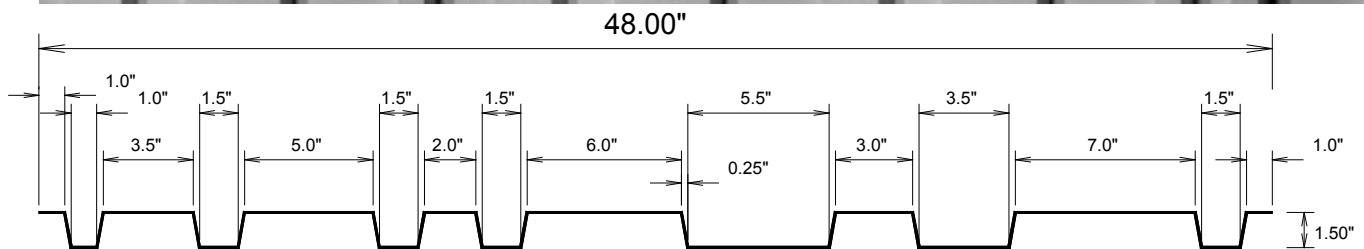
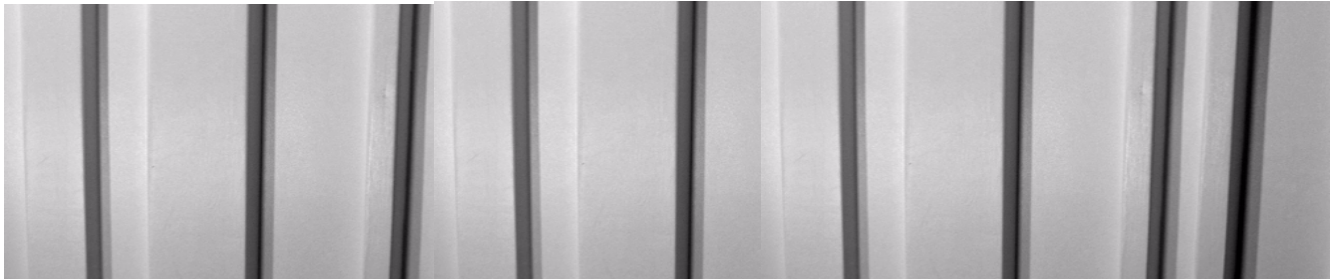
INCORPORATED

Pattern Number: **1718**

## Arizona DOT Random Flute

1-1/2" (38mm) deep smooth flute

48" (1219mm) pattern repeat



### GENERAL INFORMATION

**ATTACHMENT TO FORMWORK** – Liners are attached to the form using TEK screws through the face of the liner spaced 12" C-C. Optional form mounting T-nuts embedded through the plywood backing is available for Elastospec panels.

**FORM RELEASE** – Apply with low flow, wide angle, flat spray nozzle and wipe with a cloth to insure a complete even coat to the entire form liner surface. Do not over apply form release agent. Protect treated form liners from precipitation, dust, and debris. Do not apply to reinforcing steel. Dayton Superior Liner Coat (J-4 LC) form release, or equal, is approved for all form liner materials.

**TECHNICAL SUPPORT** – Contact Spec Formliners, Inc. 888 429-9550

### ThermoSpec™ SINGLE OR MULTI-USE PLASTIC

Property	HIPS	ABS
Tensile D638	3700	5300
IFlexural D7905	-	9300
Hardness D786	-	105
<b>Material Weights - lbs/ft<sup>2</sup></b>		
0.070 MIL	0.110 MIL	0.150 MIL
0.393	0.621	0.843

### ElastoSpec Lite™ Semi-Elastomeric PLYWOOD SUBSTRUCTURE

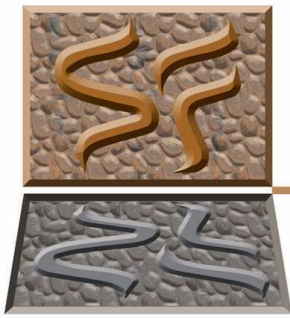
Property	ASTM	Rating
Shore D	D2240	65
Tensile	D412	3000 psi
Elongation	D412	300%
Tear Strength	D2370	23 MPa
<b>Material Weights - lbs/ft<sup>2</sup></b>		
Varies by Pattern		

### ElastoSpec™ 100% Solid Urethane BONDED TO 3/4" PLYWOOD

Property	ASTM	Rating
Shore A	D2240	50-55
Tensile	D638	800 psi
Elongation	D638	600%
Tear Strength	D624	200 pli
<b>Material Weights - lbs/ft<sup>2</sup></b>		
Varies by Pattern		

**ThermoSpec™ Standard Panel Sizes: 48" x 96" or 48" x 120" Custom Sizes and Art Panels available**

**ElastoSpec™ Customized Panel Sizes and Art Panels**

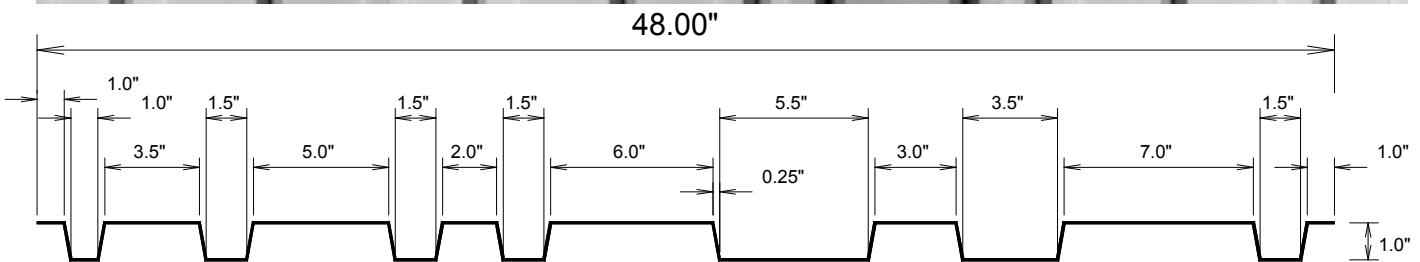
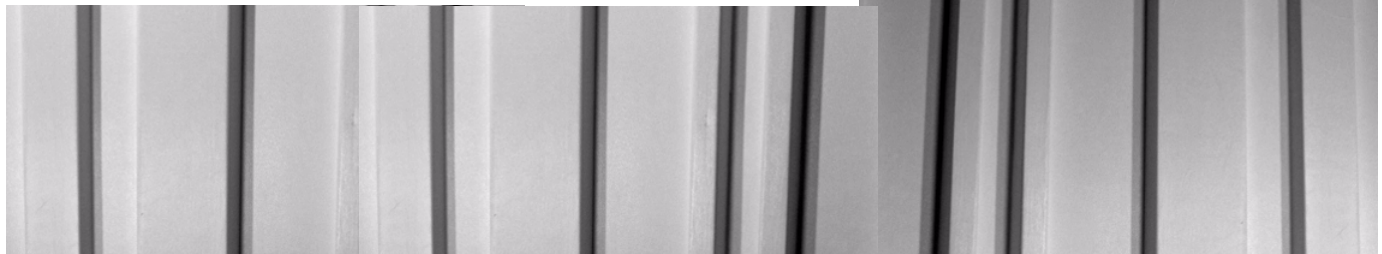


# Spec Formliners INCORPORATED

Pattern Number: **1718a**

## Arizona DOT Random Flute Modified

**1" (25mm) deep smooth flute**  
**48" (1219mm) pattern repeat**



### GENERAL INFORMATION

**ATTACHMENT TO FORMWORK** – Liners are attached to the form using TEK screws through the face of the liner spaced 12" C-C. Optional form mounting T-nuts embedded through the plywood backing is available for Elastospec panels.

**FORM RELEASE** – Apply with low flow, wide angle, flat spray nozzle and wipe with a cloth to insure a complete even coat to the entire form liner surface. Do not over apply form release agent. Protect treated form liners from precipitation, dust, and debris. Do not apply to reinforcing steel. Dayton Superior Liner Coat (J-4 LC) form release, or equal, is approved for all form liner materials.

**TECHNICAL SUPPORT** – Contact Spec Formliners, Inc. 888 429-9550

### ThermoSpec™ SINGLE OR MULTI-USE PLASTIC

Property	HIPS	ABS
Tensile D638	3700	5300
IFlexural D7905	-	9300
Hardness D786	-	105
<b>Material Weights - lbs/ft<sup>2</sup></b>		
0.070 MIL	0.110 MIL	0.150 MIL
0.393	0.621	0.843

### ElastoSpec Lite™ Semi-Elastomeric PLYWOOD SUBSTRUCTURE

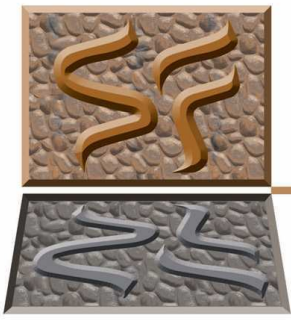
Property	ASTM	Rating
Shore D	D2240	65
Tensile	D412	3000 psi
Elongation	D412	300%
Tear Strength	D2370	23 MPa
<b>Material Weights - lbs/ft<sup>2</sup></b>		
Varies by Pattern		

### ElastoSpec™ 100% Solid Urethane BONDED TO 3/4" PLYWOOD

Property	ASTM	Rating
Shore A	D2240	50-55
Tensile	D638	800 psi
Elongation	D638	600%
Tear Strength	D624	200 pli
<b>Material Weights - lbs/ft<sup>2</sup></b>		
Varies by Pattern		

**ThermoSpec™ Standard Panel Sizes: 48" x 96" or 48" x 120" Custom Sizes and Art Panels available**

**ElastoSpec™ Customized Panel Sizes and Art Panels**



# Spec Formliners

I N C O R P O R A T E D

Pattern Number: **1719**

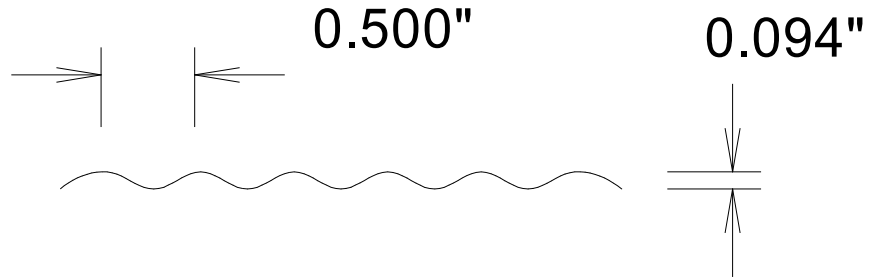
**1/8" Sine Wave**

## GENERAL INFORMATION

**ATTACHMENT TO FORMWORK** – Liners are attached to the form using TEK screws through the face of the liner spaced 12" C-C. Optional form mounting T-nuts embedded through the plywood backing is available for Elastospec panels.

**FORM RELEASE** – Apply with low flow, wide angle, flat spray nozzle and wipe with a cloth to insure a complete even coat to the entire form liner surface. Do not over apply form release agent. Protect treated form liners from precipitation, dust, and debris. Do not apply to reinforcing steel. Dayton Superior Liner Coat (J-4 LC) form release or equal is approved for all form liner materials.

**TECHNICAL SUPPORT** – Contact Spec Formliners, Inc. 888 429-9550



### ThermoSpec™ SINGLE OR MULTI-USE PLASTIC

Property	HIPS	ABS
Tensile D638	3700	5300
IFlexural D7905	-	9300
Hardness D786	-	105
<b>Material Weights - lbs/ft<sup>2</sup></b>		
0.070 MIL	0.110 MIL	0.150 MIL
0.393	0.621	0.843

### ElastoSpec Lite™ Semi-Elastomeric PLYWOOD SUBSTRUCTURE

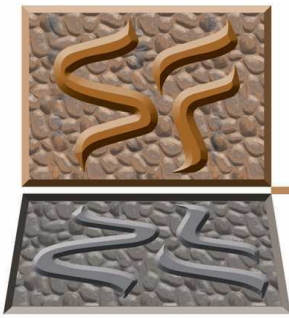
Property	ASTM	Rating
Shore D	D2240	65
Tensile	D412	3000 psi
Elongation	D412	300%
Tear Strength	D2370	23 MPa
<b>Material Weights - lbs/ft<sup>2</sup></b>		
Varies by Pattern		

### ElastoSpec™ 100% Solid Urethane BONDED TO 3/4" PLYWOOD

Property	ASTM	Rating
Shore A	D2240	50-55
Tensile	D638	800 psi
Elongation	D638	600%
Tear Strength	D624	200 pli
<b>Material Weights - lbs/ft<sup>2</sup></b>		
Varies by Pattern		

**ThermoSpec™ Standard Panel Sizes: 48" x 96" or 48" x 120" Custom Sizes and Art Panels available**

**ElastoSpec™ Customized Panel Sizes and Art Panels**

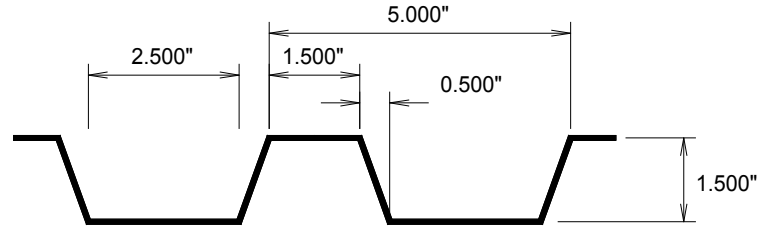


# Spec Formliners INCORPORATED

Pattern Number: **1720**

## Taft Flute

1-1/2" (38mm) depth  
5" (127mm) pattern repeat



**Note: Non-standard panel width of 45"**  
**May require backing**

### GENERAL INFORMATION

**ATTACHMENT TO FORMWORK** – Liners are attached to the form using TEK screws through the face of the liner spaced 12" C-C. Optional form mounting T-nuts embedded through the plywood backing is available for Elastospec panels.

**FORM RELEASE** – Apply with low flow, wide angle, flat spray nozzle and wipe with a cloth to insure a complete even coat to the entire form liner surface. Do not over apply form release agent. Protect treated form liners from precipitation, dust, and debris. Do not apply to reinforcing steel. Dayton Superior Liner Coat (J-4 LC) form release, or equal, is approved for all form liner materials.

**TECHNICAL SUPPORT** – Contact Spec Formliners, Inc. 888 429-9550

### ThermoSpec™ SINGLE OR MULTI-USE PLASTIC

Property	HIPS	ABS
Tensile D638	3700	5300
IFlexural D7905	-	9300
Hardness D786	-	105
<b>Material Weights - lbs/ft<sup>2</sup></b>		
0.070 MIL	0.110 MIL	0.150 MIL
0.393	0.621	0.843

### ElastoSpec Lite™ Semi-Elastomeric PLYWOOD SUBSTRUCTURE

Property	ASTM	Rating
Shore D	D2240	65
Tensile	D412	3000 psi
Elongation	D412	300%
Tear Strength	D2370	23 MPa
<b>Material Weights - lbs/ft<sup>2</sup></b>		
Varies by Pattern		

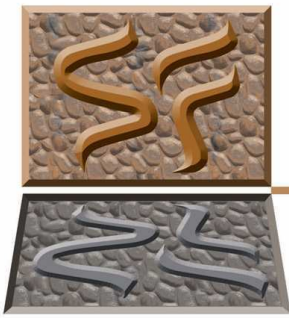
### ElastoSpec™ 100% Solid Urethane BONDED TO 3/4" PLYWOOD

Property	ASTM	Rating
Shore A	D2240	50-55
Tensile	D638	800 psi
Elongation	D638	600%
Tear Strength	D624	200 pli
<b>Material Weights - lbs/ft<sup>2</sup></b>		
Varies by Pattern		

**ThermoSpec™ Standard Panel Sizes: 48" x 96" or 48" x 120" Custom Sizes and Art Panels available**

**ElastoSpec™ Customized Panel Sizes and Art Panels**





# Spec Formliners

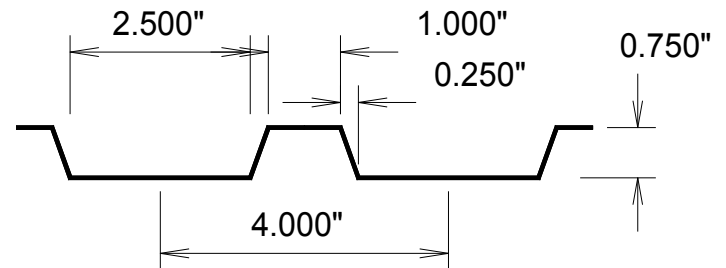
I N C O R P O R A T E D

Pattern Number: **1721**

## 307 Standard Spec Flute

3/4" (19mm) depth

4" (102mm) pattern repeat



### GENERAL INFORMATION

**ATTACHMENT TO FORMWORK** – Liners are attached to the form using TEK screws through the face of the liner spaced 12" C-C. Optional form mounting T-nuts embedded through the plywood backing is available for Elastospec panels.

**FORM RELEASE** – Apply with low flow, wide angle, flat spray nozzle and wipe with a cloth to insure a complete even coat to the entire form liner surface. Do not over apply form release agent. Protect treated form liners from precipitation, dust, and debris. Do not apply to reinforcing steel. Dayton Superior Liner Coat (J-4 LC) form release, or equal, is approved for all form liner materials.

**TECHNICAL SUPPORT** – Contact Spec Formliners, Inc. 888 429-9550

### ThermoSpec™ SINGLE OR MULTI-USE PLASTIC

Property	HIPS	ABS
Tensile D638	3700	5300
IFlexural D7905	-	9300
Hardness D786	-	105
<b>Material Weights - lbs/ft<sup>2</sup></b>		
0.070 MIL	0.110 MIL	0.150 MIL
0.393	0.621	0.843

### ElastoSpec Lite™ Semi-Elastomeric PLYWOOD SUBSTRUCTURE

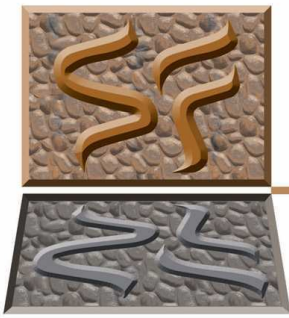
Property	ASTM	Rating
Shore D	D2240	65
Tensile	D412	3000 psi
Elongation	D412	300%
Tear Strength	D2370	23 MPa
<b>Material Weights - lbs/ft<sup>2</sup></b>		
Varies by Pattern		

### ElastoSpec™ 100% Solid Urethane BONDED TO 3/4" PLYWOOD

Property	ASTM	Rating
Shore A	D2240	50-55
Tensile	D638	800 psi
Elongation	D638	600%
Tear Strength	D624	200 pli
<b>Material Weights - lbs/ft<sup>2</sup></b>		
Varies by Pattern		

**ThermoSpec™ Standard Panel Sizes: 48" x 96" or 48" x 120" Custom Sizes and Art Panels available**

**ElastoSpec™ Customized Panel Sizes and Art Panels**



# Spec Formliners

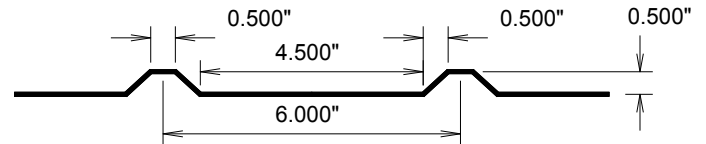
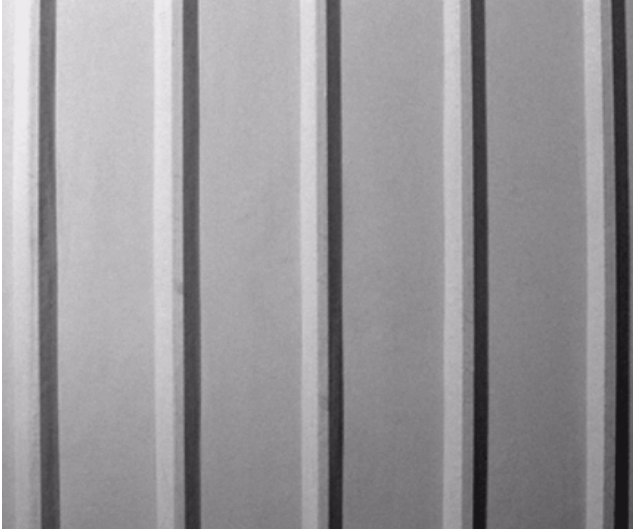
I N C O R P O R A T E D

Pattern Number: **1723**

## Wyoming Flute

1/2" (13mm) depth

6" (152mm) pattern repeat



### GENERAL INFORMATION

**ATTACHMENT TO FORMWORK** – Liners are attached to the form using TEK screws through the face of the liner spaced 12" C-C. Optional form mounting T-nuts embedded through the plywood backing is available for Elastospec panels.

**FORM RELEASE** – Apply with low flow, wide angle, flat spray nozzle and wipe with a cloth to insure a complete even coat to the entire form liner surface. Do not over apply form release agent. Protect treated form liners from precipitation, dust, and debris. Do not apply to reinforcing steel. Dayton Superior Liner Coat (J-4 LC) form release, or equal, is approved for all form liner materials.

**TECHNICAL SUPPORT** – Contact Spec Formliners, Inc. 888 429-9550

### ThermoSpec™ SINGLE OR MULTI-USE PLASTIC

Property	HIPS	ABS
Tensile D638	3700	5300
IFlexural D7905	-	9300
Hardness D786	-	105
<b>Material Weights - lbs/ft<sup>2</sup></b>		
0.070 MIL	0.110 MIL	0.150 MIL
0.393	0.621	0.843

### ElastoSpec Lite™ Semi-Elastomeric PLYWOOD SUBSTRUCTURE

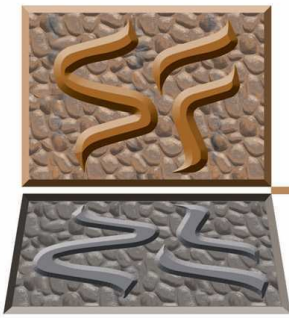
Property	ASTM	Rating
Shore D	D2240	65
Tensile	D412	3000 psi
Elongation	D412	300%
Tear Strength	D2370	23 MPa
<b>Material Weights - lbs/ft<sup>2</sup></b>		
Varies by Pattern		

### ElastoSpec™ 100% Solid Urethane BONDED TO 3/4" PLYWOOD

Property	ASTM	Rating
Shore A	D2240	50-55
Tensile	D638	800 psi
Elongation	D638	600%
Tear Strength	D624	200 pli
<b>Material Weights - lbs/ft<sup>2</sup></b>		
Varies by Pattern		

**ThermoSpec™ Standard Panel Sizes: 48" x 96" or 48" x 120" Custom Sizes and Art Panels available**

**ElastoSpec™ Customized Panel Sizes and Art Panels**



# Spec Formliners

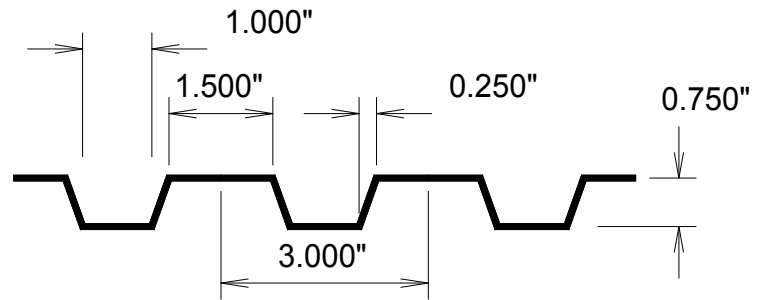
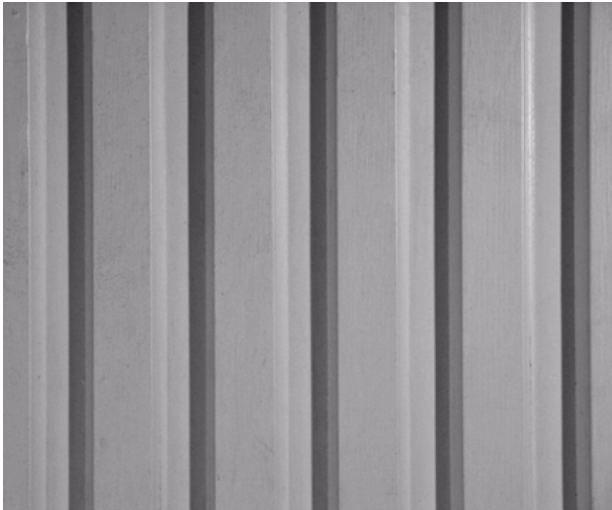
I N C O R P O R A T E D

Pattern Number: **1726**

## Orlando Flute

3/4" (19mm) depth

3" (76mm) pattern repeat



**Note: Requires backing**

### GENERAL INFORMATION

**ATTACHMENT TO FORMWORK** – Liners are attached to the form using TEK screws through the face of the liner spaced 12" C-C. Optional form mounting T-nuts embedded through the plywood backing is available for Elastospec panels.

**FORM RELEASE** – Apply with low flow, wide angle, flat spray nozzle and wipe with a cloth to insure a complete even coat to the entire form liner surface. Do not over apply form release agent. Protect treated form liners from precipitation, dust, and debris. Do not apply to reinforcing steel. Dayton Superior Liner Coat (J-4 LC) form release, or equal, is approved for all form liner materials.

**TECHNICAL SUPPORT** – Contact Spec Formliners, Inc. 888 429-9550

### ThermoSpec™ SINGLE OR MULTI-USE PLASTIC

Property	HIPS	ABS
Tensile D638	3700	5300
IFlexural D7905	-	9300
Hardness D786	-	105
<b>Material Weights - lbs/ft<sup>2</sup></b>		
0.070 MIL	0.110 MIL	0.150 MIL
0.393	0.621	0.843

### ElastoSpec Lite™ Semi-Elastomeric PLYWOOD SUBSTRUCTURE

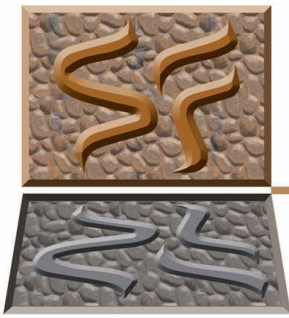
Property	ASTM	Rating
Shore D	D2240	65
Tensile	D412	3000 psi
Elongation	D412	300%
Tear Strength	D2370	23 MPa
<b>Material Weights - lbs/ft<sup>2</sup></b>		
Varies by Pattern		

### ElastoSpec™ 100% Solid Urethane BONDED TO 3/4" PLYWOOD

Property	ASTM	Rating
Shore A	D2240	50-55
Tensile	D638	800 psi
Elongation	D638	600%
Tear Strength	D624	200 pli
<b>Material Weights - lbs/ft<sup>2</sup></b>		
Varies by Pattern		

**ThermoSpec™ Standard Panel Sizes: 48" x 96" or 48" x 120" Custom Sizes and Art Panels available**

**ElastoSpec™ Customized Panel Sizes and Art Panels**



# Spec Formliners

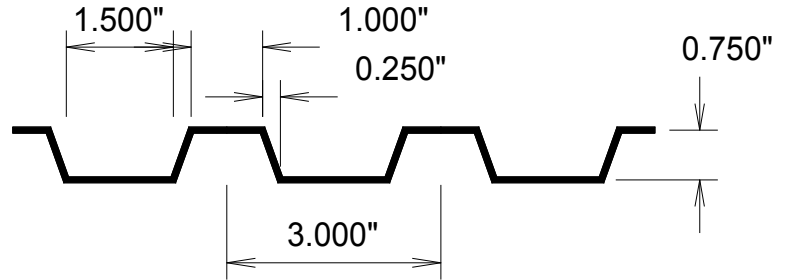
I N C O R P O R A T E D

Pattern Number: **1730**

## Colfax Flute

3/4" (19mm) depth

3" (76mm) pattern repeat



### GENERAL INFORMATION

**ATTACHMENT TO FORMWORK** – Liners are attached to the form using TEK screws through the face of the liner spaced 12" C-C. Optional form mounting T-nuts embedded through the plywood backing is available for Elastospec panels.

**FORM RELEASE** – Apply with low flow, wide angle, flat spray nozzle and wipe with a cloth to insure a complete even coat to the entire form liner surface. Do not over apply form release agent. Protect treated form liners from precipitation, dust, and debris. Do not apply to reinforcing steel. Dayton Superior Liner Coat (J-4 LC) form release, or equal, is approved for all form liner materials.

**TECHNICAL SUPPORT** – Contact Spec Formliners, Inc. 888 429-9550

### ThermoSpec™ SINGLE OR MULTI-USE PLASTIC

Property	HIPS	ABS
Tensile D638	3700	5300
IFlexural D7905	-	9300
Hardness D786	-	105
<b>Material Weights - lbs/ft<sup>2</sup></b>		
0.070 MIL	0.110 MIL	0.150 MIL
0.393	0.621	0.843

### ElastoSpec Lite™ Semi-Elastomeric PLYWOOD SUBSTRUCTURE

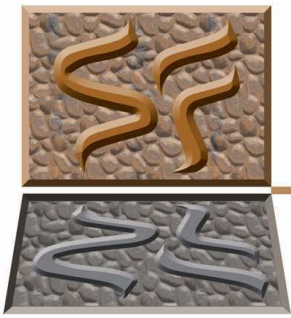
Property	ASTM	Rating
Shore D	D2240	65
Tensile	D412	3000 psi
Elongation	D412	300%
Tear Strength	D2370	23 MPa
<b>Material Weights - lbs/ft<sup>2</sup></b>		
Varies by Pattern		

### ElastoSpec™ 100% Solid Urethane BONDED TO 3/4" PLYWOOD

Property	ASTM	Rating
Shore A	D2240	50-55
Tensile	D638	800 psi
Elongation	D638	600%
Tear Strength	D624	200 pli
<b>Material Weights - lbs/ft<sup>2</sup></b>		
Varies by Pattern		

**ThermoSpec™ Standard Panel Sizes: 48" x 96" or 48" x 120" Custom Sizes and Art Panels available**

**ElastoSpec™ Customized Panel Sizes and Art Panels**



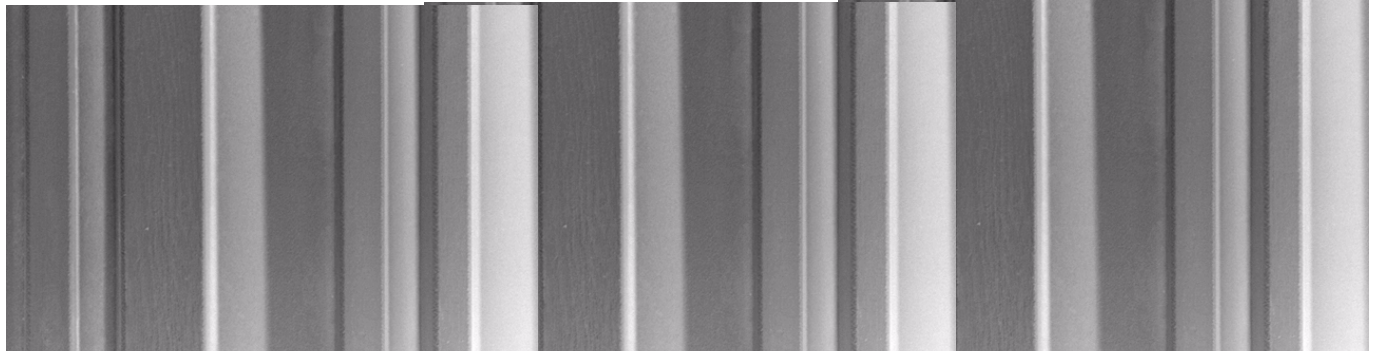
# Spec Formliners

I N C O R P O R A T E D

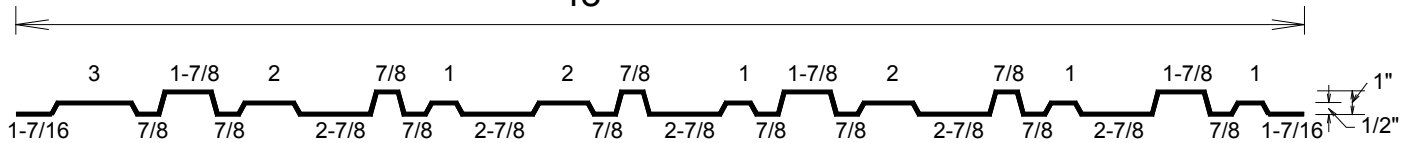
Pattern Number: **1732**

## Random Reveal

Random reveal widths from 1" to 3"  
1" max. relief - 48" pattern repeat



48"



### GENERAL INFORMATION

**ATTACHMENT TO FORMWORK** – Liners are attached to the form using TEK screws through the face of the liner spaced 12" C-C. Optional form mounting T-nuts embedded through the plywood backing is available for Elastospec panels.

**FORM RELEASE** – Apply with low flow, wide angle, flat spray nozzle and wipe with a cloth to insure a complete even coat to the entire form liner surface. Do not over apply form release agent. Protect treated form liners from precipitation, dust, and debris. Do not apply to reinforcing steel. Dayton Superior Liner Coat (J-4 LC) form release, or equal, is approved for all form liner materials.

**TECHNICAL SUPPORT** – Contact Spec Formliners, Inc. 888 429-9550

### ThermoSpec™ SINGLE OR MULTI-USE PLASTIC

Property	HIPS	ABS
Tensile D638	3700	5300
IFlexural D7905	-	9300
Hardness D786	-	105
<b>Material Weights - lbs/ft<sup>2</sup></b>		
0.070 MIL	0.110 MIL	0.150 MIL
0.393	0.621	0.843

### ElastoSpec Lite™ Semi-Elastomeric PLYWOOD SUBSTRUCTURE

Property	ASTM	Rating
Shore D	D2240	65
Tensile	D412	3000 psi
Elongation	D412	300%
Tear Strength	D2370	23 MPa
<b>Material Weights - lbs/ft<sup>2</sup></b>		
Varies by Pattern		

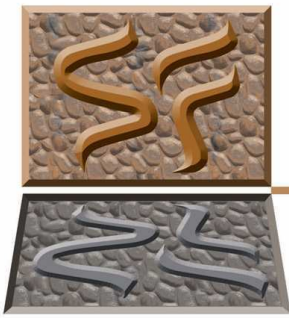
### ElastoSpec™ 100% Solid Urethane BONDED TO 3/4" PLYWOOD

Property	ASTM	Rating
Shore A	D2240	50-55
Tensile	D638	800 psi
Elongation	D638	600%
Tear Strength	D624	200 pli
<b>Material Weights - lbs/ft<sup>2</sup></b>		
Varies by Pattern		

ThermoSpec™ Standard Panel Sizes: 48" x 96" or 48" x 120" Custom Sizes and Art Panels available

ElastoSpec™ Customized Panel Sizes and Art Panels





# Spec Formliners

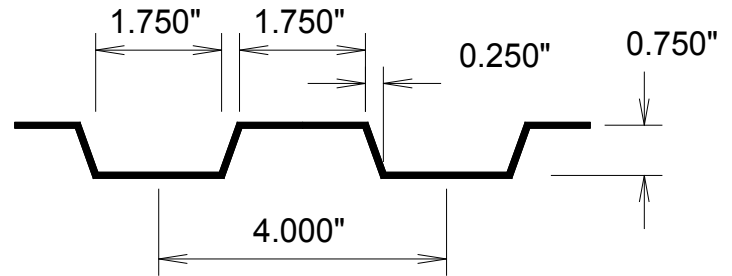
INCORPORATED

Pattern Number: **1734**

## Adrian Flute

3/4" (19mm) depth

4" (102mm) pattern repeat



**Note: Requires backing**

### GENERAL INFORMATION

**ATTACHMENT TO FORMWORK** – Liners are attached to the form using TEK screws through the face of the liner spaced 12" C-C. Optional form mounting T-nuts embedded through the plywood backing is available for Elastospec panels.

**FORM RELEASE** – Apply with low flow, wide angle, flat spray nozzle and wipe with a cloth to insure a complete even coat to the entire form liner surface. Do not over apply form release agent. Protect treated form liners from precipitation, dust, and debris. Do not apply to reinforcing steel. Dayton Superior Liner Coat (J-4 LC) form release, or equal, is approved for all form liner materials.

**TECHNICAL SUPPORT** – Contact Spec Formliners, Inc. 888 429-9550

### ThermoSpec™ SINGLE OR MULTI-USE PLASTIC

Property	HIPS	ABS
Tensile D638	3700	5300
IFlexural D7905	-	9300
Hardness D786	-	105
<b>Material Weights - lbs/ft<sup>2</sup></b>		
0.070 MIL	0.110 MIL	0.150 MIL
0.393	0.621	0.843

### ElastoSpec Lite™ Semi-Elastomeric PLYWOOD SUBSTRUCTURE

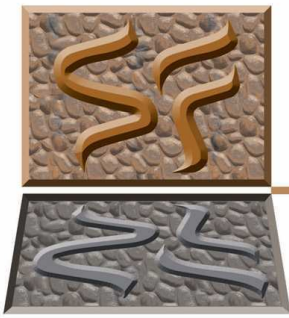
Property	ASTM	Rating
Shore D	D2240	65
Tensile	D412	3000 psi
Elongation	D412	300%
Tear Strength	D2370	23 MPa
<b>Material Weights - lbs/ft<sup>2</sup></b>		
Varies by Pattern		

### ElastoSpec™ 100% Solid Urethane BONDED TO 3/4" PLYWOOD

Property	ASTM	Rating
Shore A	D2240	50-55
Tensile	D638	800 psi
Elongation	D638	600%
Tear Strength	D624	200 pli
<b>Material Weights - lbs/ft<sup>2</sup></b>		
Varies by Pattern		

**ThermoSpec™ Standard Panel Sizes: 48" x 96" or 48" x 120" Custom Sizes and Art Panels available**

**ElastoSpec™ Customized Panel Sizes and Art Panels**



# Spec Formliners

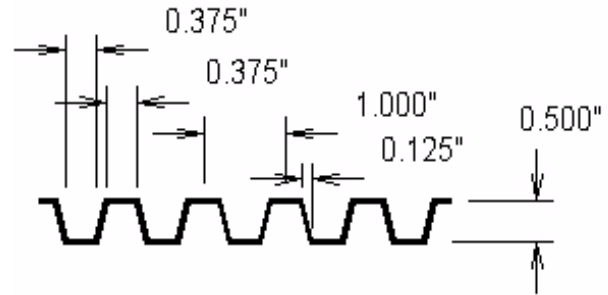
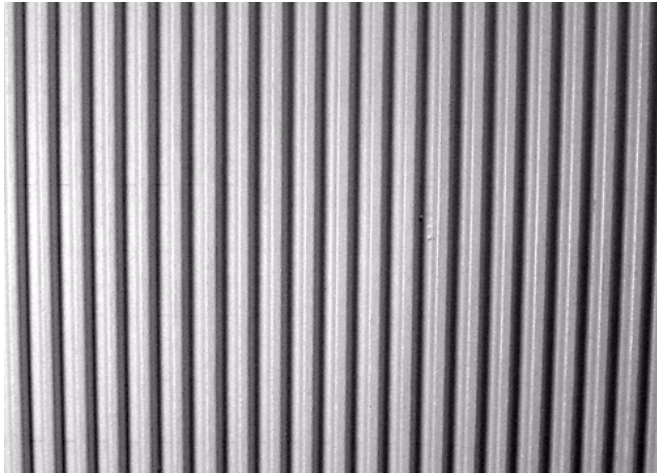
INCORPORATED

Pattern Number: **1738**

## 3/8" Flute

1/2" (13mm) depth

1" (25mm) pattern repeat



### GENERAL INFORMATION

**ATTACHMENT TO FORMWORK** – Liners are attached to the form using TEK screws through the face of the liner spaced 12" C-C. Optional form mounting T-nuts embedded through the plywood backing is available for Elastospec panels.

**FORM RELEASE** – Apply with low flow, wide angle, flat spray nozzle and wipe with a cloth to insure a complete even coat to the entire form liner surface. Do not over apply form release agent. Protect treated form liners from precipitation, dust, and debris. Do not apply to reinforcing steel. Dayton Superior Liner Coat (J-4 LC) form release, or equal, is approved for all form liner materials.

**TECHNICAL SUPPORT** – Contact Spec Formliners, Inc. 888 429-9550

### ThermoSpec™ SINGLE OR MULTI-USE PLASTIC

Property	HIPS	ABS
Tensile D638	3700	5300
IFlexural D7905	-	9300
Hardness D786	-	105
<b>Material Weights - lbs/ft<sup>2</sup></b>		
0.070 MIL	0.110 MIL	0.150 MIL
0.393	0.621	0.843

### ElastoSpec Lite™ Semi-Elastomeric PLYWOOD SUBSTRUCTURE

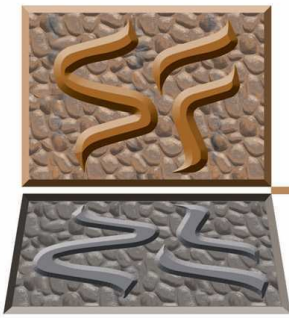
Property	ASTM	Rating
Shore D	D2240	65
Tensile	D412	3000 psi
Elongation	D412	300%
Tear Strength	D2370	23 MPa
<b>Material Weights - lbs/ft<sup>2</sup></b>		
Varies by Pattern		

### ElastoSpec™ 100% Solid Urethane BONDED TO 3/4" PLYWOOD

Property	ASTM	Rating
Shore A	D2240	50-55
Tensile	D638	800 psi
Elongation	D638	600%
Tear Strength	D624	200 pli
<b>Material Weights - lbs/ft<sup>2</sup></b>		
Varies by Pattern		

**ThermoSpec™ Standard Panel Sizes: 48" x 96" or 48" x 120" Custom Sizes and Art Panels available**

**ElastoSpec™ Customized Panel Sizes and Art Panels**



# Spec Formliners

I N C O R P O R A T E D

Pattern Number: **1739**

## Gila Flute

1-1/4" (32mm) depth

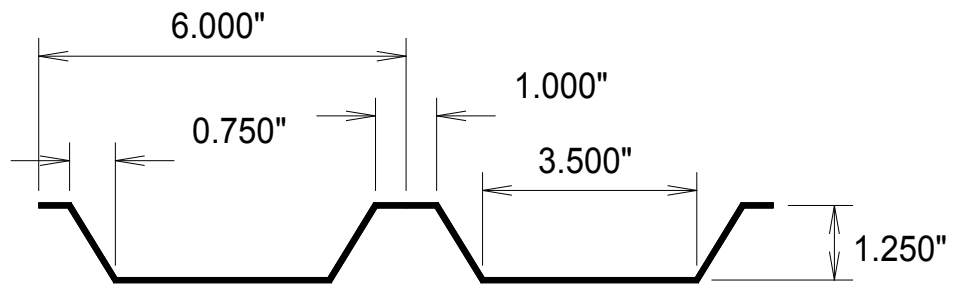
6" (152mm) pattern repeat

### GENERAL INFORMATION

**ATTACHMENT TO FORMWORK** – Liners are attached to the form using TEK screws through the face of the liner spaced 12" C-C. Optional form mounting T-nuts embedded through the plywood backing is available for Elastospec panels.

**FORM RELEASE** – Apply with low flow, wide angle, flat spray nozzle and wipe with a cloth to insure a complete even coat to the entire form liner surface. Do not over apply form release agent. Protect treated form liners from precipitation, dust, and debris. Do not apply to reinforcing steel. Dayton Superior Liner Coat (J-4 LC) form release or equal is approved for all form liner materials.

**TECHNICAL SUPPORT** – Contact Spec Formliners, Inc. 888 429-9550



**May require backing**

### ThermoSpec™ SINGLE OR MULTI-USE PLASTIC

Property	HIPS	ABS
Tensile D638	3700	5300
IFlexural D7905	-	9300
Hardness D786	-	105
<b>Material Weights - lbs/ft<sup>2</sup></b>		
0.070 MIL	0.110 MIL	0.150 MIL
0.393	0.621	0.843

### ElastoSpec Lite™ Semi-Elastomeric PLYWOOD SUBSTRUCTURE

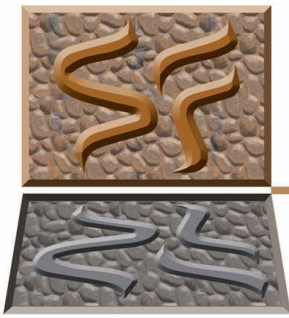
Property	ASTM	Rating
Shore D	D2240	65
Tensile	D412	3000 psi
Elongation	D412	300%
Tear Strength	D2370	23 MPa
<b>Material Weights - lbs/ft<sup>2</sup></b>		
Varies by Pattern		

### ElastoSpec™ 100% Solid Urethane BONDED TO 3/4" PLYWOOD

Property	ASTM	Rating
Shore A	D2240	50-55
Tensile	D638	800 psi
Elongation	D638	600%
Tear Strength	D624	200 pli
<b>Material Weights - lbs/ft<sup>2</sup></b>		
Varies by Pattern		

**ThermoSpec™ Standard Panel Sizes: 48" x 96" or 48" x 120" Custom Sizes and Art Panels available**

**ElastoSpec™ Customized Panel Sizes and Art Panels**



# Spec Formliners

I N C O R P O R A T E D

Pattern Number: **1741**

## Perris Flute

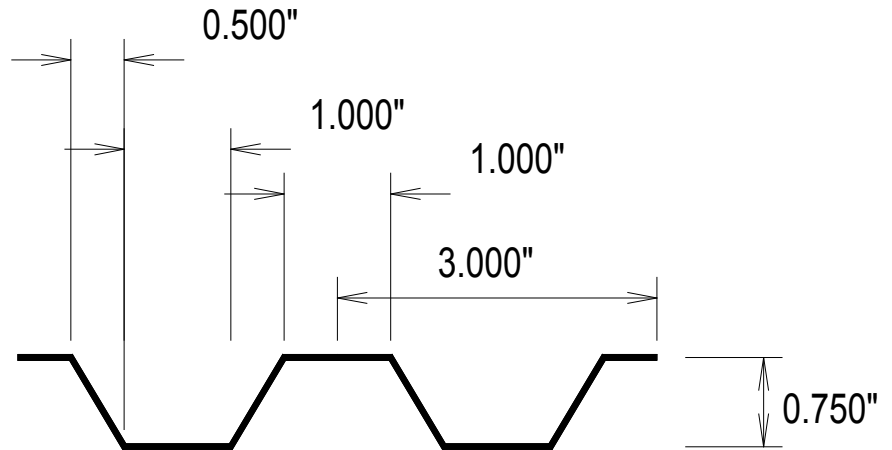
3/4" (19mm) depth  
3" (102mm) pattern repeat

### GENERAL INFORMATION

**ATTACHMENT TO FORMWORK** – Liners are attached to the form using TEK screws through the face of the liner spaced 12" C-C. Optional form mounting T-nuts embedded through the plywood backing is available for Elastospec panels.

**FORM RELEASE** – Apply with low flow, wide angle, flat spray nozzle and wipe with a cloth to insure a complete even coat to the entire form liner surface. Do not over apply form release agent. Protect treated form liners from precipitation, dust, and debris. Do not apply to reinforcing steel. Dayton Superior Liner Coat (J-4 LC) form release or equal is approved for all form liner materials.

**TECHNICAL SUPPORT** – Contact Spec Formliners, Inc. 888 429-9550



Note: May Require backing

### ThermoSpec™ SINGLE OR MULTI-USE PLASTIC

Property	HIPS	ABS
Tensile D638	3700	5300
IFlexural D7905	-	9300
Hardness D786	-	105
<b>Material Weights - lbs/ft<sup>2</sup></b>		
0.070 MIL	0.110 MIL	0.150 MIL
0.393	0.621	0.843

### ElastoSpec Lite™ Semi-Elastomeric PLYWOOD SUBSTRUCTURE

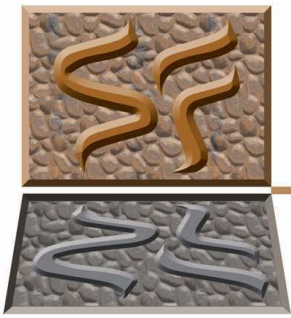
Property	ASTM	Rating
Shore D	D2240	65
Tensile	D412	3000 psi
Elongation	D412	300%
Tear Strength	D2370	23 MPa
<b>Material Weights - lbs/ft<sup>2</sup></b>		
Varies by Pattern		

### ElastoSpec™ 100% Solid Urethane BONDED TO 3/4" PLYWOOD

Property	ASTM	Rating
Shore A	D2240	50-55
Tensile	D638	800 psi
Elongation	D638	600%
Tear Strength	D624	200 pli
<b>Material Weights - lbs/ft<sup>2</sup></b>		
Varies by Pattern		

ThermoSpec™ Standard Panel Sizes: 48" x 96" or 48" x 120" Custom Sizes and Art Panels available

ElastoSpec™ Customized Panel Sizes and Art Panels



# Spec Formliners

I N C O R P O R A T E D

Pattern Number: **1751**

## MTU Flute

1" (25mm) depth

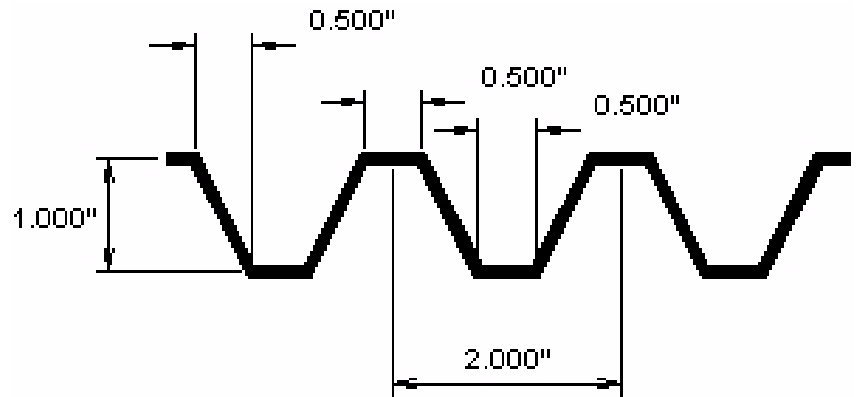
2" (51mm) pattern repeat

### GENERAL INFORMATION

**ATTACHMENT TO FORMWORK** – Liners are attached to the form using TEK screws through the face of the liner spaced 12" C-C. Optional form mounting T-nuts embedded through the plywood backing is available for Elastospec panels.

**FORM RELEASE** – Apply with low flow, wide angle, flat spray nozzle and wipe with a cloth to insure a complete even coat to the entire form liner surface. Do not over apply form release agent. Protect treated form liners from precipitation, dust, and debris. Do not apply to reinforcing steel. Dayton Superior Liner Coat (J-4 LC) form release or equal is approved for all form liner materials.

**TECHNICAL SUPPORT** – Contact Spec Formliners, Inc. 888 429-9550



### ThermoSpec™ SINGLE OR MULTI-USE PLASTIC

Property	HIPS	ABS
Tensile D638	3700	5300
IFlexural D7905	-	9300
Hardness D786	-	105
<b>Material Weights - lbs/ft<sup>2</sup></b>		
0.070 MIL	0.110 MIL	0.150 MIL
0.393	0.621	0.843

### ElastoSpec Lite™ Semi-Elastomeric PLYWOOD SUBSTRUCTURE

Property	ASTM	Rating
Shore D	D2240	65
Tensile	D412	3000 psi
Elongation	D412	300%
Tear Strength	D2370	23 MPa
<b>Material Weights - lbs/ft<sup>2</sup></b>		
Varies by Pattern		

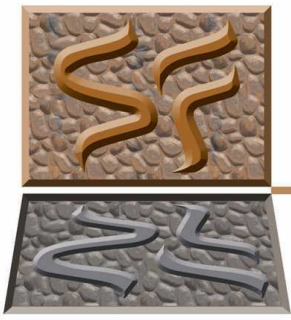
### ElastoSpec™ 100% Solid Urethane BONDED TO 3/4" PLYWOOD

Property	ASTM	Rating
Shore A	D2240	50-55
Tensile	D638	800 psi
Elongation	D638	600%
Tear Strength	D624	200 pli
<b>Material Weights - lbs/ft<sup>2</sup></b>		
Varies by Pattern		

**ThermoSpec™ Standard Panel Sizes: 48" x 96" or 48" x 120" Custom Sizes and Art Panels available**

**ElastoSpec™ Customized Panel Sizes and Art Panels**



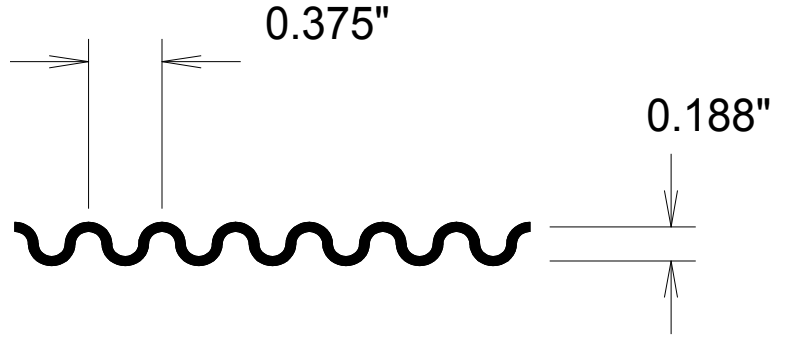
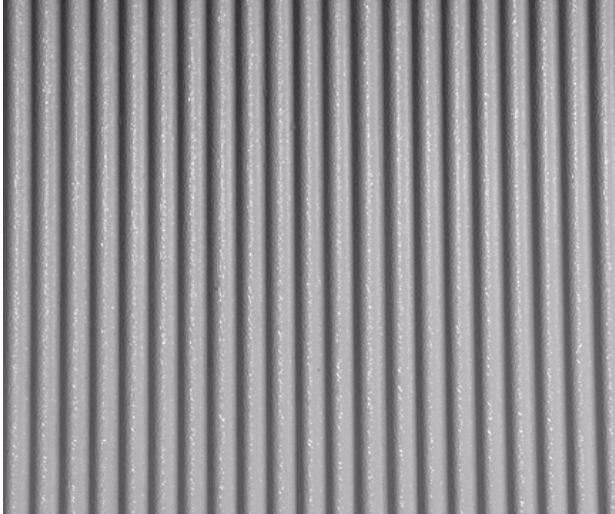


**Spec Formliners**  
INCORPORATED

Pattern Number: **1752**

**Long Ripple Rib Flute**

3/8" (10mm) sine wave  
3/16" (5mm) depth



**GENERAL INFORMATION**

**ATTACHMENT TO FORMWORK** – Liners are attached to the form using TEK screws through the face of the liner spaced 12" C-C. Optional form mounting T-nuts embedded through the plywood backing is available for Elastospec panels.

**FORM RELEASE** – Apply with low flow, wide angle, flat spray nozzle and wipe with a cloth to insure a complete even coat to the entire form liner surface. Do not over apply form release agent. Protect treated form liners from precipitation, dust, and debris. Do not apply to reinforcing steel. Dayton Superior Liner Coat (J-4 LC) form release, or equal, is approved for all form liner materials.

**TECHNICAL SUPPORT** – Contact Spec Formliners, Inc. 888 429-9550

**ThermoSpec™**  
SINGLE OR MULTI-USE PLASTIC

Property	HIPS	ABS
Tensile D638	3700	5300
IFlexural D7905	-	9300
Hardness D786	-	105
<b>Material Weights - lbs/ft<sup>2</sup></b>		
0.070 MIL	0.110 MIL	0.150 MIL
0.393	0.621	0.843

**ElastoSpec Lite™** Semi-Elastomeric  
PLYWOOD SUBSTRUCTURE

Property	ASTM	Rating
Shore D	D2240	65
Tensile	D412	3000 psi
Elongation	D412	300%
Tear Strength	D2370	23 MPa
<b>Material Weights - lbs/ft<sup>2</sup></b>		
Varies by Pattern		

**ElastoSpec™** 100% Solid Urethane  
BONDED TO 3/4" PLYWOOD

Property	ASTM	Rating
Shore A	D2240	50-55
Tensile	D638	800 psi
Elongation	D638	600%
Tear Strength	D624	200 pli
<b>Material Weights - lbs/ft<sup>2</sup></b>		
Varies by Pattern		

**ThermoSpec™ Standard Panel Sizes: 48" x 96" or 48" x 120" Custom Sizes and Art Panels available**

**ElastoSpec™ Customized Panel Sizes and Art Panels**



# Spec Formliners

I N C O R P O R A T E D

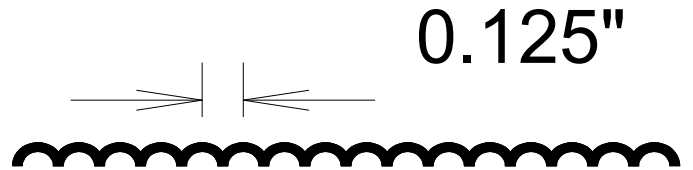
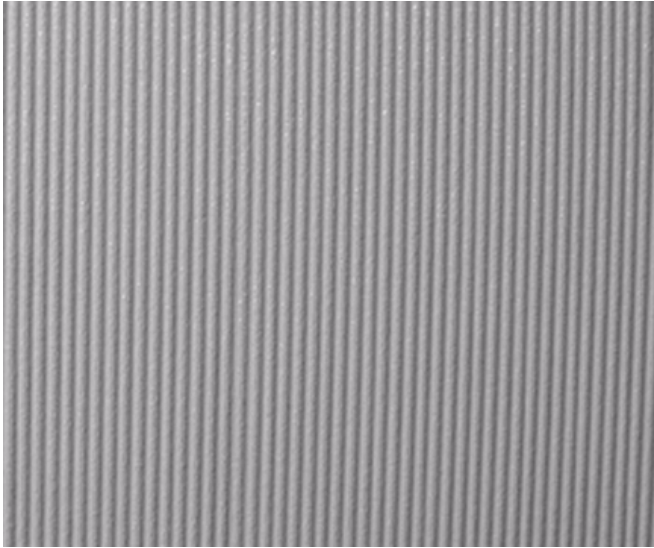


Pattern Number: **1753**

## Narrow Rippled Rib

1/16" (1.5mm) ribs - 1/6" depth

1/8" (3mm) pattern repeat



### GENERAL INFORMATION

**ATTACHMENT TO FORMWORK** – Liners are attached to the form using TEK screws through the face of the liner spaced 12" C-C. Optional form mounting T-nuts embedded through the plywood backing is available for Elastospec panels.

**FORM RELEASE** – Apply with low flow, wide angle, flat spray nozzle and wipe with a cloth to insure a complete even coat to the entire form liner surface. Do not over apply form release agent. Protect treated form liners from precipitation, dust, and debris. Do not apply to reinforcing steel. Dayton Superior Liner Coat (J-4 LC) form release, or equal, is approved for all form liner materials.

**TECHNICAL SUPPORT** – Contact Spec Formliners, Inc. 888 429-9550

### ThermoSpec™ SINGLE OR MULTI-USE PLASTIC

Property	HIPS	ABS
Tensile D638	3700	5300
IFlexural D7905	-	9300
Hardness D786	-	105
<b>Material Weights - lbs/ft<sup>2</sup></b>		
0.070 MIL	0.110 MIL	0.150 MIL
0.393	0.621	0.843

### ElastoSpec Lite™ Semi-Elastomeric PLYWOOD SUBSTRUCTURE

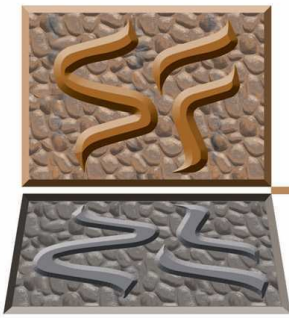
Property	ASTM	Rating
Shore D	D2240	65
Tensile	D412	3000 psi
Elongation	D412	300%
Tear Strength	D2370	23 MPa
<b>Material Weights - lbs/ft<sup>2</sup></b>		
Varies by Pattern		

### ElastoSpec™ 100% Solid Urethane BONDED TO 3/4" PLYWOOD

Property	ASTM	Rating
Shore A	D2240	50-55
Tensile	D638	800 psi
Elongation	D638	600%
Tear Strength	D624	200 pli
<b>Material Weights - lbs/ft<sup>2</sup></b>		
Varies by Pattern		

**ThermoSpec™ Standard Panel Sizes: 48" x 96" or 48" x 120" Custom Sizes and Art Panels available**

**ElastoSpec™ Customized Panel Sizes and Art Panels**



# Spec Formliners

I N C O R P O R A T E D

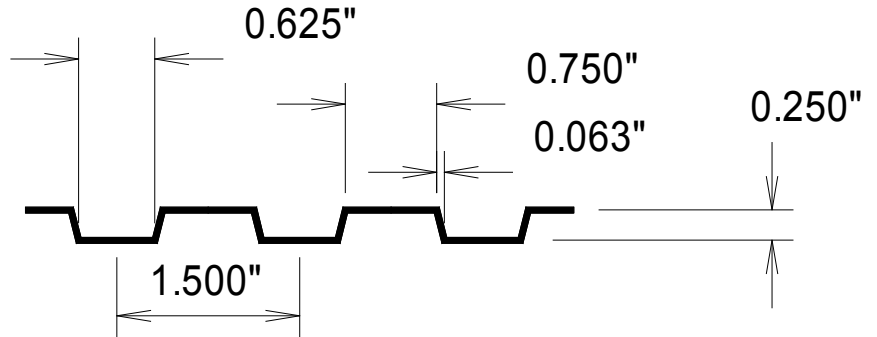
Pattern Number: **1760**

## Maui Flute

1/4" (7mm) depth

1-1/2" (38mm) pattern repeat

Photo  
Available  
Soon



### GENERAL INFORMATION

**ATTACHMENT TO FORMWORK** – Liners are attached to the form using TEK screws through the face of the liner spaced 12" C-C. Optional form mounting T-nuts embedded through the plywood backing is available for Elastospec panels.

**FORM RELEASE** – Apply with low flow, wide angle, flat spray nozzle and wipe with a cloth to insure a complete even coat to the entire form liner surface. Do not over apply form release agent. Protect treated form liners from precipitation, dust, and debris. Do not apply to reinforcing steel. Dayton Superior Liner Coat (J-4 LC) form release, or equal, is approved for all form liner materials.

**TECHNICAL SUPPORT** – Contact Spec Formliners, Inc. 888 429-9550

### ThermoSpec™ SINGLE OR MULTI-USE PLASTIC

Property	HIPS	ABS
Tensile D638	3700	5300
IFlexural D7905	-	9300
Hardness D786	-	105
<b>Material Weights - lbs/ft<sup>2</sup></b>		
0.070 MIL	0.110 MIL	0.150 MIL
0.393	0.621	0.843

### ElastoSpec Lite™ Semi-Elastomeric PLYWOOD SUBSTRUCTURE

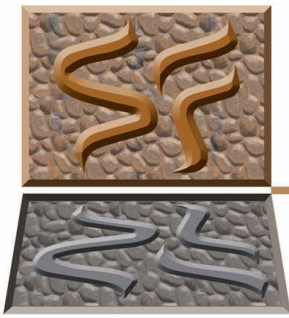
Property	ASTM	Rating
Shore D	D2240	65
Tensile	D412	3000 psi
Elongation	D412	300%
Tear Strength	D2370	23 MPa
<b>Material Weights - lbs/ft<sup>2</sup></b>		
Varies by Pattern		

### ElastoSpec™ 100% Solid Urethane BONDED TO 3/4" PLYWOOD

Property	ASTM	Rating
Shore A	D2240	50-55
Tensile	D638	800 psi
Elongation	D638	600%
Tear Strength	D624	200 pli
<b>Material Weights - lbs/ft<sup>2</sup></b>		
Varies by Pattern		

**ThermoSpec™ Standard Panel Sizes: 48" x 96" or 48" x 120" Custom Sizes and Art Panels available**

**ElastoSpec™ Customized Panel Sizes and Art Panels**



# Spec Formliners

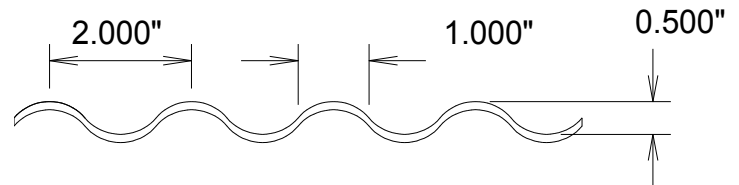
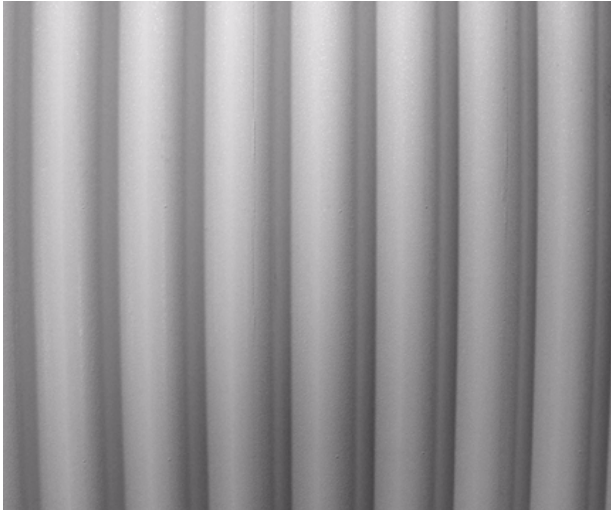
INCORPORATED

Pattern Number: **1761**

## 1" Sine Wave

1/2" (13mm) depth

2" (51mm) pattern repeat



### GENERAL INFORMATION

**ATTACHMENT TO FORMWORK** – Liners are attached to the form using TEK screws through the face of the liner spaced 12" C-C. Optional form mounting T-nuts embedded through the plywood backing is available for Elastospec panels.

**FORM RELEASE** – Apply with low flow, wide angle, flat spray nozzle and wipe with a cloth to insure a complete even coat to the entire form liner surface. Do not over apply form release agent. Protect treated form liners from precipitation, dust, and debris. Do not apply to reinforcing steel. Dayton Superior Liner Coat (J-4 LC) form release, or equal, is approved for all form liner materials.

**TECHNICAL SUPPORT** – Contact Spec Formliners, Inc. 888 429-9550

### ThermoSpec™ SINGLE OR MULTI-USE PLASTIC

Property	HIPS	ABS
Tensile D638	3700	5300
IFlexural D7905	-	9300
Hardness D786	-	105
<b>Material Weights - lbs/ft<sup>2</sup></b>		
0.070 MIL	0.110 MIL	0.150 MIL
0.393	0.621	0.843

### ElastoSpec Lite™ Semi-Elastomeric PLYWOOD SUBSTRUCTURE

Property	ASTM	Rating
Shore D	D2240	65
Tensile	D412	3000 psi
Elongation	D412	300%
Tear Strength	D2370	23 MPa
<b>Material Weights - lbs/ft<sup>2</sup></b>		
Varies by Pattern		

### ElastoSpec™ 100% Solid Urethane BONDED TO 3/4" PLYWOOD

Property	ASTM	Rating
Shore A	D2240	50-55
Tensile	D638	800 psi
Elongation	D638	600%
Tear Strength	D624	200 pli
<b>Material Weights - lbs/ft<sup>2</sup></b>		
Varies by Pattern		

**ThermoSpec™ Standard Panel Sizes: 48" x 96" or 48" x 120" Custom Sizes and Art Panels available**

**ElastoSpec™ Customized Panel Sizes and Art Panels**



# Spec Formliners

I N C O R P O R A T E D

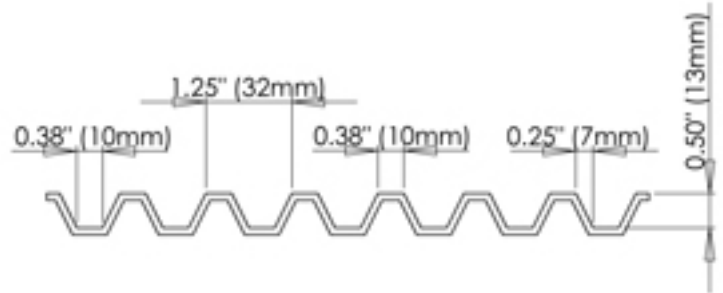
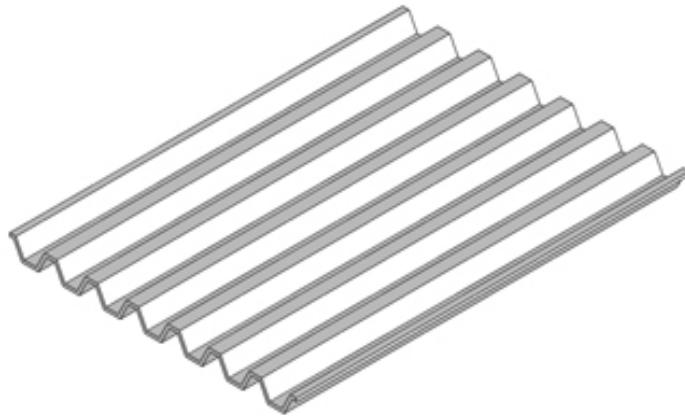


Pattern Number: **1765**

## Franklin Flute

1/2" (13mm) depth

1-1/4" (32mm) pattern repeat



### GENERAL INFORMATION

**ATTACHMENT TO FORMWORK** – Liners are attached to the form using TEK screws through the face of the liner spaced 12" C-C. Optional form mounting T-nuts embedded through the plywood backing is available for Elastospec panels.

**FORM RELEASE** – Apply with low flow, wide angle, flat spray nozzle and wipe with a cloth to insure a complete even coat to the entire form liner surface. Do not over apply form release agent. Protect treated form liners from precipitation, dust, and debris. Do not apply to reinforcing steel. Dayton Superior Liner Coat (J-4 LC) form release, or equal, is approved for all form liner materials.

**TECHNICAL SUPPORT** – Contact Spec Formliners, Inc. 888 429-9550

### ThermoSpec™ SINGLE OR MULTI-USE PLASTIC

Property	HIPS	ABS
Tensile D638	3700	5300
IFlexural D7905	-	9300
Hardness D786	-	105
<b>Material Weights - lbs/ft<sup>2</sup></b>		
0.070 MIL	0.110 MIL	0.150 MIL
0.393	0.621	0.843

### ElastoSpec Lite™ Semi-Elastomeric PLYWOOD SUBSTRUCTURE

Property	ASTM	Rating
Shore D	D2240	65
Tensile	D412	3000 psi
Elongation	D412	300%
Tear Strength	D2370	23 MPa
<b>Material Weights - lbs/ft<sup>2</sup></b>		
Varies by Pattern		

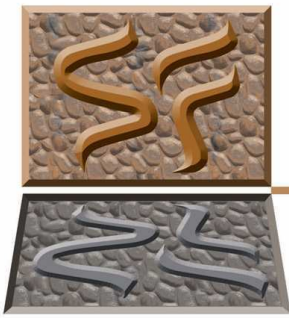
### ElastoSpec™ 100% Solid Urethane BONDED TO 3/4" PLYWOOD

Property	ASTM	Rating
Shore A	D2240	50-55
Tensile	D638	800 psi
Elongation	D638	600%
Tear Strength	D624	200 pli
<b>Material Weights - lbs/ft<sup>2</sup></b>		
Varies by Pattern		

**ThermoSpec™ Standard Panel Sizes: 48" x 96" or 48" x 120" Custom Sizes and Art Panels available**

**ElastoSpec™ Customized Panel Sizes and Art Panels**





# Spec Formliners

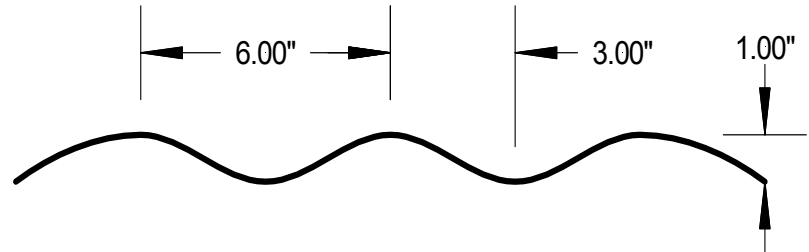
I N C O R P O R A T E D

Pattern Number: **1766**

## 6" Sine Wave

6" inch C-C, 1" depth

Photo  
Available  
Soon



### GENERAL INFORMATION

**ATTACHMENT TO FORMWORK** – Liners are attached to the form using TEK screws through the face of the liner spaced 12" C-C. Optional form mounting T-nuts embedded through the plywood backing is available for Elastospec panels.

**FORM RELEASE** – Apply with low flow, wide angle, flat spray nozzle and wipe with a cloth to insure a complete even coat to the entire form liner surface. Do not over apply form release agent. Protect treated form liners from precipitation, dust, and debris. Do not apply to reinforcing steel. Dayton Superior Liner Coat (J-4 LC) form release, or equal, is approved for all form liner materials.

**TECHNICAL SUPPORT** – Contact Spec Formliners, Inc. 888 429-9550

### ThermoSpec™ SINGLE OR MULTI-USE PLASTIC

Property	HIPS	ABS
Tensile D638	3700	5300
IFlexural D7905	-	9300
Hardness D786	-	105
<b>Material Weights - lbs/ft<sup>2</sup></b>		
0.070 MIL	0.110 MIL	0.150 MIL
0.393	0.621	0.843

### ElastoSpec Lite™ Semi-Elastomeric PLYWOOD SUBSTRUCTURE

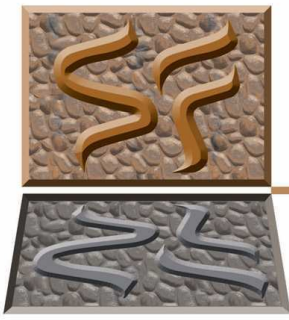
Property	ASTM	Rating
Shore D	D2240	65
Tensile	D412	3000 psi
Elongation	D412	300%
Tear Strength	D2370	23 MPa
<b>Material Weights - lbs/ft<sup>2</sup></b>		
Varies by Pattern		

### ElastoSpec™ 100% Solid Urethane BONDED TO 3/4" PLYWOOD

Property	ASTM	Rating
Shore A	D2240	50-55
Tensile	D638	800 psi
Elongation	D638	600%
Tear Strength	D624	200 pli
<b>Material Weights - lbs/ft<sup>2</sup></b>		
Varies by Pattern		

**ThermoSpec™ Standard Panel Sizes: 48" x 96" or 48" x 120" Custom Sizes and Art Panels available**

**ElastoSpec™ Customized Panel Sizes and Art Panels**



# Spec Formliners

I N C O R P O R A T E D

Pattern Number: **1784**

## Pinnacle Flute

1" (25mm) depth

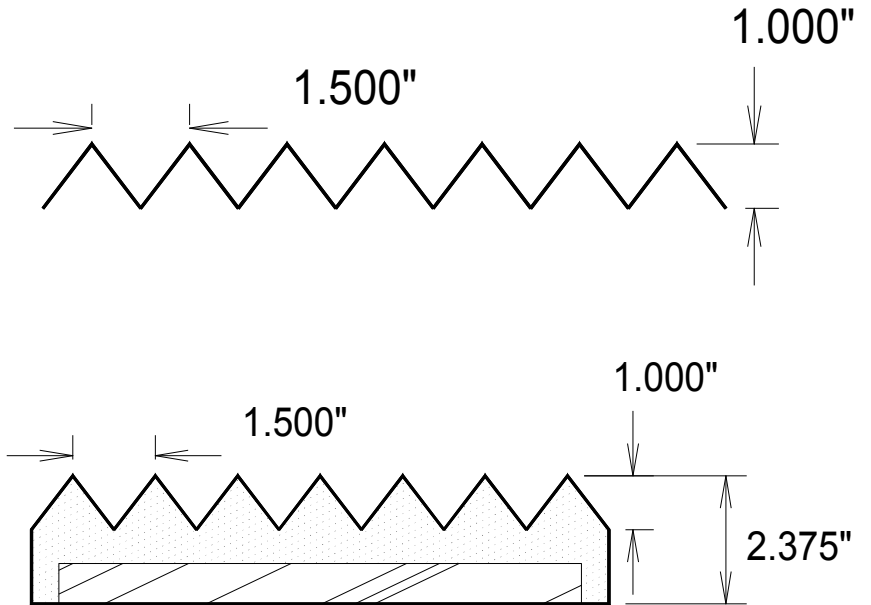
1-1/2" (38mm) pattern repeat

### GENERAL INFORMATION

**ATTACHMENT TO FORMWORK** – Liners are attached to the form using TEK screws through the face of the liner spaced 12" C-C. Optional form mounting T-nuts embedded through the plywood backing is available for Elastospec panels.

**FORM RELEASE** – Apply with low flow, wide angle, flat spray nozzle and wipe with a cloth to insure a complete even coat to the entire form liner surface. Do not over apply form release agent. Protect treated form liners from precipitation, dust, and debris. Do not apply to reinforcing steel. Dayton Superior Liner Coat (J-4 LC) form release or equal is approved for all form liner materials.

**TECHNICAL SUPPORT** – Contact Spec Formliners, Inc. 888 429-9550



### ThermoSpec™ SINGLE OR MULTI-USE PLASTIC

Property	HIPS	ABS
Tensile D638	3700	5300
IFlexural D7905	-	9300
Hardness D786	-	105
<b>Material Weights - lbs/ft<sup>2</sup></b>		
0.070 MIL	0.110 MIL	0.150 MIL
0.393	0.621	0.843

### ElastoSpec Lite™ Semi-Elastomeric PLYWOOD SUBSTRUCTURE

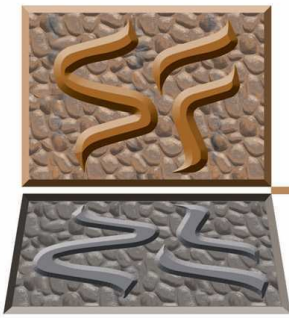
Property	ASTM	Rating
Shore D	D2240	65
Tensile	D412	3000 psi
Elongation	D412	300%
Tear Strength	D2370	23 MPa
<b>Material Weights - lbs/ft<sup>2</sup></b>		
Varies by Pattern		

### ElastoSpec™ 100% Solid Urethane BONDED TO 3/4" PLYWOOD

Property	ASTM	Rating
Shore A	D2240	50-55
Tensile	D638	800 psi
Elongation	D638	600%
Tear Strength	D624	200 pli
<b>Material Weights - lbs/ft<sup>2</sup></b>		
Varies by Pattern		

**ThermoSpec™ Standard Panel Sizes: 48" x 96" or 48" x 120" Custom Sizes and Art Panels available**

**ElastoSpec™ Customized Panel Sizes and Art Panels**



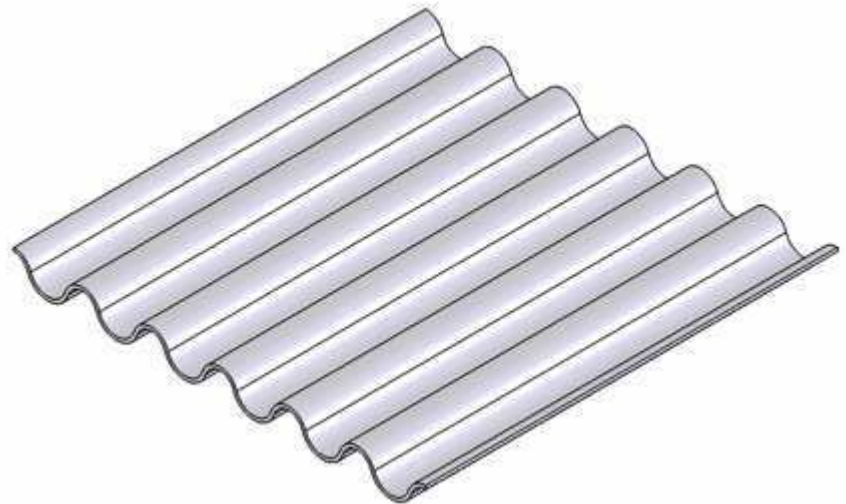
# Spec Formliners

I N C O R P O R A T E D

Pattern Number: **1786**

## 3/4" Sine Wave

3/4" (19mm) depth  
2" (50mm) pattern repeat



### GENERAL INFORMATION

**ATTACHMENT TO FORMWORK** – Liners are attached to the form using TEK screws through the face of the liner spaced 12" C-C. Optional form mounting T-nuts embedded through the plywood backing is available for Elastospec panels.

**FORM RELEASE** – Apply with low flow, wide angle, flat spray nozzle and wipe with a cloth to insure a complete even coat to the entire form liner surface. Do not over apply form release agent. Protect treated form liners from precipitation, dust, and debris. Do not apply to reinforcing steel. Dayton Superior Liner Coat (J-4 LC) form release or equal is approved for all form liner materials.

**TECHNICAL SUPPORT** – Contact Spec Formliners, Inc. 888 429-9550

### ThermoSpec™ SINGLE OR MULTI-USE PLASTIC

Property	HIPS	ABS
Tensile D638	3700	5300
IFlexural D7905	-	9300
Hardness D786	-	105
<b>Material Weights - lbs/ft<sup>2</sup></b>		
0.070 MIL	0.110 MIL	0.150 MIL
0.393	0.621	0.843

### ElastoSpec Lite™ Semi-Elastomeric PLYWOOD SUBSTRUCTURE

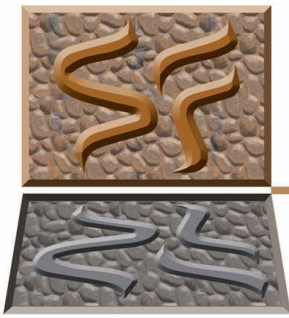
Property	ASTM	Rating
Shore D	D2240	65
Tensile	D412	3000 psi
Elongation	D412	300%
Tear Strength	D2370	23 MPa
<b>Material Weights - lbs/ft<sup>2</sup></b>		
Varies by Pattern		

### ElastoSpec™ 100% Solid Urethane BONDED TO 3/4" PLYWOOD

Property	ASTM	Rating
Shore A	D2240	50-55
Tensile	D638	800 psi
Elongation	D638	600%
Tear Strength	D624	200 pli
<b>Material Weights - lbs/ft<sup>2</sup></b>		
Varies by Pattern		

ThermoSpec™ Standard Panel Sizes: 48" x 96" or 48" x 120" Custom Sizes and Art Panels available

ElastoSpec™ Customized Panel Sizes and Art Panels



# Spec Formliners

I N C O R P O R A T E D

Pattern Number: **1789**

## WTP Flute

1-1/2" (38mm) depth

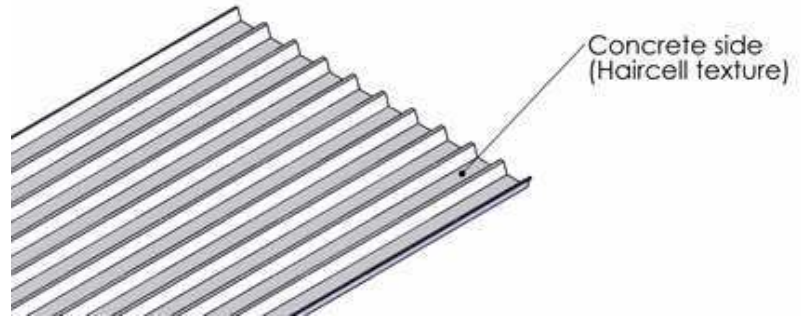
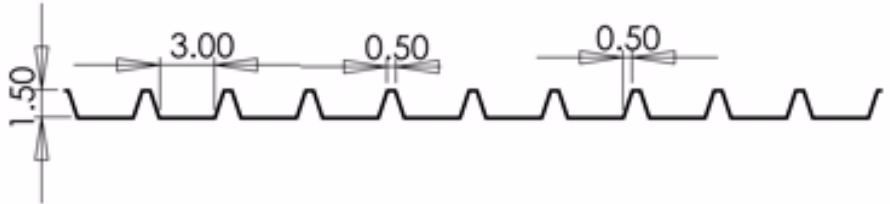
4-1/2" (114mm) pattern repeat

### GENERAL INFORMATION

**ATTACHMENT TO FORMWORK** – Liners are attached to the form using TEK screws through the face of the liner spaced 12" C-C. Optional form mounting T-nuts embedded through the plywood backing is available for Elastospec panels.

**FORM RELEASE** – Apply with low flow, wide angle, flat spray nozzle and wipe with a cloth to insure a complete even coat to the entire form liner surface. Do not over apply form release agent. Protect treated form liners from precipitation, dust, and debris. Do not apply to reinforcing steel. Dayton Superior Liner Coat (J-4 LC) form release or equal is approved for all form liner materials.

**TECHNICAL SUPPORT** – Contact Spec Formliners, Inc. 888 429-9550



### ThermoSpec™ SINGLE OR MULTI-USE PLASTIC

Property	HIPS	ABS
Tensile D638	3700	5300
IFlexural D7905	-	9300
Hardness D786	-	105
<b>Material Weights - lbs/ft<sup>2</sup></b>		
0.070 MIL	0.110 MIL	0.150 MIL
0.393	0.621	0.843

### ElastoSpec Lite™ Semi-Elastomeric PLYWOOD SUBSTRUCTURE

Property	ASTM	Rating
Shore D	D2240	65
Tensile	D412	3000 psi
Elongation	D412	300%
Tear Strength	D2370	23 MPa
<b>Material Weights - lbs/ft<sup>2</sup></b>		
Varies by Pattern		

### ElastoSpec™ 100% Solid Urethane BONDED TO 3/4" PLYWOOD

Property	ASTM	Rating
Shore A	D2240	50-55
Tensile	D638	800 psi
Elongation	D638	600%
Tear Strength	D624	200 pli
<b>Material Weights - lbs/ft<sup>2</sup></b>		
Varies by Pattern		

ThermoSpec™ Standard Panel Sizes: 48" x 96" or 48" x 120" Custom Sizes and Art Panels available

ElastoSpec™ Customized Panel Sizes and Art Panels