



1. Product Name

- SPEC MIX® Adhered Veneer Mortar
URL: [Adhered Veneer Mortar](#)
- SPEC MIX Polymer Modified Adhered Veneer Mortar (PMAVM)
URL: [Polymer Modified Adhered Veneer Mortar](#)
- SPEC MIX Colored Mortar
URL: [Colored Mortar](#)
Videos: [SPEC MIX Masonry Solutions](#)

2. Manufacturer

SPEC MIX, Inc.
1230 Eagan Industrial Road, Suite 160
Eagan, MN 55121
Phone: (888) 773-2649
(651) 994-7120
Fax: (651) 454-5315
E-mail: info@specmix.com
Web: www.specmix.com

3. Product Description

Basic Use

[SPEC MIX Adhered Veneer Mortar](#)

SPEC MIX Adhered Veneer Mortar is a preblended dry material specifically designed to bond thin masonry veneer units to solid base surfaces, such as masonry, concrete or galvanized, expanded metal lath. The final wall system will produce a non-load bearing, aesthetically pleasing exterior veneer or an interior finish ideal for concrete or masonry walls, stud walls or metal buildings. Good workmanship, coupled with proper detailing and design, ensures durable, functional, watertight construction.

[SPEC MIX Polymer Modified Adhered Veneer Mortar \(PMAVM\)](#)

SPEC MIX Polymer Modified Adhered Veneer Mortar (PMAVM) is a technically advanced mortar used to bond thin veneer masonry units to a substrate. It is an ideal solution for architects and contractors having projects with an immediate and ongoing need for mortar delivering high bond strength and sag resistance during installation. The non-sag formulation provides excellent workability, cohesion, high bond strength, water resistance, efflorescence minimization and durability. For applications in which mortar joints are not utilized, such as dry stack applications, SPEC MIX



From custom homes to commercial projects,
SPEC MIX Polymer Modified Adhered Veneer Mortar is the
ultimate material when building with adhered stone veneer masonry.

PMAVM can be used to gain extra bond strength and pop-out protection.

SPEC MIX PMAVM meets the requirements of ASTM C270 for Type S and N mortar, including appropriate ANSI 118.4 and ACI 530 shear bond standards. It has been rigorously tested to reduce the probability of unit "pop-offs" and contractor callbacks to repair failures common with inferior mortars.

Composition & Materials

SPEC MIX Adhered Veneer Mortar and Polymer Modified Adhered Veneer Mortar (PMAVM) are dry, preblended proprietary mixes containing cementitious materials, aggregates and special admixtures engineered to promote adhesion, reduce shrinkage and maximize product durability. When specified, a pigment can be preblended with either product to ensure color consistency in each bag.

SPEC MIX products are manufactured locally across the United States and Canada by licensed manufacturers who use specialized blending equipment and follow strict quality control procedures to meet project specifications, contractor expectations and applicable ASTM standards.

Sizes

SPEC MIX Adhered Veneer Mortars are packaged in 80 pound (36.3 kg) bags and 3000 pound (1360.8 kg) bulk bags. They can be used with any SPEC MIX material delivery system for increased job site efficiency and safety.



Engineered for optimal workability, bond strength and durability, SPEC MIX Adhered Veneer Mortars are superior

Benefits

- High bond strength
- Non-sag performance and reduced cracking
- Reduced pop-offs, call-backs and repairs
- Resists water penetration and efflorescence
- Preblended with sand to minimize labor and waste
- Consistent quality control with every bag
- Excellent workability and board life
- State-of-the-art batching process and strict quality control procedures help ensure that the finished product complies with design and specification requirements
- Batch-to-batch consistency is maintained using dried sands to eliminate the bulking effect associated with varying moisture within the aggregate
- Portable SPEC MIX silos are available to permit construction in all climates
- Pallets and bulk bag containers are completely reusable and are retrieved whenever a new load of material is delivered to a site
- Helps eliminate sand shoveling, heavy lifting and inconsistencies normally associated with hand or field mixing limitations
- For best results, mortar type should be correlated with the specific masonry unit to be used
- Bond strength, workability and water retention should be given principal consideration when selecting mortar
- Retempering colored mortar is not recommended

4. Technical Data

Applicable Standards

American Concrete Institute (ACI)

- **ACI 530** Building Code Requirements for Masonry Structures

American National Standards Institute (ANSI)

- **ANSI 118.4** American National Standard Specifications for Latex-Portland Cement Mortar

American Society for Testing and Materials (ASTM)

- **ASTM C91** Standard Specification for Masonry Cement
- **ASTM C109/C109M** Standard Test Method for Compressive Strength of Hydraulic Cement Mortars (Using 2 inch [50 mm] Cube Specimens)
- **ASTM C144** Standard Specification for Aggregate for Masonry Mortar
- **ASTM C150** Standard Specification for Portland Cement
- **ASTM C207** Standard Specification for Hydrated Lime for Masonry Purposes
- **ASTM C270** Standard Specification for Mortar for Unit Masonry
- **ASTM C482** Standard Specification for Bond Strength of Ceramic tile to Portland Cement Paste
- **ASTM C595** Standard Specification for Blended Hydraulic Cements
- **ASTM C847** Standard Specification for Metal Lath
- **ASTM C897** Standard Specification for Aggregate for Job-Mixed Portland Cement-Based Plasters

Table 1—Polymer Modified Adhered Veneer Mortar

ANSI 118.4:	
Room temperature open time, 70–77 degrees F (21–25 degrees C)	>65 minutes
High temperature open time, 100–110 degrees F (38–43 degrees C)	>15 minutes
Room temperature adjustability, 70–77 degrees F (21–25 degrees C)	>35 minutes
High temperature adjustability, 100–110 degrees F (38–43 degrees C)	>15 minutes
Sag on vertical surfaces	0"
Initial set at 100 degrees F (38 degrees C)	1.5 hours
Final set at 100 degrees F (38 degrees C)	2.5 hours
Shear bond strength @ 28 days	428 psi
ACI 530:	
Shear bond strength @ 28 days	330 psi

Table 2—Mortar Powder to Water Ratio

SPEC MIX PMAVM	Required Mixing Water
80 lb. (36.3 Kg) Bag	5.5 Quarts (5.2 Liters)
3000 lb. (1360.8 Kg) Bulk Bag	Call your local Spec Mix representative
Note: Water addition rates can vary slightly based on climate, installation method, stone type and regional material differences.	

- **ASTM C926** Standard Specification for Application of Portland Cement-Based Plaster
- **ASTM C979** Standard Specification for Pigments for Integrally Colored Concrete
- **ASTM C1329** Standard Specification for Mortar Cement
- **ASTM C1714** Standard Specification for Preblended Dry Mortar Mix for Unit Masonry

Uniform Building Code, (UBC)

- Standard No. 15-5 for Moisture Absorption

Other Approvals

- International Masonry All-Weather Council (IMIAC)—Recommended Practices and Guide Specification for Hot and Cold-Weather Masonry Construction
- Portland Cement Association, (PCA), Concrete Masonry Handbook for Architects, Engineers, Builders

Physical/Chemical Properties

See Table 1 for performance characteristics of SPEC MIX PMAVM.

Environmental Considerations

All SPEC MIX products are produced locally within 500 miles of the job site. Empty bags and wooden pallets are returned to the plant for reuse, reducing landfill impact. Use of SPEC MIX products can contribute points toward LEED® project certification.

5. Installation

Preparatory Work

Deliver products in manufacturer's original, unopened, undamaged containers with identification labels intact. SPEC MIX products are custom packaged to meet specification requirements. Handle and store product according to SPEC MIX recommendations. Keep dry, covered and protected from weather and other environmental hazards that could cause damage. When stored and protected as recommended, SPEC MIX products have a 9-month shelf life.

Verify that site conditions are acceptable for installation. Do not proceed with installation until unacceptable conditions are corrected.

Mortar type should correlate to the particular masonry unit to be used, as certain mortars are compatible with certain masonry units. The specifier should evaluate the interaction of the mortar type and masonry unit specified. Masonry units with a high initial rate of absorption will have greater compatibility with mortar of high water retention. The material properties that influence the structural performance of masonry are compressive strength, bond strength and elasticity. Since the compressive strength of masonry mortar is of less importance than bond strength, workability and water retentivity, the latter properties should be given priority in mortar selection.

Mortar selection should be based on design requirements and with due consideration given to the code and specification provisions affected by the mortar selected.

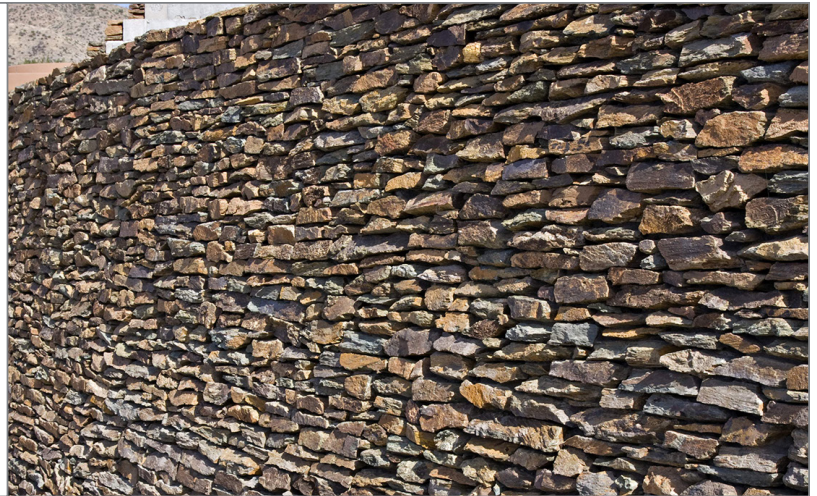
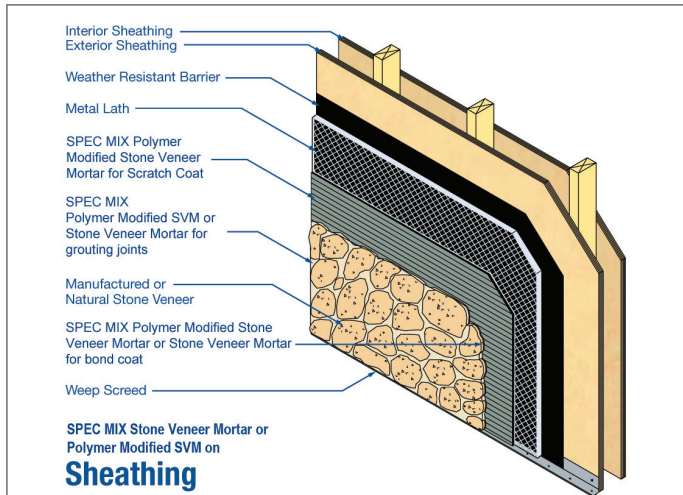
Mock-Ups

A sample of the proposed product will be provided by the manufacturer for onsite preparation of a sample panel for architectural approval and testing, if required. Preparation of this panel with all materials and systems that will be employed in the final project is imperative. Retain the mock-up or field sample through the completion of the project.

Methods

MIXING PMAVM: when mixing SPEC MIX PMAVM, use a mechanical batch mixer or an electric drill with a paddle to ensure homogeneity and good board life.

1. Add dry SPEC MIX PMAVM to clean potable water. Start with approximately 75 percent of the required water. (See Table 2 for details)



2. During 1-2 minutes of initial mixing, add remaining water as necessary, then let the mortar slake or set for approximately 5 minutes and then remix for 2 minutes.
3. Gauge the consistency of the mortar visually. A good workable mortar should have the consistency to be trowelable, but stiff enough to retain ridges and peaks when troweled on a horizontal or vertical surface area.
4. The workability of the mortar can be adjusted as necessary by adding either more water or more powder prior to final mixing. Mortar shall be used and placed in final position within one hour after initial mixing or discarded after that time period. Whenever possible, do not retemper colored SPEC MIX masonry mortars by adding additional water; retempering may affect color consistency. SPEC MIX products are custom packaged to the specification. They must be kept dry, covered and protected from weather and other damage.

Mixing Adhered Veneer Mortar:

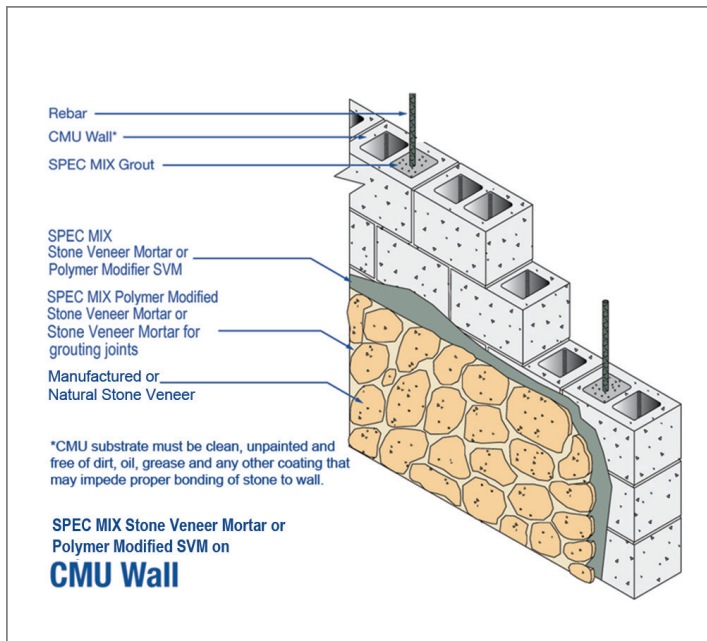
1. Use a mechanical batch mixer to ensure homogeneity, workability and good board life.
2. Add the minimum amount of clean, potable water for optimum workability
3. Mix for five minutes consistently from batch to batch.
4. Tool mortar joints when the surface is thumb-print hard. Keep tooling times consistent.
5. Hand mix mortar only with written approval by the specifier who should outline procedures.
6. Use mortar within 2½ hours after initial mixing.
7. Retemper mortar only when mixing water is lost due to evaporation.
8. Do not retemper colored mortar.

Application Over Wood & Lath

- When installing over galvanized metal lath, tightly attach the lath to the substrate using nails every 6 inch (152 mm); to eliminate waves in the lath when attaching it to plaster board or painted surfaces, screw lath into studs every 8 inches (203 mm)
- Using a trowel, apply mortar ½ inch (12.7 mm) thick to prepare the surface so no lath is exposed; to avoid setting or excessive water loss due to evaporation, apply mortar only in a working area less than 10 ft² (0.93 m²)
- Ensure that the lath is completely covered by the Polymer Modified Adhered Veneer Mortar or Adhered Veneer Mortar
- Before the mortar begins to harden, use a scratcher, scarifier or notched trowel to “scratch” the mortar surface
- After a 24-hour curing period, coat the back of each adhered masonry unit with sufficient mortar and press it firmly into place until the excess material spreads from the sides of the unit
- Once all units are in place, fill a grout bag with SPEC MIX Adhered Veneer Mortar; fill each joint by extruding the grout from the bag
- Tool, brush or rake joints

Application Over Masonry and Concrete

- Prepare painted, waterproofed or dirty surfaces for mortar application by sandblasting and cleaning, or by attaching a ASTM C847 compliant metal lath and applying a scratch coat of SPEC MIX Adhered Veneer Mortar or PMAVM
- Apply the mortar to the back of the masonry veneer unit surface at a minimum ½ inch (12.7 mm) thickness
- Apply the unit directly to the masonry, concrete substrate or scratch coat until the excess material spreads from the sides of the unit



- Once all the units are in place, fill a grout bag with SPEC MIX Adhered Veneer Mortar; fill each joint by extruding the grout from the bag
- Tool, brush or rake joints

Precautions

- Do not use PMAVM when temperatures are below 40 degrees F (4 degrees C)
- Allow mortar to cure for a minimum of 28 days
- Do not use mortar 1 hour or more after mixing
- Clean mortar only with potable water—do not use muriatic acid
- Tool mortar joints when the surface is thumbprint hard and keep tooling times consistent
- Do not strike joints too early or too late, as the color will not remain consistent with the mock-up panel
- Do not retemper colored Adhered Veneer Mortar or PMAVM by adding additional water as it will affect the final mortar color

Safety

WARNING

IMPORTANT! READ BEFORE USING. WEAR IMPERVIOUS GLOVES, such as nitrile.

WARNING: CAN CAUSE SERIOUS INJURY TO SKIN AND EYES. This product contains Portland cement. Contact with freshly mixed product can cause severe burns. Avoid direct contact with skin and eyes. If this product should contact eyes, immediately flush with water for at least 15 minutes and consult a physician. For skin exposure, wash promptly with plenty of soap and water. Remove soaked clothing promptly. If this product burns your skin, see a physician immediately.

This product may contain silica. Silica dust if inhaled may cause respiratory or other health problems. Prolonged inhalation may cause delayed lung injury, including silicosis and possibly cancer. A N95 approved dust mask, eye protection and rubber boots and gloves are recommended when using this product. Safety Data Sheets can be viewed online at www.specmix.com

KEEP OUT OF REACH OF CHILDREN WARNING: This product contains chemicals known to the State of California to cause cancer and birth defects or other reproductive harm.

Building Codes

SPEC MIX Polymer Modified Adhered Veneer Mortar and Adhered Veneer Mortar must be installed in accordance with the provisions of local building codes and in accordance with instructions and requirements provided by the precast stone or brick manufacturer.

6. Availability & Cost

Availability

SPEC MIX Products and SPEC MIX silo delivery systems are available through a network of nationally licensed manufacturers, with local distribution to major U.S. markets and to select regions of Canada. Contact SPEC MIX, Inc. for more information, or visit www.specmix.com/locator to locate a local manufacturer.

Cost

Market pricing and installed cost information may be obtained from a local SPEC MIX representative.

7. Warranty

Limited WARRANTY:

SPEC MIX, Inc. warrants this product to be of merchantable quality when used or applied in accordance with the instructions hereon. This product is not warranted as suitable for any purpose or use other than the general purpose for which it is intended. Liability under this warranty is LIMITED to the replacement of its product (as purchased) if found to be defective, or at the shipping company's option, to refund the purchase price. In the event of a claim under this warranty, notice must be given to SPEC MIX, Inc. in writing at: One Securities Centre, 3490 Piedmont Road, Suite 1300, Atlanta, GA 30305. THIS LIMITED WARRANTY IS ISSUED AND ACCEPTED IN LIEU OF ALL OTHER EXPRESS WARRANTIES AND EXPRESSLY EXCLUDES LIABILITY FOR CONSEQUENTIAL DAMAGES.

8. Maintenance

Properly mixed and installed masonry units and mortar require little maintenance. Depending on service

conditions, masonry walls may require periodic cleaning and tuckpointing. Clean masonry with potable water only. Do not use muriatic acid to clean colored mortar.

9. Technical Services

SPEC MIX products are produced locally across the United States and Canada by licensed manufacturers who use sophisticated blending equipment and follow strict quality control procedures to meet project specifications, contractor expectations and applicable ASTM standards.

SPEC MIX products are manufactured with strict standards and comprehensive quality control procedures in place for each batch. A digital printout displaying the proper proportions per batch is available upon request and may be kept as a permanent record. Only SPEC MIX offers this laboratory-controlled production system in preblended mortar.

SPEC MIX, Inc. will provide product samples for architectural approval and testing if requested, using all materials and systems that will be employed in the final project. Contact SPEC MIX, Inc. or a local SPEC MIX manufacturer, for technical service requests.

10. Filing Systems

- ConstructConnect
- Additional product information is available from the manufacturer upon request ↗