

## Structural Stud 1200S250-97

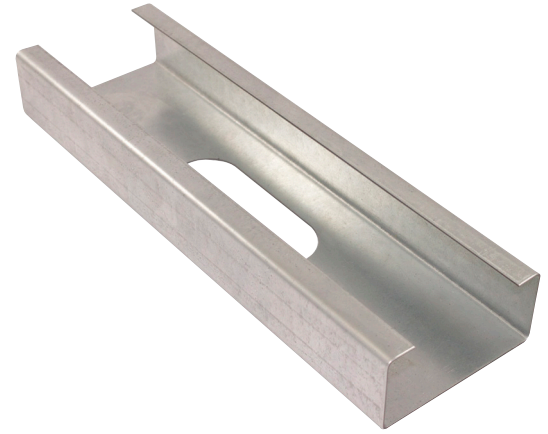
### Product Description

12 GA GALV 12.00" WEB X 2.50"  
FLANGE C-STUD .097 MIN  
GAUGE  
G60

### Coating

### Physical Properties

Design Thickness (in)	0.1017
Minimum Thickness (in)	0.0966
Web Width (in)	12.0000
Flange Width (in)	2.5000
Stiffening Lip (in)	0.6250
Yield Strength (ksi)	50.0000



### Gross Section Properties

Cross Sectional Area (A)	1.779
Weight of Member (lb/ft)	6.05
Section Modulus (Sx)	5.671
Moment of Inertia (Ix)	34.027
Radius of Gyration (Rx)	4.373
Gross Moment of Inertia (Iy)	1.122
Gross Radium of Gyration (Ry)	0.794

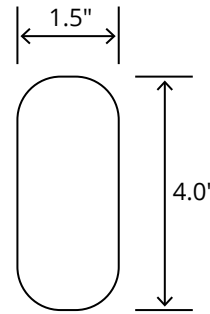
### Effective Section Properties

Moment of Inertia for deflection (Ixe)	33.837
Section Modulus (Sxe)	5.038
Allowable Bending moment (Ma)	150.83
Allowable shear force in web (U)(Vag)	8147
Allowable shear at punch (Vanet)	7411

### Torsional Properties

St. Venant torsion constant (J x 1000)	6.134
Warping constant (Cw)	32.734
Distance from shear center to neutral axis (Xo)	-1.329
Radii of gyration (Ro)	4.639
Torsional flexural constant (Beta)	0.918

### Punch Out



### ASTM & Code Standards

- AISI S100-12 & ICC ES ESR-4062
- Framing meets ASTM A1003, A653 & C955

### Notes

1. Calculated properties are based on AISI S100-16, North American Specification for Design of Cold-Formed Steel Structural Members.
2. The centerline bend radius is based on inside corner radii shown in thickness chart.
3. Effective properties incorporate the strength increase from the cold work of forming as applicable per AISI A3.3.2.
4. Tabulated gross properties are based on full-unreduced cross section of the studs, away from punch outs.
5. For deflection calculations, use the effective moment of inertia.
6. Allowable moment includes cold-work of forming.

## Mill Steel Framing LEED Green Credits

- MR Credit 2** • ConstructionWaste Management – Mill Steel Framing steel framing is 100% recyclable
- MR Credit 4** • Recycled Content – Mill Steel Framing products contain no less than 25.5% post-consumer and 6.8% pre-consumer recycled content
- MR Credit 5** • Regional Materials – Mill Steel Framing has manufacturing facilities in Indiana, Alabama & Texas
- V4 MR Credits** • Building Product Disclosure and Optimization EPD (1 point)  
• Materials Ingredients (1 point) – Construction and Demolition Waste Management (1 point)

