

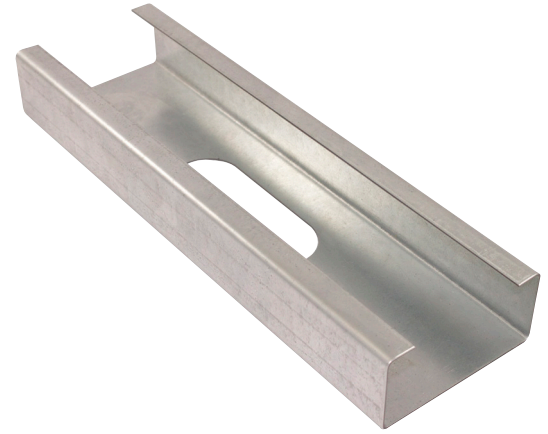
## Structural Stud 362S300-68

**Product Description** 14 GA GALV 3.62" WEB X 3.00" FLANGE C-STUD .068 MIN GAUGE

**Coating** G60

**Physical Properties**

Design Thickness (in) 0.0713  
 Minimum Thickness (in) 0.0677  
 Web Width (in) 3.6250  
 Flange Width (in) 3.0000  
 Stiffening Lip (in) 0.6250  
 Yield Strength (ksi) 50.0000

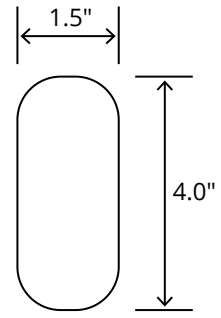


Gross Section Properties	
Cross Sectional Area (A)	0.738
Weight of Member (lb/ft)	2.51
Section Modulus (Sx)	0.947
Moment of Inertia (Ix)	1.716
Radius of Gyration (Rx)	1.525
Gross Moment of Inertia (Iy)	0.900
Gross Radium of Gyration (Ry)	1.105

Effective Section Properties	
Moment of Inertia for deflection (Ixe)	1.681
Section Modulus (Sxe)	0.716
Allowable Bending moment (Ma)	21.45
Allowable shear force in web (U)(Vag)	4370
Allowable shear at punch (Vanet)	1004

Torsional Properties	
St. Venant torsion constant (J x 1000)	1.250
Warping constant (Cw)	2.833
Distance from shear center to neutral axis (Xo)	-2.640
Radii of gyration (Ro)	3.243
Torsional flexural constant (Beta)	0.337

### Punch Out



### ASTM & Code Standards

- AISI S100-12 & ICC ES ESR-4062
- Framing meets ASTM A1003, A653 & C955

### Notes

1. Calculated properties are based on AISI S100-16, North American Specification for Design of Cold-Formed Steel Structural Members.
2. The centerline bend radius is based on inside corner radii shown in thickness chart.
3. Effective properties incorporate the strength increase from the cold work of forming as applicable per AISI A3.3.2.
4. Tabulated gross properties are based on full-unreduced cross section of the studs, away from punch outs.
5. For deflection calculations, use the effective moment of inertia.
6. Allowable moment includes cold-work of forming.

### Mill Steel Framing LEED Green Credits

- MR Credit 2** • ConstructionWaste Management – Mill Steel Framing steel framing is 100% recyclable
- MR Credit 4** • Recycled Content – Mill Steel Framing products contain no less than 25.5% post-consumer and 6.8% pre-consumer recycled content
- MR Credit 5** • Regional Materials – Mill Steel Framing has manufacturing facilities in Indiana, Alabama & Texas
- V4 MR Credits** • Building Product Disclosure and Optimization EPD (1 point)
- Materials Ingredients (1 point) – Construction and Demolition Waste Management (1 point)

