

Structural Stud 600S300-68G90

Product Description

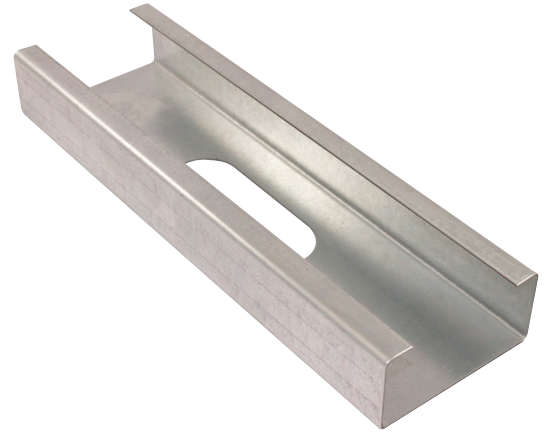
14 GA GALV 6.00" WEB X 3.00"
FLANGE C-STUD .068 MIN GAUGE
G90

Coating

G90

Physical Properties

Design Thickness (in)	0.0713
Minimum Thickness (in)	0.0677
Web Width (in)	6.0000
Flange Width (in)	3.0000
Stiffening Lip (in)	0.6250
Yield Strength (ksi)	50.0000



Gross Section Properties

Cross Sectional Area (A)	0.907
Weight of Member (lb/ft)	3.09
Section Modulus (Sx)	1.785
Moment of Inertia (Ix)	5.355
Radius of Gyration (Rx)	2.430
Gross Moment of Inertia (Iy)	1.075
Gross Radium of Gyration (Ry)	1.089

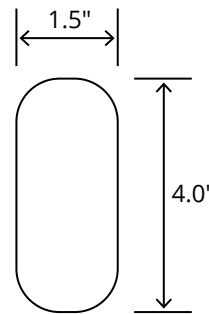
Effective Section Properties

Moment of Inertia for deflection (Ixe)	5.222
Section Modulus (Sxe)	1.446
Allowable Bending moment (Ma)	43.30
Allowable shear force in web (U)(Vag)	5350
Allowable shear at punch (Vanet)	2879

Torsional Properties

St. Venant torsion constant (J x 1000)	1.537
Warping constant (Cw)	7.937
Distance from shear center to neutral axis (Xo)	-2.280
Radii of gyration (Ro)	3.506
Torsional flexural constant (Beta)	0.577

Punch Out



ASTM & Code Standards

- AISI S100-12 & ICC ES ESR-4062
- Framing meets ASTM A1003, A653 & C955

Notes

1. Calculated properties are based on AISI S100-16, North American Specification for Design of Cold-Formed Steel Structural Members.
2. The centerline bend radius is based on inside corner radii shown in thickness chart.
3. Effective properties incorporate the strength increase from the cold work of forming as applicable per AISI A3.3.2.
4. Tabulated gross properties are based on full-unreduced cross section of the studs, away from punch outs.
5. For deflection calculations, use the effective moment of inertia.
6. Allowable moment includes cold-work of forming.

Mill Steel Framing LEED Green Credits

- MR Credit 2** • ConstructionWaste Management – Mill Steel Framing steel framing is 100% recyclable
- MR Credit 4** • Recycled Content – Mill Steel Framing products contain no less than 25.5% post-consumer and 6.8% pre-consumer recycled content
- MR Credit 5** • Regional Materials – Mill Steel Framing has manufacturing facilities in Indiana, Alabama & Texas
- V4 MR Credits** • Building Product Disclosure and Optimization EPD (1 point)
• Materials Ingredients (1 point) – Construction and Demolition Waste Management (1 point)

