

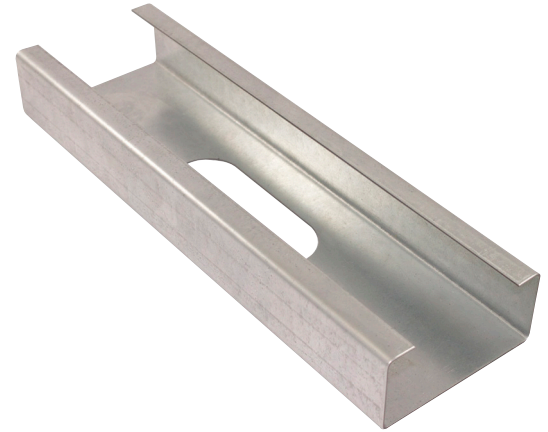
Structural Stud 400S200-54

Product Description 16 GA GALV 4" WEB X 2.00" FLANGE C-STUD .054 MIN GAUGE

Coating G60

Physical Properties

Design Thickness (in) 0.0566
 Minimum Thickness (in) 0.0538
 Web Width (in) 4.0000
 Flange Width (in) 2.0000
 Stiffening Lip (in) 0.6250
 Yield Strength (ksi) 50.0000



Gross Section Properties

Cross Sectional Area (A)	0.500
Weight of Member (lb/ft)	1.70
Section Modulus (Sx)	0.646
Moment of Inertia (Ix)	1.292
Radius of Gyration (Rx)	1.608
Gross Moment of Inertia (Iy)	0.287
Gross Radium of Gyration (Ry)	0.758

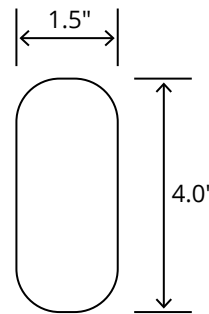
Effective Section Properties

Moment of Inertia for deflection (Ixe)	1.292
Section Modulus (Sxe)	0.549
Allowable Bending moment (Ma)	16.43
Allowable shear force in web (U)(Vag)	3372
Allowable shear at punch (Vanet)	1223

Torsional Properties

St. Venant torsion constant (J x 1000)	0.534
Warping constant (Cw)	1.083
Distance from shear center to neutral axis (Xo)	-1.662
Radii of gyration (Ro)	2.433
Torsional flexural constant (Beta)	0.534

Punch Out



ASTM & Code Standards

- AISI S100-12 & ICC ES ESR-4062
- Framing meets ASTM A1003, A653 & C955

Notes

1. Calculated properties are based on AISI S100-16, North American Specification for Design of Cold-Formed Steel Structural Members.
2. The centerline bend radius is based on inside corner radii shown in thickness chart.
3. Effective properties incorporate the strength increase from the cold work of forming as applicable per AISI A3.3.2.
4. Tabulated gross properties are based on full-unreduced cross section of the studs, away from punch outs.
5. For deflection calculations, use the effective moment of inertia.
6. Allowable moment includes cold-work of forming.

Mill Steel Framing LEED Green Credits

- MR Credit 2** • ConstructionWaste Management – Mill Steel Framing steel framing is 100% recyclable
- MR Credit 4** • Recycled Content – Mill Steel Framing products contain no less than 25.5% post-consumer and 6.8% pre-consumer recycled content
- MR Credit 5** • Regional Materials – Mill Steel Framing has manufacturing facilities in Indiana, Alabama & Texas
- V4 MR Credits** • Building Product Disclosure and Optimization EPD (1 point)
 • Materials Ingredients (1 point) – Construction and Demolition Waste Management (1 point)

