

## Structural Stud 600S137-43

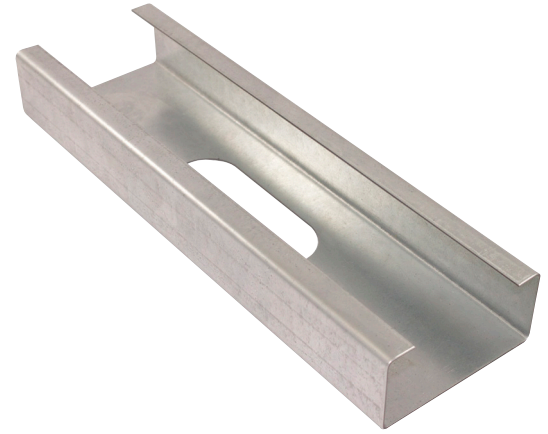
### Product Description

18 GA GALV 6.00" WEB x 1.37"  
FLANGE C-STUD .043 MIN  
GAUGE  
G60

### Coating

### Physical Properties

Design Thickness (in)	0.0451
Minimum Thickness (in)	0.0428
Web Width (in)	6.0000
Flange Width (in)	1.3750
Stiffening Lip (in)	0.3750
Yield Strength (ksi)	33.0000



### Gross Section Properties

Cross Sectional Area (A)	0.413
Weight of Member (lb/ft)	1.41
Section Modulus (Sx)	0.681
Moment of Inertia (Ix)	2.042
Radius of Gyration (Rx)	2.224
Gross Moment of Inertia (Iy)	0.087
Gross Radium of Gyration (Ry)	0.459

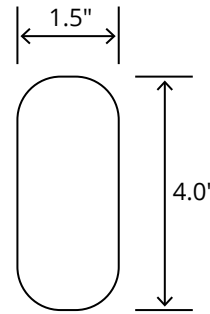
### Effective Section Properties

Moment of Inertia for deflection (Ixe)	2.041
Section Modulus (Sxe)	0.645
Allowable Bending moment (Ma)	12.74
Allowable shear force in web (U)(Vag)	1416
Allowable shear at punch (Vanet)	1240

### Torsional Properties

St. Venant torsion constant (J x 1000)	0.280
Warping constant (Cw)	0.633
Distance from shear center to neutral axis (Xo)	-0.796
Radii of gyration (Ro)	2.406
Torsional flexural constant (Beta)	0.890

### Punch Out



### ASTM & Code Standards

- AISI S100-12 & ICC ES ESR-4062
- Framing meets ASTM A1003, A653 & C955

### Notes

1. Calculated properties are based on AISI S100-16, North American Specification for Design of Cold-Formed Steel Structural Members.
2. The centerline bend radius is based on inside corner radii shown in thickness chart.
3. Effective properties incorporate the strength increase from the cold work of forming as applicable per AISI A3.3.2.
4. Tabulated gross properties are based on full-unreduced cross section of the studs, away from punch outs.
5. For deflection calculations, use the effective moment of inertia.
6. Allowable moment includes cold-work of forming.

## Mill Steel Framing LEED Green Credits

- MR Credit 2** • ConstructionWaste Management – Mill Steel Framing steel framing is 100% recyclable
- MR Credit 4** • Recycled Content – Mill Steel Framing products contain no less than 25.5% post-consumer and 6.8% pre-consumer recycled content
- MR Credit 5** • Regional Materials – Mill Steel Framing has manufacturing facilities in Indiana, Alabama & Texas
- V4 MR Credits** • Building Product Disclosure and Optimization EPD (1 point)  
• Materials Ingredients (1 point) – Construction and Demolition Waste Management (1 point)

