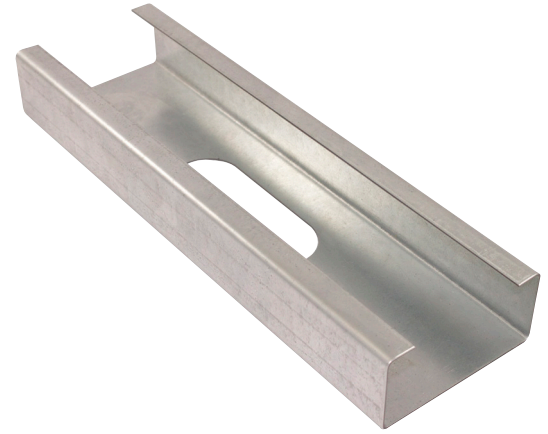


Structural Stud 400S250-33

Product Description 20 GA GALV 4.00" WEB X 2.50" FLANGE C-STUD .033 MIN GAUGE
Coating G60

Physical Properties
 Design Thickness (in) 0.0346
 Minimum Thickness (in) 0.0329
 Web Width (in) 4.0000
 Flange Width (in) 2.5000
 Stiffening Lip (in) 0.6250
 Yield Strength (ksi) 33.0000



Gross Section Properties

Cross Sectional Area (A)	0.344
Weight of Member (lb/ft)	1.17
Section Modulus (Sx)	0.474
Moment of Inertia (Ix)	0.948
Radius of Gyration (Rx)	1.660
Gross Moment of Inertia (Iy)	0.310
Gross Radium of Gyration (Ry)	0.949

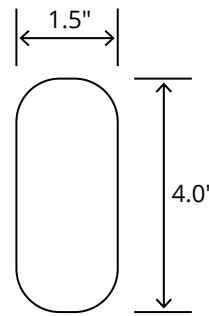
Effective Section Properties

Moment of Inertia for deflection (Ixe)	
Section Modulus (Sxe)	
Allowable Bending moment (Ma)	
Allowable shear force in web (U)(Vag)	
Allowable shear at punch (Vanet)	

Torsional Properties

St. Venant torsion constant (J x 1000)	0.137
Warping constant (Cw)	1.165
Distance from shear center to neutral axis (Xo)	-2.151
Radii of gyration (Ro)	2.878
Torsional flexural constant (Beta)	0.441

Punch Out



ASTM & Code Standards

- AISI S100-12 & ICC ES ESR-4062
- Framing meets ASTM A1003, A653 & C955

Notes

1. Calculated properties are based on AISI S100-16, North American Specification for Design of Cold-Formed Steel Structural Members.
2. The centerline bend radius is based on inside corner radii shown in thickness chart.
3. Effective properties incorporate the strength increase from the cold work of forming as applicable per AISI A3.3.2.
4. Tabulated gross properties are based on full-unreduced cross section of the studs, away from punch outs.
5. For deflection calculations, use the effective moment of inertia.
6. Allowable moment includes cold-work of forming.

Mill Steel Framing LEED Green Credits

- MR Credit 2** • ConstructionWaste Management – Mill Steel Framing steel framing is 100% recyclable
- MR Credit 4** • Recycled Content – Mill Steel Framing products contain no less than 25.5% post-consumer and 6.8% pre-consumer recycled content
- MR Credit 5** • Regional Materials – Mill Steel Framing has manufacturing facilities in Indiana, Alabama & Texas
- V4 MR Credits** • Building Product Disclosure and Optimization EPD (1 point)
 • Materials Ingredients (1 point) – Construction and Demolition Waste Management (1 point)

