

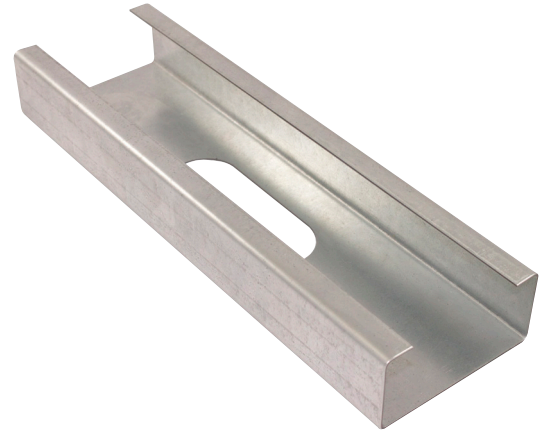
Structural Stud 800S200-33

Product Description 20 GA GALV 8.00" WEB x 2.00" FLANGE C-STUD .033 MIN GAUGE

Coating G60

Physical Properties

Design Thickness (in)	0.0346
Minimum Thickness (in)	0.0329
Web Width (in)	8.0000
Flange Width (in)	2.0000
Stiffening Lip (in)	0.6250
Yield Strength (ksi)	33.0000



Gross Section Properties

Cross Sectional Area (A)	0.448
Weight of Member (lb/ft)	1.52
Section Modulus (Sx)	1.024
Moment of Inertia (Ix)	4.097
Radius of Gyration (Rx)	3.024
Gross Moment of Inertia (Iy)	0.227
Gross Radium of Gyration (Ry)	0.712

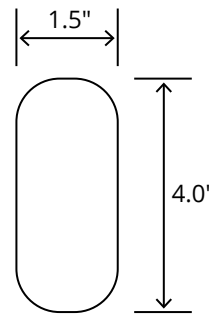
Effective Section Properties

Moment of Inertia for deflection (Ixe)	4.096
Section Modulus (Sxe)	0.816
Allowable Bending moment (Ma)	16.12
Allowable shear force in web (U)(Vag)	474
Allowable shear at punch (Vanet)	474

Torsional Properties

St. Venant torsion constant (J x 1000)	0.179
Warping constant (Cw)	2.971
Distance from shear center to neutral axis (Xo)	-1.288
Radii of gyration (Ro)	3.363
Torsional flexural constant (Beta)	0.853

Punch Out



ASTM & Code Standards

- AISI S100-12 & ICC ES ESR-4062
- Framing meets ASTM A1003, A653 & C955

Notes

1. Calculated properties are based on AISI S100-16, North American Specification for Design of Cold-Formed Steel Structural Members.
2. The centerline bend radius is based on inside corner radii shown in thickness chart.
3. Effective properties incorporate the strength increase from the cold work of forming as applicable per AISI A3.3.2.
4. Tabulated gross properties are based on full-unreduced cross section of the studs, away from punch outs.
5. For deflection calculations, use the effective moment of inertia.
6. Allowable moment includes cold-work of forming.

Mill Steel Framing LEED Green Credits

- MR Credit 2** • ConstructionWaste Management – Mill Steel Framing steel framing is 100% recyclable
- MR Credit 4** • Recycled Content – Mill Steel Framing products contain no less than 25.5% post-consumer and 6.8% pre-consumer recycled content
- MR Credit 5** • Regional Materials – Mill Steel Framing has manufacturing facilities in Indiana, Alabama & Texas
- V4 MR Credits** • Building Product Disclosure and Optimization EPD (1 point)
- Materials Ingredients (1 point) – Construction and Demolition Waste Management (1 point)

