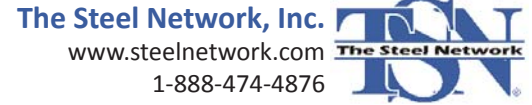


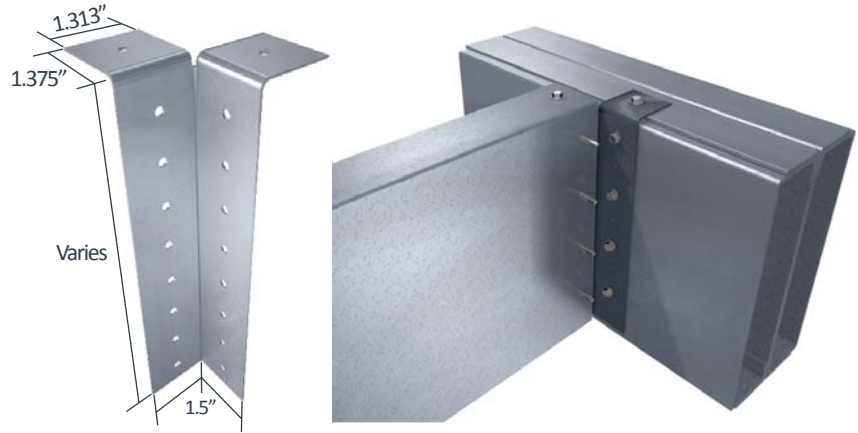
# StiffClip® JC

Joist Connector



### Material Composition

ASTM A1003/A1003M Structural Grade 50 (340) Type H, ST50H (ST340H): 50ksi (340MPa) minimum yield strength, 65ksi (450MPa) minimum tensile strength, with ASTM A653/A653M G90 (Z275) hot dipped galvanized coating.



### StiffClip JC Allowable Loads

StiffClip® JC Recommended Allowable Load (lbs): F3													
Joist		JC362/400-43	JC362/400-68	JC600-43		JC600-68		JC800-43		JC800-68		JC1000-68	
Thickness Mils (ga)	Yield Strength (ksi)	w/3 #12 screws	w/3 #12 screws	w/3 #12 screws	w/5 #12 screws	w/3 #12 screws	w/5 #12 screws	w/4 #12 screws	w/7 #12 screws	w/4 #12 screws	w/7 #12 screws	w/5 #12 screws	w/9 #12 screws
33 (20)	33	492	492	544	882	544	882	735	1,270	735	1,270	N/A	N/A
33 (20)	50	710	710	787	1,274	787	1,274	1,062	1,835	1,062	1,835	N/A	N/A
43 (18)	33	732	732	810	1,312	810	1,312	1,094	1,890	1,094	1,890	1,377	2,462
43 (18)	50	1,057	1,057	1,171	1,896	1,171	1,896	1,580	2,730	1,580	2,730	1,989	3,557
54 (16)	33	1,029	1,029	1,140	1,845	1,140	1,845	1,538	2,658	1,538	2,658	1,936	3,462
54 (16)	50	1,486	1,486	1,646	2,158	1,646	2,665	2,221	3,838	2,221	3,838	2,796	4,779
68 (14)	50	1,487	2,102	1,647	2,158	2,327	3,639	2,223	3,841	3,140	4,488	3,954	4,779
97 (12)	50	1,487	2,216	1,647	2,158	2,454	3,639	2,223	3,841	3,311	4,488	4,169	4,779
<b>Max Allowable Clip Load</b>		<b>1,606</b>	<b>2,302</b>	<b>2,158</b>		<b>3,639</b>		<b>3,960</b>		<b>4,488</b>		<b>4,779</b>	

StiffClip® JC Recommended Allowable Load (lbs): F3							
Joist		JC1200-68		JC1400-68		JC1600-68	
Thickness Mils (ga)	Yield Strength (ksi)	w/6 #12 screws	w/11 #12 screws	w/7 #12 screws	w/13 #12 screws	w/8 #12 screws	w/15 #12 screws
54 (16)	33	2,334	4,262	2,732	5,063	3,131	5,855
54 (16)	50	3,371	6,156	3,947	6,670	4,522	6,670
68 (14)	50	4,467	6,670	5,580	6,670	6,393	6,670
97 (12)	50	5,026	6,670	5,884	6,670	6,670	6,670
<b>Max Allowable Clip Load</b>		<b>6,670</b>		<b>6,670</b>		<b>6,670</b>	

### Notes:

- StiffClip JC resists vertical loads.
- The attachment to the beam or structure must be designed to be greater than or equivalent to the joist attachment.
- Design loads consider clip capacity and screw connection to the joist only.
- Allowable loads have not been increased for wind, seismic, or other factors.
- All guide holes may not require fasteners. Fastener size and amount determined by designer.
- Torsional effects are considered on screw group for F3 allowable loads. It is assumed that half of the torsional moment is taken by the connection to the structure and half is taken by the connection to the stud, i.e. ½ in the joist connection and ½ in the structure connection.

### Nomenclature

StiffClip JC is designated by listing the joist depth in inches, followed by the required clip thickness in mils that will accommodate anticipated loads. (see load tables above)

**Example:** 6" joist, 3,000 lbs. load  
**Designate:** StiffClip® JC600-68

### Load Direction

