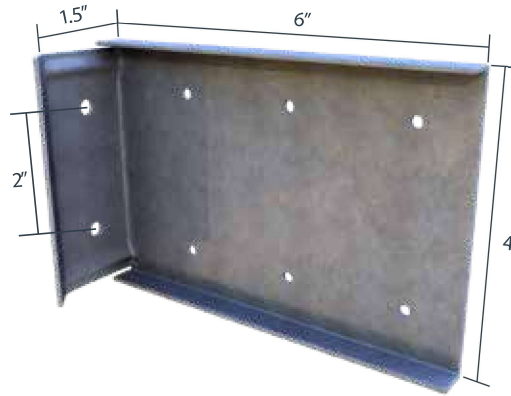


StiffClip® LB-HD

Spandrel Wall Bypass for Seismic Conditions

Material Composition

ASTM A1003/A1003M Structural Grade 50 (340) Type H, ST50H (ST340H): 50ksi (340 MPa) minimum yield strength, 65ksi minimum tensile strength, 68mil minimum thickness (14 gauge, 0.0713" design thickness) with ASTM A653/653M G90 (Z275) hot dipped galvanized coating.



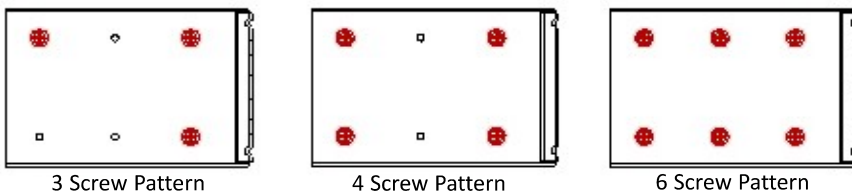
StiffClip LB-HD Allowable Loads

StiffClip® LB-HD, Recommended Allowable Load (lbs): F1, F2 & F3									
Screw Patterns with #12 Screws	F1 Load Direction			F2 Load Direction			F3 Load Direction		
	LB600-HD			LB600-HD			LB600-HD		
	3 Screws	4 Screws	6 Screws	3 Screws	4 Screws	6 Screws	3 Screws	4 Screws	6 Screws
33mil (20ga), 33ksi Stud	190	190	190	522	752	1,128	317	449	598
33mil (20ga), 50ksi Stud	276	276	276	755	1,088	1,130	459	650	865
43mil (18ga), 33ksi Stud	248	248	248	777	1,120	1,130	472	669	891
43mil (18ga), 50ksi Stud	358	358	358	1,124	1,130	1,130	683	967	1,289
54mil (16ga), 33ksi Stud	312	312	312	1,094	1,130	1,130	664	941	1,254
54mil (16ga), 50ksi Stud	450	450	450	1,130	1,130	1,130	959	1,359	1,810
68mil (14ga), 50ksi Stud	568	568	568	1,130	1,130	1,130	1,209	1,712	1,966
97mil (12ga), 50ksi Stud	810	810	810	1,130	1,130	1,130	1,209	1,712	1,966
Maximum Allowable Clip Load	857			1,130			1,966		

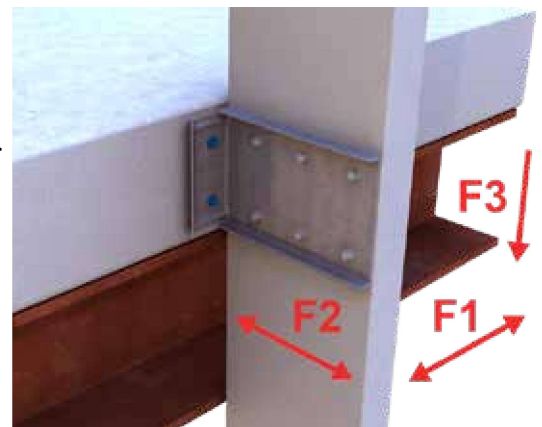
Load Table Notes:

- Design loads are for attachment of StiffClip LB-HD to stud only. Load tables reflect in plane of wall loads (F1), horizontal loads (F2) and vertical loads (F3).
- Design loads consider loads on the clip and #12 screw fasteners to the stud web.
- Loads listed reflect force in a single direction. When multiple loads react on the connection, it is the responsibility of the designer to check the interaction of forces.
- Torsional effects are considered on screw group for F3 allowable loads. It is assumed that half of the torsional moment is taken by the connection to the structure and half is taken by the connection to the stud.
- Attachment to structure engineered by others.
- Allowable loads have not been increased for wind, seismic, or other factors.
- Guideholes for stud connection are 0.172" diameter for #12 screws. Guideholes for structure connection are 3/8" diameter for (2) 1/4" diameter anchors.
- Fasten within 3/4" from the angle heel (centerline of the 1-1/2" leg) to minimize eccentric load transfer.
- For LRFD strengths contact TSN technical services.

Screw Patterns

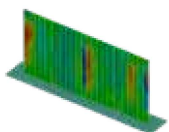


Load Direction



Nomenclature

StiffClip LB-HD is designed to be used with 6" studs and is designated *StiffClip® LB600-HD*



StiffClip LB-HD Series
Blast and Seismic Design Data
www.steelnetwork.com

** For more information or to review a copy of this report, please visit our website at <http://www.steelnetwork.com/light-steel-framing-design-resources>