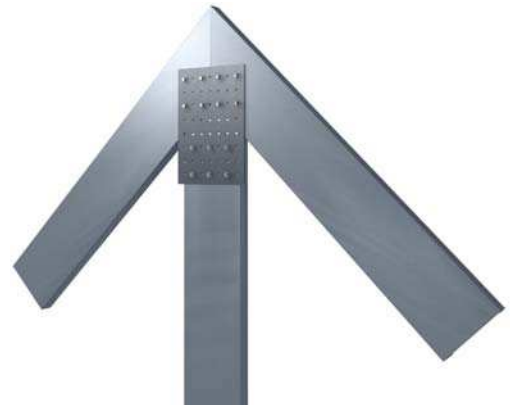


StiffClip® PL

Truss Plate Connector

Material Composition

ASTM A1003/A1003M Structural Grade 50 (340) Type H, ST50H (ST340H): 50ksi (340MPa) minimum yield strength, 65ksi (450MPa) minimum tensile strength, with ASTM A653/A653M G90 (Z275) hot dipped galvanized coating.



StiffClip PL Allowable Loads

Plates used to connect framing are generally considered as pinned joints. Load transfers through screw or welded connections between members.

Notes:

- All guide holes may not require fasteners. Number and size of fasteners used is based on fastener manufacturer's allowable load data, and is to be determined by designer.
- Guide holes are 0.172" in diameter unless specified.
- Guide holes have ½" minimum edge distance and 1" minimum spacing. Spacing will vary based on plate size and specified project requirements.

Nomenclature

StiffClip PL is available in many different shapes and is designated as width x length - material thickness.

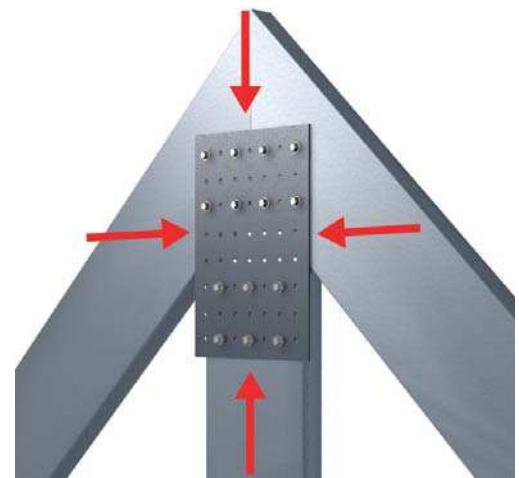
Example: 10" wide x 24" long with 68 mil thickness

Designate: StiffClip® PL10x24-68

* Clip sizes vary within each application

**StiffClip PL are typically made to order per project specifications.

Load Direction



Example Details

