



Drywall Members & Accessories

QUALITY LIGHT STEEL FRAMING MEMBERS AND CONNECTIONS

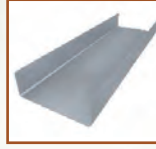
Drywall Framing Members

PrimeWall® Studs



PrimeWall® Stud Interior Drywall Stud
PrimeWall® EQ Stud Interior Drywall Stud

PrimeWall® Tracks



PrimeWall® Track Interior Drywall Track
PrimeWall® EQ Track Interior Drywall Track

Drywall Framing Accessories

PrimeWall® Channels



PrimeWall® Resilient Channel
Interior Sound Reduction Channel
PrimeWall® Furring Channel
Interior Hat Channel

PrimeWall® Channels & Angles



PrimeWall® Z-Furring Channel
Interior Drywall Channel
PrimeWall® Cold-Rolled Channel
U-Channel
PrimeWall® Angle Multi-Purpose Angle

The Steel Network offers solutions for all standard Light Steel Framing Applications.
Visit www.steelnetwork.com for a full list of our quality products



StiffClip® HE



StiffClip® LB-HD



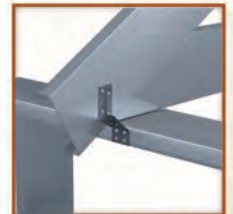
StiffClip® LS



StiffClip® TD



StiffClip® HC



StiffClip® RT



StiffClip® AL



StiffClip® LB

Drywall Framing

PrimeWall® Stud & Track

Introduction:

The PrimeWall® Series of drywall accessories is used in non-load-bearing wall systems that support gypsum board construction. Each component is manufactured from corrosion resistant, galvanized steel and is available in a wide variety of configurations. Because The Steel Network is committed to improving overall quality in the construction industry, we insist on utilizing traceable material for all steel in the manufacturing of the PrimeWall Series.

Quality

- Knurled flanges for fast fastener placement when connecting sheathing
- Wide flanges for increased target area for screws to hit
- Manufactured from mill-certified steel

Value

- No grooves or ribs to interfere with screw placement
- Pre-punched knockouts for rapid installation of bridging, and MEP

PrimeWall® Stud Interior Drywall Stud

Features

- Knurled flanges for fast fastener placement when connecting sheathing
- Pre-punched knockouts are spaced at regular intervals for rapid installation of bridging, electrical wiring, and plumbing.

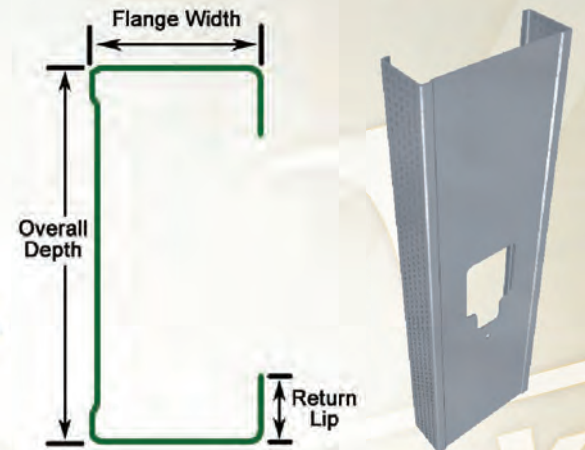
Nomenclature



Available Section Depths:
162, 250, 350, 362, 400, 550, & 600

Available Flange Widths:
125

Available Thicknesses:
0.018", 0.027", & 0.030"



PrimeWall® EQ Stud Interior Drywall Stud

Features

- Knurled flanges with no grooves or ribs to interfere with screw placement
- Wide flanges for increased target area for screws to hit
- Material is optimized with decreased mil thickness, while maintaining higher strength and stiffness
- Strengthened with increased yield strength and deeper lip

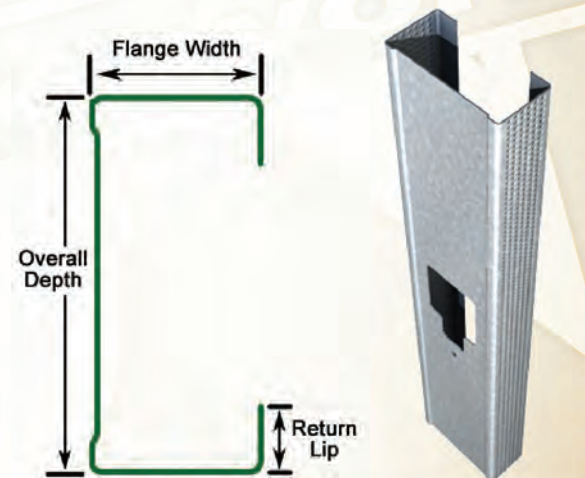
Nomenclature



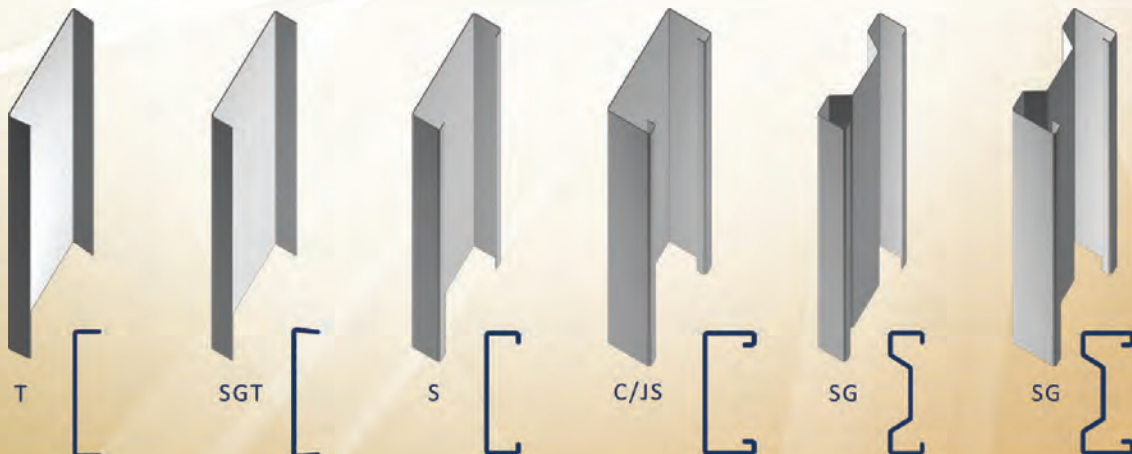
Available Section Depths:
162, 250, 362, 400, & 600

Available Flange Width:
134

Available Thicknesses:
0.019" & 0.021"



Visit www.steelnetwork.com for information on all of our quality products!



PrimeWall® Track Interior Drywall Track

Features

- Available in a wide variety of configurations
- Readily addresses all construction situations

Nomenclature

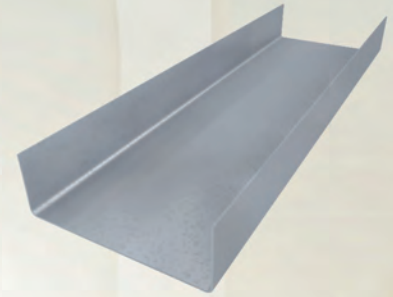
162T125-18



Available Section Depths:
162, 250, 350, 362, 400, 550, and 600

Available Leg Lengths:
125

Available Thicknesses:
0.018", 0.027", 0.030"



PrimeWall® EQ Track Interior Drywall Track

Features

- Available in a wide variety of configurations
- Readily addresses all construction situations
- Designed and engineered to meet standard 20 gauge applications
- Strengthened with increased yield strength

Nomenclature

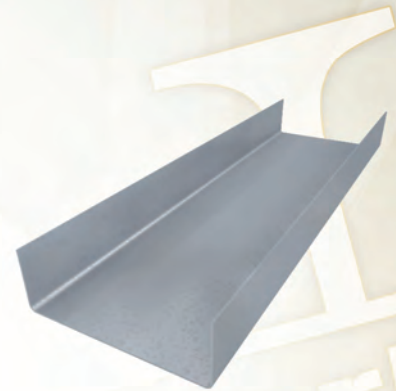
362PWT125-19NS, 55 ksi



Available Section Depths:
162, 250, 362, 400, & 600

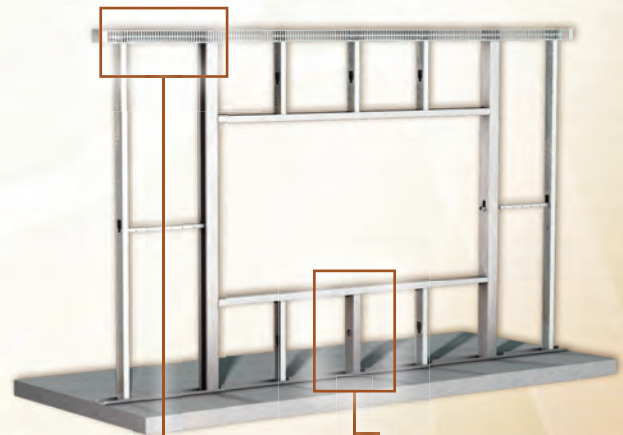
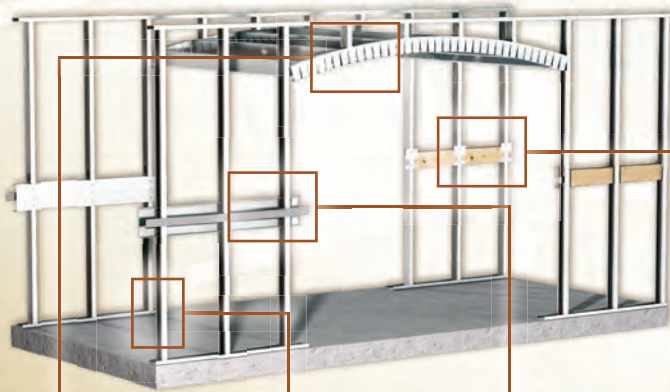
Available Leg Lengths:
125 & 200

Available Thickness:
0.019"



The Steel Network is a full service manufacturer, providing solutions for all standard light steel framing applications, including these interior, non-load bearing products. Even special connections will be made under the same guidelines for material traceability and material composition requirements as the Building Code evaluated parts.

Visit www.steelnetwork.com for a full list of our quality products



CircleTrak®



PrimeWall® EQ Stud



NotchTrack™



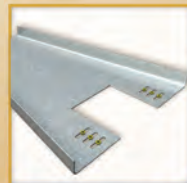
BackIt®



VertiTrack® VT



MidWall®



Custom

Drywall Framing

PrimeWall® Channels

Introduction:

The PrimeWall® Series of drywall accessories is used in non-load-bearing wall systems that support gypsum board construction. Each component is manufactured from corrosion-resistant, galvanized steel and is available in a wide variety of configurations. Because The Steel Network is committed to improving overall quality in the construction industry, we insist on utilizing traceable material for all steel in the manufacturing of the PrimeWall® Series.

Quality

- Knurled flanges for fast fastener placement when connecting sheathing
- Wide flanges for increased target area for screws to hit
- Manufactured from mill-certified steel

Value

- No groves or ribs to interfere with screw placement
- Pre-punched knockouts for rapid installation of bridging, and MEP

PrimeWall® Resilient Channel Interior Sound Reduction Channel

Features

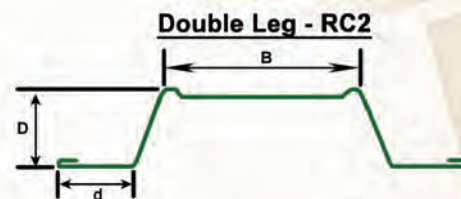
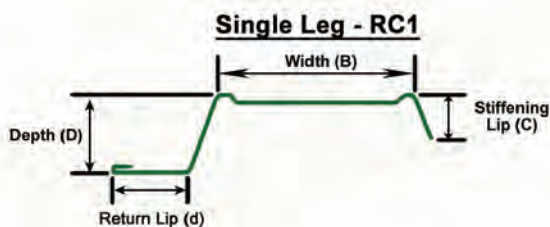
- Designed to greatly assist in the marked reduction of sound through partitions and ceiling assemblies
- Highly effective & efficient
- Manufactured from corrosion-resistant galvanized steel
- Contains a 1.25" screw flange, commonly used in wall applications
- Double leg PrimeWall® Resilient Channel (RC2) has two legs for rapid installation, and is typically used for ceiling applications with multiple layers of gypsum board

Nomenclature



Number of Legs:
1 or 2

Available Thicknesses*:
0.018" & 0.030"



* Hemmed leg tracks (H) are available in 18 mil thicknesses and the un-hemmed leg tracks (NH) are available in 30mil thicknesses

PrimeWall® Furring Channel Interior Hat Channel

Features

- Corrosion-resistant framing component used in conjunction with the furring out of masonry walls and ceiling assemblies
- Designed with knurled webs to facilitate faster attachments
- Form the support structure needed to secure the interior gypsum board, lathe or veneers to the exterior concrete wall for wall applications
- Can provide the horizontal bridge support needed between the building's structure and the designed ceiling (suspended or otherwise) for ceiling applications

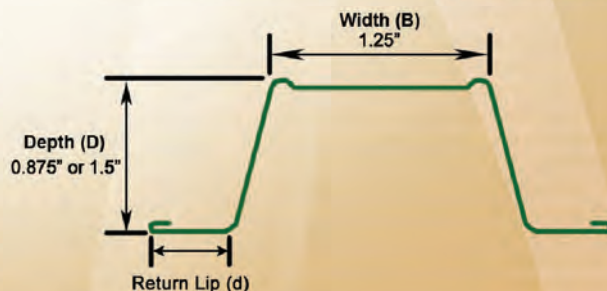
Nomenclature



Available Section Depths:
087 & 150

Available Flange Width:
125

Available Thicknesses*:
0.018", 0.030 & 0.043"



* Hemmed leg tracks (H) are available in 18 mil thicknesses

PrimeWall® Z-Furring Channel Interior Drywall Channel

Features

- Used in conjunction with the furring out of interior masonry or poured concrete wall substrates, in the support of rigid insulation
- Provides a level plane for sheathing attachment
- Type of fastener and spacing will vary based on application

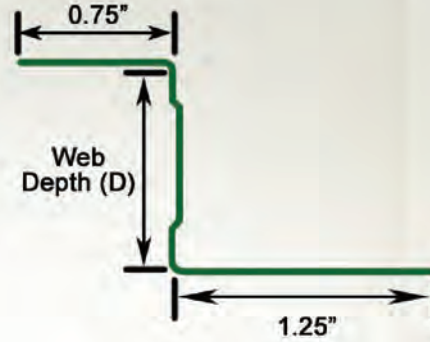
Nomenclature

150ZF125-18, 33 ksi



Available Section Depths:
100, 150, & 200

Available Thicknesses:
0.018" & 0.030"



PrimeWall® Cold-Rolled Channel U-Channel

Features

- Used to provide support for studs thereby preventing torsional rotation in interior partition walls
- Provides an additional option to other methods of bridging such as BridgeBar®, for those who prefer a choice

Nomenclature

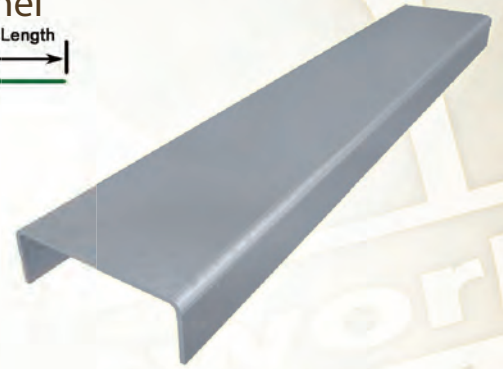
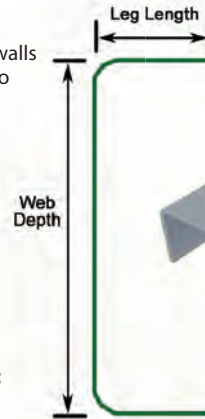
150U050-54, 33 ksi



Available Section Depths:
075 & 150

Available Leg Length:
050

Available Thickness:
0.054"



PrimeWall® Angle Multi-Purpose Angle

Features

- Used to provide support for studs thereby preventing torsional rotation in interior partition walls
- Provides an additional option to other methods of bridging such as BridgeBar®, for those who prefer a choice

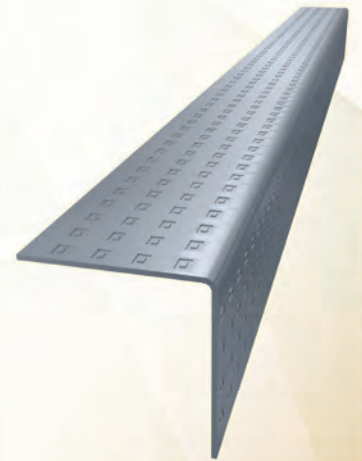
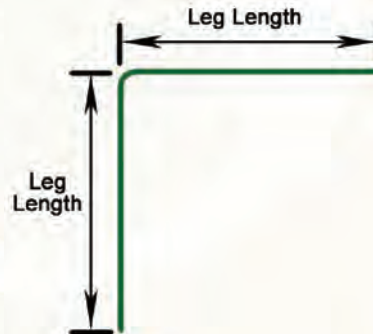
Nomenclature

150L-54, 33 ksi



Available Section Legs:
150, 200 & 300

Available Thicknesses:
0.018", 0.030", 0.043", & 0.054"



Did You Know?

362PWS134-19NS, 55ksi & 600PWS134-21NS, 55ksi are Certified by SFIA. For more information,

visit www.steelnetwork.com

and select the SFIA link on the EQ Stud Product page.

Check the latest list of SFIA Certified Production Facilities at Architectural Testing, Inc.'s Website:

http://www.archtest.com/certification/SFIA_SteelFraming.aspx



Terms, Conditions, and Limited Warranty

Product Use

Products in this catalog are designed and manufactured for the specific purposes shown, and should not be used in other applications unless approved by a qualified design professional. All modifications to products or changes in installation procedures should be made by a qualified design professional. The performance of such modified products or altered installation procedures is the sole responsibility of the design professional or installation contractor. The installation contractor and/or qualified design professional are responsible for installing all products in accordance with relevant specifications and building codes.

Customers modifying products or installation procedures, or designing Custom products for fabrication by The Steel Network, Inc. ("TSN") shall, regardless of specific instructions to the user, indemnify, defend, and hold TSN harmless for any and all claimed loss or damage occasioned in whole or in part by Custom or modified products or installation procedures.

Modifications to TSN products, improper loading or installation procedures, or deviations from recommended applications will affect TSN products' load-carrying capacities. TSN products are fabricated from hot-dipped galvanized steel for corrosion protection but will corrode and lose load-carrying capacity if exposed to salt air, corrosive fire-retardant chemicals, fertilizers, pressure treated wood or other substances that may adversely affect steel or its galvanized coating. This document edition reflects changes in the allowable loads and configurations of some of TSN's products. This information supercedes information in earlier documents or technical reports. All earlier documents or technical reports should be discarded and reference made exclusively to this edition. TSN may correct any clerical or typographical errors. All sales are subject to TSN's standard terms and conditions of sale.

Limited Warranty

TSN warrants its products to be free from defects in material or workmanship at the time of shipment. TSN standard catalog products are warranted for adequacy of design when used in accordance with design limits in this catalog and properly specified and installed. TSN products shall not be substituted with non-TSN products if it is part of a system. Substitution of a TSN product will immediately void any warranty claim made by Purchaser. This warranty excludes uses not in compliance with specific applications and installation procedures set forth in this catalog. Warranty claims must be made by Purchaser in writing within ninety (90) days of receipt of the products.

All warranty obligations of TSN shall be limited, at the sole discretion of TSN, to repair or replace the defective product(s). These remedies shall constitute TSN's sole obligation and sole remedy of purchaser under this warranty. In no event will TSN be responsible for incidental, consequential, indirect, exemplary, incidental, special, consequential, or punitive damages, or other losses or damages however caused, including, but not limited to, installation costs, lost revenue or lost profits. TSN's liability for damages shall in no event exceed the applicable portion of the purchase price for defective product(s).

Product defects that arise from acts of God, accidents, misuse, misapplication, improper installation, storage damage, negligence, or modification to product(s) or its components are specifically excluded from this warranty. Product defects that arise from Purchaser providing incorrect information to TSN, including but not limited to incorrect specifications such as incorrect dimensions, designs and/or loads, are also specifically excluded from this warranty. TSN does not authorize any person or party to assume or create for it any other obligation or liability in connection with Products except as set forth herein.

This Warranty is expressly in lieu of all other warranties, expressed or implied, including any warranties of merchantability or fitness for a particular purpose, all such other warranties being hereby expressly excluded.

Patented Technology

BackIt®, BridgeBar®, BridgeClip®, BuckleBridge®, CircleTrak®, DriftClip®, DriftCorner®, DriftTrak®, GripClip®, 600JAM®, 800JAM®, JamStud®, MidWall™, MasterClip®, NotchTrak®, PrimeWall®, 600SG®, 800SG®, SigmaStud®, SigmaTrak®, Step-Bushing Technology™, StiffClip®, StiffWall®, ThermaFast®, TightStrap®, VertiClip®, and VertiTrack® are trademarked products, and are patented or patent-pending technologies of TSN. Numerous TSN design configurations are patented and/or patent pending and are protected under US and International patent laws. Patent numbers include: #4,970,410; #4,970,411; #4,970,412; #4,970,413; #5,079,710; #5,467,566; #5,904,023; #5,906,080; #6,612,087; #6,701,689; #6,892,504; #7,104,024; #7,503,150; #7,559,519; #7,596,921; #7,634,889; #7,788,878; #7,832,162; #7,836,657; #8,132,383; #8,181,419; #8,205,402; #8,387,321 and #8,683,770.

Contact Information

North Carolina

The Steel Network, Inc.
2012 T W Alexander Drive
P.O. Box 13887
Durham, NC 27709
Phone: (919) 845-1025
Fax: (888) 474-4877

Texas

The Steel Network, Inc.
600 Lemens Avenue
Suite 120
Hutto, TX 78634
Phone: (512) 642-9603
Fax: (512) 857-1663

Nevada

The Steel Network, Inc.
1650 Helm Drive
Suite 1000 - 1200
Las Vegas, NV 89119
Phone: (702) 643-4330
Fax: (702) 643-4331



Web Site: www.steelnetwork.com
E-mail: support@steelnetwork.com

Toll Free Nationwide Phone
(888) 474-4876

Copyright © 2020 The Steel Network Inc. All rights reserved. No part of this publication may be reproduced in whole or in part by any method without the prior written consent of The Steel Network, Inc.



TNS
The Steel Network®