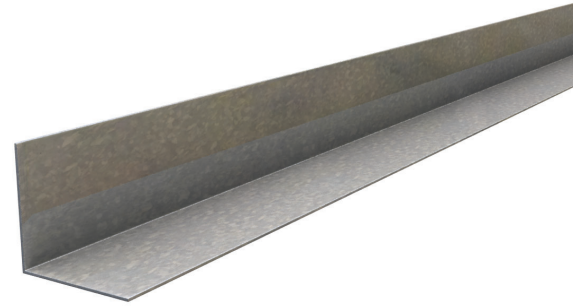
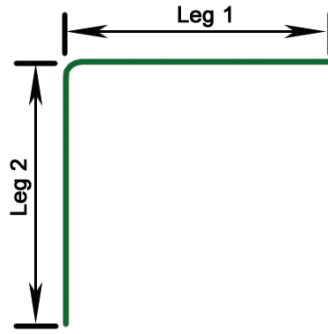


# Exterior Wall Framing & Accessories ThermaFast® Corner Angle Product Profile

## 200CA-54, 50 ksi

Leg Length  
CA  
ThermaFast® Corner Angle  
Material Thickness



### Material Properties

ASTM A1003/A1003M Structural Grade 50 (340) Type H, ST50H (ST340H): 50ksi (340MPa) minimum yield strength, 65ksi(450MPa) minimum tensile strength, with ASTM A653/A653M G90 (Z275) hot dipped galvanized coating. Available in 33mil minimum thickness (20 gauge, 0.0346" design thickness) or 54mil minimum thickness (16 gauge, 0.0566" design thickness).

ThermaFast® Corner Angle Product Profile						
Section	Leg Length	Gauge	Design Thickness	Min Steel Thickness	Inside Bend Radius	Unit Weight
	(in)	(ga)	(in)	(in)	(R)	(lbs/ft)
200CA-33, 50ksi	2.0	20	0.0346	0.0329	0.0764	0.45
200CA-54, 50ksi	2.0	16	0.0566	0.0538	0.0849	0.72

- Refer to project specification and/or architectural sections for wall assembly details related to fire and acoustical performance as well as water resistance.