



BEAST® DECK FOOT

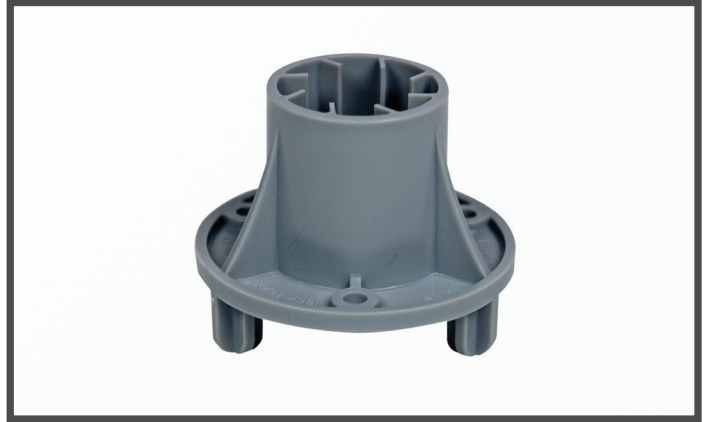
A STEGO INDUSTRIES, LLC INNOVATION | VERSION: JAN 28, 2025

1. PRODUCT NAME

BEAST DECK FOOT

2. MANUFACTURER

Stego Industries, LLC
216 Avenida Fabricante, Suite 101
San Clemente, CA 92672
Sales, Technical Assistance
Ph: (877) 464-7834
contact@stegoindustries.com
stegoindustries.com



3. PRODUCT DESCRIPTION

USES: Beast Deck Foot is designed to be substituted for Beast® Foot so concrete placement crews can utilize the Beast® Screed System on elevated deck pours. This allows concrete contractors the same advantages the Beast Screed System brings to slab-on-grade pours; a point-to-point guide screed system designed to replace common wet-screed methods, a visual fixed indicator to determine proper concrete depth while placing concrete, overall improved efficiency for the placement crew, and no more relying on undependable cow patties or wet pads.

COMPOSITION: Beast Deck Foot is one component of a 3-component screed system; Beast Screed. The system consists of Beast Deck Foot, Beast® Screed Post, and Beast® Screed Adjustable Cap. Beast Deck Foot and Beast Screed Adjustable Cap are made from 100% virgin polypropylene. Beast Screed Post is made from recycled and virgin polypropylene.

SIZE: Beast Deck Foot comes in boxes of 250 (10 bags of 25 components per box).

ENVIRONMENTAL FACTORS: Beast Deck Foot remains behind after Beast Screed Post and Beast Screed Adjustable Cap are retrieved for reuse.

4. TECHNICAL DATA

TABLE 1: PHYSICAL PROPERTIES OF BEAST DECK FOOT

PROPERTY	DATA
Beast Deck Foot Center Hub (Press-Fit)	Accepts Beast Screed Post or Beast Form Stake
Beast Deck Foot Center Hub Nail Hole	Accepts Self-Tapping Metal Screws, Wood Screws, and up to 16D Nails
Beast Deck Foot Perimeter Nail Holes (3)	Accepts up to 8D Lath or Duplex Nails
Weight	0.03 lb

Beast Deck Foot and Beast Screed Adjustable Cap are made from 100% virgin polypropylene. Beast Screed Post is made from recycled and virgin polypropylene.



Continued...

Note – legal notice on page 2.

BEAST® DECK FOOT

A STEGO INDUSTRIES, LLC INNOVATION | VERSION: JAN 28, 2025

5. INSTALLATION

- Determine where to locate Beast Screed based on the size bay (or strip) you desire.
- Attach Beast Deck Foot to the wood or metal deck by using a screw or nails through one or more of the pre-drilled holes.
- Cut the Beast Screed Post on the kerf line best suited for the designed depth of the slab.
- Attach Beast Screed Adjustable Cap to Beast Screed Post.
- Insert Beast Screed Post and Beast Screed Adjustable Cap into the press-fit center hub of Beast Deck Foot.
- Using a laser level and check rod or grade rod, rotate Beast Screed Adjustable Cap up or down to the proper elevation, or set Beast Screed Adjustable Cap for the desired depth of concrete you intend to pour.
- Once concrete is placed around Beast Screed, hand float a level pad around, and at the same elevation as Beast Screed, and use the pad as your elevation guide, or screed directly over the top of the Adjustable Cap.
- Following the final screed pass, remove Beast Screed Adjustable Cap and Beast Screed Post.

For additional information, please refer to Beast's complete installation instructions.

6. AVAILABILITY & COST

Beast Deck Foot is available through our network of building supply distributors. For current cost information, contact your local Beast® Concrete Accessories distributor or Stego® Sales Representative.

7. WARRANTY

Stego believes to the best of its knowledge, that specifications and recommendations herein are accurate and reliable. However, since site conditions are not within its control, Stego does not guarantee results from the use of the information provided and disclaims all liability from any loss or damage. NO WARRANTY, EXPRESS, IMPLIED OR STATUTORY, IS GIVEN AS TO THE MERCHANTABILITY, FITNESS FOR A PARTICULAR PURPOSE, OR OTHERWISE WITH RESPECT TO THE PRODUCTS REFERRED TO. Please see stegoindustries.com/legal

8. MAINTENANCE AND STORAGE

Maintenance: None required.

Storage and Handling: Store in cool, dry conditions.

Please refer to the Safety Data Sheet (SDS) for detailed safety, storage, and handling procedures.

9. TECHNICAL SERVICES

Technical advice, custom CAD drawings, and additional information can be obtained by contacting Stego or by visiting the website.

Email: contact@stegoindustries.com

Contact Number: (877) 464-7834

Website: stegoindustries.com

10. FILING SYSTEMS: stegoindustries.com

