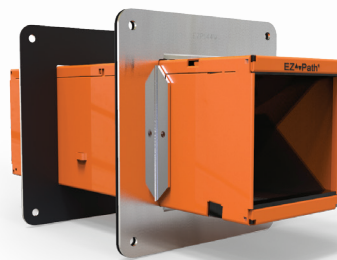


the
logical
choice.



EZ-Path[®]
Fire-Rated Pathway

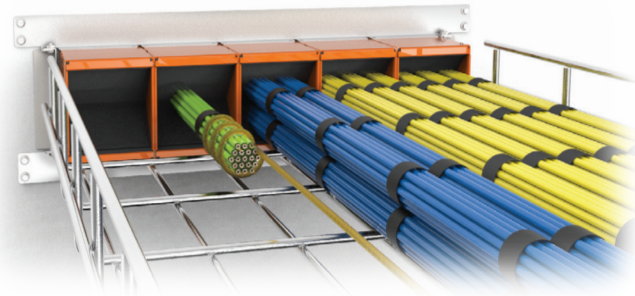
EZ-Path®

The Smart Choice.

EZ-Path® saves time, money, and resources by removing ongoing downstream costs.

Only EZ-Path® helps you avoid citations and costs associated with non-compliance. Other sleeves require constant upkeep, ongoing maintenance, and inspection to ensure compliance.

You can never be certain that other sleeves have been activated, plugs and putty have been replaced, or that they have been properly sealed to meet codes. And now that The Joint Commission **mandates 60 DAY RFIs** (Requirements for Improvement) for survey deficiencies— **ongoing code compliance is more important than ever.**



“Most cable penetrations were found to be out of compliance except for EZ-Path.”

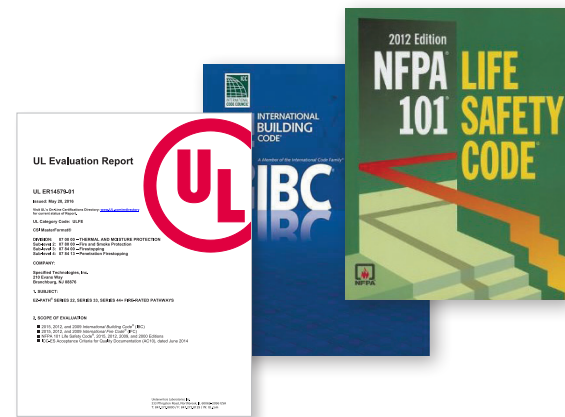
Global Fire Protection
Inspections Department

The Only Maintenance-Free Pathway.

Annual inspection and maintenance of firestop systems is required by code.

An Evaluation Service Report (ESR)* was issued on May 20, 2016 by UL® for EZ-Path® Fire-Rated Pathways confirming code compliance with the International Building Code® (IBC), International Fire Code® (IFC), and NFPA 101, “Life Safety Code®” (LSC). The report goes on to confirm that, when properly installed—**EZ-Path® Pathways are exempt from ongoing maintenance.**

Unlike other sleeves, **EZ-Path®** has no moving parts and requires no action to activate the internal sealing mechanism—making it **the only rated firestop device that is compliant right out of the box.**



EZ-Path® Fire-Rated Pathways do not require regular maintenance...

Evaluation Service Report
Underwriters Laboratory

*www.stifirestop.com/esr

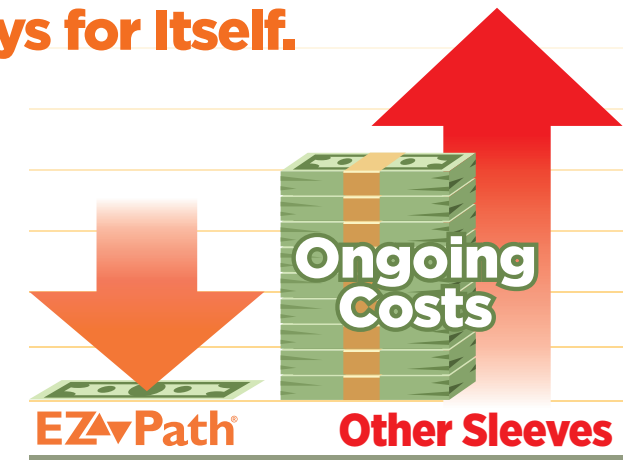


The Only Pathway that Pays for Itself.

Other sleeves incur enormous ongoing costs over the lifecycle of the building.

EZ-Path® offers the ultimate in flexibility and can virtually eliminate fines due to non-compliance, increasing your savings over and over again. **EZ-Path®** is a fully sustainable cable pathway solution for the lifetime of your building.

- ▶ Ends downstream maintenance & inspection costs
- ▶ Eliminates ongoing fire & smoke sealing costs
- ▶ Allows remote cable pulls through multiple barriers
- ▶ Reduces unnecessary trips above the ceiling
- ▶ Limits liability & decreases exposure to pathogens



“Over its lifecycle, EZ-Path® pays for itself many times over.”

Jeff Combs
Fire Marshal, Major U.S. Medical System

The Logical Solution for You.

For Contractors and Maintenance Professionals.

Concerns about failing inspections become a thing of the past with **EZ-Path®**. The system is easy to visually inspect and is ideal for both new construction and existing conditions.

For the Health Care Professional.

Infection control is paramount in healthcare facilities. **EZ-Path®** minimizes the spread of hospital-acquired infections (HAIs) by reducing or eliminating trips above the ceiling to unseal, reseal, or adjust equipment of any kind.

For the Owner.

EZ-Path® eliminates downstream labor costs with the use of pull strings inside the **EZ-Path®** devices, for easy cable MAC work from remote locations—saving you time and money over the life cycle of the building.

For Architects, Consultants, Specifiers, and RCDDs.

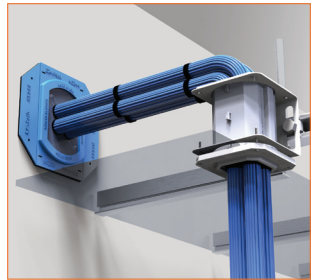
EZ-Path® provides you with a complete solution to help protect the legacy of your project. Whether it's the engineered aesthetics, the robust design, the dynamic features, the ability to “future-proof” the design, or the unparalleled performance— **EZ-Path®** has you covered.

For the Cable Installer and IT / ICT Professional.

Recognized as best practice by trade professionals, **EZ-Path®** protects your network. Maintain compliance while navigating the demands of perpetually evolving floor, wall, and ceiling penetrations that result from equipment expansions and technology upgrades. Easy to install with nothing to maintain, **EZ-Path®** lets you execute continuous cable pulls while allowing your network to run at peak performance.

EZ-Path® The applications:

Scan to learn more about the EZ-Path® System ▶



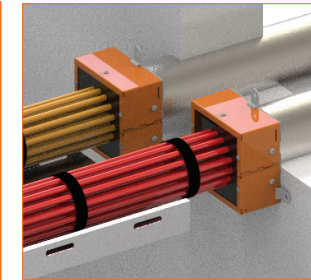
Smoke & acoustical pathway
For non-fire-rated walls



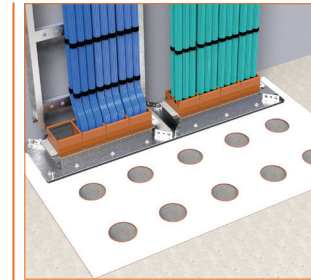
Grommets
For single-cable applications



EZ-Path multigang solutions
For space-saving vertical & horizontal applications



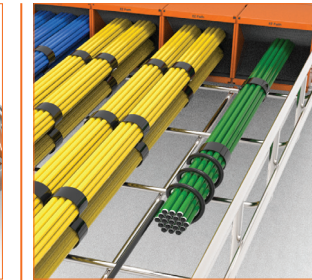
EZDR Retrofit Device
For overfilled sleeves



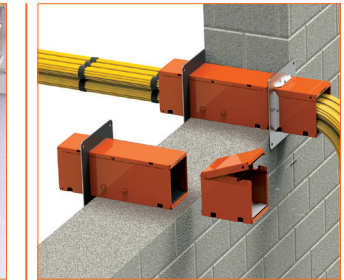
Smaller footprint
For greater cable capacity compared to traditional methods



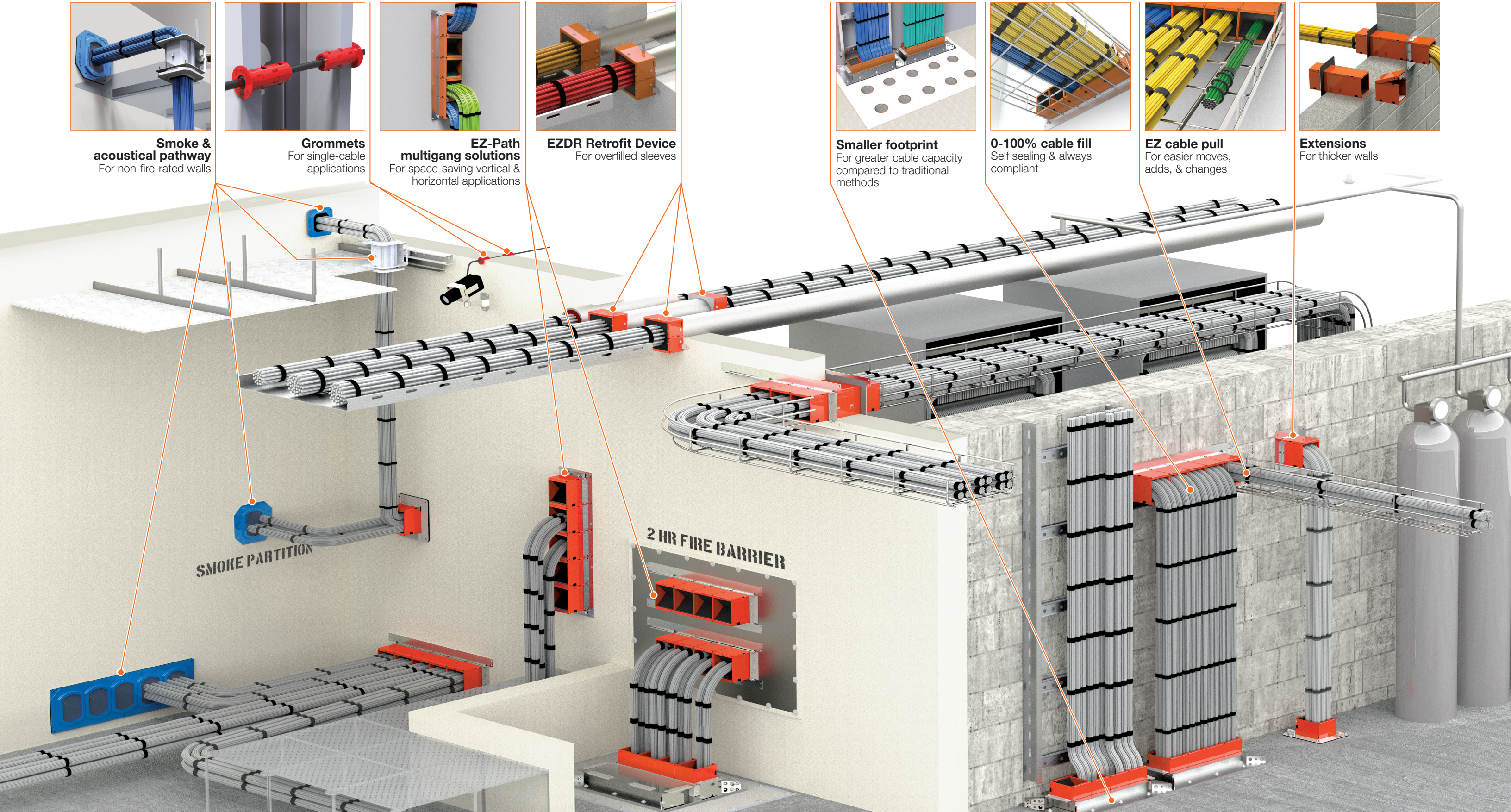
0-100% cable fill
Self sealing & always compliant







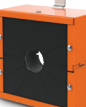





EZ cable pull
For easier moves, adds, & changes



Extensions
For thicker walls



EZ-Path® Specifications

EZ-Path Product	Height x Width Inches (mm)	Length Inches (mm)	Volume Expansion	Can be Ganged	Can be Lengthened	Insert into Cored Hole	Attached to Conduit	Fire Rating in Walls	Fire Rating in Floors
 RFG1	9/16 in. diam. (14 mm)	1-5/8 in. (41.3 mm)	-	-	-	9/16 in. (14 mm)	-	Up to 2 hours	-
 RFG2	1 in. diam. (25 mm)	1-5/8 in. (41.3 mm)	-	-	-	1 in. (25 mm)	-	Up to 2 hours	-
 Series 22	1-1/2 in. x 1-1/2 in. (38 mm x 38 mm)	10-1/2 in. (267 mm)	30X	-	-	2 in. (51 mm)	-	Up to 4 hours	Up to 4 hours
 EZDR200	3-1/2 in. x *4-1/8 in. (89 mm x 105 mm)	2-3/4 in. (70 mm)	24X to 48X	-	-	2 in. (2-3/16 in. or 2-3/8 in. O.D.) Sleeves	YES	Up to 2 hours	Up to 2 hours
 EZDR400	5-1/2 in. x 16-1/4 in.	2-3/4 in. (70 mm)	24X to 48X	-	-	6 in. (152 mm) increments	YES	Up to 2 hours	Up to 2 hours
 Series 33	3 in. x 3 in. (76 mm x 76 mm)	10-1/2 in. (267 mm)	15X	Up to 7 in walls	6 in. (152 mm) increments	4 in. (102 mm)	4 in. (102 mm)	Up to 4 hours	Up to 4 hours
 Series 44+	4 in. x 4-5/8 in. (102 mm x 118 mm)	14 in. (356 mm)	15X	Up to 5 in walls Up to 16 in floors	6 in. (152 mm) increments	6 in. (152 mm)	-	Up to 4 hours	Up to 4 hours
 Series 44NEZ	7-1/2 in. x 7-1/8 in. (191 mm x 181 mm)	24 in. to 8 in. (102 mm to 203 mm)	-	Up to 5 in walls	-	6 in. (152 mm)	-	Not Rated	Not Rated
 Series 33NEZ	5 in. x 5 in. (flange) (127 mm x 127 mm)	24 in. to 8 in. (102 mm to 203 mm)	-	Up to 4 in walls	-	4 in. (102 mm)	-	Not Rated	Not Rated
 Series 33NEZ Ceiling	5 in. x 5 in. (flange) (127 mm x 127 mm)	5 in. overall 24-3/8 in. (127 mm) (111 mm)	-	-	-	4 in. (102 mm)	-	Not Rated	Not Rated

1 EZDR 400 width includes locking tab. Device can be rotated to any orientation. (i.e.: 6-1/4 in. H x 5-1/2 in. W)
 2 NEZ33 fits walls 4 in. to 8 in. in width.
 3 NEZ33CK2 dimension measured from bottom of steel plate abutting unexposed ceiling to top of device.



Scan to learn more about the EZ-Path® System ▶

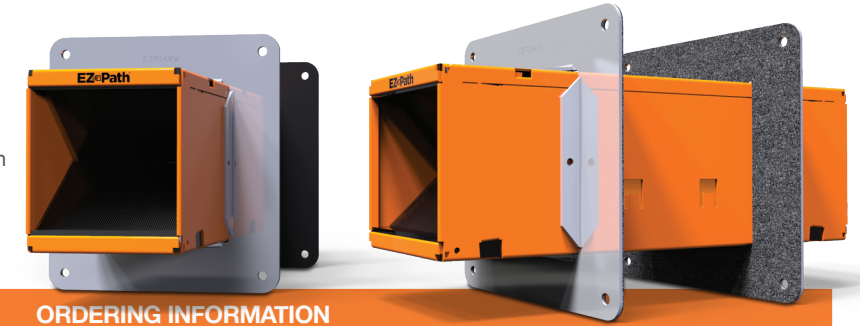












Series 44+ Fire-Rated Pathway

The EZ-Path® Series 44+ Fire-Rated Pathway is a maintenance-free pathway solution designed for high cable volume conditions through fire-rated walls and floors. The Series 44+ incorporates self-sealing intumescent pads that automatically adjust to the installed cable fill without the need for user manipulation. Under fire exposure, the intumescent pads expand and swell, resisting the passage of smoke and flame.

Features & Benefits:


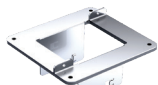
- Self Sealing design provides exceptional fire and smoke leakage ratings
- Allows for easy moves, adds, and changes
- Designed for new and existing conditions
- Variety of accessories available for any field condition
- Modular grid system for riser applications
- Greatest achievable cable density of any solution on the market





Single Device		ORDERING INFORMATION					
Catalog Number	UPC Number	Description	(UOM Qty.)	Case Qty.	Weight (Each)	Device	
EZD44S2	730573001004	Fire-Rated Pathway Device	1	4	5.56 lbs (2.52 kg)	 EZD44S2	
Single Pathway Installation Through Walls							
EZDP44S2	730573001066	Fire-Rated Pathway Kit – Device with wall plates and labels	1	1	7.92 lbs (3.59 kg)	 EZDP44S2 Full kit	
EZP144W	730573001448	Single Wall Plates and Labels	1	1	5.27 lbs (2.39 kg)	 EZP144W Without pathway	
Single Pathway Installation Through Walls With Existing Cables							
EZDP144RS2	730573001073	Split Wall Plate – Device with split wall plate and labels	1	1	8.17 lbs (3.70 kg)	 EZDP144RS2 Full kit	
EZP144RS	730573001486	Split Wall Plate – Plate only	1	1	2.42 lbs (1.10 kg)	 EZP144RS Without pathway	
Single Pathway Installation Through Walls With Existing Cables							
EZP544W	730573005446	Multi-gang wall plate brackets for 1-5 devices. Devices not included.	1	1	3.91 lbs (1.77 kg)	 EZP544W	
EZP544WD	730573005460	Multi-gang wall plate brackets for 2-10 devices. Devices not included.	1	8	4.00 lbs (1.81 kg)	 EZP544WD	
EZP644W	730573006481	Multi-gang wall plate brackets for 12 devices. Devices not included.	1	8	4.40 lbs (1.99 kg)	 EZP644W	
EZP644WD	730573006573	Multi-gang wall plate brackets for 1-5 devices. Devices not included.	1	1	4.80 lbs (2.18 kg)	 EZP644WD	
EZP544WV	730573005477	Vertical Multi-Gang Wall Bracket Kit for 1-5 devices. Devices not included.	1	1	7.00 lbs (3.18 kg)	 EZP544WV	

Series 44+ Fire-Rated Pathway



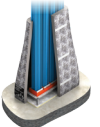
Vertical Cable Solutions

Single Pathway Installation Through Floors						ORDERING INFORMATION	
Catalog Number	UPC Number	Description	(UOM) Qty.	Case Qty.	Weight (Each)	Device	
EZDP144FKS2	730573001080	Floor Kit – Device with floor plate	1	1	7.32 lbs (3.32 kg)	 EZDP144FKS2 Full kit	 EZP144F Without pathway
EZP144F	730573008348	Split Floor Plate – Plate only	1	1	1.50 lbs (0.68 kg)		

Specialty Options

Extension Module						ORDERING INFORMATION	
Catalog Number	UPC Number	Description	(UOM) Qty.	Case Qty.	Weight (Each)	Device	
EZD44ES	730573000694	6" Extension Module – use with Series 44+ pathway ONLY	1	1	2.44 lbs (1.11 kg)	EZD44ES	
Radius Control Extension Module							
EZRCM44S	730573009345	Radius Control Module – one pair (2) for use with Series 44+ pathway ONLY	1	4	0.12 lbs (0.05 kg)	EZRCM44S	

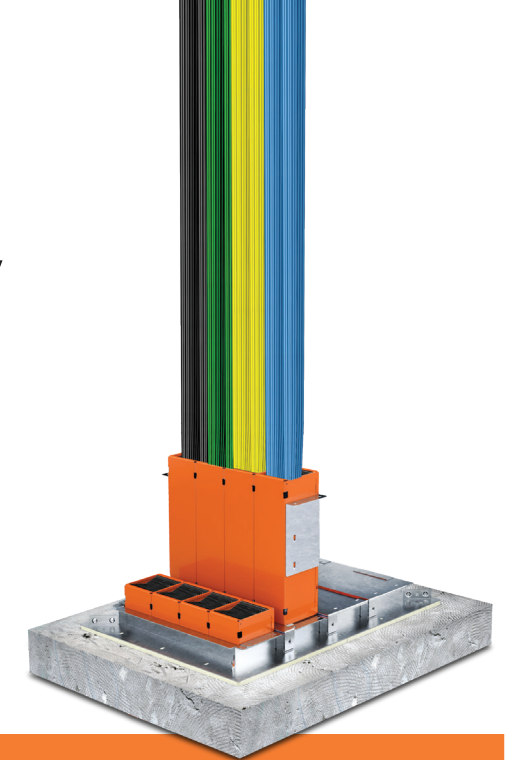
Vertical Specialty Options

Hanger Bracket						ORDERING INFORMATION	
Catalog Number	UPC Number	Description	(UOM) Qty.	Case Qty.	Weight (Each)	Device	
EZP444MB	730573004487	Hanger Bracket for Modular Floor Grid System	1	1	1.30 lbs (0.59 kg)	EZP444MB	
Pathway Module							
EZD444MBS2	730573001097	Single Bank of Devices – Four (4) Devices with hanger bracket	1	1	23.37 lbs (10.60 kg)	EZD444MBS2	
T-Rating Kit							
TRK444	730573004463	T-Rating Kit	1	1	15.36 lbs (6.97 kg)	TRK444	

Series 44+ Fire-Rated Pathway

Modular Floor Grid System

Modular Floor Grid Systems utilize the high volume, EZ-Path® Series 44+ pathways, installed in banks of four, to provide your cabling systems with room to grow. Sturdy steel grids mount one, two, or four banks of pathways in built-in slots for a total of up to sixteen pathways through a single floor opening. A single bank floor grid comes complete with pathways. Multi-bank modular floor grids are installed with firestop panels sealing each slot. As additional cable capacity is required, firestop panels are removed, and pathway modules containing four pathways are installed in each slot.



Single-Slot Modular Floor Grid						ORDERING INFORMATION	
Catalog Number	UPC Number	Description	(UOM) Qty.	Case Qty.	Weight (Each)	Device	
EZDG444S2	730573001103	Single Bank Floor Grid – Four (4) Devices with floor frame	1	1	37.40 lbs (16.96 kg)	 EZDG444S2 Full kit	 EZG444 Without pathway
EZD44S2	730573001004	Fire-Rated Pathway Device	1	1	5.56 lbs (2.52 kg)		
Two-Slot Modular Floor Grid							
EZDG844S2	730573001110	Dual-slot Frame Kit with 8 Pathways – (Includes eight (8) Series 44+ devices with EZG844)	1	1	65.86 lbs (29.87 kg)	 EZDG844S2 Full kit	 EZG844 Without pathway
EZG844	730573008447	Dual-Slot Frame for Eight (8) Pathways	1	1	16.25 lbs (7.37 kg)		
Four-Slot Modular Floor Grid							
EZDG1644S2	730573001127	Quad-slot Frame Kit with 16 Pathways – (Includes sixteen (16) Series 44+ devices with EZG1644)	1	1	-----	 EZDG1644S2 Full kit	 EZG1644 Without pathway
EZG1644	730573006443	Multi-Slot Frame for Sixteen (16) Pathways	1	1	26.59 lbs (12.06 kg)		
Splice Plate Kit							
EZG444CP	730573004494	Floor Grid Splice Plate Kit – includes plate and gasket	1	1	2.11 lbs (0.95 kg)		

Scan to learn more about the EZ-Path® System ▶



Series 33 Fire-Rated Pathway


The EZ-Path® Series 33 Fire-Rated Pathway is a maintenance-free pathway solution for moderate cable volumes through fire-rated walls and floors. The Series 33 incorporates built-in intumescent pads that automatically adjust to cable fills. When exposed to flame and high temperatures, the intumescent pads expand to form a dense insulative char that prevents the passage of smoke and flame.

Features & Benefits:


- Self Sealing design provides exceptional fire and smoke leakage ratings
- Allows for easy moves, adds, and changes
- Designed for new and existing conditions
- Variety of accessories available for any field condition
- Available in an array of colors for easy cable pathway management





Single Device ORDERING INFORMATION

Catalog Number	UPC Number	Description	(UOM) Qty.	Case Qty.	Weight (Each)	Device
EZD33FWS	730573000045	Fire-Rated Pathway Device	1	6	2.70 lbs (1.22 kg)	

Single Pathway Square Plate Kit



EZDP33FWS	730573000342	Square Plate Kit – Device with square wall plates and labels	1	4	3.52 lbs (1.60 kg)		
EZP133W	730573001332	Square Wall Plates with labels	1	1	0.81 lbs (0.37 kg)		

Single Pathway Circular Plate Kit



EZDP133CWK	730573000359	Circular Plate Kit – Device with circular wall plates and labels	1	1	3.83 lbs (1.74 kg)		
EZP133CW	730573001370	Circular Wall Plates with labels	1	1	0.82 lbs (0.37 kg)		

Multi-Gang Plates

Two Gang ORDERING INFORMATION

EZDP233GK	730573002353	Two-Gang Kit – Two (2) devices with two-gang plates and labels	1	1	6.48 lbs (2.94 kg)		
EZP233W	730573002339	Two-Gang Wall Plates with labels	1	1	0.79 lbs (0.36 kg)		

Three Gang



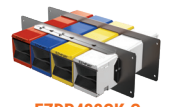
EZDP333GK	730573903353	Three-Gang Kit – Three (3) devices with three-gang plates and labels	1	1	9.10 lbs (4.13 kg)		
EZP333W	30573003336	Three-Gang Wall Plates and labels	1	1	1.03 lbs (0.47 kg)		

Series 33 Fire-Rated Pathway



Multi-Gang Plates continued



Four Gang ORDERING INFORMATION



Catalog Number	UPC Number	Description	(UOM) Qty.	Case Qty.	Weight (Each)	Device		
EZDP433GK	730573004357	Four-Gang Kit – Four (4) devices with four-gang plates and labels	1	1	13.06 lbs (5.92 kg)			
EZP433W	730573004333	Four-Gang Wall Plates and labels	1	1	1.73 lbs (0.78 kg)			
EZDP433GK-C	730573004357	Color Coded Four-Gang Kit Four (4) Devices (1-orange, 1-blue, 1-yellow, 1-white) with four-gang plates and labels	1	1	0.79 lbs (0.36 kg)			

Seven Gang



EZDP733GK	730573007358	Seven-Gang Kit – Seven (7) devices with seven-gang plates and labels	1	1	21.82 lbs (9.90 kg)		
EZP733W	730573007334	Seven-Gang Wall Plates and labels	1	1	2.66 lbs (1.21 kg)		

Specialty Options



New Cable Installations Through Floors ORDERING INFORMATION

Catalog Number	UPC Number	Description	(UOM) Qty.	Case Qty.	Weight (Each)	Device	
EZDP133FK	730573008355	Kick in Floor Plate Kit – Device with split floor plate	1	1	3.53 lbs (1.60 kg)		
EZP133K	730573008331	Kick-In Split Floor Plate	1	6	0.71 lbs (0.32 kg)		



Conduit Attachment

EZDP133CAK	730573000366	Conduit Attachment Kit-Device with conduit attachment plate and label	1	1	4.05 lbs (1.84 kg)		
EZP133CA	730573001387	Conduit Attachment Plate with label	1	1	0.86 lbs (0.39 kg)		


Retro-Fit

EZDP33WR	730573005330	Retro-Fit Kit – Device with retro-fit wall mounting plates and labels	1	1	6.63 lbs (3.01 kg)		
EZP133R	730573005354	Retro-Fit Mounting Plates with labels	1	1	3.57 lbs (1.62 kg)		


Extension Module

EZD33E	730573000052	Extension Module	1	1	1.63 lbs (0.74 kg)		
--------	--------------	------------------	---	---	--------------------	---	---

Positioning Clamp

EZP133PC	730573001356	One Pair (2) Positioning Clamps	1	1	0.20 lbs (0.09 kg)		
----------	--------------	---------------------------------	---	---	--------------------	---	--

Radius Control Module

RCM33	730573009338	One Pair (2) Radius Control Modules	1	1	0.05 lbs (0.02 kg)		
-------	--------------	-------------------------------------	---	---	--------------------	---	--

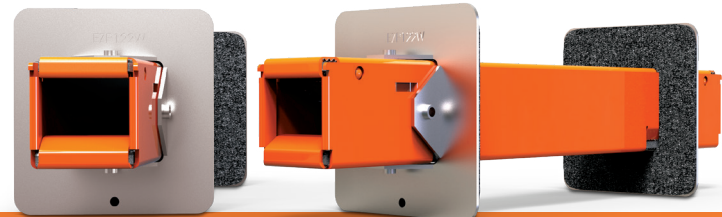


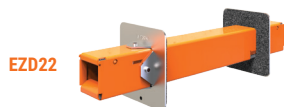
Series 22 Fire-Rated Pathway

The **EZ-Path® Series 22 Fire-Rated Pathway** is a maintenance-free pathway solution for smaller cable bundles through fire-rated wall assemblies. The device is offered as a complete kit without the need for additional accessory products for installation.

Features & Benefits:

- Self Sealing design provides exceptional fire and smoke leakage ratings
- Allows for easy moves, adds, and changes
- Designed for new and existing conditions
- Suited for round and rectangular openings



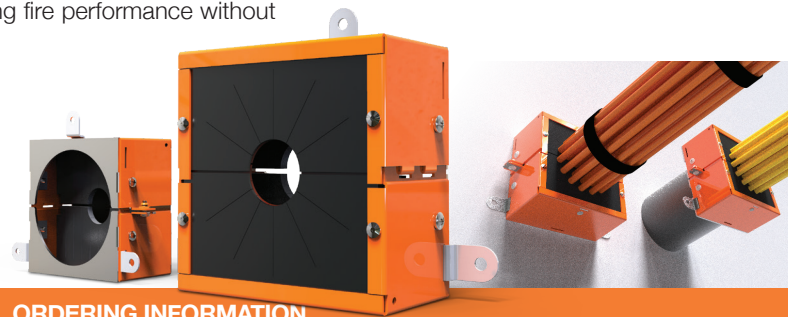
Single Device		ORDERING INFORMATION					Device
Catalog Number	UPC Number	Description	(UOM) Qty.	Case Qty.	Weight (Each)		
EZD22	730573000229	Device, full kit includes wall plates and labels	1	6	1.91 lbs (0.86 kg)		





Retrofit Device

Overfilled cable sleeves are the bane of every facilities team. Bring these deficient openings back into code compliance with the **EZ-Path® Retrofit Device**. Its two-part clam shell design installs around projecting sleeves and cable bundles, restoring fire and smoke leakage performance. The EZ-Path® Retrofit Device quickly and easily retrofits sleeves of up to 100% visual fill, restoring fire performance without the need for additional firestop products.

Features & Benefits:

- Sized for 2 in. and 4 in. metallic sleeves
- Designed for cable sleeves and stubs
- Professional fit and finish
- Safety Orange for easy identification
- Suited for round and rectangular openings



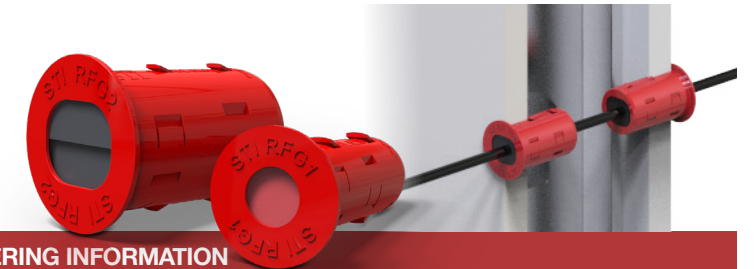
Single Device		ORDERING INFORMATION					Device
Catalog Number	UPC Number	Description	(UOM) Qty.	Case Qty.	Weight (Each)		
EZDR200	730573002001	Retrofit Device for 2" (2-3/16" or 2-3/8" O.D.) Sleeves, One Pair (2)	1	4	2.83 lbs (1.28 kg)		
EZDR400	730573004005	Retrofit Device for 4" (4-1/2" O.D.) Sleeves, One Pair (2)	1	4	4.81 lbs (2.18 kg)		
EZPR150	730573002018	1-1/2" Adapter Plate for EZDR200, One Pair (2)	1	1	0.75 lbs (0.34 kg)		
EZPR300	730573004012	3" Adapter Plate for EZDR400, One Pair (2)	1	1	1.25 lbs (0.57 kg)		



EZ-Firestop® Grommet

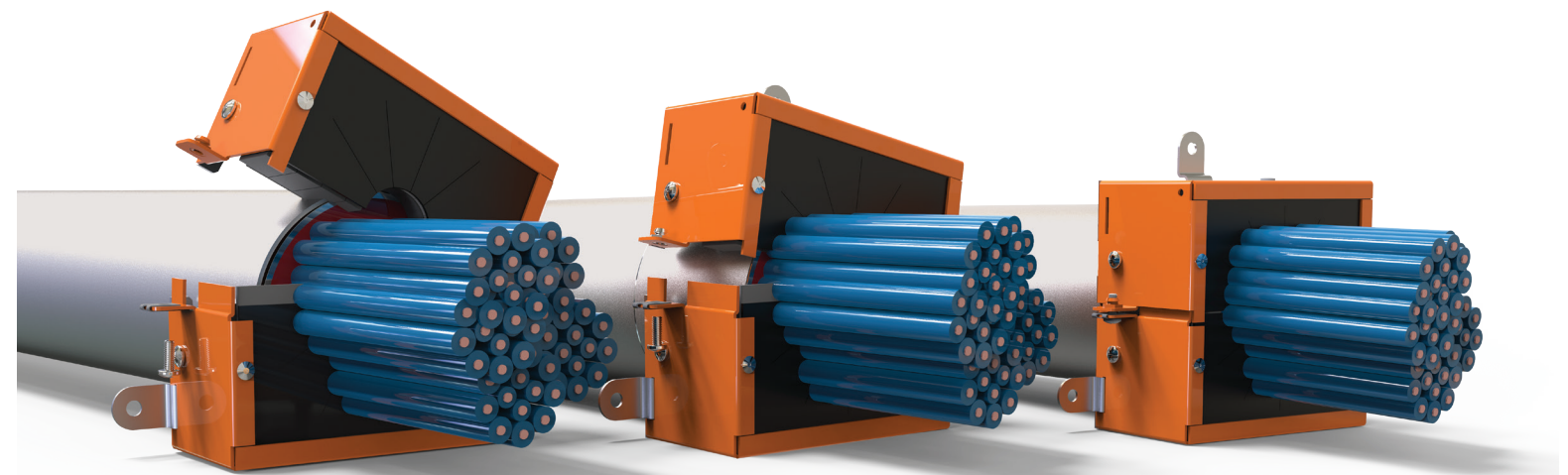
EZ-Firestop® Grommets make sealing penetrations of individual and small bundles of cables through gypsum board walls a snap. Molded from premium plenum-plastics and incorporating a soft foam inner core, EZ-Firestop® Grommets eliminate the need for sleeves, firestop putties, and sealants.

Features & Benefits:

- Suited for addressing single membrane or complete through-penetrations
- Available as a single cable or multiple cable solution
- Ideal for alarm, security, or wireless access point installations
- Designed for 1 & 2 hr fire-rated gypsum board wall assemblies
- Professional finished appearance

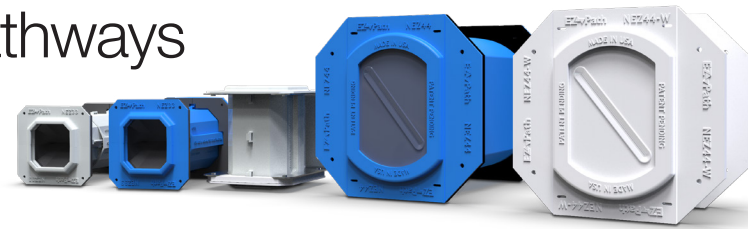


Firestop Grommets		ORDERING INFORMATION					Device
Catalog Number	UPC Number	Description	(UOM) Qty.	Case Qty.	Weight (Each)		
RFG1	730573250587	Two-piece split cable grommet for single cable penetrations up to 0.27" (7 mm) diameter	1 Pack 10 Grommets per pack	10 Packs	0.21 lbs (0.10 kg)		
RFG2	730573250594	Two-piece split cable grommet for single or multiple cable penetrations up to 0.53" (14 mm) diameter	1 Pack 10 Grommets per pack	10 Packs	0.40 lbs (0.18 kg)		

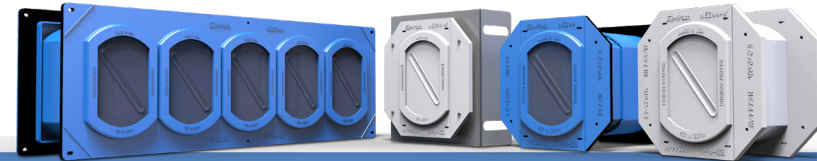


Smoke & Acoustical Pathways

Designed for easy installation in non-fire-rated floor, ceilings, and walls, EZ-Path® Series 33NEZ & 44NEZ Smoke & Acoustical Pathways provide exceptional cable capacity with tested and approved cable capacities ranging from 0 up to 100% visual fill.




Series 44NEZ

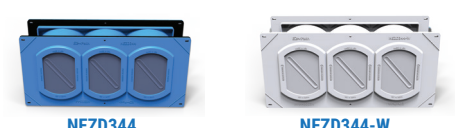


Single Device for Walls and Floors


ORDERING INFORMATION

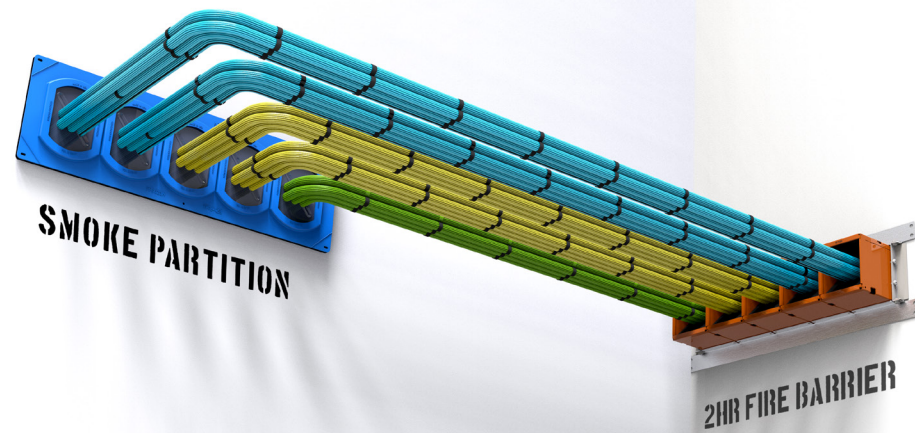
Catalog Number	UPC Number	Description	(UOM Qty.)	Case Qty.	Weight (Each)	Device
NEZ44	730573111727	Smoke and Acoustical Pathway (Blue)	1	4	1.92 lbs (0.89 kg)	
NEZ44-W	730573111734	Smoke and Acoustical Pathway (White)	1	4	1.92 lbs (0.89 kg)	

3 & 5 Gang Devices for Walls and Floors

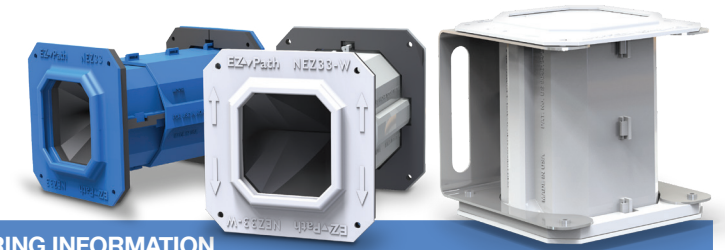
NEZD344	730573111772	Smoke and Acoustical Pathway 3-Gang Kit (Blue) [16" (406mm) Wall Studs]	1	1	5.27 lbs (2.39 kg)	
NEZD344-W	730573111789	Smoke and Acoustical Pathway 3-Gang Kit (White) [16" (406mm) Wall Studs]	1	1	5.27 lbs (2.39 kg)	
NEZD544	730573111796	Smoke and Acoustical Pathway 5-Gang Kit (Blue) [24" (610mm) Wall Studs]	1	1	7.94 lbs (3.60 kg)	
NEZD544-W	730573111802	Smoke and Acoustical Pathway 5-Gang Kit (White) [24" (610mm) Wall Studs]	1	1	7.94 lbs (3.60 kg)	

Non-Fire-Rated Ceiling Kits

NEZ44CK	730573111741	Smoke and Acoustical Pathway Ceiling Kit (White)	1	4	1.95 lbs (4.23 kg)	
NEZ344CK	730573111819	Smoke and Acoustical Pathway 3-Gang Ceiling Kit (White)	1	4	1.95 lbs (4.23 kg)	




Series 33NEZ







Single Device for Walls and Floors


ORDERING INFORMATION

Catalog Number	UPC Number	Description	(UOM Qty.)	Case Qty.	Weight (Each)	Device
NEZ33	730573111581	Smoke and Acoustical Pathway, (Device Only) with hardware	1	4	1.27 lbs (0.57 kg)	
NEZ33-W	730573111666	Smoke and Acoustical Pathway White, (Device Only) with hardware	1	4	1.27 lbs (0.58 kg)	


3 & 5 Gang Devices for Walls and Floors

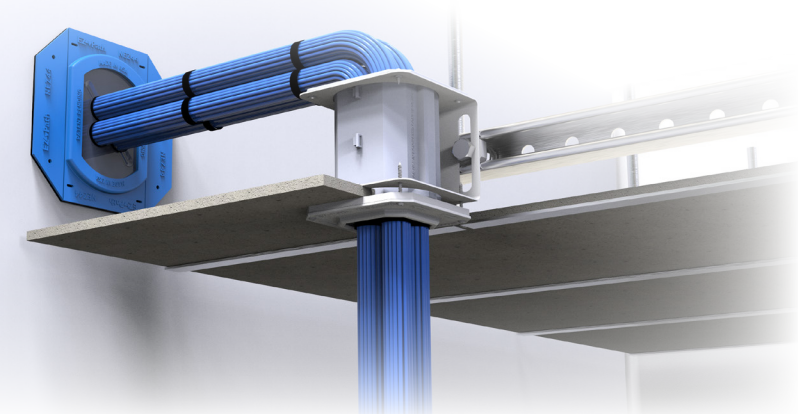
NEZDP233	730573111598	Smoke and Acoustical Pathway, Two Gang Kit (2 NEZ33 Pathways & 2 NEZP233 Two Gang Plates)	1	N/A	3.67 lbs (1.66 kg)	
NEZDP433	730573111604	Smoke and Acoustical Pathway, Four Gang Kit (4 NEZ33 Pathways & 2 NEZP433 Four Gang Plates)	1	N/A	6.27 lbs (2.84 kg)	
NEZP233	730573111611	Smoke and Acoustical Pathway, Two Gang Plate Kit (Plates Only)	1	N/A	0.91 lbs (0.41 kg)	
NEZP433	730573111628	Smoke and Acoustical Pathway, Four Gang Plate Kit (Plates Only)	1	N/A	6.27 lbs (2.84 kg)	

Retrofit Device

NEZ33R	730573111659	Smoke & Acoustical Pathway Retrofit Device	2	2	1.08 lbs (0.49 kg)	
--------	--------------	--	---	---	--------------------	---

Non-Fire-Rated Ceiling Kits

NEZ33CK2	730573111680	Smoke and Acoustical Pathway White, (Device Only) with Ceiling Kit	1	1	1.89 lbs (0.86 kg)	
----------	--------------	--	---	---	--------------------	---



EZPath® Notable Projects

- ▶ Akron Childrens
- ▶ Akron General
- ▶ Amazon
Fort Myers, FL
- ▶ Avida Assisted Living
Fort Myers, FL
- ▶ Bank of America
New York City, NY
- ▶ Banner Phoenix Medical Center
- ▶ Barings Project
Charlotte, NC
- ▶ Baylor Hospital
Grapevine, TX
- ▶ Baylor Hospital
Marble Falls TX
- ▶ Baylor Hospital
Waco, TX
- ▶ BJC Downtown Campus
- ▶ Boiling Springs High School
Boiling Springs, SC
- ▶ Carolinas Healthcare Systems
Charlotte, NC
- ▶ Catawba Ridge High School
Monroe, NC
- ▶ Cleveland Clinic Cancer Center
- ▶ Children's Healthcare of Atlanta
Atlanta, GA
- ▶ Children's Hospital of Colorado
- ▶ Choctaw Casino
Durant OK
- ▶ Choctaw Regional Hospital
Ada OK
- ▶ Cleveland Clinic – Avon Facility
- ▶ Cleveland Clinic Office Building
Coconut Creek, FL
- ▶ Cleveland Clinic
Weston, FL
- ▶ Comcast Tower
Philadelphia, PA
- ▶ Community Health
- ▶ Detroit Med Center – Childrens
- ▶ DHR Healthcare System
McAllen, TX
- ▶ East County Detention Center
Riverside, CA
- ▶ Facebook
- ▶ Facebook Data Center
Forest City, NC
- ▶ Facebook Data Center
Maiden, NC
- ▶ Face Book
Ft Worth, TX
- ▶ Ford Motor Company
- ▶ Fort Bliss Medical Center
El Paso, TX
- ▶ Kaiser San Diego
- ▶ Kaiser Santa Rosa
- ▶ Franciscan Health – St Anthonys
- ▶ Franciscan – St. James
- ▶ Google Data Center
Atlanta, GA
- ▶ Health South Headquarters
Birmingham, AL
- ▶ Hillcrest Hospital System
Tulsa, OK
- ▶ Hudson Yards Time Warner
New York City
- ▶ Indian Health Services
- ▶ International Hotel Group
Dunwoody, GA
- ▶ Iowa Childrens
- ▶ Lake Forest Hospital
- ▶ Lakeland Regional Healthcare
Lakeland, FL
- ▶ Lash Kingsley Project
Charlotte, NC
- ▶ Lee Health
Fort Myers, FL
- ▶ Lee Memorial Hospital
Fort Myers, FL
- ▶ Lexington Medical Center
West Columbia, SC
- ▶ Market Tower
- ▶ Martin Memorial
Port St. Lucie, FL
- ▶ Mayo Clinic
Jacksonville, FL
- ▶ Medical City
Plano, TX
- ▶ Memorial Sloan Hospital
New York City
- ▶ Mercy – Jeff County
- ▶ Mercy Rockford
- ▶ MicroSoft
- ▶ Microsoft Data Center
Washington DC
- ▶ Midland Memorial Hospital
Midland, TX
- ▶ Mt. Sinai MRI Suite
Miami, FL
- ▶ NASA Corporate Headquarter Complex,
Kennedy Space Center
- ▶ Nationwide Childrens
- ▶ Navy Federal Credit Union
Pensacola, FL
- ▶ NCAA Data Center
Pell City, AL
- ▶ Norman Regional Hospital
Moore, OK
- ▶ Novant Health
Charlotte, NC
- ▶ Oregon Health and Science University
- ▶ Orlando Police Department
Orlando, FL
- ▶ OSF St Francis
- ▶ Parkland Hospital
Dallas, TX
- ▶ Port Huron Med Center
- ▶ PSU – Behren Hall
- ▶ Rapid City Regional
- ▶ Research Hospital
- ▶ Rex Hospital
Raleigh, NC
- ▶ Riverside Methodist Tower
- ▶ Sanford Medical
- ▶ Sarasota Air Traffic Control
Sarasota, FL
- ▶ Shands Hospital
Gainesville, FL
- ▶ Sheriff Office Complex
Sebring, FL
- ▶ Stanford Medical Center
- ▶ State Farm Corporate Center
Atlanta, GA
- ▶ State Farm
Dallas, TX
- ▶ St Elizabeth
- ▶ St. Francis Medical Center
Denver, CO
- ▶ St John's Hospital
Tulsa, OK
- ▶ St. Vincent's Hospital
Birmingham, AL
- ▶ Sutter Cathedral Hill
- ▶ Tesla Manufacturing Plant
Reno, NV
- ▶ Texas Tech University
Lubbock TX
- ▶ Texoma Regional Hospital
Sherman, TX
- ▶ Toyota Headquarters
Plano, TX
- ▶ University of Colorado Health
Longs Peak Hospital
- ▶ University of Miami Medical Center
Miami, FL
- ▶ University of North Florida,
Skinner Hall
- ▶ University of Tennessee Dormitory
Knoxville, TN
- ▶ University of Tennessee Medical Ctr.
Knoxville, TN
- ▶ U of Cincinnati Tower
- ▶ U of NE Med Center
- ▶ Utah Valley Regional Medical Center
- ▶ UT Southwest Medical
Dallas, TX
- ▶ Via Christi
- ▶ Wells Fargo, Charlotte, NC
- ▶ World Trade Center Tower 1
New York City, NY