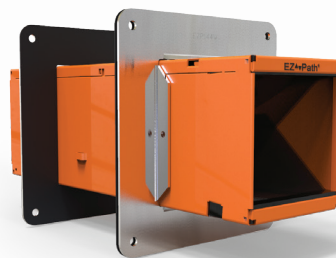


**the**  
**logical**  
**choice.**



**EZ-Path®**  
Fire-Rated Pathway

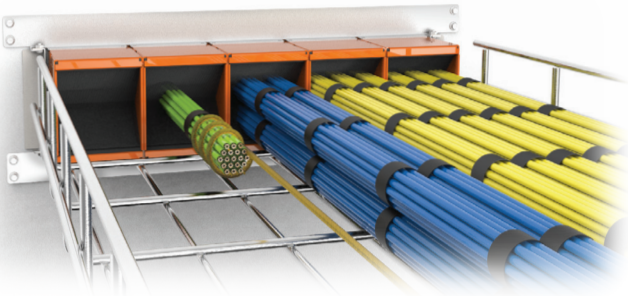
# EZ-Path®

## The Smart Choice.

EZ-Path® saves time, money, and resources by removing ongoing downstream costs.

Only EZ-Path® helps you avoid citations and costs associated with non-compliance. Other sleeves require constant upkeep, ongoing maintenance, and inspection to ensure compliance.

You can never be certain that other sleeves have been activated, plugs and putty have been replaced, or that they have been properly sealed to meet codes. And now that The Joint Commission mandates 60 DAY RFIs (Requirements for Improvement) for survey deficiencies—ongoing code compliance is more important than ever.



“Most cable penetrations were found to be out of compliance except for EZ-Path.”

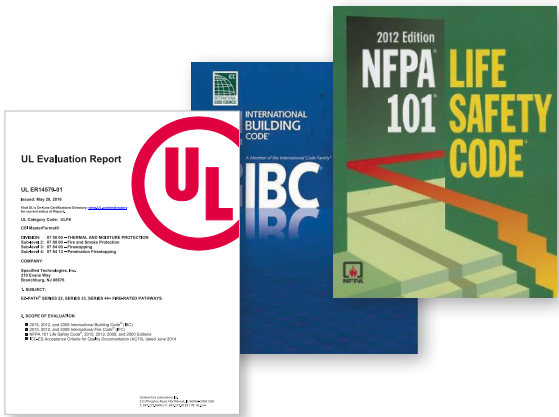
Global Fire Protection  
Inspections Department

## The Only Maintenance-Free Pathway.

Annual inspection and maintenance of firestop systems is required by code.

An Evaluation Service Report (ESR)\* was issued on May 20, 2016 by UL® for EZ-Path® Fire-Rated Pathways confirming code compliance with the International Building Code® (IBC), International Fire Code® (IFC), and NFPA 101, “Life Safety Code®” (LSC). The report goes on to confirm that, when properly installed—EZ-Path® Pathways are exempt from ongoing maintenance.

Unlike other sleeves, EZ-Path® has no moving parts and requires no action to activate the internal sealing mechanism—making it the **only** rated firestop device that is compliant right out of the box.



EZ-Path® Fire-Rated Pathways do not require regular maintenance...

Evaluation Service Report  
Underwriters Laboratory

\*www.stifirestop.com/esr

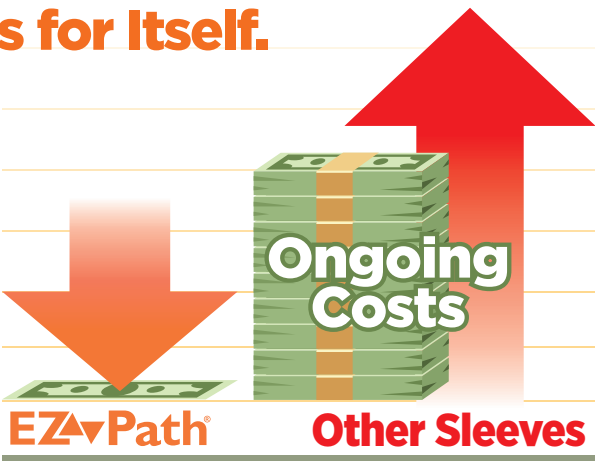


## The Only Pathway that Pays for Itself.

Other sleeves incur enormous ongoing costs over the lifecycle of the building.

EZ-Path® offers the ultimate in flexibility and can virtually eliminate fines due to non-compliance, increasing your savings over and over again. EZ-Path® is a fully sustainable cable pathway solution for the lifetime of your building.

- ▶ Ends downstream maintenance & inspection costs
- ▶ Eliminates ongoing fire & smoke sealing costs
- ▶ Allows remote cable pulls through multiple barriers
- ▶ Reduces unnecessary trips above the ceiling
- ▶ Limits liability & decreases exposure to pathogens



“Over its lifecycle, EZ-Path® pays for itself many times over.”

Jeff Combs  
Fire Marshal, Major U.S. Medical System

## The Logical Solution for You.

For Contractors and Maintenance Professionals.

Concerns about failing inspections become a thing of the past with EZ-Path®. The system is easy to visually inspect and is ideal for both new construction and existing conditions.

For the Health Care Professional.

Infection control is paramount in healthcare facilities. EZ-Path® minimizes the spread of hospital-acquired infections (HAIs) by reducing or eliminating trips above the ceiling to unseal, reseal, or adjust equipment of any kind.

For the Owner.

EZ-Path® eliminates downstream labor costs with the use of pull strings inside the EZ-Path® devices, for easy cable MAC work from remote locations—saving you time and money over the life cycle of the building.

For Architects, Consultants, Specifiers, and RCDDs.

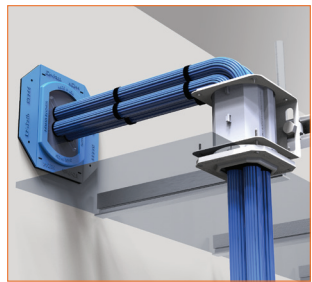
EZ-Path® provides you with a complete solution to help protect the legacy of your project. Whether it's the engineered aesthetics, the robust design, the dynamic features, the ability to “future-proof” the design, or the unparalleled performance—EZ-Path® has you covered.

For the Cable Installer and IT / ICT Professional.

Recognized as best practice by trade professionals, EZ-Path® protects your network. Maintain compliance while navigating the demands of perpetually evolving floor, wall, and ceiling penetrations that result from equipment expansions and technology upgrades. Easy to install with nothing to maintain, EZ-Path® lets you execute continuous cable pulls while allowing your network to run at peak performance.



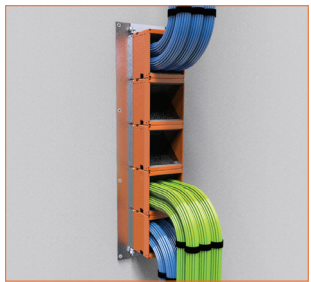
**EZ-Path®** The applications:



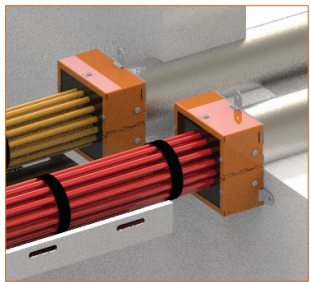
**Smoke & acoustical pathway**  
For non-fire-rated walls



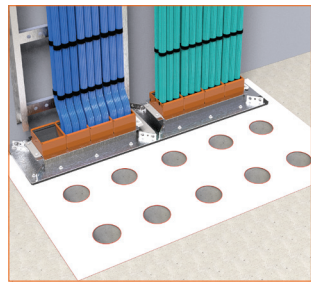
**Grommets**  
For single-cable applications



**EZ-Path multigang solutions**  
For space-saving vertical & horizontal applications



**EZDR Retrofit Device**  
For overfilled sleeves



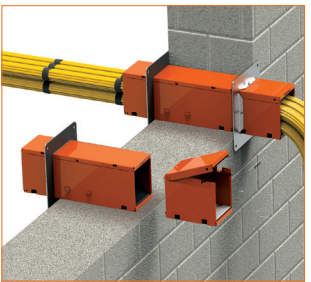
**Smaller footprint**  
For greater cable capacity compared to traditional methods



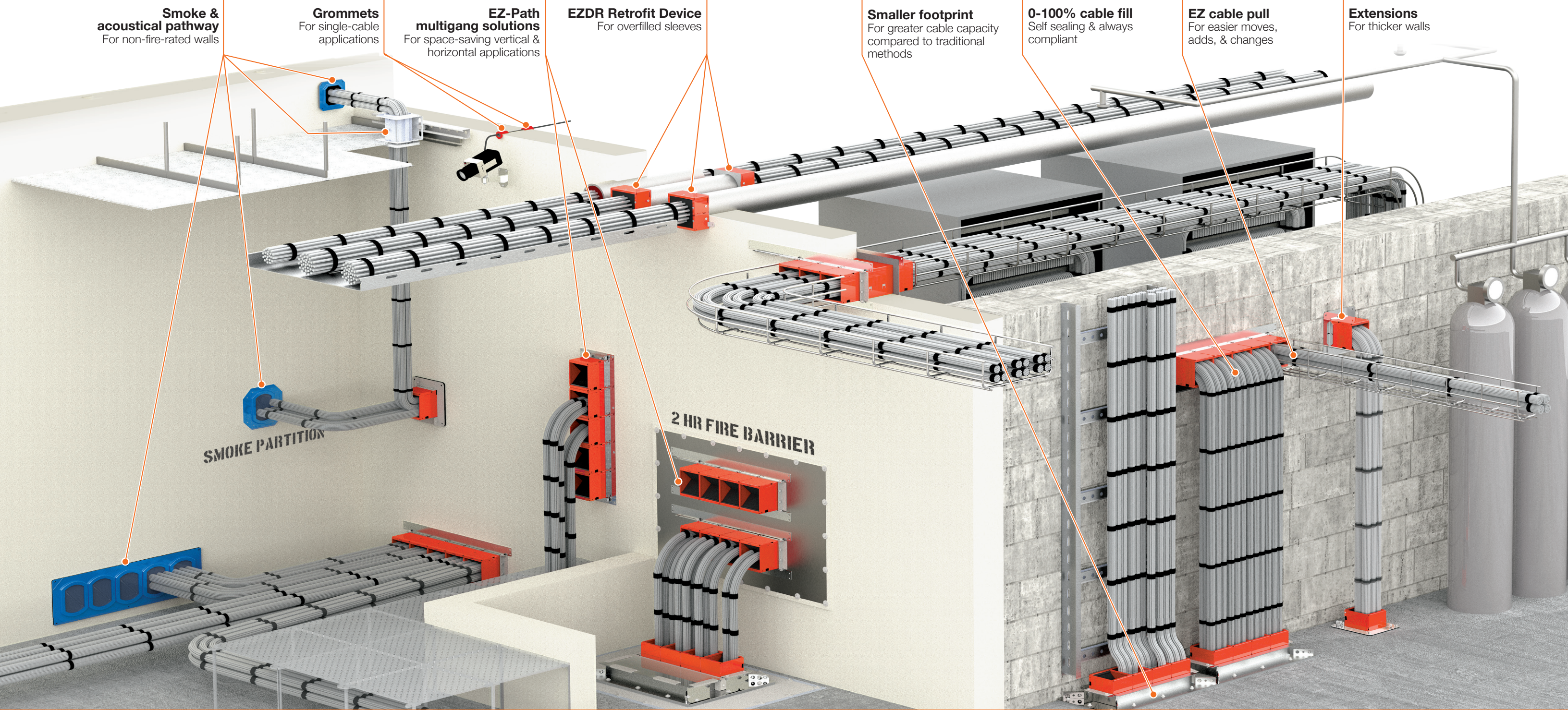
**0-100% cable fill**  
Self sealing & always compliant



**EZ cable pull**  
For easier moves, adds, & changes



**Extensions**  
For thicker walls





EZ-Path® Specifications

EZ-Path Product	Height x Width Inches (mm)	Length Inches (mm)	Volume Expansion	Can be Ganged	Can be Lengthened	Insert into Cored Hole	Attached to Conduit	Fire Rating in Walls	Fire Rating in Floors
 RFG1	9/16 in. diam. (14 mm)	1-5/8 in. (41.3 mm)	—	—	—	9/16 in. (14 mm)	—	Up to 2 hours	—
 RFG2	1 in. diam. (25 mm)	1-5/8 in. (41.3 mm)	—	—	—	1 in. (25 mm)	—	Up to 2 hours	—
 Series 22	1-1/2 in. x 1-1/2 in. (38 mm x 38 mm)	10-1/2 in. (267 mm)	30X	—	—	2 in. (51 mm)	—	Up to 4 hours	Up to 4 hours
 EZDR200	3-1/2 in. x 4-1/8 in. (89 mm x 105 mm)	2-3/4 in. (70 mm)	24X to 48X	—	—	2 in. (2-3/16 in. or 2-3/8 in. O.D.) Sleeves	YES	Up to 2 hours	Up to 2 hours
 EZDR400	5-1/2 in. x 16-1/4 in.	2-3/4 in. (70 mm)	24X to 48X	—	—	6 in. (152 mm) increments	YES	Up to 2 hours	Up to 2 hours
 Series 33	3 in. x 3 in. (76 mm x 76 mm)	10-1/2 in. (267 mm)	15X	Up to 7 in walls	6 in. (152 mm) increments	4 in. (102 mm)	4 in. (102 mm)	Up to 4 hours	Up to 4 hours
 Series 44+	4 in. x 4-5/8 in. (102 mm x 118 mm)	14 in. (356 mm)	15X	Up to 5 in walls Up to 16 in floors	6 in. (152 mm) increments	6 in. (152 mm)	—	Up to 4 hours	Up to 4 hours
 Series 44NEZ	7-1/2 in. x 7-1/8 in. (191 mm x 181 mm)	24 in. to 8 in. (102 mm to 203 mm)	—	Up to 5 in walls	—	6 in. (152 mm)	—	Not Rated	Not Rated
 Series 33NEZ	5 in. x 5 in. (flange) (127 mm x 127 mm)	24 in. to 8 in. (102 mm to 203 mm)	—	Up to 4 in walls	—	4 in. (102 mm)	—	Not Rated	Not Rated
 Series 33NEZ Ceiling	5 in. x 5 in. (flange) (127 mm x 127 mm)	5 in. overall 34-3/8 in. (127 mm) (111 mm)	—	—	—	4 in. (102 mm)	—	Not Rated	Not Rated

1 EZDR 400 width includes locking tab. Device can be rotated to any orientation. (i.e.: 6-1/4 in. H x 5-1/2 in. W)  
2 NEZ33 fits walls 4 in. to 8 in. in width.  
3 NEZ33CK2 dimension measured from bottom of steel plate abutting unexposed ceiling to top of device.

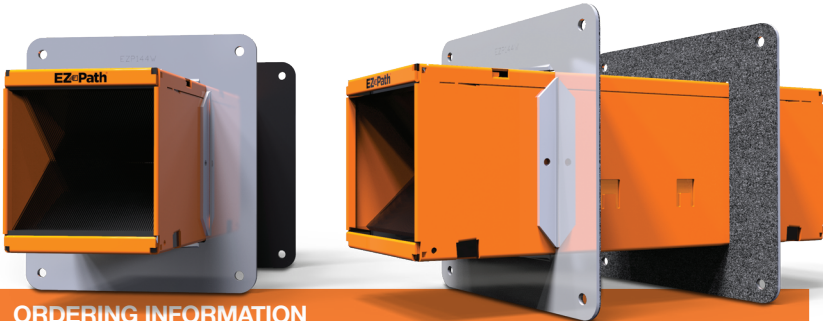












Series 44+ Fire-Rated Pathway

The EZ-Path® Series 44+ Fire-Rated Pathway is a maintenance-free pathway solution designed for high cable volume conditions through fire-rated walls and floors. The Series 44+ incorporates self-sealing intumescent pads that automatically adjust to the installed cable fill without the need for user manipulation. Under fire exposure, the intumescent pads expand and swell, resisting the passage of smoke and flame.

Features & Benefits:

- Self Sealing design provides exceptional fire and smoke leakage ratings
- Allows for easy moves, adds, and changes
- Designed for new and existing conditions
- Variety of accessories available for any field condition
- Modular grid system for riser applications
- Greatest achievable cable density of any solution on the market



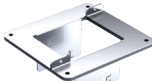
Single Device			ORDERING INFORMATION				
Catalog Number	UPC Number	Description	(UOM) Qty.	Case Qty.	Weight (Each)	Device	
EZD44S2	730573001004	Fire-Rated Pathway Device	1	4	5.56 lbs (2.52 kg)	EZD44S2	
Single Pathway Installation Through Walls							
EZDP44S2	730573001066	Fire-Rated Pathway Kit – Device with wall plates and labels	1	1	7.92 lbs (3.59 kg)		
EZP144W	730573001448	Single Wall Plates and Labels	1	1	5.27 lbs (2.39 kg)		
Single Pathway Installation Through Walls With Existing Cables							
EZDP144RS2	730573001073	Split Wall Plate – Device with split wall plate and labels	1	1	8.17 lbs (3.70 kg)		
EZP144RS	730573001486	Split Wall Plate – Plate only	1	1	2.42 lbs (1.10 kg)		
Single Pathway Installation Through Walls With Existing Cables							
EZP544W	730573005446	Multi-gang wall plate brackets for 1-5 devices. Devices not included.	1	1	3.91 lbs (1.77 kg)	EZP544W	
EZP544WD	730573005460	Multi-gang wall plate brackets for 2-10 devices. Devices not included.	1	8	4.00 lbs (1.81 kg)	EZP544WD	
EZP644W	730573006481	Multi-gang wall plate brackets for 12 devices. Devices not included.	1	8	4.40 lbs (1.99 kg)	EZP644W	
EZP644WD	730573006573	Multi-gang wall plate brackets for 1-5 devices. Devices not included.	1	1	4.80 lbs (2.18 kg)	EZP644WD	
EZP544WV	730573005477	Vertical Multi-Gang Wall Bracket Kit for 1-5 devices. Devices not included.	1	1	7.00 lbs (3.18 kg)	EZP544WV	









# Series 44+ Fire-Rated Pathway



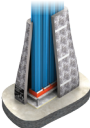
## Vertical Cable Solutions

Single Pathway Installation Through Floors						ORDERING INFORMATION	
Catalog Number	UPC Number	Description	(UOM) Qty.	Case Qty.	Weight (Each)	Device	
EZDP144FKS2	730573001080	Floor Kit – Device with floor plate	1	1	7.32 lbs (3.32 kg)		
EZP144F	730573008348	Split Floor Plate – Plate only	1	1	1.50 lbs (0.68 kg)		

## Specialty Options

Extension Module						ORDERING INFORMATION	
Catalog Number	UPC Number	Description	(UOM) Qty.	Case Qty.	Weight (Each)	Device	
EZD44ES	730573000694	6" Extension Module – use with Series 44+ pathway ONLY	1	1	2.44 lbs (1.11 kg)		
Radius Control Extension Module							
EZRCM44S	730573009345	Radius Control Module – one pair (2) for use with Series 44+ pathway ONLY	1	4	0.12 lbs (0.05 kg)		

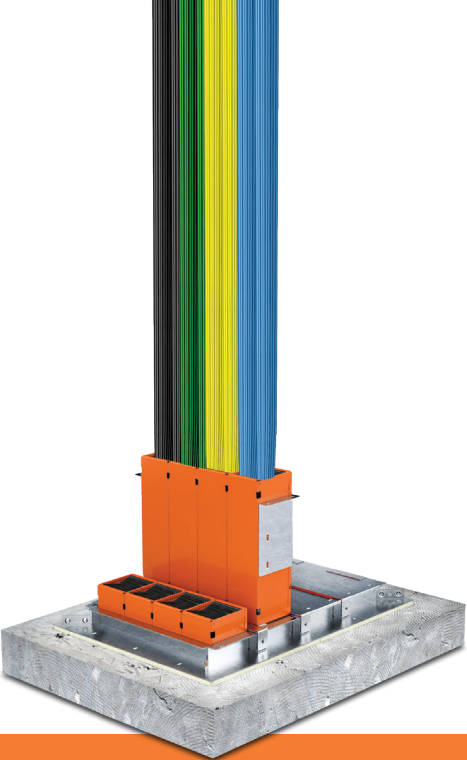
## Vertical Specialty Options

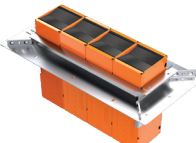

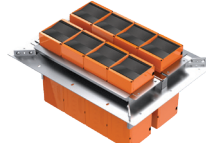

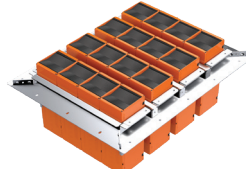
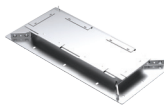
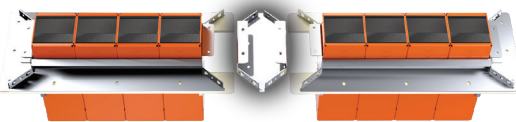
Hanger Bracket						ORDERING INFORMATION	
Catalog Number	UPC Number	Description	(UOM) Qty.	Case Qty.	Weight (Each)	Device	
EZP444MB	730573004487	Hanger Bracket for Modular Floor Grid System	1	1	1.30 lbs (0.59 kg)		
Pathway Module							
EZD444MBS2	730573001097	Single Bank of Devices – Four (4) Devices with hanger bracket	1	1	23.37 lbs (10.60 kg)		
T-Rating Kit							
TRK444	730573004463	T-Rating Kit	1	1	15.36 lbs (6.97 kg)		

# Series 44+ Fire-Rated Pathway

## Modular Floor Grid System

Modular Floor Grid Systems utilize the high volume, EZ-Path® Series 44+ pathways, installed in banks of four, to provide your cabling systems with room to grow. Sturdy steel grids mount one, two, or four banks of pathways in built-in slots for a total of up to sixteen pathways through a single floor opening. A single bank floor grid comes complete with pathways. Multi-bank modular floor grids are installed with firestop panels sealing each slot. As additional cable capacity is required, firestop panels are removed, and pathway modules containing four pathways are installed in each slot.



Single-Slot Modular Floor Grid			ORDERING INFORMATION				
Catalog Number	UPC Number	Description	(UOM) Qty.	Case Qty.	Weight (Each)	Device	
EZDG444S2	730573001103	Single Bank Floor Grid – Four (4) Devices with floor frame	1	1	37.40 lbs (16.96 kg)	 <b>EZDG444S2</b> Full kit	 <b>EZG444</b> Without pathway
EZD44S2	730573001004	Fire-Rated Pathway Device	1	1	5.56 lbs (2.52 kg)		
Two-Slot Modular Floor Grid							
EZDG844S2	730573001110	Dual-slot Frame Kit with 8 Pathways – (Includes eight (8) Series 44+ devices with EZG844)	1	1	65.86 lbs (29.87 kg)	 <b>EZDG844S2</b> Full kit	 <b>EZG844</b> Without pathway
EZG844	730573008447	Dual-Slot Frame for Eight (8) Pathways	1	1	16.25 lbs (7.37 kg)		
Four-Slot Modular Floor Grid							
EZDG1644S2	730573001127	Quad-slot Frame Kit with 16 Pathways – (Includes sixteen (16) Series 44+ devices with EZG1644)	1	1	-----	 <b>EZDG1644S2</b> Full kit	 <b>EZG1644</b> Without pathway
EZG1644	730573006443	Multi-Slot Frame for Sixteen (16) Pathways	1	1	26.59 lbs (12.06 kg)		
Splice Plate Kit							
EZG444CP	730573004494	Floor Grid Splice Plate Kit – includes plate and gasket	1	1	2.11 lbs (0.95 kg)		

Scan to learn more about the EZ-Path® System ▶





Series 33 Fire-Rated Pathway


The EZ-Path® Series 33 Fire-Rated Pathway is a maintenance-free pathway solution for moderate cable volumes through fire-rated walls and floors. The Series 33 incorporates built-in intumescent pads that automatically adjust to cable fills. When exposed to flame and high temperatures, the intumescent pads expand to form a dense insulative char that prevents the passage of smoke and flame.

Features & Benefits:



- Self Sealing design provides exceptional fire and smoke leakage ratings
- Allows for easy moves, adds, and changes
- Designed for new and existing conditions
- Variety of accessories available for any field condition
- Available in an array of colors for easy cable pathway management




Single Device ORDERING INFORMATION

Catalog Number	UPC Number	Description	(UOM) Qty.	Case Qty.	Weight (Each)	Device
EZD33FWS	730573000045	Fire-Rated Pathway Device	1	6	2.70 lbs (1.22 kg)	

Single Pathway Square Plate Kit



EZDP33FWS	730573000342	Square Plate Kit – Device with square wall plates and labels	1	4	3.52 lbs (1.60 kg)	 
EZP133W	730573001332	Square Wall Plates with labels	1	1	0.81 lbs (0.37 kg)	

Single Pathway Circular Plate Kit



EZDP133CWK	730573000359	Circular Plate Kit – Device with circular wall plates and labels	1	1	3.83 lbs (1.74 kg)	 
EZP133CW	730573001370	Circular Wall Plates with labels	1	1	0.82 lbs (0.37 kg)	

Multi-Gang Plates

Two Gang ORDERING INFORMATION

Catalog Number	UPC Number	Description	(UOM) Qty.	Case Qty.	Weight (Each)	Device
EZDP233GK	730573002353	Two-Gang Kit – Two (2) devices with two-gang plates and labels	1	1	6.48 lbs (2.94 kg)	 
EZP233W	730573002339	Two-Gang Wall Plates with labels	1	1	0.79 lbs (0.36 kg)	

Three Gang




EZDP333GK	730573903353	Three-Gang Kit – Three (3) devices with three-gang plates and labels	1	1	9.10 lbs (4.13 kg)	 
EZP333W	30573003336	Three-Gang Wall Plates and labels	1	1	1.03 lbs (0.47 kg)	

Series 33 Fire-Rated Pathway



Multi-Gang Plates continued



Four Gang ORDERING INFORMATION



Catalog Number	UPC Number	Description	(UOM) Qty.	Case Qty.	Weight (Each)	Device
EZDP433GK	730573004357	Four-Gang Kit – Four (4) devices with four-gang plates and labels	1	1	13.06 lbs (5.92 kg)	  
EZP433W	730573004333	Four-Gang Wall Plates and labels	1	1	1.73 lbs (0.78 kg)	
EZDP433GK-C	730573004357	Color Coded Four-Gang Kit Four (4) Devices (1-orange, 1-blue, 1-yellow, 1-white) with four-gang plates and labels	1	1	0.79 lbs (0.36 kg)	

Seven Gang



EZDP733GK	730573007358	Seven-Gang Kit – Seven (7) devices with seven-gang plates and labels	1	1	21.82 lbs (9.90 kg)	 
EZP733W	730573007334	Seven-Gang Wall Plates and labels	1	1	2.66 lbs (1.21 kg)	

Specialty Options

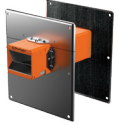

New Cable Installations Through Floors ORDERING INFORMATION

Catalog Number	UPC Number	Description	(UOM) Qty.	Case Qty.	Weight (Each)	Device
EZDP133FK	730573008355	Kick in Floor Plate Kit – Device with split floor plate	1	1	3.53 lbs (1.60 kg)	 
EZP133K	730573008331	Kick-In Split Floor Plate	1	6	0.71 lbs (0.32 kg)	



Conduit Attachment

EZDP133CAK	730573000366	Conduit Attachment Kit-Device with conduit attachment plate and label	1	1	4.05 lbs (1.84 kg)	 
EZP133CA	730573001387	Conduit Attachment Plate with label	1	1	0.86 lbs (0.39 kg)	


Retro-Fit

EZDP33WR	730573005330	Retro-Fit Kit – Device with retro-fit wall mounting plates and labels	1	1	6.63 lbs (3.01 kg)	 
EZP133R	730573005354	Retro-Fit Mounting Plates with labels	1	1	3.57 lbs (1.62 kg)	


Extension Module

EZD33E	730573000052	Extension Module	1	1	1.63 lbs (0.74 kg)	 
--------	--------------	------------------	---	---	--------------------	---

Positioning Clamp

EZP133PC	730573001356	One Pair (2) Positioning Clamps	1	1	0.20 lbs (0.09 kg)	
----------	--------------	---------------------------------	---	---	--------------------	---

Radius Control Module

RCM33	730573009338	One Pair (2) Radius Control Modules	1	1	0.05 lbs (0.02 kg)	
-------	--------------	-------------------------------------	---	---	--------------------	---

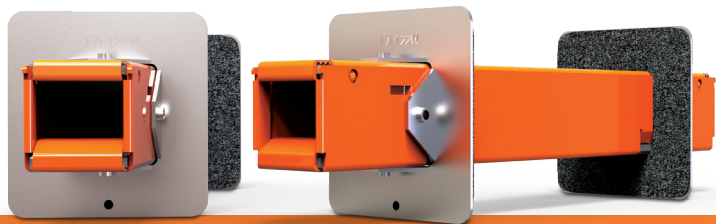


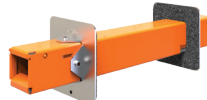
## Series 22 Fire-Rated Pathway

The **EZ-Path® Series 22 Fire-Rated Pathway** is a maintenance-free pathway solution for smaller cable bundles through fire-rated wall assemblies. The device is offered as a complete kit without the need for additional accessory products for installation.

**Features & Benefits:**

- Self Sealing design provides exceptional fire and smoke leakage ratings
- Allows for easy moves, adds, and changes
- Designed for new and existing conditions
- Suited for round and rectangular openings



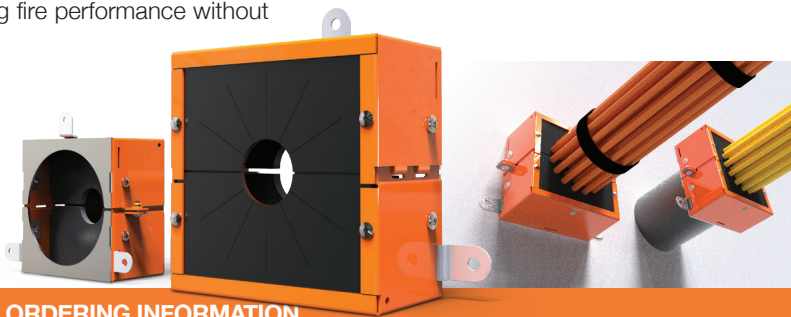
Single Device			ORDERING INFORMATION			
Catalog Number	UPC Number	Description	(UOM) Qty.	Case Qty.	Weight (Each)	Device
EZD22	730573000229	Device, full kit includes wall plates and labels	1	6	1.91 lbs (0.86 kg)	<div><div>EZD22</div></div>

## Retrofit Device

Overfilled cable sleeves are the bane of every facilities team. Bring these deficient openings back into code compliance with the **EZ-Path® Retrofit Device**. Its two-part clam shell design installs around projecting sleeves and cable bundles, restoring fire and smoke leakage performance. The EZ-Path® Retrofit Device quickly and easily retrofits sleeves of up to 100% visual fill, restoring fire performance without the need for additional firestop products.

**Features & Benefits:**

- Sized for 2 in. and 4 in. metallic sleeves
- Designed for cable sleeves and stubs
- Professional fit and finish
- Safety Orange for easy identification
- Suited for round and rectangular openings



Single Device		ORDERING INFORMATION						
Catalog Number	UPC Number	Description	(UOM) Qty.	Case Qty.	Weight (Each)	Device		
EZDR200	730573002001	Retrofit Device for 2" (2-3/16" or 2-3/8" O.D.) Sleeves, One Pair (2)	1	4	2.83 lbs (1.28 kg)	EZDR200		
EZDR400	730573004005	Retrofit Device for 4" (4-1/2" O.D.) Sleeves, One Pair (2)	1	4	4.81 lbs (2.18 kg)	EZDR400		
EZPR150	730573002018	1-1/2" Adapter Plate for EZDR200, One Pair (2)	1	1	0.75 lbs (0.34 kg)	EZPR150		
EZPR300	730573004012	3" Adapter Plate for EZDR400, One Pair (2)	1	1	1.25 lbs (0.57 kg)	EZPR300		



## EZ-Firestop® Grommet

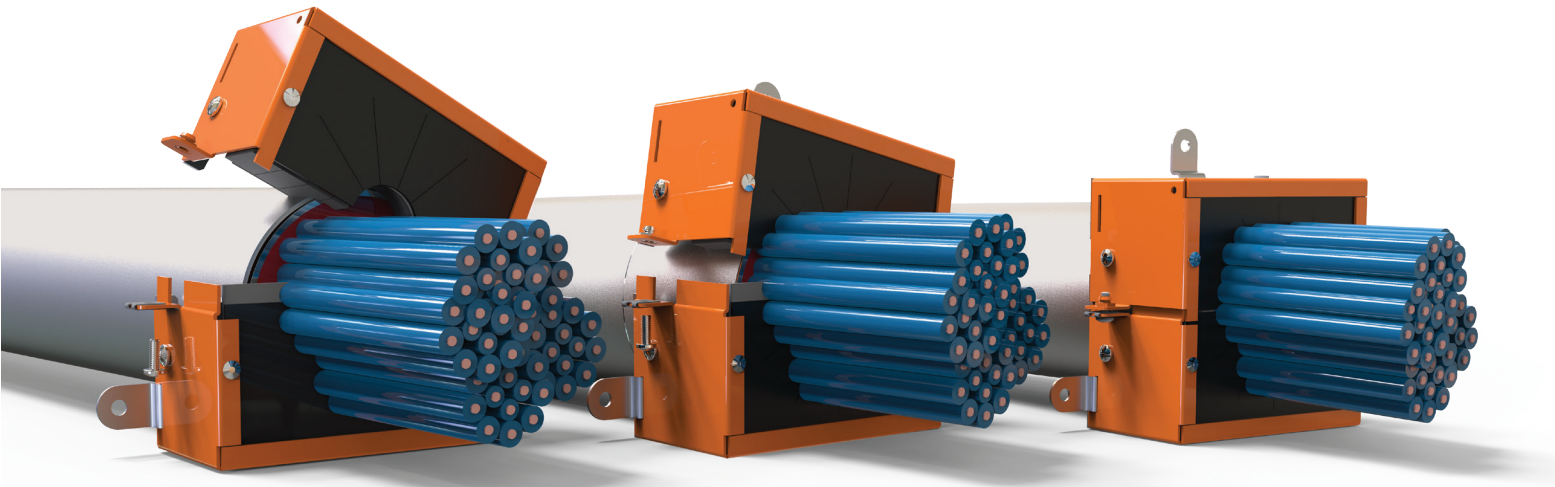
EZ-Firestop® Grommets make sealing penetrations of individual and small bundles of cables through gypsum board walls a snap. Molded from premium plenum-plastics and incorporating a soft foam inner core, EZ-Firestop® Grommets eliminate the need for sleeves, firestop putties, and sealants.

**Features & Benefits:**

- Suited for addressing single membrane or complete through-penetrations
- Available as a single cable or multiple cable solution
- Ideal for alarm, security, or wireless access point installations
- Designed for 1 & 2 hr fire-rated gypsum board wall assemblies
- Professional finished appearance



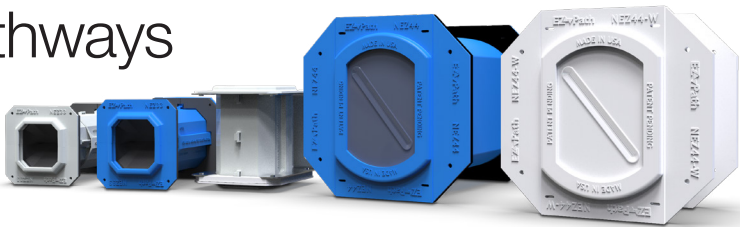
Firestop Grommets		ORDERING INFORMATION				
Catalog Number	UPC Number	Description	(UOM) Qty.	Case Qty.	Weight (Each)	Device
RFG1	730573250587	Two-piece split cable grommet for single cable penetrations up to 0.27" (7 mm) diameter	1 Pack 10 Grommets per pack	10 Packs	0.21 lbs(0.10 kg)	RFG1 
RFG2	730573250594	Two-piece split cable grommet for single or multiple cable penetrations up to 0.53" (14 mm) diameter	1 Pack 10 Grommets per pack	10 Packs	0.40 lbs(0.18 kg)	RFG2 



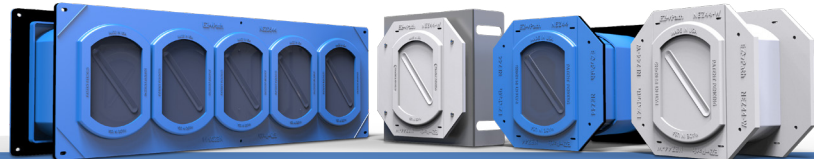


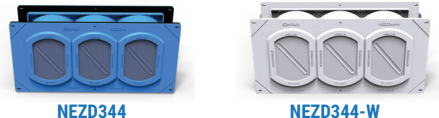

# Smoke & Acoustical Pathways

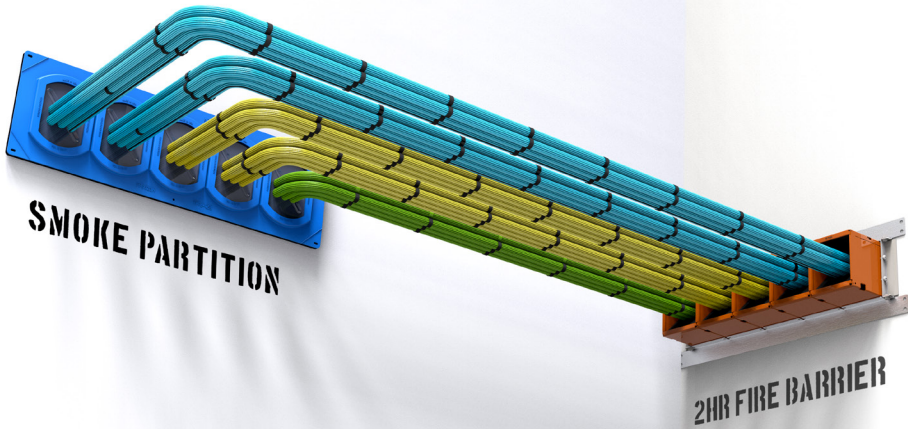
Designed for easy installation in non-fire-rated floor, ceilings, and walls, EZ-Path® Series 33NEZ & 44NEZ Smoke & Acoustical Pathways provide exceptional cable capacity with tested and approved cable capacities ranging from 0 up to 100% visual fill.



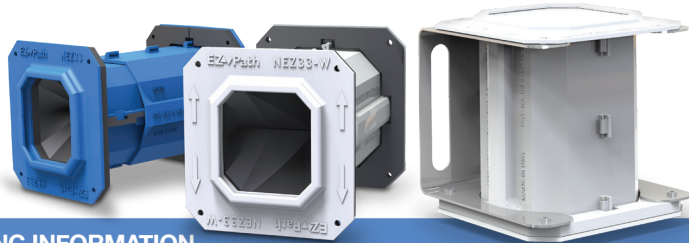
## Series 44NEZ



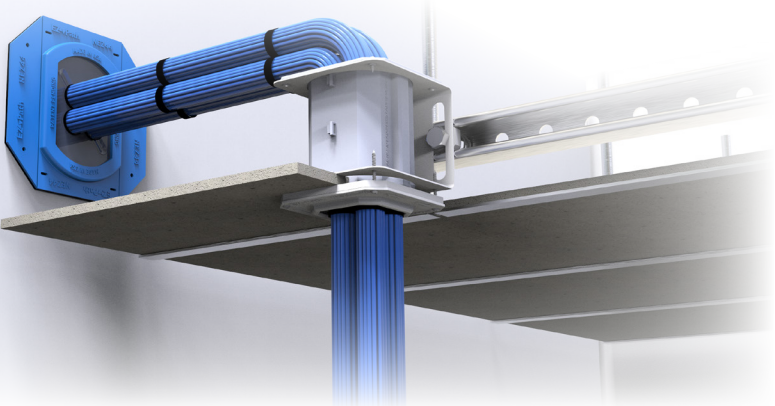
Single Device for Walls and Floors						ORDERING INFORMATION	
Catalog Number	UPC Number	Description	(UOM) Qty.	Case Qty.	Weight (Each)	Device	
NEZ44	730573111727	Smoke and Acoustical Pathway (Blue)	1	4	1.92 lbs (0.89 kg)		
NEZ44-W	730573111734	Smoke and Acoustical Pathway (White)	1	4	1.92 lbs (0.89 kg)		
3 & 5 Gang Devices for Walls and Floors							
NEZD344	730573111772	Smoke and Acoustical Pathway 3-Gang Kit (Blue) [16" (406mm) Wall Studs]	1	1	5.27 lbs (2.39 kg)		
NEZD344-W	730573111789	Smoke and Acoustical Pathway 3-Gang Kit (White) [16" (406mm) Wall Studs]	1	1	5.27 lbs (2.39 kg)		
NEZD544	730573111796	Smoke and Acoustical Pathway 5-Gang Kit (Blue) [24" (610mm) Wall Studs]	1	1	7.94 lbs (3.60 kg)		
NEZD544-W	730573111802	Smoke and Acoustical Pathway 5-Gang Kit (White) [24" (610mm) Wall Studs]	1	1	7.94 lbs (3.60 kg)		
Non-Fire-Rated Ceiling Kits							
NEZ44CK	730573111741	Smoke and Acoustical Pathway Ceiling Kit (White)	1	4	1.95 lbs (4.23 kg)		
NEZ344CK	730573111819	Smoke and Acoustical Pathway 3-Gang Ceiling Kit (White)	1	4	1.95 lbs (4.23 kg)		



## Series 33NEZ



Single Device for Walls and Floors						ORDERING INFORMATION	
Catalog Number	UPC Number	Description	(UOM) Qty.	Case Qty.	Weight (Each)	Device	
NEZ33	730573111581	Smoke and Acoustical Pathway, (Device Only) with hardware	1	4	1.27 lbs (0.57 kg)		NEZ33 NEZ33-W
NEZ33-W	730573111666	Smoke and Acoustical Pathway White, (Device Only) with hardware	1	4	1.27 lbs (0.58 kg)		
3 & 5 Gang Devices for Walls and Floors							
NEZDP233	730573111598	Smoke and Acoustical Pathway, Two Gang Kit(2 NEZ33 Pathways & 2 NEZP233 Two Gang Plates)	1	N/A	3.67 lbs (1.66 kg)		NEZDP233
NEZDP433	730573111604	Smoke and Acoustical Pathway, Four Gang Kit (4 NEZ33 Pathways & 2 NEZP433 Four Gang Plates)	1	N/A	6.27 lbs (2.84 kg)		NEZDP433
NEZP233	730573111611	Smoke and Acoustical Pathway, Two Gang Plate Kit (Plates Only)	1	N/A	0.91 lbs (0.41 kg)		NEZP233
NEZP433	730573111628	Smoke and Acoustical Pathway, Four Gang Plate Kit (Plates Only)	1	N/A	6.27 lbs (2.84 kg)		NEZP433
Retrofit Device							
NEZ33R	730573111659	Smoke & Acoustical Pathway Retrofit Device	2	2	1.08 lbs (0.49 kg)		NEZ33R
Non-Fire-Rated Ceiling Kits							
NEZ33CK2	730573111680	Smoke and Acoustical Pathway White, (Device Only) with Ceiling Kit	1	1	1.89 lbs (0.86 kg)		NEZ33CK2





# EZPath® Notable Projects

- ▶ **Akron Childrens**
- ▶ **Akron General**
- ▶ **Amazon**  
Fort Myers, FL
- ▶ **Avida Assisted Living**  
Fort Myers, FL
- ▶ **Bank of America**  
New York City, NY
- ▶ **Banner Phoenix Medical Center**
- ▶ **Barings Project**  
Charlotte, NC
- ▶ **Baylor Hospital**  
Grapevine, TX
- ▶ **Baylor Hospital**  
Marble Falls TX
- ▶ **Baylor Hospital**  
Waco, TX
- ▶ **BJC Downtown Campus**
- ▶ **Boiling Springs High School**  
Boiling Springs, SC
- ▶ **Carolinas Healthcare Systems**  
Charlotte, NC
- ▶ **Catawba Ridge High School**  
Monroe, NC
- ▶ **Cleveland Clinic Cancer Center**
- ▶ **Children's Healthcare of Atlanta**  
Atlanta, GA
- ▶ **Children's Hospital of Colorado**
- ▶ **Choctaw Casino**  
Durant OK
- ▶ **Choctaw Regional Hospital**  
Ada OK
- ▶ **Cleveland Clinic – Avon Facility**
- ▶ **Cleveland Clinic Office Building**  
Coconut Creek, FL
- ▶ **Cleveland Clinic**  
Weston, FL
- ▶ **Comcast Tower**  
Philadelphia, PA
- ▶ **Community Health**
- ▶ **Detroit Med Center – Childrens**
- ▶ **DHR Healthcare System**  
McAllen, TX
- ▶ **East County Detention Center**  
Riverside, CA
- ▶ **Facebook**
- ▶ **Facebook Data Center**  
Forest City, NC
- ▶ **Facebook Data Center**  
Maiden, NC
- ▶ **Face Book**  
Ft Worth, TX
- ▶ **Ford Motor Company**
- ▶ **Fort Bliss Medical Center**  
El Paso, TX
- ▶ **Kaiser San Diego**
- ▶ **Kaiser Santa Rosa**
- ▶ **Franciscan Health – St Anthonys**
- ▶ **Franciscan – St. James**
- ▶ **Google Data Center**  
Atlanta, GA
- ▶ **Health South Headquarters**  
Birmingham, AL
- ▶ **Hillcrest Hospital System**  
Tulsa, OK
- ▶ **Hudson Yards Time Warner**  
New York City
- ▶ **Indian Health Services**
- ▶ **International Hotel Group**  
Dunwoody, GA
- ▶ **Iowa Childrens**
- ▶ **Lake Forest Hospital**
- ▶ **Lakeland Regional Healthcare**  
Lakeland, FL
- ▶ **Lash Kingsley Project**  
Charlotte, NC
- ▶ **Lee Health**  
Fort Myers, FL
- ▶ **Lee Memorial Hospital**  
Fort Myers, FL
- ▶ **Lexington Medical Center**  
West Columbia, SC
- ▶ **Market Tower**
- ▶ **Martin Memorial**  
Port St. Lucie, FL
- ▶ **Mayo Clinic**  
Jacksonville, FL
- ▶ **Medical City**  
Plano, TX
- ▶ **Memorial Sloan Hospital**  
New York City
- ▶ **Mercy – Jeff County**
- ▶ **Mercy Rockford**
- ▶ **MicroSoft**
- ▶ **Microsoft Data Center**  
Washington DC
- ▶ **Midland Memorial Hospital**  
Midland, TX
- ▶ **Mt. Sinai MRI Suite**  
Miami, FL
- ▶ **NASA Corporate Headquarter Complex,**  
Kennedy Space Center
- ▶ **Nationwide Childrens**
- ▶ **Navy Federal Credit Union**  
Pensacola, FL
- ▶ **NCAA Data Center**  
Pell City, AL
- ▶ **Norman Regional Hospital**  
Moore, OK
- ▶ **Novant Health**  
Charlotte, NC
- ▶ **Oregon Health and Science University**
- ▶ **Orlando Police Department**  
Orlando, FL
- ▶ **OSF St Francis**
- ▶ **Parkland Hospital**  
Dallas, TX
- ▶ **Port Huron Med Center**
- ▶ **PSU – Behren Hall**
- ▶ **Rapid City Regional**
- ▶ **Research Hospital**
- ▶ **Rex Hospital**  
Raleigh, NC
- ▶ **Riverside Methodist Tower**
- ▶ **Sanford Medical**
- ▶ **Sarasota Air Traffic Control**  
Sarasota, FL
- ▶ **Shands Hospital**  
Gainesville, FL
- ▶ **Sheriff Office Complex**  
Sebring, FL
- ▶ **Stanford Medical Center**
- ▶ **State Farm Corporate Center**  
Atlanta, GA
- ▶ **State Farm**  
Dallas, TX
- ▶ **St Elizabeth**
- ▶ **St. Francis Medical Center**  
Denver, CO
- ▶ **St John's Hospital**  
Tulsa, OK
- ▶ **St. Vincent's Hospital**  
Birmingham, AL
- ▶ **Sutter Cathedral Hill**
- ▶ **Tesla Manufacturing Plant**  
Reno, NV
- ▶ **Texas Tech University**  
Lubbock TX
- ▶ **Texoma Regional Hospital**  
Sherman, TX
- ▶ **Toyota Headquarters**  
Plano, TX
- ▶ **University of Colorado Health**  
Longs Peak Hospital
- ▶ **University of Miami Medical Center**  
Miami, FL
- ▶ **University of North Florida,**  
Skinner Hall
- ▶ **University of Tennessee Dormitory**  
Knoxville, TN
- ▶ **University of Tennessee Medical Ctr.**  
Knoxville, TN
- ▶ **U of Cincinnati Tower**
- ▶ **U of NE Med Center**
- ▶ **Utah Valley Regional Medical Center**
- ▶ **UT Southwest Medical**  
Dallas, TX
- ▶ **Via Christi**
- ▶ **Wells Fargo, Charlotte, NC**
- ▶ **World Trade Center Tower 1**  
New York City, NY