

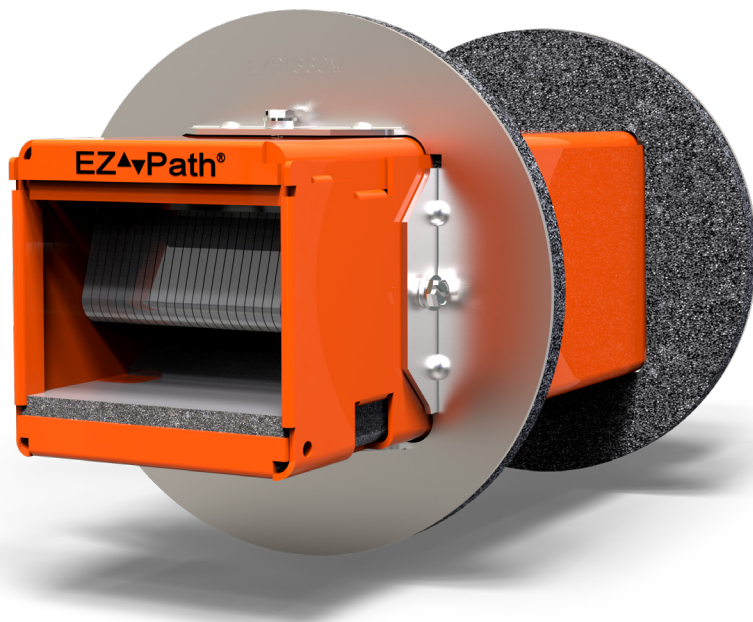
EZ Path® Series 33 Fire Rated Pathway



The EZ Path® Fire Rated Pathway is a pathway device designed to allow cables to penetrate fire-rated walls and floors without the need for firestopping. This device features a built-in fire and smoke sealing system that automatically adjusts to the amount of cables installed. Once installed in a fire barrier, cables can be easily added or removed at any time without the need to remove or reinstall firestopping materials.

EZ Path® Series 33 Fire Rated Pathway consists of an enclosed heavy gauge galvanized steel pathway lined with intumescent material engineered for rapid expansion when exposed to fire or high temperatures, quickly sealing the pathway and preventing the passage of flames and smoke.

EZ Path® Series 33 Fire Rated Pathway is painted safety orange for easy identification. Its compact square profile allows a maximum number of cables to be installed in a relatively small area. The pathway measures approximately 3" (76 mm) x 3" (76 mm) and is 10.5" (267 mm) long.



Applications

EZ Path® Series 33 Fire Rated Pathway is designed for easy installation in floors and walls. Tested and approved cable capacities range from 0 to 100% visual fill. EZ Path® Series 33 Fire Rated Pathway when installed with available wall plates is designed for new cable installations. In these installations, the device does not require mechanical attachment to either the wall or the wall framing and may be installed after the wallboard has been installed. EZ Path's® split body design also allows the device to be easily disassembled and installed around previously installed cables in existing construction.

EZ Path® Series 33 Fire Rated Pathway provides exceptional cable capacity. A single unit installed in a wall exceeds the cable carrying capacity of a 4" (102 mm) sleeve utilizing typical putty firestop systems (35% cable loading). Multiple ganged devices utilizing available double, triple, four and seven gang wall plates provide additional capacity or segregation of cables by use, type, installer or vendor as desired.

Specifications

All data, video, and communications cable bundles shall utilize an enclosed fire-rated pathway device wherever said cables penetrate rated walls. The fire-rated pathway shall contain a built-in fire sealing system sufficient to maintain the hourly fire rating of the barrier being penetrated. The self-contained sealing system shall automatically adjust to the installed cable loading and shall permit cables to be installed, removed, or retrofitted without the need to remove or reinstall firestop materials. The pathway shall be UL Certified and/or FM Systems Approved and tested to the requirements of ASTM E814 (UL1479) and CAN/ULC-S115.

Specified Divisions

Division 7	07 84 13	Penetration Firestopping
Division 26	26 00 00	Electrical
Division 27	27 00 00	Communications

Features & Benefits

- Easy to install
- No firestopping required
- Acoustically tested
- Firestopped at all stages of use
- UL tested - low leakage
- UL Certified for the complete range of its capacity
- Pathways can be ganged for additional capacity
- Permits cable segregation by use, type, vendor
- Match the capacity of a 4" (102 mm) conduit

EZ Path® Series 33 Fire Rated Pathway



PHYSICAL PROPERTIES

Shell Composition	0.059" (1.5 mm) Galvanized Steel
Cable Loading Area	6 sq in (nom.) [39 sq cm]
Allowable Cable Fill	0 to 100% Visual
Fire Resistance Ratings	1, 2, 3 and 4 Hour
Expansion Begins	350°F (177°C)
Volume Expansion	15x
Sample Cable Volume Cat 6 (0.236" OD)	88 (nom.)
In Service Temperature	-10°F (-23°C) to 120°F (49°C)
Storage Temperature	Less than 120°F (49°C)
Shelf Life	No Limit

Performance

EZ Path® is UL Tested and Certified in accordance with ASTM E814 (UL1479) and CAN/ULC-S115. Systems are available for common floor and wall constructions with ratings up to and including 4 hours.



Limitations

This product has been designed to be safe with plastics. It has been used extensively and successfully with various types of plastic pipes, tubes, and plastic cable insulations. Variations in these materials, however, make it impossible to guarantee compatibility. STI strongly recommends that the user consults with the pipe, tubing, or cable manufacturer in question regarding any known sensitivities or potential restrictions before applying this product.

Cable Installation

Cables may easily be added or removed at any time without removing or reinstalling the fire seal. Cables may be added individually or in bundles. Wrapping ends with a low-friction tape facilitates cable insertion. A self-adjusting cable throat automatically adjusts to accommodate the cable bundle as it passes through the pathway.

Maintenance

No maintenance of the pathway is normally required.

System Selection

To find your firestop system or create a submittal, visit <https://systems.stifirestop.com/> to use System Search & Submittal Builder. You may also visit the [UL Online Certifications Directory/UL Product iQ™](#) for complete listings. (Firestop Systems).

Technical Service

Specified Technologies Inc. provides toll free technical support to assist in product selection and appropriate installation design. UL System designs suitable for submittal or specification purposes are available on request. A complete library of technical information is provided at the company's website www.stifirestop.com including Safety Data Sheets (SDS's).

Precautionary Information

The use of this device is subject to local, regional and national codes. Consult the local Building Code Official or Authority Having Jurisdiction regarding any regional or local requirements that might influence the selection or use of this product.

EZ Path® Series 33 Fire Rated Pathway



Availability

EZ-Path® Products are available from Specified Technologies Inc. (STI) authorized distributors. For additional purchasing and technical information or for the names and locations of the nearest representative and/or distributor, regarding this and other Specified Technology products, please call 1-800-992-1180 or visit www.stifirestop.com.

Patents

US2007125018A1; US7523590B2; US2006138251A1; US7373761B2; US2014020915A1; US8869475B2; CA2427515A1; CA2427515C; EP3355997A1; EP3355997A4; EP3355997B1; EP3355997B8

ORDERING INFORMATION - SINGLE DEVICE

Catalog Number	UPC Number	Description	(UOM) Qty.	Case Qty.	Weight (Each)
EZD33FWS	730573000045	Fire-Rated Pathway Device	1	6	2.70 lbs (1.22 kg)
EZDP33FWS	730573000342	Square Plate Kit – Device with square wall plates and labels	1	4	3.52 lbs (1.60 kg)
EZP133W	730573001332	Square Wall Plates with labels	1	1	0.81 lbs (0.37 kg)
EZDP133CWK	730573000359	Circular Plate Kit – Device with circular wall plates and labels	1	1	3.83 lbs (1.74 kg)
EZP133CW	730573001370	Circular Wall Plates with labels	1	1	0.82 lbs (0.37 kg)
EZDP133FK	730573008355	Kick in Floor Plate Kit – Device with split floor plate	1	1	3.53 lbs (1.60 kg)
EZP133K	730573008331	Kick-In Split Floor Plate	1	6	0.71 lbs (0.32 kg)

ORDERING INFORMATION - RETROFIT INSTALLATIONS

EZDP33WR	730573005330	Retro-Fit Kit – Device with retro-fit wall mounting plates and labels	1	1	6.63 lbs (3.01 kg)
EZP133R	730573005354	Retro-Fit Mounting Plates with labels	1	1	3.57 lbs (1.62 kg)
EZDP133CAK	730573000366	Conduit Attachment Kit-Device with conduit attachment plate and label	1	1	4.05 lbs (1.84 kg)
EZP133CA	730573001387	Conduit Attachment Plate with label	1	1	0.86 lbs (0.39 kg)

ORDERING INFORMATION - GANG INSTALLATION

EZDP233GK	730573002353	Two-Gang Kit – Two (2) devices with two-gang plates and labels	1	1	6.48 lbs (2.94 kg)
EZP233W	730573002339	Two-Gang Wall Plates with labels	1	1	0.79 lbs (0.36 kg)
EZDP333GK	730573903353	Three-Gang Kit – Three (3) devices with three-gang plates and labels	1	1	9.10 lbs (4.13 kg)
EZP333W	730573003336	Three-Gang Wall Plates and labels	1	1	1.03 lbs (0.47 kg)
EZDP433GK	730573004357	Four-Gang Kit – Four (4) devices with four-gang plates and labels	1	1	13.06 lbs (5.92 kg)
EZP433W	730573004333	Four-Gang Wall Plates and labels	1	1	1.73 lbs (0.78 kg)
EZDP733GK	730573007358	Seven-Gang Kit – Seven (7) devices with seven-gang plates and labels	1	1	21.82 lbs (9.90 kg)
EZP733W	730573007334	Seven-Gang Wall Plates and labels	1	1	2.66 lbs (1.21 kg)

ORDERING INFORMATION - ACCESSORIES

EZD33E	730573000052	Extension Module	1	1	1.63 lbs (0.74 kg)
RCM33	730573009338	One Pair (2) Radius Control Modules	1	1	0.05 lbs (0.02 kg)

IMPORTANT NOTICE: ALL STATEMENTS, TECHNICAL INFORMATION, AND RECOMMENDATIONS CONTAINED HEREIN ARE BASED UPON TESTING BELIEVED TO BE RELIABLE, BUT THE ACCURACY AND COMPLETENESS THEREOF IS NOT GUARANTEED.

STI TYPICALLY WARRANTIES ITS PRODUCTS FOR ONE FULL YEAR. FOR COMPLETE DETAILS OF OUR STANDARD WARRANTY, PLEASE VISIT WWW.STIFIRESTOP.COM/LEGAL/WARRANTY

MADE IN THE USA – © 2021 SPECIFIED TECHNOLOGIES INC.

