

# GSE Studliner

The versatile choice for concrete protection



GSE® Studliner® is the number one choice for concrete protection.



**GSE Studliner is a high-density polyethylene (HDPE) geomembrane with studs on one side that lock the liner into the surface to prolong the life of the concrete. Each square meter contains over 1,200 studs, creating a product with exceptional pull-out strength and high resistance to mechanical, chemical and environmental threats.**

GSE Studliner can be supplied in either sheet form or pre-fabricated pieces and can be installed over an exposed surface of a new or existing concrete structure, in a wide range of industrial, municipal and civil applications. It is an economical alternative to other concrete protection systems.

## PERFORMANCE

Exposure	Performance
Maximum temperature	160°F
Acid resistance	Excellent
Alkali resistance	Excellent
Chlorinated Hydrocarbon Resistance	Good
Aromatic Hydrocarbon Resistance	Good
Aliphatic Hydrocarbon Resistance	Excellent
Plasticizer requirement	None
Filter requirement	None
Crosslinking due to UV	None
Molecular structure	Contains only carbon-carbon & carbon-hydrogen bonds which create broad chemical resistance & long-term durability
Seaming strengths	90% Efficiency

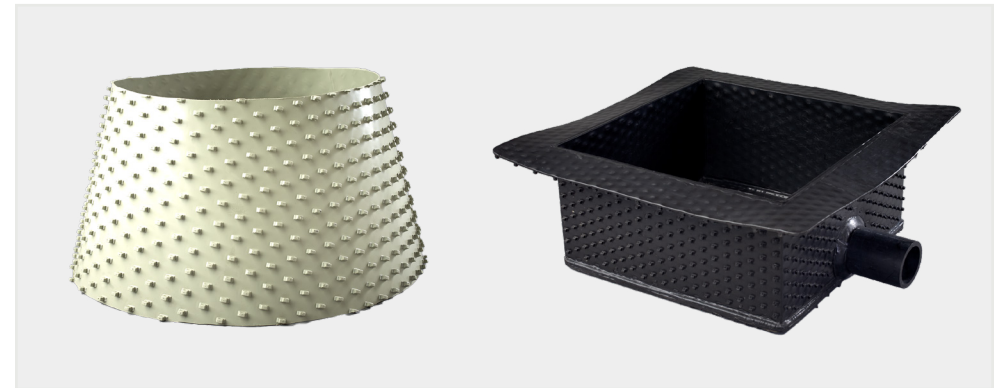
## FEATURES AND BENEFITS

### Design

- Thermoplastic embedment sheet manufactured with high-density polyethylene (HDPE). Studs are extruded during the sheet extrusion process and are an integral part of the sheet. Available in 2.0 mm to 5.0 mm with either a black or grey pigment.
- Available in either roll form or pre-fabricated panels. Standard roll dimensions are 8.0 feet in width and up to 246 feet in length depending on the selected product thickness.

### Benefits

- Highest liner pull-out strength available from any thermoplastic concrete protective system. Minimal lateral movement of the liner system due to thermal expansion and contraction. Excellent protection against mechanical damage and chemical attack.
- Outstanding resistance to UV degradation.
- Welding technology provides the highest reliability, repeatability and strength in the industry. Economic alternative to other concrete protection systems.
- Prefabricated panels available to any project-specific dimensions or geometric shapes.



**Prefabrication options**

## About us

Solmax is a world leader in sustainable construction solutions, for civil and environmental infrastructure. Its pioneering products separate, contain, filter, drain and reinforce essential applications in a more sustainable way – making the world a better place. The company was founded in 1981, and has grown through the acquisition of GSE, TenCate and Propex. It is now the largest geosynthetics company in the world, empowered by more than 2,000 talented people. Solmax is headquartered in the province of Quebec, Canada, with subsidiaries and operations across the globe.

## Uncompromised quality

Our products are manufactured to strict international quality standards. All our products are tested and verified at our dedicated and comprehensive laboratories which maintain numerous accreditations. We offer our partners a wide scope of testing according to published standards to ensure products delivered to sites meet specified quality requirements.

# Let's build infrastructure better

Solmax is not a design or engineering professional and has not performed any such design services to determine if Solmax's goods comply with any project plans or specifications, or with the application or use of Solmax's goods to any particular system, project, purpose, installation, or specification.

Products mentioned are registered trademarks of Solmax in many countries of the world.

**SOLMAX.COM**

