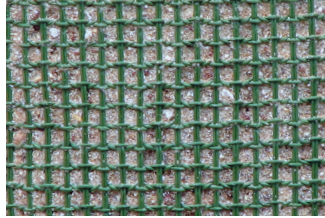


# The Many Faces of Miramesh® GR, SG, FR and TR Facing Geogrids

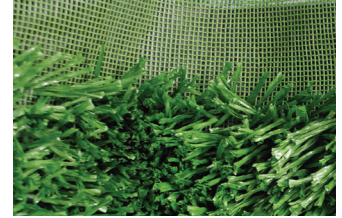
## TenCate Miramesh® GR Permanent Vegetated Face Wrap

- Green facing mesh
- Retains soil backfill
- Promotes vegetation growth
- 100% UV Resistance
- Exceeds 75 year design life



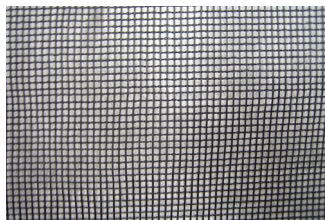
## TenCate Miramesh® SG Permanent Synthetic Grass Face Wrap

- Green synthetic grass face
- Finished vegetated face
- Maintenance free
- 100% UV Resistance
- Exceeds 75 year design life



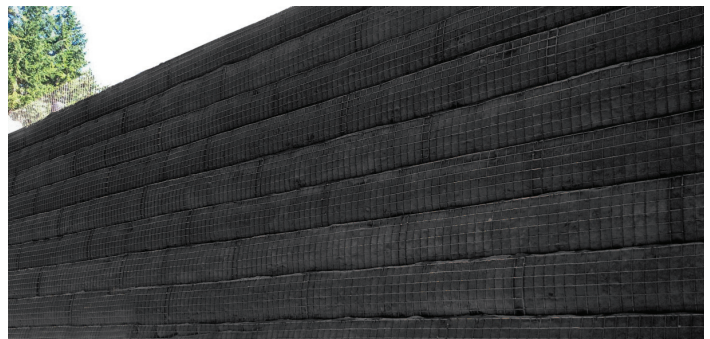
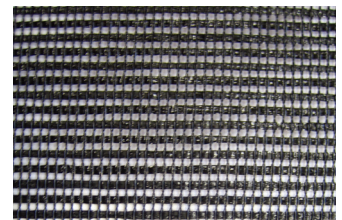
## TenCate Miramesh® FR Permanent Fire Resistant Face Wrap

- Black facing mesh
- Fire protection coating
- Supports vegetated face
- 100% UV Resistance
- Exceeds 75 year design life



## TenCate Miramesh® TR Nonpermanent Face Wrap

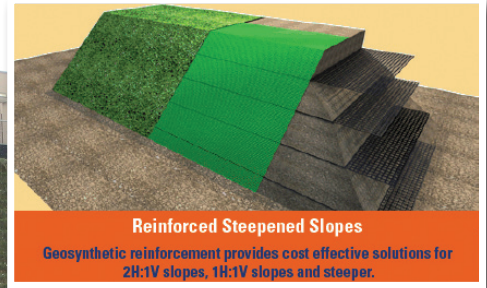
- Black facing mesh
- Economical facing reinforcement for temporary facing structures
- Lightweight secondary reinforcement
- Promotes vegetation growth
- Standard UV Resistance



# TenCate Miramesh® Applications



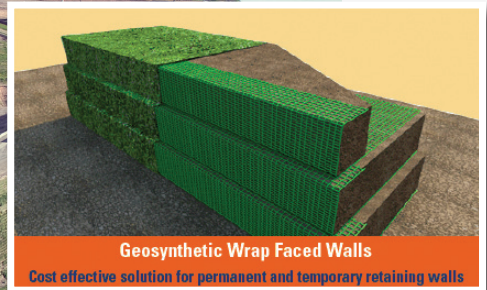
Lowe's Store, Western Hills, OH, Height = 65 1H:3V Miramesh GR inside wire basket wall.



**Reinforced Steepened Slopes**  
Geosynthetic reinforcement provides cost effective solutions for 2H:1V slopes, 1H:1V slopes and steeper.



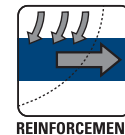
Cherry Island Landfill Expansion, Delaware River, Miramesh GR inside wire basket facing, Height = 75 ft.



**Geosynthetic Wrap Faced Walls**  
Cost effective solution for permanent and temporary retaining walls

TenCate Miramesh® biaxial geosynthetics are used as a face wrap material for steepened slopes applications and welded wire walls. Miramesh® facing geogrid provides surface erosion protection, which facilitates vegetation growth and secondary reinforcement.

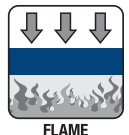
- Made in America
- Permanent facing exceeds 75-year design life
- Highly flexible, UV stable, long-term durability
- Green MSE walls and slopes
- Provides secondary reinforcement so mechanical connection with wire basket is not required
- Supports fast vegetation growth
- Easy and fast to install
- Retains soil while allowing plant growth (see photo)
- QC meets ISO 9001, A2LA, GAI-LAP
- Soil separator screen under ACB's and permeable pavers



REINFORCEMENT



EROSION PROTECTION



FLAME RETARDANT

365 S. Holland Drive  
Pendergrass, GA 30567

Tel 800 685 9990  
[www.mirafi.com](http://www.mirafi.com)

**TENCATE**  
materials that make a difference

TenCate Geosynthetics Americas assumes no liability for the accuracy or completeness of this information or for the ultimate use by the purchaser. TenCate Geosynthetics Americas disclaims any and all express, implied, or statutory standards, warranties or guarantees, including without limitation any implied warranty as to merchantability or fitness for a particular purpose or arising from a course of dealing or usage of trade as to any equipment, materials, or information furnished herewith. This document should not be construed as engineering advice.

Miramesh® is a registered trademark of Nicolon Corporation.

© 2013 Nicolon Corporation. All Rights Reserved.