

**Specifications for Removing and Replacing Damaged Cementitious
Roof Deck Panels**

Rev. April 2006

TECTUM Inc. • P.O. Box 3002 • Newark, OH 43058 • www.tectum.com • 1-888-977-9691

Procedures**Step 1:**

Determine the system:

- a) Plank with T&G sides and self support between purlins.
- b) Tile with support on sides with Bulb or Truss Tees. Check center to center of Bulb Tees and edge to edge. Tectum tiles must have 1/2" minimum bearing.

Step 2:

Accurately field measure panels to be replaced to nearest 1/16" in width and length to 1/4".

Step 3:

Determine thickness of substrate and insulation, if factory installed.

Step 4:

Determine the number of panels that do not meet the acceptance criteria of the designer or structural engineer.

Step 5:

Follow standard guidelines for protection of building contents and operations.

Step 6:

Remove damaged panels:

- a) Plank - Cut multiple span panels over each purlin. Remove attachment mechanism. Panels must be removed in pairs to maintain integrity of tongue and groove.
- b) Tile - Cut panels lengthwise in center, parallel to tees and remove. Clean grout from tees.

Step 7:

Replace panels:

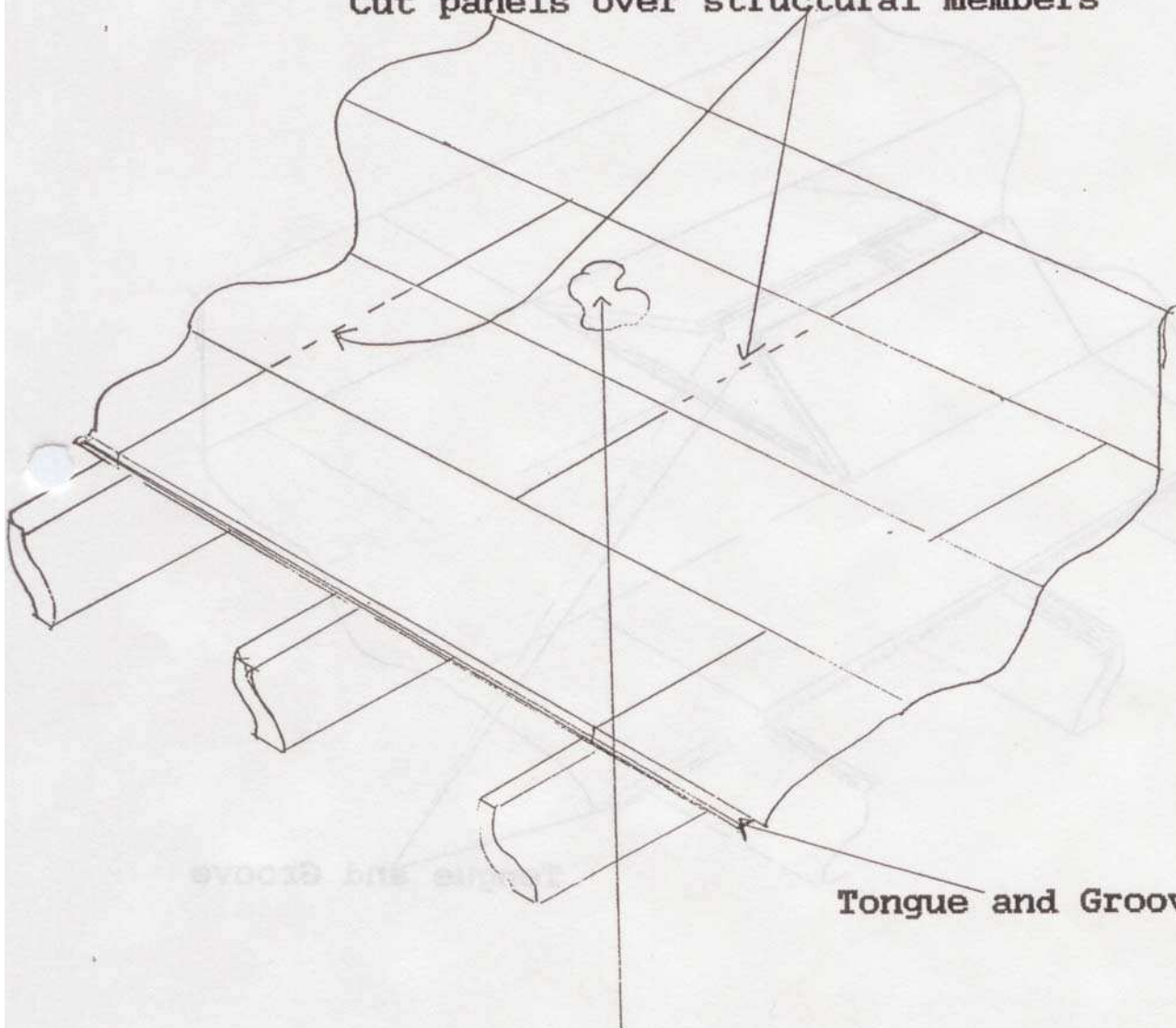
- a) Plank - Replace panels in pairs. Place right panel in tongue and groove and left panel in tongue and groove and fold down to purlin. If channel is required, it must be included in the installation. Screw down replacement and adjacent panels with factory recommended screws and 2" washers.
- b) Tile - insert panel and grout in place. Center tile on tees. Tile must have 1/2" bearing on each tee.

Step 8:

Install insulation as required and water proof repaired deck section by end of each work day.

Removing Tectum Roof Plank

Cut panels over structural members

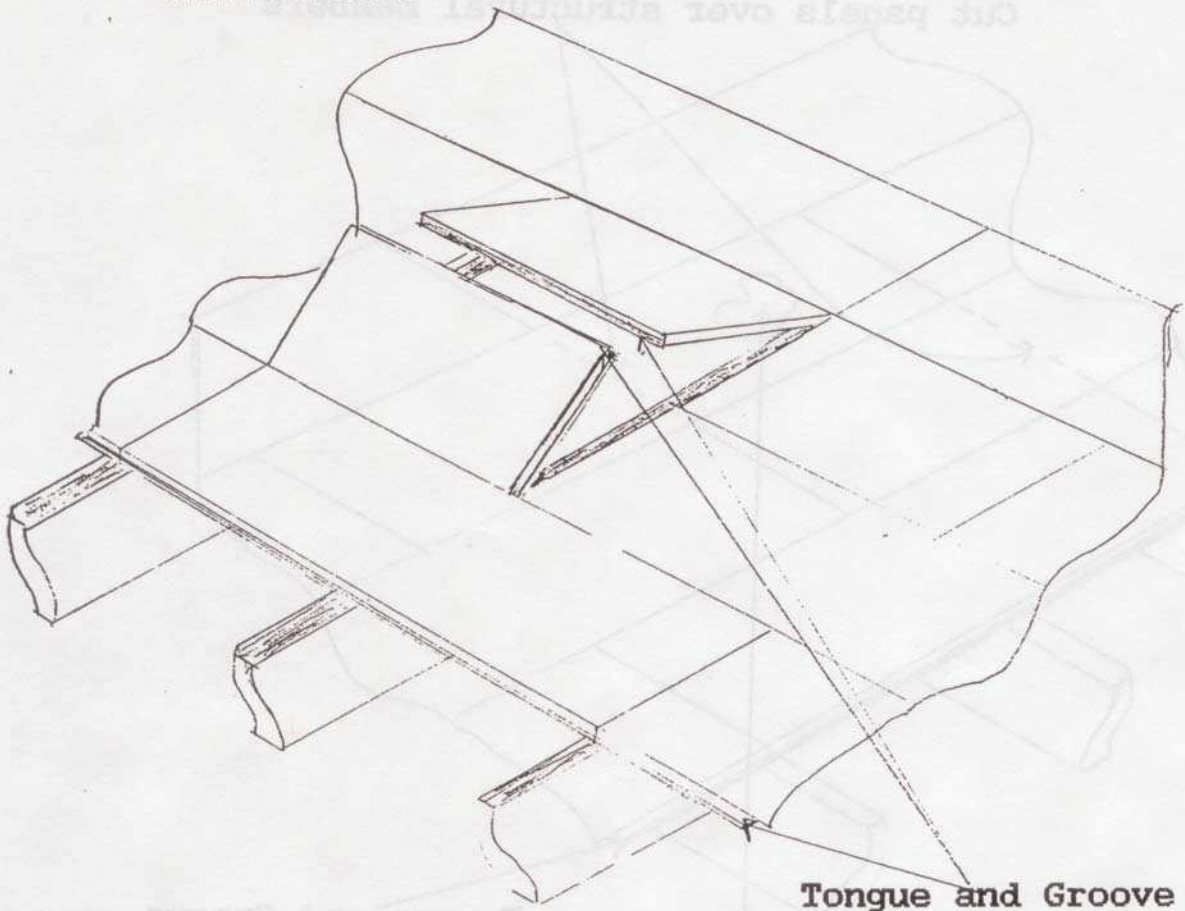


Tongue and Groove

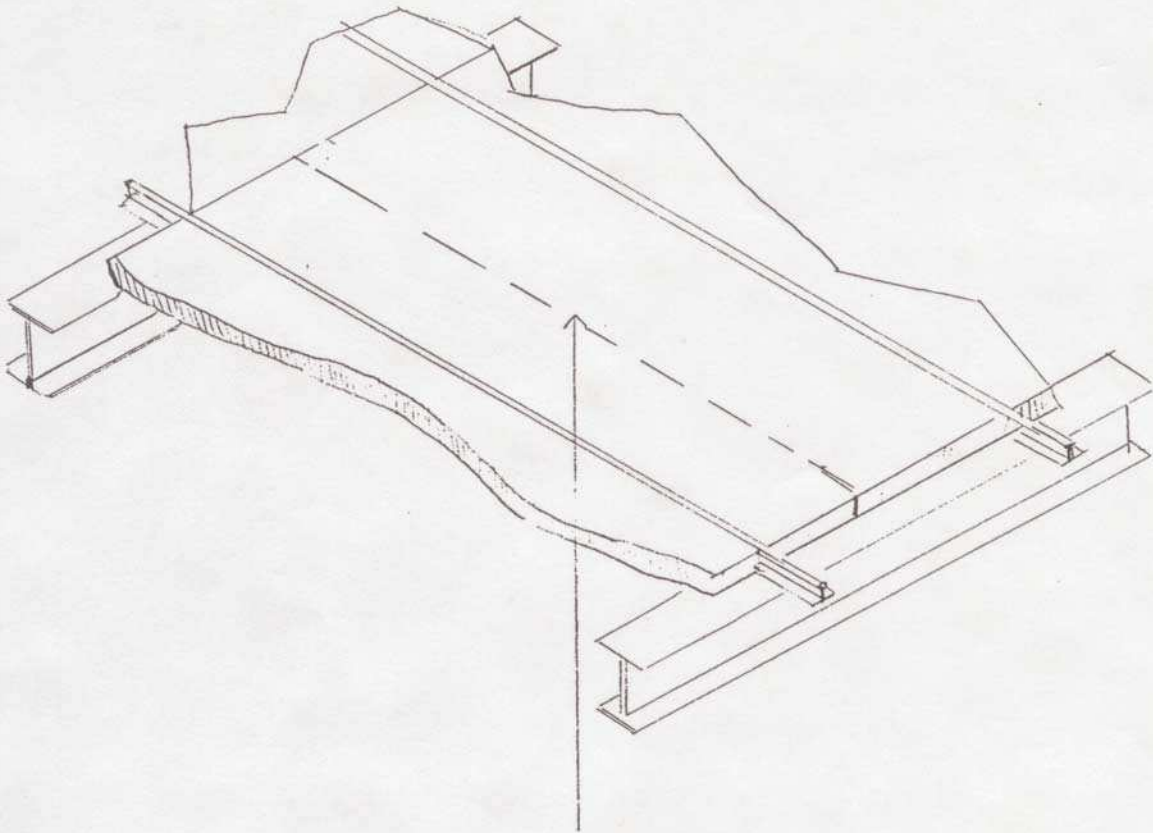
Plank section to be replaced

Replacing Tectum Roof Plank

Fold panel into place with the tongue and groove interlocked.



REMOVING TECTUM ROOF TILE



CUT PANEL PARALLEL TO TEES AND REMOVE