

BRIDGECLIP® - SECURES CHANNEL TO STUD

BridgeClip®, BC600 & BC800 secures BB150 or 1½” cold-rolled channel (CRC) to stud, resisting both lateral and twisting loads. Tabs on the bottom of a BridgeClip clamp on the BridgeBar® or CRC, while #10 screws attach the clips to a channel and/or stud through pre-drilled guide holes. Efficient installation is not the only benefit, as BridgeClip is engineered to accommodate loads that have traditionally been addressed with generic L2x2x16ga.

VALUE

- Fast installation
- No clamping
- No welding
- Guide holes provided for quick and accurate fastener placement
- Rounded edges for safety
- Laborers are working on installation, not cutting angle
- Certified, 50ksi steel, G90 galvanized coating
- 33 Mil thickness (BridgeClip)
- 43 Mil thickness (BC600 & BC800)

MATERIAL COMPOSITION

BridgeClip: ASTM A1003/A1003M Structural Grade 50 (340) Type H, ST50H (ST340H): 50ksi (340MPa) minimum yield strength, 65ksi (450MPa) minimum tensile strength, 33mil minimum thickness (20 gauge, 0.0346” design thickness) with ASTM A653/A653M G90 (Z275) hot dipped galvanized coating.

BC600 & BC800: ASTM A1003/A1003M Structural Grade 50 (340) Type H, ST50H (ST340H): 50ksi (340MPa) minimum yield strength, 65ksi (450MPa) minimum tensile strength, 43mil minimum thickness (18 gauge, 0.0451” design thickness) with ASTM A653/A653M G90 (Z275) hot dipped galvanized coating.

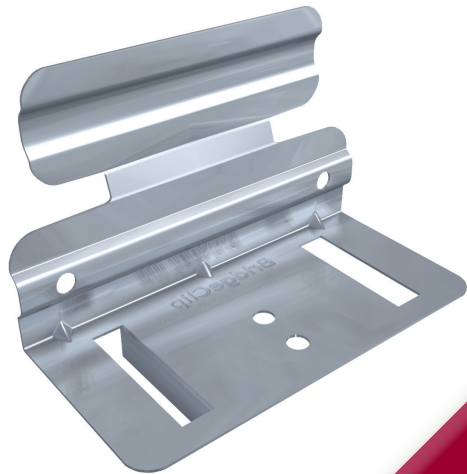
PART NUMBER	QTY/BOX	LBS/BOX	QTY/SKID	LBS/SKID
BridgeClip®	250	30	12,000	1,440
BC600	150	30	7,200	1,440
BC800	100	28	4,800	1,344

NOMENCLATURE

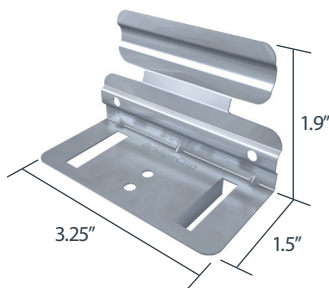
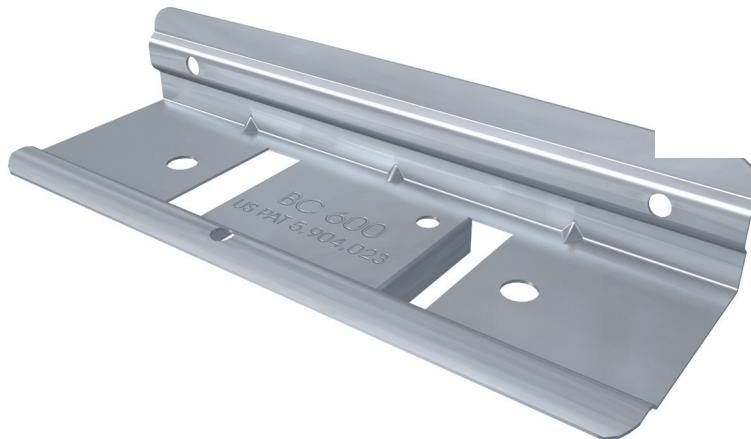
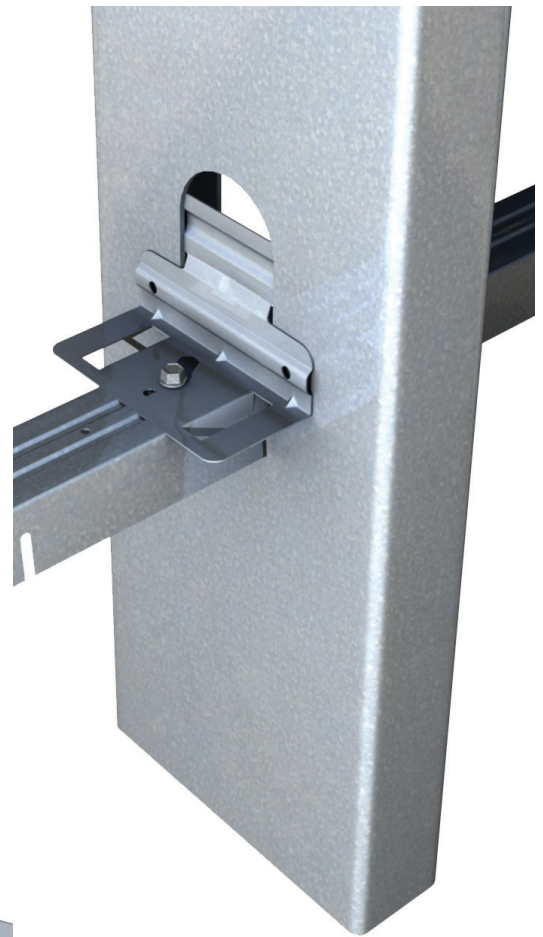
BridgeClip is available in 3½”, 6” and 8”. Designations are BridgeClip®, BC600 & BC800.

Example: 6” Stud

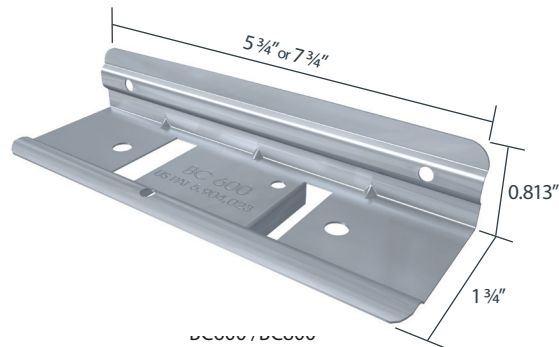
Designate: BC600



**BridgeClip®
easily handles
up to a 6" stud with
25 PSF loads with
only 1 screw!**



BRIDGECLIP



BC-600 / BC-600

Telling Industries provides its customers with TSN's complete line of cold formed steel connectors including, VertiClip®, DriftClip®, StiffClip®, BridgeClip®, BuckleBridge®, BridgeBar®, and BackIt®. Custom connectors are also available upon request.



VertiClip®, DriftClip®, StiffClip®, BridgeClip®, BuckleBridge®, BridgeBar®, BackIt®, MasterClip®, and MidWall® are registered trademarks of The Steel Network, Inc. (www.steelnetwork.com). The Steel Network, Inc. holds various patents for these products that can be found here <http://www.steelnetwork.com/site/Policies>.