

STIFFCLIP® LB - SPANDREL/MULTI-PURPOSE

The StiffClip® LB series connects exterior wall studs to the building's structure through a unique design incorporating the use of stiffened legs of a 90° angle to increase bending strength. StiffClip LB resists horizontal and vertical loads. The allowable design load table shown below is based on the use of StiffClip LB as it is attached to various steel stud depths, material thicknesses and yield strengths. Design loads consider loads on the clip and #12 screw fasteners to the stud web. Pre-drilled guide holes in each leg allow for greater installation efficiency.

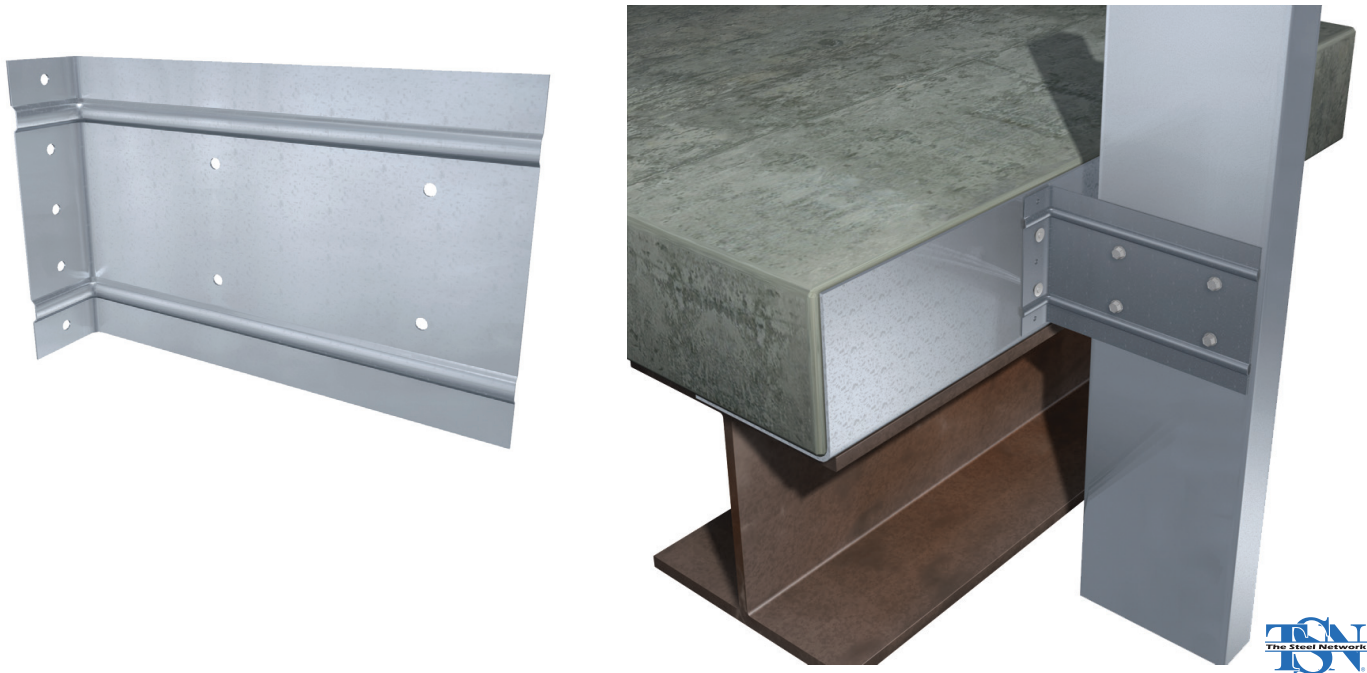
VALUE

- Leg stiffeners increase bending strength
- Various lengths allow for construction tolerance
- Replaces expensive bracing
- Resists vertical and horizontal loads
- Structurally load tested

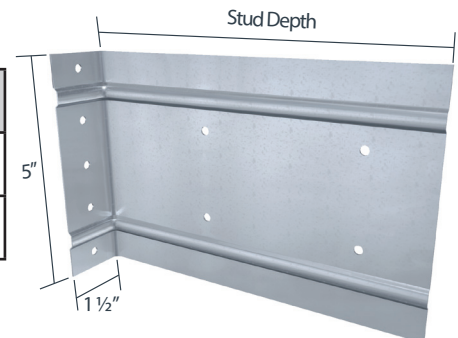
MATERIAL COMPOSITION

ASTM A1003/A1003M Structural Grade 50 (340) Type H, ST50H (ST340H): 50ksi (340MPa) minimum yield strength, 65ksi (450MPa) minimum tensile strength, 68mil minimum thickness (14 gauge, 0.0713" design thickness) with ASTM A653/A653M G90 (Z275) hot dipped galvanized coating.

The attachment of StiffClip to the primary structure may be made with PAF's, screw/bolt anchors or weld and is dependent upon the base material (steel or concrete) and the design configuration.



| PART NUMBER | QTY/BOX | LBS/BOX | QTY/SKID | LBS/SKID |
|-------------|---------|---------|----------|----------|
| LB600 | 50 | 38 | 4,500 | 3,420 |
| LB800 | 50 | 48 | 2,000 | 1,920 |



NOMENCLATURE

StiffClip LB is available for various stud depths. To specify, multiply stud depth by 100.

Example: 6" stud depth
Designate: StiffClip® LB600