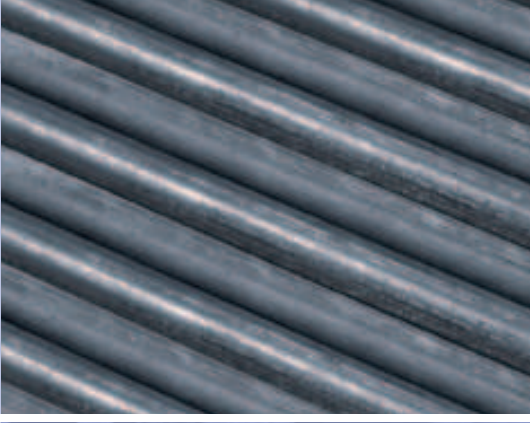
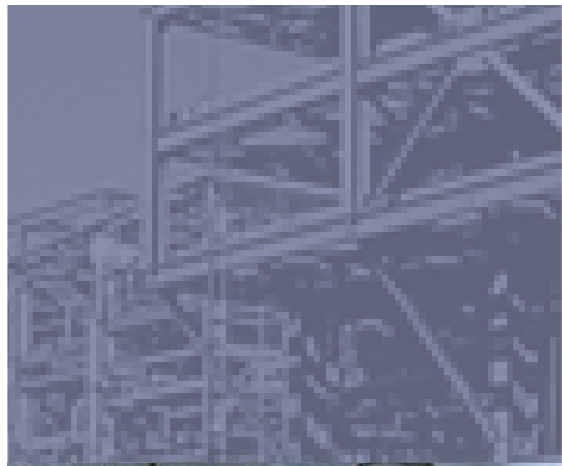




# WELDED WIRE REINFORCEMENT



# WELDED WIRE REINFORCEMENT

Tree Island Industries' quality WELDED WIRE REINFORCEMENT (WWR) is produced in sheets and rolls for the construction and pre-cast industries. All Tree Island Industries' Welded Wire Reinforcement is manufactured to strict industry standards and complies with ASTM A185 and CSG 3.0.



## STANDARD SHEETS

SPACING & GAUGE	SHEET/SIZE	SQ./SHEET	SHEET WEIGHT
6 x 6 x 10/10	7'6" x 20'	1.5	31 LBS.
6 x 6 x 8/8	7'6" x 20'	1.5	45 LBS.
6 x 6 x 6/6	7'6" x 20'	1.5	63 LBS.
6 x 6 x 4/4	7'6" x 20'	1.5	87 LBS.
4 x 4 x 6/6	7' x 20'	1.4	83 LBS.
4 x 4 x 4/4	7' x 20'	1.4	116 LBS.

## STANDARD ROLLS

SPACING & GAUGE	ROLL/SIZE	SQ./ROLL	ROLL WEIGHT
6 x 6 x 10/10	4' x 200'	8	168 LBS.
6 x 6 x 10/10	5' x 200'	10	210 LBS.
6 x 6 x 10/10	7'6" x 200'	15	315 LBS.
6 x 6 x 8/8	7'6" x 200'	15	450 LBS.
6 x 6 x 6/6	7'6" x 200'	15	630 LBS.

## WELDED WIRE FABRIC CROSS SECTIONAL AREA TABLE

WIRE SIZE	DIA. (in.)	AREA (sq. in.)	AREA PER FOOT OF WIDTH FOR VARIOUS SPACINGS (sq. in.) CENTER TO CENTER WIRE SPACING							
			2"	3"	4"	6"	8"	10"	12"	
W1.4 (10 gauge)	0.134	0.014	0.084	0.056	0.042	0.028	0.021	0.017	0.014	
W2 (8 gauge)	0.160	0.020	0.120	0.080	0.060	0.040	0.030	0.024	0.020	
W2.5 - D2.5 (7 gauge)	0.178	0.025	0.150	0.100	0.075	0.050	0.037	0.030	0.025	
W2.9 - D2.9 (6 gauge)	0.192	0.029	0.174	0.116	0.087	0.058	0.044	0.035	0.029	
W3.5 - D3.5	0.211	0.035	0.210	0.140	0.105	0.070	0.052	0.042	0.035	
W4 - D4 (4 gauge)	0.226	0.040	0.240	0.160	0.120	0.080	0.060	0.048	0.040	
W4.5 - D4.5	0.239	0.045	0.270	0.180	0.135	0.090	0.067	0.054	0.045	
W5 - D5	0.252	0.050	0.300	0.200	0.150	0.100	0.075	0.060	0.050	
W5.5 - D5.5	0.265	0.055	0.330	0.220	0.165	0.110	0.082	0.066	0.055	
W6 - D6	0.276	0.060	0.360	0.240	0.180	0.120	0.090	0.072	0.060	
W8 - D8	0.319	0.080	0.480	0.320	0.240	0.160	0.120	0.096	0.080	
W10 - D10	0.357	0.100	0.600	0.400	0.300	0.200	0.150	0.120	0.100	
W12 - D12	0.391	0.120	0.720	0.480	0.360	0.240	0.180	0.144	0.120	
W14 - D14	0.422	0.140	0.840	0.560	0.420	0.280	0.210	0.168	0.140	
W16	0.451	0.160	0.960	0.640	0.480	0.320	0.240	0.192	0.160	
W18	0.479	0.180	1.080	0.720	0.540	0.360	0.270	0.216	0.180	

# PIPE MESH AND FLEXICAGE



Tree Island Industries is capable of producing Pipe Mesh and Flexicage Mesh in all standard pipe formats. Flexicage expandable wires can elongate up to 140% of their original sinusoidal length. The Flexicage system conforms to all ASTM specifications for reinforcing wire, mesh, and pipe designs. Flexicage ensures accurate placing of reinforcement wires eliminating the chance of wrong wire gauge or crooked welding of bell hoops. Flexicage allows the bell to be flared to your exact dimensions.

# REBAR TIE WIRE

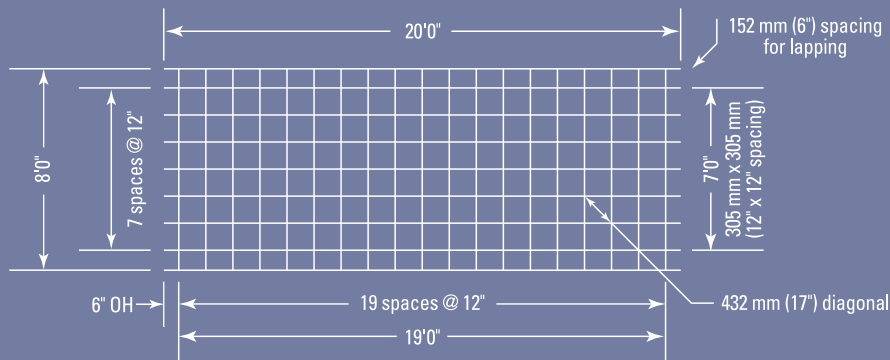


Tree Island Industries produces 16 gauge and 16.5 gauge black and 16 gauge polypropylene (PVC) coated rebar tie wire. This wire is FULLY ANNEALED REBAR TIE WIRE for use in the construction industry and is uniformly coiled and packaged to fit regular tie wire reels. Because our wire is specially annealed to produce soft wire, it has the flexibility for fast tying on the job. Coils have proper cores to allow pay-off without slippage.

GAUGE	APPROX. LIN./FT./CARTON	APPROX. CARTON/WEIGHT
16	4,800'	50 LBS.
16	7,600'	77 LBS.
16 1/2	8,000'	70 LBS.
16 Poly Coated	4,800'	48 LBS.

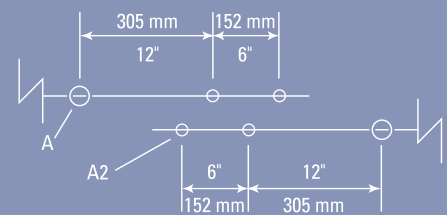
# "STEP THROUGH" WELDED WIRE REINFORCEMENT

- Slab on grade
- Typical floor and wall systems
- Topping slabs
- Architectural precast wall panels
- Tilt-up construction floor slabs and walls
- Shearwalls
- Retaining walls
- Thin concrete pours



**TREE ISLAND "STEP THOUGH" METHOD**  
Plan of Standard Size Sheet  
(non-standard dimensions available upon request)

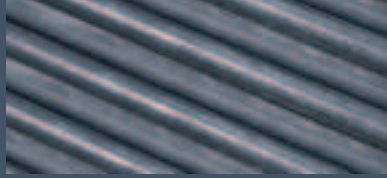
**EDGE LAP DETAIL**  
(showing edge lap savings)



FABRIC STYLE		A/2 EDGE IN <sup>2</sup>	STEEL AREA	WEIGHT	OLD STYLE WIRE GAUGE FABRIC WIDTH EQUALS A <sub>s</sub>
WIRE SPACING	WIRE SIZE		LONGITUDINAL AND TRANSVERSE IN <sup>2</sup> /ft.	POUNDS PER 100 sq. ft.	
LONGITUDINAL AND TRANSVERSE IN	"A" LONGITUDINAL AND IN <sup>2</sup>				
<b>"STEP THROUGH METHOD" DESIGN PROPERTIES (on basis of 8' width)</b>					
12"	W2.8	W1.4	.028	20	6 x 6 - 10/10
12"	W4	W2.0	.040	27	6 x 6 - 8/8
12"	W5.8	W2.9	.058	39	6 x 6 - 6/6
<b>"SUPER STEP THROUGH" DESIGN PROPERTIES (on basis of 8' width)</b>					
18"	W8.8	W4.4	.058	35	6 x 6 - 6/6
18"	W6.2	W3.1	.040	25	6 x 6 - 8/8
18"	W4.4	W2.2	.028	18	6 x 6 - 10/10

## REINFORCING PENCIL ROD

Tree Island Industries produces plain and deformed REINFORCING ROD for the construction industry. (Other sizes available upon request.)



SIZE & LENGTH	WIRE DIAM	WEIGHT/BUNDLE
1/4" x 20'	.250	2,000 LBS.
3/8" x 20'	.375	2,000 LBS.
1/2" x 20'	.500	2,000 LBS.

## MINE MESH

Tree Island Industries state of the art manufacturing process is capable of producing mesh that is "Flush Cut" on all four sides. This mesh is designed for the exacting standards of the Mining Industry. All mesh exceeds ASTM standards for weld shear strength.



## CONCRETE WIRE

Concrete wire is used in stirrup forming machines and as reinforcement in concrete pipe. Tree Island's concrete meets or exceeds ASTM A85 and ASTM A496 for deformed concrete wire.



**TREE ISLAND INDUSTRIES LTD.**  
Richmond, British Columbia

For information on these and other quality Tree Island products call:  
Local: (604) 524-3744 • Fax: (604) 523-4550 Toll Free: (800) 663-0955 or (800) 663-8757 USA  
Printed in Canada