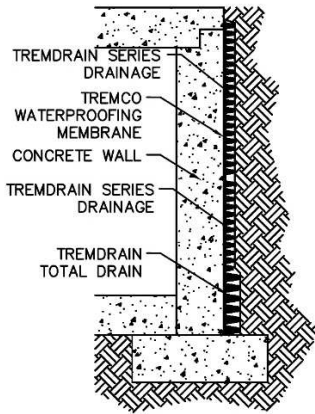
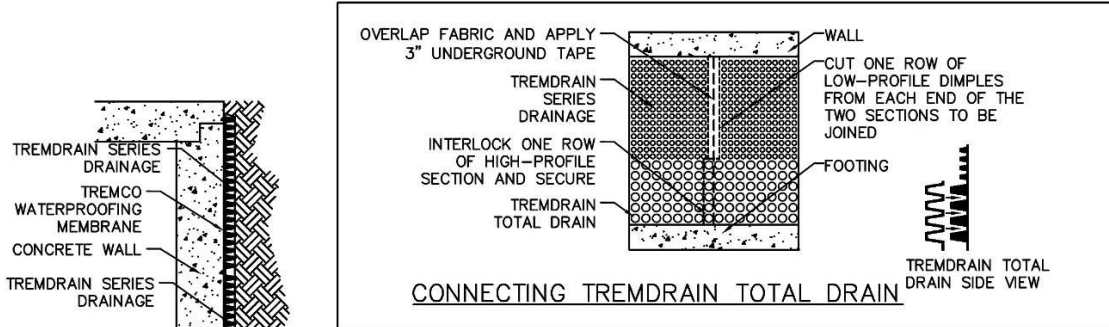


**APPLICATION DETAIL**

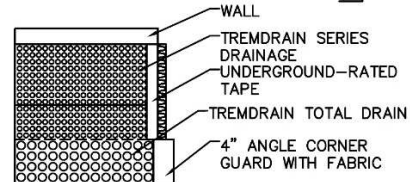
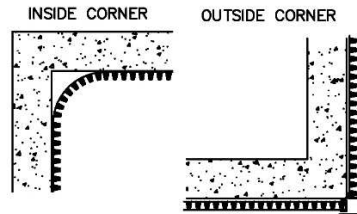
TREMDrain® Total Drain and Drainage Mats may be used with TREMproof® and Paraseal® waterproofing membranes to serve as both a protection course and replacement for traditional pipe and stone drainage systems. Consult your Tremco Representative for details appropriate for your job-site conditions.



INSTALL THE FIRST ROW OF TREMDRAIN TOTAL DRAIN AT THE BASE OF THE WALL WITH THE TREMDRAIN TOTAL DRAIN SECTION ATOP THE FOOTING.

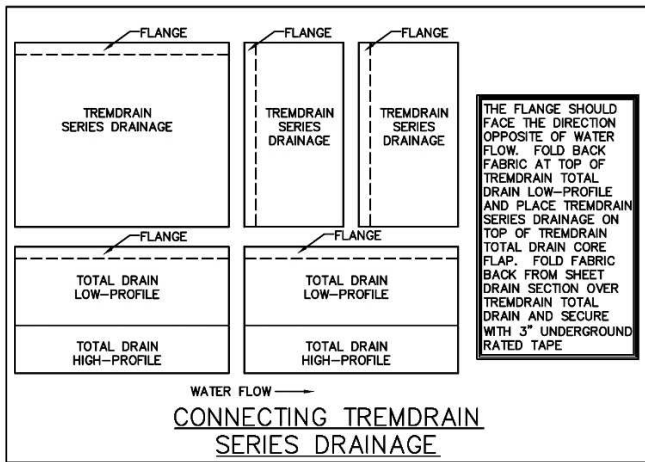
IF NOT USING TREMDRAIN SERIES DRAIN FOR FULL WALL COVERAGE, CLOSE TOP OF DRAIN TO PREVENT SOIL INTRUSION BY FOLDING FABRIC BEHIND DRAIN AND SECURING WITH 3" UNDERGROUND-RATED TAPE.

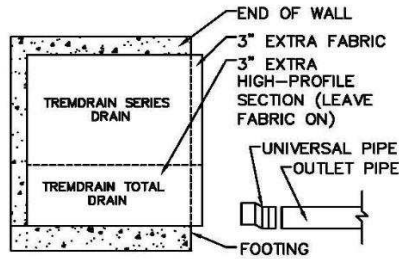
**INSTALLING FIRST ROW OF DRAIN**



BEND DRAIN TO MAKE INSIDE CORNERS. FOR OUTSIDE CORNERS, CUT THE TREMDRAIN SERIES DRAINAGE CORE FLUSH WITH THE CORNER AND TAPE EDGES. SLIT FABRIC ON TREMDRAIN TOTAL DRAIN SECTION, BEND AROUND CORNER, AND INSTALL 12" CORNER GUARD FITTING OVER SLIT OF TREMDRAIN TOTAL DRAIN. SECURE WITH UNDERGROUND-RATED TAPE.

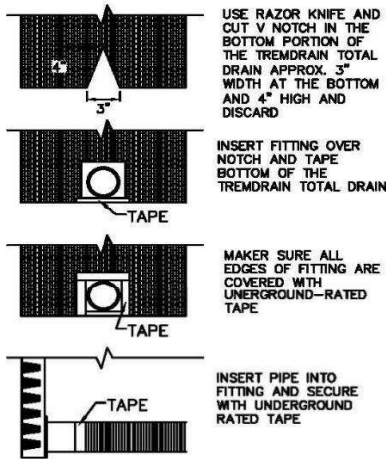
**GOING AROUND CORNERS**



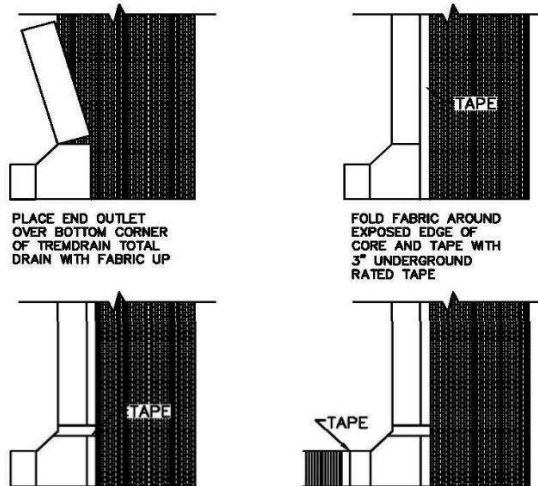


BEND DRAIN TO MAKE INSIDE CORNERS. FOR OUTSIDE CORNERS CUT AND BEND DRAIN TO REACH CORNER AND PROVIDE 3" EXTRA FABRIC TO WRAP AROUND CORNER. ATTACH DRAIN TO WALL AND OVERLAP FABRIC AT JOINT.

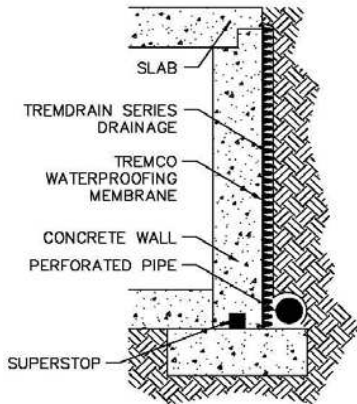
GOING AROUND CORNERS



UNIVERSAL TEE FITTINGS

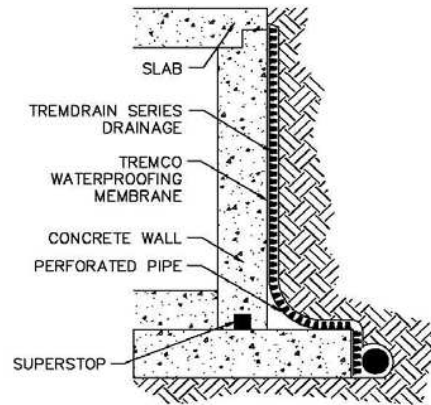


UNIVERSAL OUTLET FITTINGS



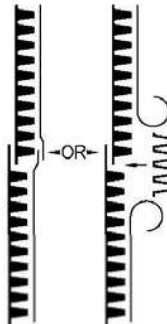
PIPE COLLECTION SYSTEM

FOR FOUNDATION WALLS WHERE A DRAIN PIPE IS USED, POSITION LOWER END OF CORE HORIZONTALLY ON GROUND. PEEL BACK FABRIC TO ALLOW DRAINAGE PIPE TO REST ON CORE. PLACE SMALL AMOUNT OF SELECT BACKFILL MATERIAL ON FABRIC TO HOLD IN PLACE UNTIL BACKFILL IS COMPLETED.



PIPE COLLECTION SYSTEM  
OPTIONAL CONSTRUCTION

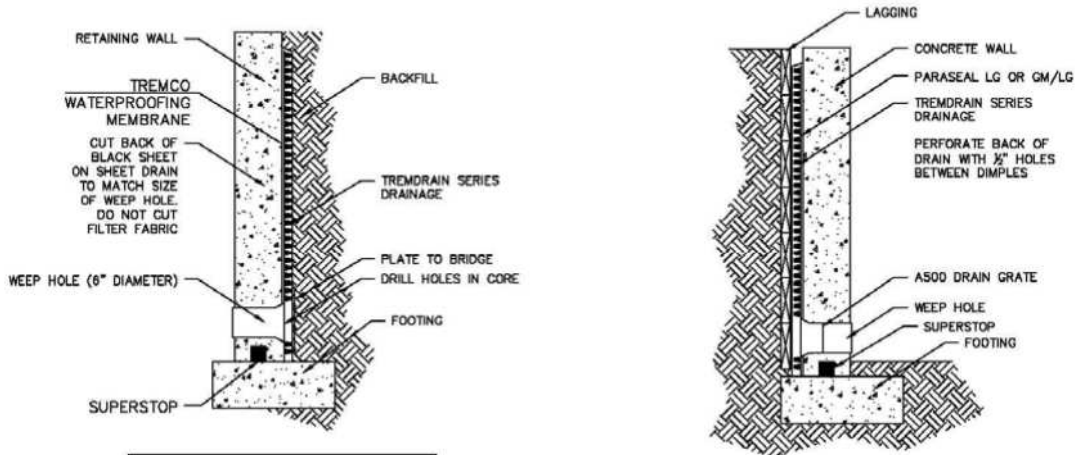
FOLD BACK EDGE OF FABRIC ON LOWER (DOWNSTREAM) DRAIN. DO NOT DETACH FROM DIMPLES. PLACE CONES OF UPPER (UPSTREAM) DRAIN OVER FLANGE OF LOWER DRAIN. OVERLAP FABRIC OF UPPER DRAIN OVER LOWER DRAIN. SEAL SEAM WITH 3" UNDERGROUND RATED TAPE.



OVERLAP DRAIN CORE AS SHOWN. PEEL BACK FABRIC EXPOSING TWO ROWS OF CONES. PLACE CONNECTOR OVER TWO ROWS OF CONES ON EACH SIDE OF JOINT. OVERLAP FABRIC OF UPPER DRAIN OVER LOWER DRAIN.

FOR EITHER METHOD, OVERLAP FABRIC IN DIRECTION OF WATER FLOW. USE TAPE OR SPRAY ADHESIVE, IF NECESSARY, TO KEEP FABRIC AT JOINT IN PLACE PRIOR TO BACKFILLING. ALL EDGES OF DRAIN SHOULD HAVE EXTRA FABRIC TUCKED BEHIND CORE EDGE TO PREVENT SOIL FROM ENTERING CORE.

ATTACHING NEXT ROLL  
OF SHEET DRAIN



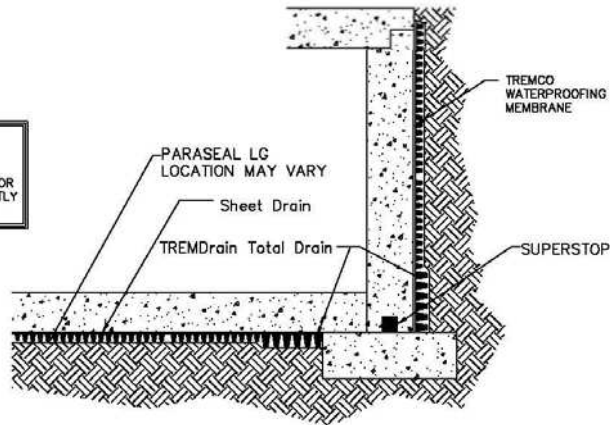
CUT BOTTOM OF DRAIN TO MATCH BOTTOM OF WALL (CUT 1/2" DIAMETER HOLES IN FLAT BACK OF CORE, OPPOSITE FABRIC) AT WEEP LOCATIONS. DO NOT CUT FABRIC. PLACE DRAIN ON WALL FABRIC TOWARD SOIL. TUCK EXTRA FABRIC AT DOWNSTREAM EDGE OF CORE. ATTACH DRAIN WITH APPROPRIATE ATTACHMENT METHOD.

RETAINING WALLS

PLACE DRAIN WITH FABRIC SIDE TOWARD SOIL TO BE DRAINED. CUT 1/2" DIAMETER HOLES ON FLAT BACK OF CORE AT DISCHARGE PIPE LOCATION. DO NOT CUT FABRIC. CONCRETE OR GUNNITE/SHOTCRETE MAY BE PLACED DIRECTLY AGAINST THE CORE SIDE OF THE DRAIN.

SHORING WALLS

POSITION TREMDRAIN TOTAL DRAIN AS SHOWN WITH GEOTEXTILE FACING SOIL. WATERPROOFING AND/OR FLOOR SLAB CAN BE APPLIED DIRECTLY TO THE BACK OF THE CORE.



INSTALLATION UNDER SLABS

0118/TDDSAD-DC

Please refer to our website at [www.tremcosealants.com](http://www.tremcosealants.com) for the most up-to-date application instructions.



**Tremco Commercial Sealants & Waterproofing**

3735 Green Rd  
Beachwood OH 44122  
216.292.5000 / 800.321.7906

1451 Jacobson Ave  
Ashland OH 44805  
419.289.2050 / 800.321.6357

220 Wicksteed Ave  
Toronto ON M4H1G7  
416.421.3300 / 800.363.3213

1445 Rue de Coulomb  
Boucherville QC J4B 7L8  
514.521.9555