

TREMCO®

Commercial Sealants & Waterproofing

Revolutionary, monolithic liquid polyurethane-methacrylate (PUMA) expansion Joint System with superior durability, excellent +/- movement capabilities, and quick curing for minimal downtime.

Expansion Joints
Exposed and/or Multi-Story
Parking Garages

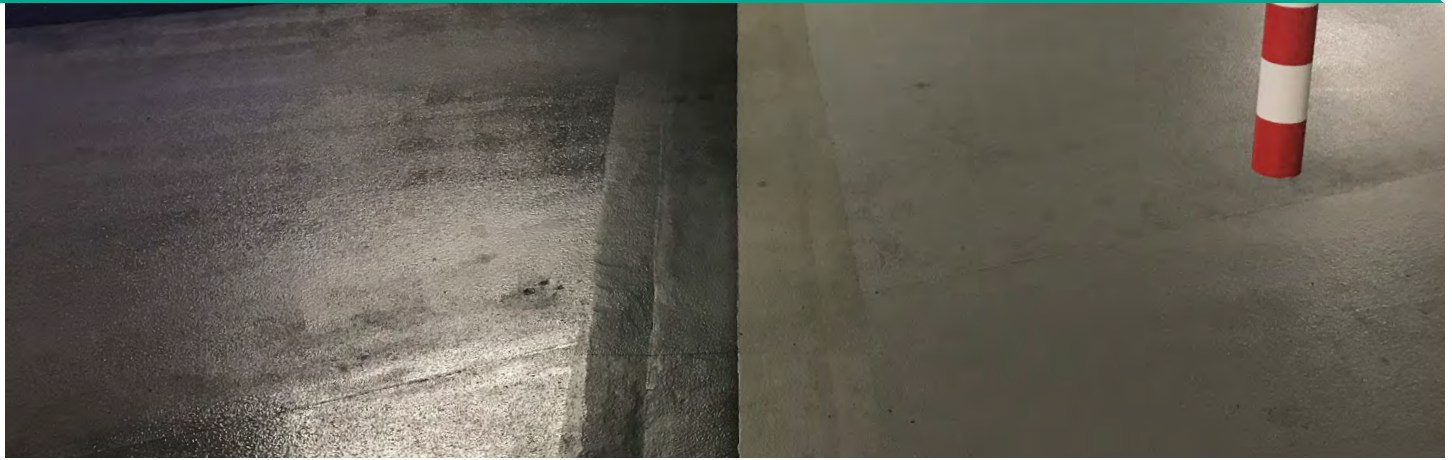
Tremco® PUMA Expansion Joint System (EJS)

System Features & Benefits

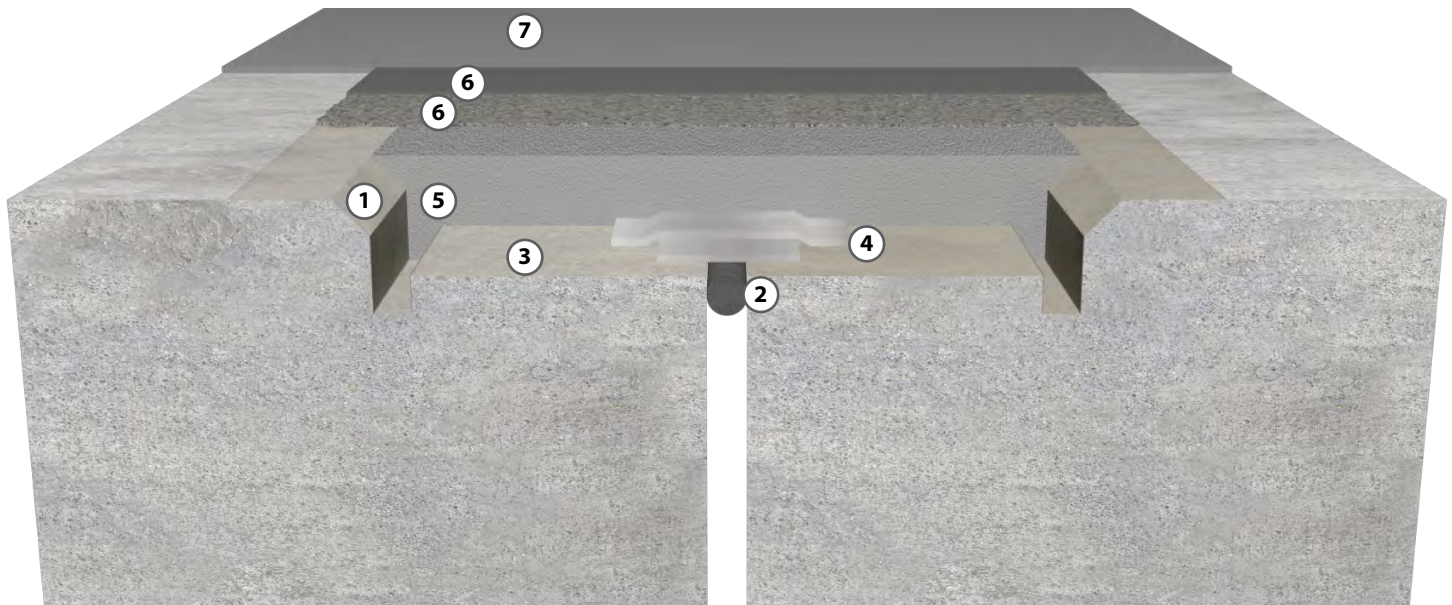
- Poured into Tremco's patent-pending Beveled Anchor Profile to sit completely flush with the surrounding deck, making it seamless and snag-free
- Multiple system configurations to accommodate most +/- movement requirements
- Waterproof and air-tight
- Offers significant sound, shock and vibration reduction compared to traditional mechanical expansion joint systems
- Open to vehicular traffic in as little as 1 hour after application completion — and applied in temperatures as low as to 20 °F (-7 °C) to eliminate costly shutdowns
- Extreme durability stands up to heavy vehicular traffic, including snow plows
- Excellent abrasion and chemical resistance
- Industry-leading leak-free warranty (terms dependent on system configuration)
- Compatible with Tremco-approved PUMA (polyurethane-methacrylate) and urethane coatings and sealants
- Zero Volatile Organic Compounds (VOCs)

EXPANSION JOINT SYSTEMS

TREMCO PUMA EJS SYSTEM APPLICATION



TREMCO PUMA EJS SYSTEM OVERVIEW



Tremco PUMA EJS

Comments

1	Tremco Beveled Anchor Profile	Patent-pending profile that features anchor cuts and 45° beveled cuts for maximum adhesion to surrounding concrete.
2	Joint Backing Material	Backer rod, ExoAir® LEF or other Tremco-approved backing material.
3	Tremco PUMA Primer	Applied at 17 mils. Mixed with Tremco PUMA Initiator.
4	Aluminum Tapes	Aluminum butyl-backed tape applied over the throat, followed by aluminum heat-resistant tape. Larger throats might require a metal plate in lieu of the butyl-backed tape.
5	Tremco PUMA EJ Basic	Joint compound material mixed with Tremco PUMA Initiator.
6	Tremco PUMA TC	Two coats. Lightly broadcast silica sand (16-30 mesh) into the first wet topcoat.
7	Traffic Coating System	Optional. Must be compatible with Tremco PUMA EJS.

Information may vary by region. For specific information, please contact your local Tremco CSW representative.

ExoAir®, Tremco®, and TREMproof® are registered trademarks of Tremco Incorporated. Use of the ® symbol indicates registration with the US Patent & Trademark Office and the Canadian Intellectual Property Office.

PUMAEJS/0719