

PUVA
TECHNOLOGY



Flexible Methacrylate Waterproofing

Vulkem® EWS Traffic Coatings • TREMproof® PUMA Below-Grade Membranes



TREMCO
Commercial Sealants & Waterproofing

PUMA TECHNOLOGY

PUMA technology provides superior elongation over traditional MMA/PMMA technology systems. These rapid curing systems feature extreme durability, fast cure independent of low temperature, crack bridging, tenacious adhesion and superior abrasion resistance.

COLD WEATHER APPLICATION



CRACK BRIDGING



PUMA

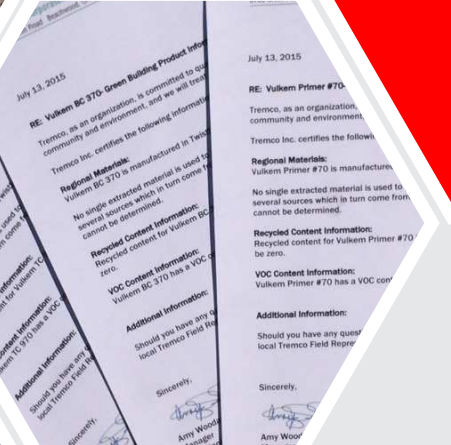
MMA



SUPERIOR ELONGATION



COMPATIBLE WITH TREMCO SEALANTS AND COATINGS



ZERO VOLATILE ORGANIC COMPOUNDS

PEACE OF MIND GUARANTEE

Our all-inclusive warranties provide confidence that your project's systems are backed by a company with more than 85 years' experience, success and proven performance in the industry. Tremco warranties are available to include seamless connections to adjacent building envelope components to create single-source, warranted, tested systems.

TESTED • PROVEN • WARRANTED



PUMA TECHNOLOGY SYSTEM COMPONENTS

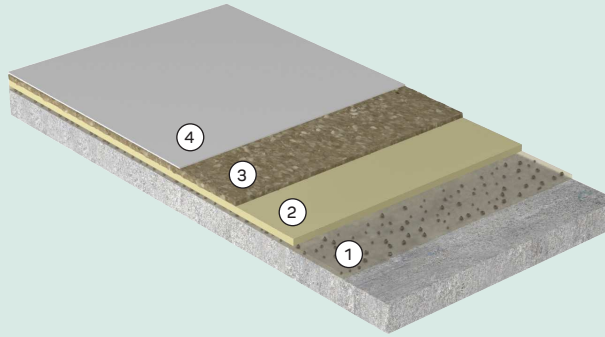
- **Tremco PUMA Primer** - A methyl-methacrylate (MMA), two-component primer for porous and non-porous substrates.
- **Tremco PUMA Initiator** - A benzoyl peroxide-based powder used to react all components of Tremco PUMA systems.
- **Tremco PUMA BC** - A modified polyurethane-methacrylate (PUMA) base coat that bonds firmly to Tremco PUMA Primer and retains its integrity regardless of substrate movement up to 1/16". Available in self-leveling, roller and trowel grade. *(Also available in a low-modulus grade.)*
- **Tremco PUMA WC** - A modified polyurethane-methacrylate (PUMA) wear coat, loaded with aggregate to give the system excellent impact, abrasion and chemical resistance.
- **Tremco PUMA Filler Powder** - A crystalline silica powder used in conjunction with Tremco PUMA WC.
- **16 to 20 mesh silica sand, color quartz, aluminum oxide (bauxite)** - Used as a component with PUMA Primer, PUMA WC and PUMA TC. *(Supplied by others.)*
- **Tremco PUMA TC** - A methyl-methacrylate (MMA) top coat that offers excellent abrasion resistance, UV stability and chemical resistance system. *(Available in gray, slate gray, clear and tintable.)*

Vulkem® EWS Traffic Coatings

Rapid turn around, high-performance coatings with tenacious adhesion and extreme abrasion resistance

PEDESTRIAN SYSTEMS

Stadiums, Balconies and Pool Decks

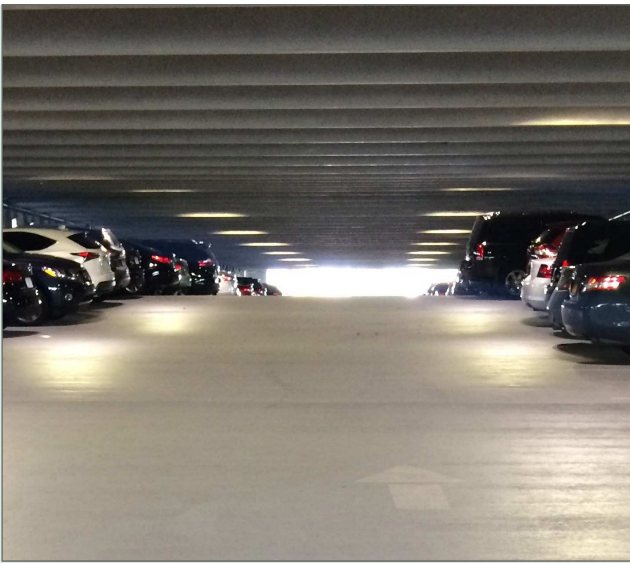


Product	Coverage Rate	Wet Mils	Comments
1 Tremco PUMA Primer	90 ft ² /gal	17	Broadcast 25 to 50 mesh silica sand at a rate of 7 lb per 100 ft ² into wet primer.
2 Tremco PUMA BC	26 ft ² /gal	60	Allow 45 minutes to cure before proceeding.
3 Tremco PUMA TC	90 ft ² /gal	17	Broadcast silica sand or color quartz to refusal into wet TC . Allow 45 minutes to cure before proceeding.
4 Tremco PUMA TC	64 ft ² /gal	25	Absent of aggregate. Allow 45 minutes to cure before opening to traffic.



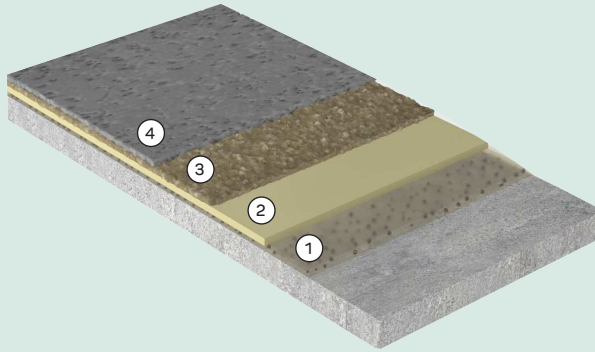
Vulkem® EWS Traffic Coatings

Rapid turn around, high-performance coatings with tenacious adhesion and extreme abrasion resistance



VEHICULAR SYSTEMS

Parking Structures, High-Wear Turn and Drive Lanes, Helical Ramps and Ticket Spitters



Product	Coverage Rate	Wet Mils	Comments
1 Tremco PUMA Primer	90 ft ² /gal	17	Broadcast 25 to 50 mesh silica sand at a rate of 7 lb per 100 ft ² into wet primer.
2 Tremco PUMA BC	20 ft ² /gal	80	Allow 45 minutes to cure before proceeding.
3 Tremco PUMA WC with PUMA filler powder	25 ft ² /gal	65	Broadcast 16 to 20 mesh silica sand to refusal. Allow 45 minutes to cure before proceeding.
4 Tremco PUMA TC	64 ft ² /gal	25	Absent of aggregate. Allow 45 minutes to cure before opening to traffic.



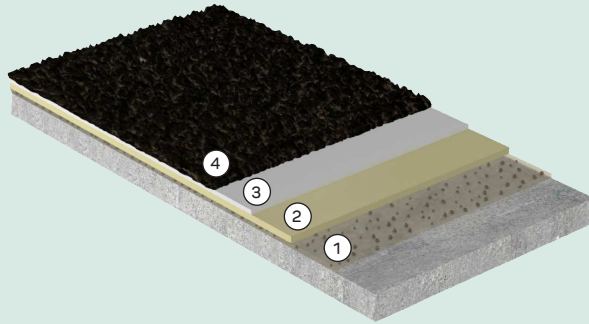
BE
A
L
E
C
D
E
F
E
V

Vulkem[®] EWS Traffic Coatings

Rapid turn around, high-performance coatings with tenacious adhesion and extreme abrasion resistance

HEAVY DUTY SYSTEM

Parking Structures Affected by Snow Plows,
Dumpster Areas and Loading Docks



Product		Coverage Rate	Wet Mills	Comments
1	Tremco PUMA Primer	90 ft ² /gal	17	Broadcast 25 to 50 mesh silica sand at a rate of 7 lb per 100 ft ² into wet primer.
2	Tremco PUMA BC	20 ft ² /gal	80	Allow 45 minutes to cure before proceeding.
3	Tremco PUMA WC with PUMA filler powder	16 ft ² /gal	100	Broadcast aluminum oxide (bauxite) to refusal. Allow 45 minutes to cure before proceeding.
4	Tremco PUMA TC	64 ft ² /gal	25	Absent of aggregate. Allow 45 minutes to cure before opening to traffic.



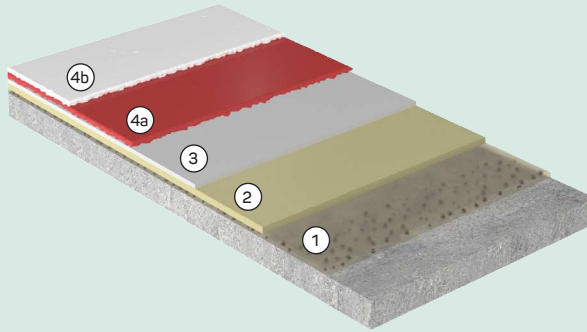
Vulkem® EWS Traffic Coatings

Rapid turn around, high-performance coatings with tenacious adhesion and extreme abrasion resistance



HELIPAD SYSTEM

Durable Solution With Custom Color Options



Product	Coverage Rate	Wet Mils	Comments
1 Tremco PUMA Primer	90 ft ² /gal	17	Broadcast 25 to 50 mesh silica sand at a rate of 7 lb per 100 ft ² into wet primer.
2 Tremco PUMA BC	20 ft ² /gal	80	Allow 45 minutes to cure before proceeding.
3 Tremco PUMA WC with PUMA filler powder	25 ft ² /gal	65	Broadcast 16 to 20 mesh silica sand to refusal. Allow 45 minutes to cure before proceeding.
4a Tremco PUMA TC	64 ft ² /gal	25	Absent of aggregate. Allow 45 minutes to cure before opening to traffic.
4b Tremco PUMA TC	64 ft ² /gal	25	Absent of aggregate. Allow 45 minutes to cure before opening to traffic.

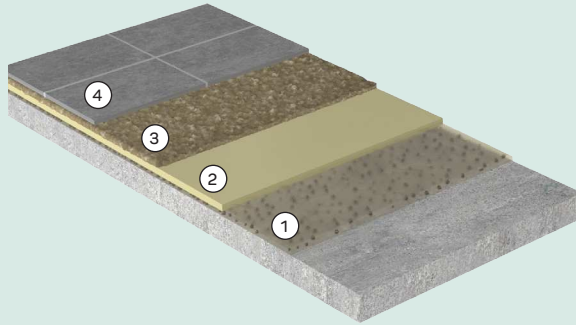


Vulkem® EWS Specialty Coatings

Long-term waterproofing solutions for water features and bonded overburden applications

UNDER TILE SYSTEM

Tile, Pavers and Bonded Overburden



Product	Coverage Rate	Wet Mils	Comments
1 Tremco PUMA Primer	90 ft ² /gal	17	Broadcast 25 to 50 mesh silica sand at a rate of 7 lb per 100 ft ² into wet primer.
2 Tremco PUMA BC	20 ft ² /gal	80	Allow 45 minutes to cure before proceeding.
3 Tremco PUMA TC	80 ft ² /gal	20	Broadcast 20 to 50 mesh silica sand into the wet TC to refusal. Allow 60 minutes to cure before proceeding with tile.
4 Overburden	N/A	N/A	Tile or pavers.



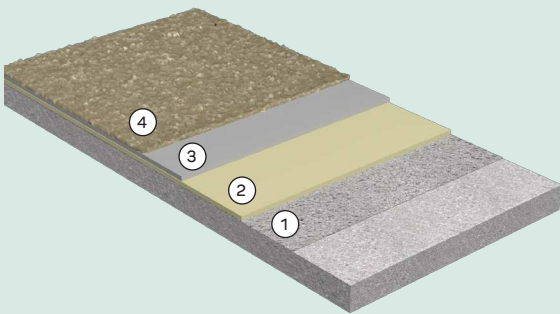
Vulkem® EWS Specialty Coatings

Long-term waterproofing solutions for water features and bonded overburden applications



WATER FEATURES SYSTEM

Fountains, Pools, Splash Pads and Decorative Water Features



Product	Coverage Rate	Wet Mils	Comments
1 Tremco PUMA Primer	90 ft ² /gal	17	Broadcast 25 to 50 mesh silica sand at a rate of 7 lb per 100 ft ² into wet primer.
2 Tremco PUMA BC	20 ft ² /gal	80	Allow 45 minutes to cure before proceeding.
3 Tremco PUMA TC	80 ft ² /gal	20	Allowing 60 minutes to cure before proceeding. Optional: Broadcast 20 to 50 mesh silica sand into the wet TC to refusal if overburden will be applied.
4 Overburden (optional)	N/A	N/A	Tile or pool finish.



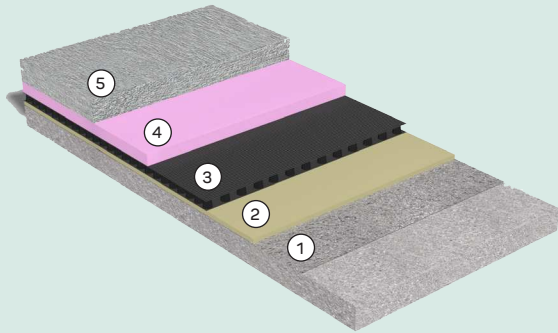
TREMproof® PUMA Below-Grade Waterproofing Coatings

Premium systems for waterproofing concrete and protecting occupied space from water damage

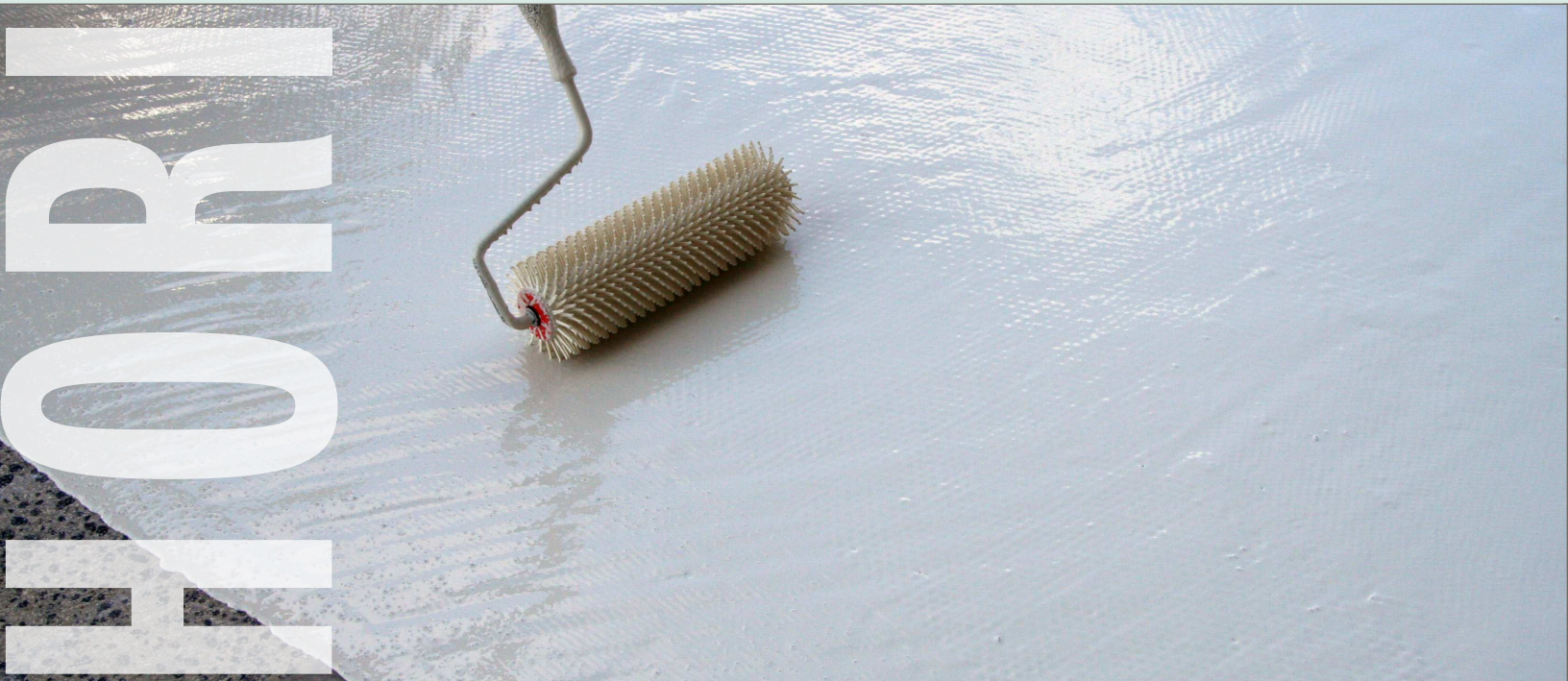
HORIZONTAL
FOR

HORIZONTAL WATERPROOFING SYSTEMS

Split Slab, Paver Systems, Planters and Vegetated Roofs



Product	Coverage Rate	Wet Mils	Comments
1 Tremco PUMA Primer	90 ft ² /gal	17	Broadcast 25 to 50 mesh silica sand at a rate of 7 lb per 100 ft ² into wet primer.
2 Tremco PUMA BC	20 ft ² /gal	80	Allow 45 minutes to cure before proceeding.
3 TREMDrain (optional)	N/A	N/A	TREMDrain 1000, TREMDrain 2000 or TREMDrain 6600 bonded to membrane with Dymonic 100.
4 Compatible Insulation (optional)	N/A	N/A	By others.
5 Overburden	N/A	N/A	Topping slab, pavers, or growing media.



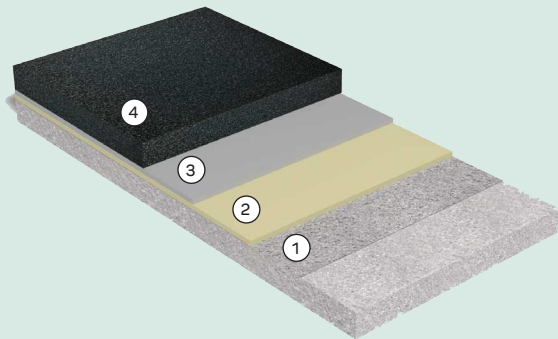
TREMproof® PUMA Below-Grade Waterproofing Coatings

Premium systems for waterproofing concrete and protecting occupied space from water damage

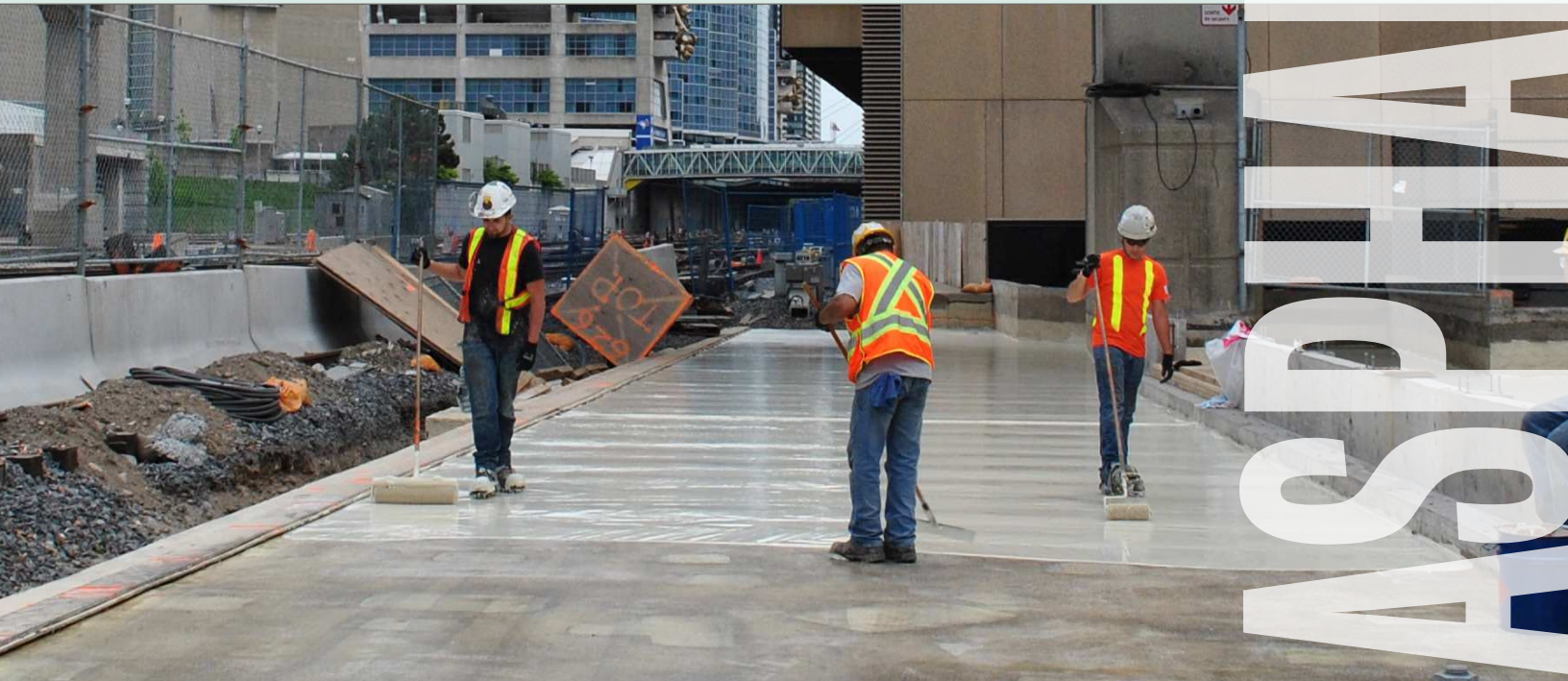


ASPHALT OVERLAY

Parking Structures



Product		Coverage Rate	Wet Mils	Comments
1	Tremco PUMA Primer	90 ft²/gal	17	Broadcast 25 to 50 mesh silica sand at a rate of 7 lb per 100 ft² into wet primer.
2	Tremco PUMA BC	20 ft²/gal	80	Allow 45 minutes to cure before proceeding.
3	Tremco PUMA TC	64 ft²/gal	25	Broadcast 6 to 8 grit silica sand at a rate of 3 lb per 10 ft². Allow 60 minutes to cure before proceeding.
4	Overburden	N/A	N/A	Asphalt.



LEADER TESTED
 TRUSTED PARTNER
 CUSTOM SOLUTIONS
 BUILDING SCIENCE
 SINGLE -SOURCE
 LEADER SINCE 1928
 PROVEN PERFORMANCE
 TECHNICAL SERVICE
 BUILDING SCIENCE
 INTEGRATED DESIGN
 CUSTOM SOLUTIONS
 SYSTEMS
 CUSTOM SOLUTIONS
 CUSTOM SITE SUPPORT
 LEADER
 SOLUTIONS
 SINGLE -SOURCE
 CONNECTIONS
 INNOVATIVE COMPATIBLE
 RESTORATION
 RELIABLE SINCE 1928
 PROBLEM SOLVERS
 PROVEN EXPERIENCE
 PERFORMANCE CONNECTIONS
 TRUSTED LEADER
 PARTNER SINCE 1928
 CONNECTIONS RELIABLE
 CUSTOM SOLUTIONS
 SITE SUPPORT
 SUSTAINABLE EXPERIENCE
 RESTORATION WARRANTED
 SINCE 1928 SITE SUPPORT
 COMPATIBLE
 CUSTOM SOLUTIONS
 TRUSTED PARTNER
 TECHNICAL SERVICE
 INTEGRATED DESIGN
 TESTED SINCE 1928
 SYSTEMS
 INNOVATIVE SINGLE-SOURCE
 PROVEN PERFORMANCE

TREMCO®

Commercial Sealants & Waterproofing

3735 Green Road, Beachwood, OH 44122
Phone: 216.292.5000 • 800.321.7906

220 Wicksteed Avenue, Toronto, ON M4H 1G7
Phone: 416.421.3300 • 800.363.3213