



TREMCO®

VEGETATED ROOFING PROGRAM

VR HYDRAMAX VEGETATED ROOFING ASSEMBLIES

A vegetated roof from Tremco Incorporated is one of the most environmentally responsible, attractive and cost-effective solutions available to meet the needs of architects, building owners and facility managers for sustainable construction and management.

No matter which system is right for you, your vegetated roof can play a vital role in making your building more sustainable and lowering operating costs by:

- helping manage water discharge
 - increasing energy efficiency
 - improving air quality
 - increasing the roof's lifecycle
 - enhancing overall appearance and therefore creating value
 - reducing occupant stress
 - helping to attain LEED certification
- Start your vegetated roof with a proven reliable fluid-applied, monolithic waterproofing membrane that will protect the structure below it and provide a durable base.
- *TREMproof 6100 Hot Rubberized Asphalt Waterproofing Membrane* is a one-part, 100% solids, hot-applied, rubberized asphalt waterproofing membrane that has been trusted in waterproofing applications for over 40 years.
 - With construction time lines constantly accelerating, *TREMproof 250GC Cold Fluid-Applied Elastomeric Waterproofing Membrane* is a waterproofing membrane that can be installed on green and damp concrete, or in as few as 24 hours after removing concrete forms.

No other company offers Tremco's commitment to simplicity, sustainability, single source responsibility and comprehensive protection through long-term warranties.

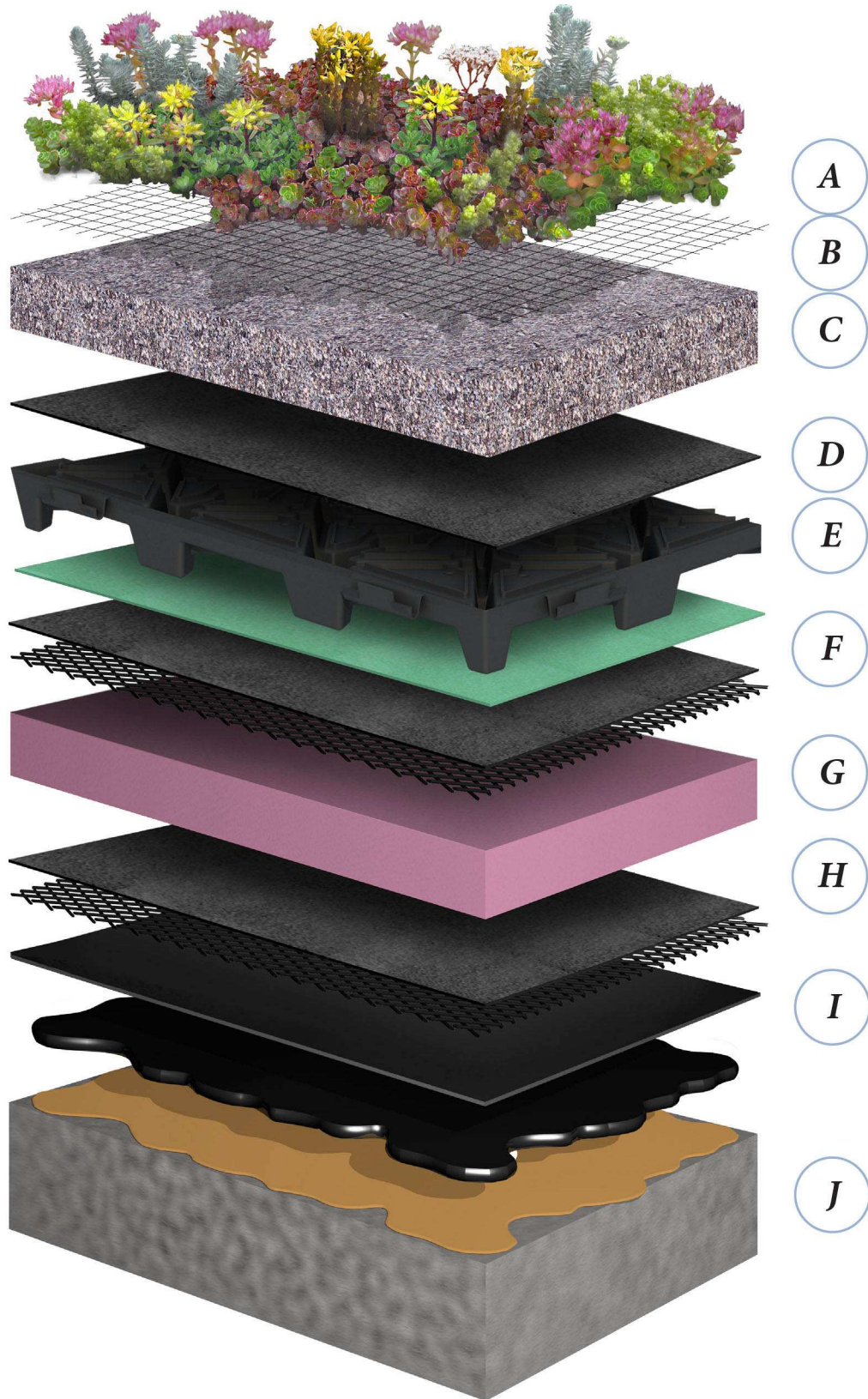
When it comes to vegetated roofing, Tremco makes it easier than anyone else!

TREMCO®

SYSTEM DETAILS

VR HYDRAMAX

VEGETATED ROOFING ASSEMBLIES



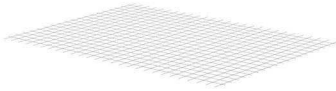
VR HYDRAMAX

A VEGETATION



SEDUM CUTTINGS
SEDUM PLUGS
SEDUM CARPET
MEADOW AND WILDFLOWERS
PERENNIALS
ORNAMENTAL GRASSES
SELECT SHRUBS
TREES

B EROSION CONTROL NETTING



VR TERRAHOLD

C ENGINEERED GROWING MEDIA



VR AEROMIX EXTENSIVE



VR HYDRAMIX INTENSIVE



VR PLANTERMIX

D FILTER FABRIC



VR FILTER FABRIC

E RETENTION/DRAINAGE/AERATION LAYER



VR HYDRAPANEL 0.40

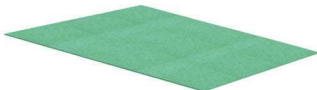


VR HYDRAPANEL 1.25
VR HYDRAPANEL 1.25 (FILLED)



VR HYDRAPANEL 2.0
VR HYDRAPANEL 2.0 (FILLED)

F MOISTURE LAYER + AIR LAYER (OPTIONAL)



VR MOISTUREMAT



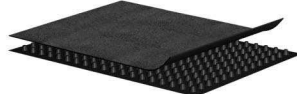
VR TREMDRAIN 22F

G EXTRUDED POLYSTYRENE INSULATION

H FILTER FABRIC + AIR LAYER (OPTIONAL)



VR TREMDRAIN 22F



VR TREMDRAIN 40FD

I ROOT BARRIER



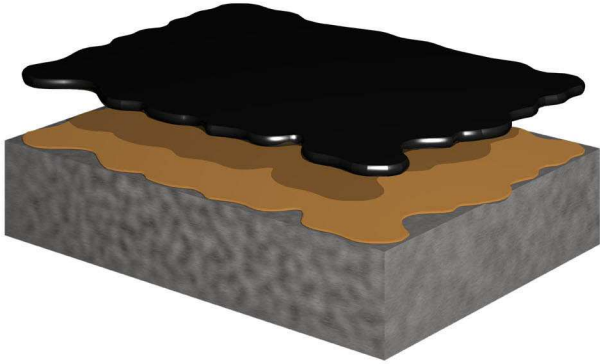
VR ROOTBLOC 10



VR ROOTBLOC 40

J TREMPROOF WATERPROOFING SYSTEM

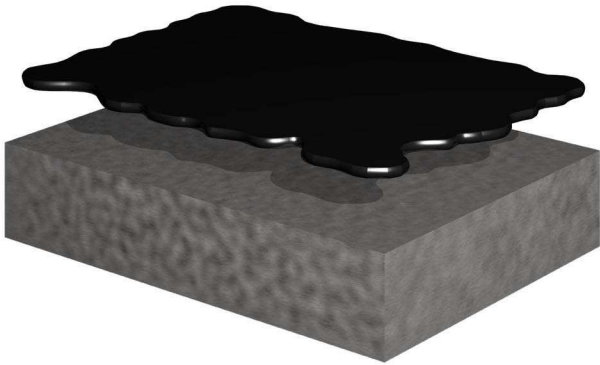
COMPLEMENTARY WATERPROOFING ASSEMBLIES



TREMproof 6100

HOT RUBBERIZED ASPHALT

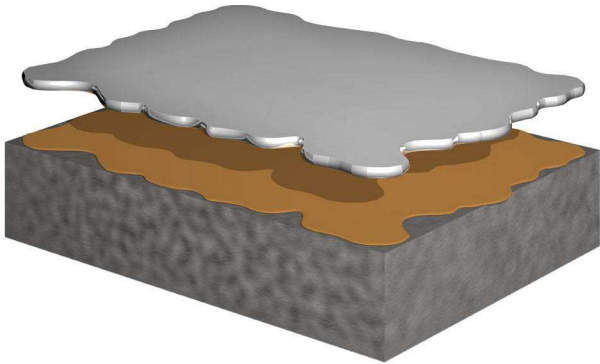
- 215 MIL SELF-HEALING MODIFIED ASPHALT
- COLD-TEMPERATURE APPLICATION FLEXIBILITY
- 40-YEAR TRACK RECORD
- COMPLIES WITH CGSB 37GP 50M SPECIFICATION



TREMproof 250GC

COLD-APPLIED ELASTOMERIC WATERPROOFING MEMBRANE

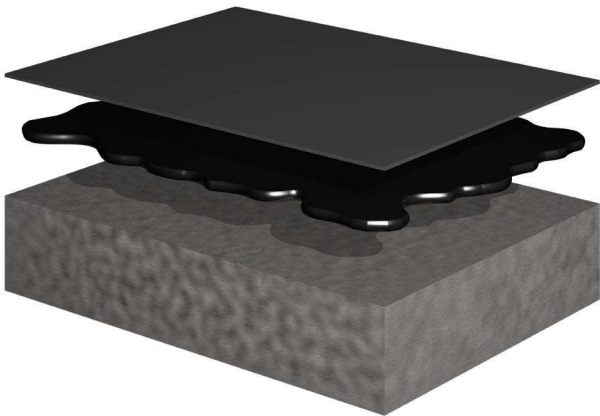
- 120 MIL SINGLE-LIFT APPLICATION
- 215 MIL HIGH-BUILD OPTION
- DAMP AND GREEN CONCRETE APPLICATION
- NO REINFORCING FABRIC REQUIRED
- SIGNIFICANT LABOR SAVINGS



TREMproof PUMA

POLYURETHANE-METHACRYLATE (PUMA) TECHNOLOGY

- 30-TO-45 MINUTE CURE TIME BETWEEN COATS; ABILITY TO PROCEED TO OVERBURDEN 1 HOUR AFTER APPLICATION
- EXTREME DURABILITY WITH EXCEPTIONAL CRACK-BRIDGING CHARACTERISTICS
- NO REINFORCING FABRIC REQUIRED
- COLD-TEMPERATURE APPLICATION FLEXIBILITY (20°F (-6 °C) AND RISING)



Dual Waterproofing System

TREMPROOF TRA SHEETING EMBEDDED IN TREMPROOF 250GC

- 120 MIL DUAL WATERPROOFING SYSTEM
- LONG-TERM DURABILITY
- DAMP AND GREEN CONCRETE APPLICATION

TREMCO[®]

www.tremcosealants.com
www.tremcoroofing.com

© 2017 Tremco Incorporated

Tremco Commercial Sealants & Waterproofing

UNITED STATES
3735 Green Road
Beachwood, Ohio,
44122
T: 1.800.321.7906

CANADA
220 Wicksteed Avenue
Toronto, Ontario
M4H 1G7
T: 1.800.363.3213

Tremco Roofing & Building Maintenance

UNITED STATES
3735 Green Road,
Beachwood, Ohio
44122
T: 1.800.526.2728

CANADA
50 Beth Nealson Drive
Toronto, Ontario
M4H 1M6
T: 1.800.668.9879

