



SYSTEM PROFILE

VR LITE

EXTENSIVE THIN LIGHTWEIGHT BUILT-UP SYSTEM

SYSTEM OVERVIEW

Tremco's VR LITE vegetated roof assemblies give designers all the functional elements of a high performance green roof adapted to budgetary and structural limitations. VR LITE systems offer succulent planting options in three growing media depths to suit your project's design parameters.

Whether you are concerned about cost, maintenance, or structural load capacities, there is a VR LITE system that is right for your project, while still

providing storm water retention and ecologically sustained plant communities that consistently out-perform comparable green roof systems.

Don't settle for second rate green roof systems anymore. With Tremco's VR LITE, you can deliver the green roof landscape you want, without breaking the bank or the roof.

MINIMUM MATERIALS. MINIMUM COST.

STILL OUT-PERFORMS THE COMPETITION.

STANDARD FEATURES & OPTIONS

- A heavy-duty percolation layer provides drainage below the growing media and prevents root rot
- Upgrade to a combined water retention and drainage panel for additional storm water retention
- Standard growing media depths of 2", 3" and 4"
- Desert Succulent plantings can be installed via cuttings, plugs, or pre-vegetated mats. Standard and custom blends available.

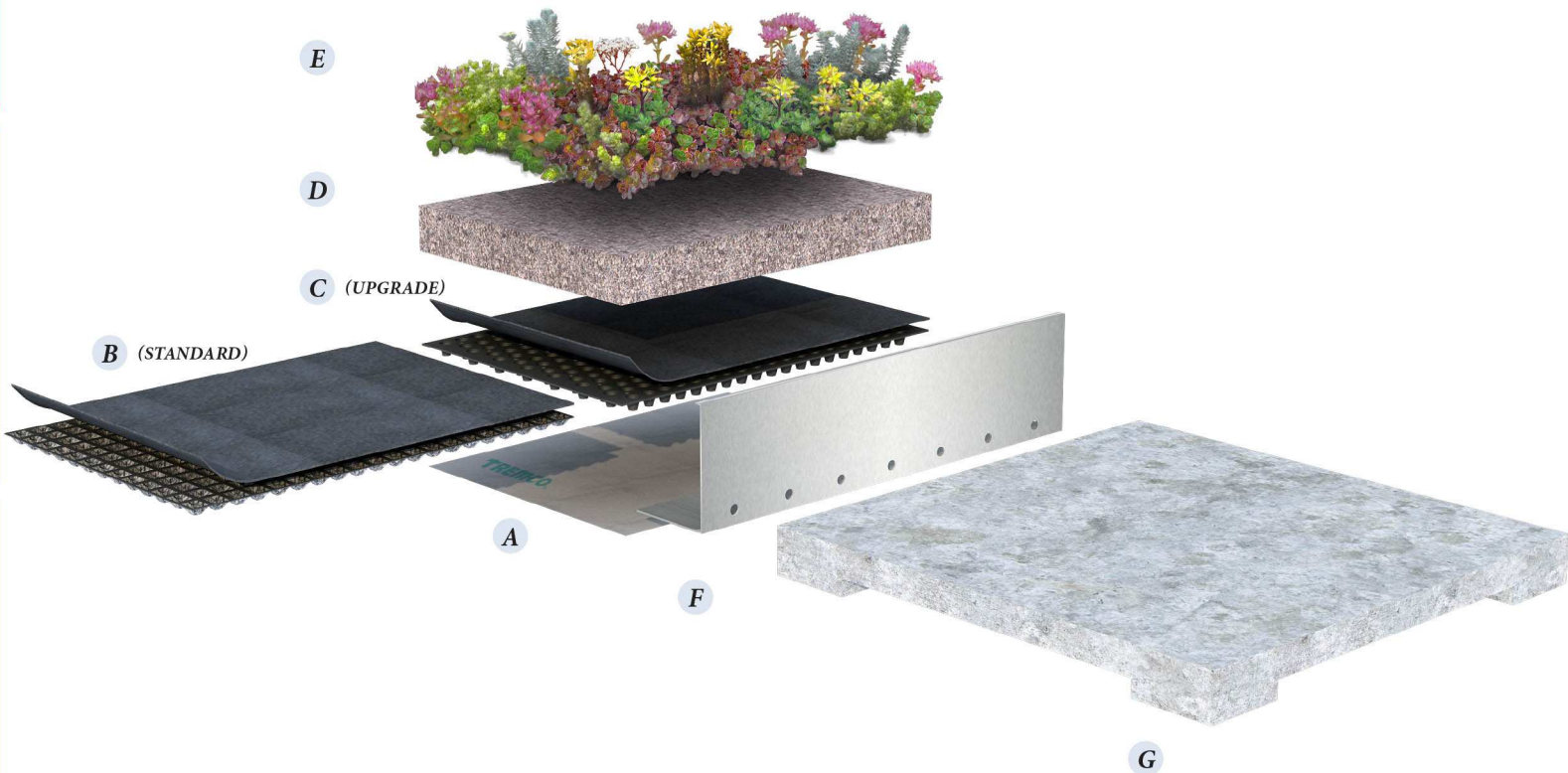
SYSTEM DETAILS

VR LITE

EXTENSIVE
THIN LIGHTWEIGHT BUILT-UP SYSTEM

SYSTEM COMPONENTS

- A** ROOT BARRIER
- (STANDARD) **B** PERCOLATION LAYER WITH FILTER FABRIC OVERLAY
- (UPGRADE) **C** WATER RETENTION & DRAINAGE PANEL WITH FILTER FABRIC OVERLAY
- D** ENGINEERED GROWING MEDIA
- E** VEGETATION OPTIONS:
SEDUM BLENDS
- F** EDGING RESTRAINT
- G** VEGETATION-FREE ZONE



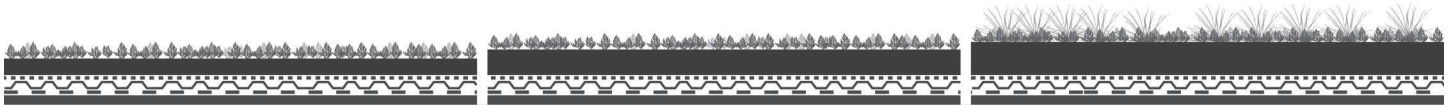


SYSTEM CRITICAL DATA SHEET

VR LITE

EXTENSIVE THIN LIGHTWEIGHT BUILT-UP SYSTEM

ACCESSORIES ROOT BARRIER
DRAIN INSPECTION BOX
EDGING RESTRAINT
IRRIGATION



VR LITE

SYSTEM

VR LITE 2

VR LITE 3

VR LITE 4

GROWING MEDIA DEPTH

2"
50 MM

3"
75 MM

4"
100 MM

VEGETATION OPTIONS

SEDUM BLENDS:
STANDARD
CUSTOM

SEDUM BLENDS:
STANDARD
CUSTOM

SEDUM BLENDS:
STANDARD
CUSTOM

SATURATED WEIGHT

13.5 - 16.0 LB/SQ. FT.
65 - 80 KG/SQ. M.

20.0 - 23.0 LB/SQ. FT.
95 - 115 KG/SQ. M.

26.5 - 30.0 LB/SQ. FT.
130 - 150 KG/SQ. M.

STORM WATER RETENTION CAPACITY

0.50 - 0.80 GAL/SQ. FT.
20 - 30 L/SQ. M.

0.80 - 1.10 GAL/SQ. FT.
32 - 45 L/SQ. M.

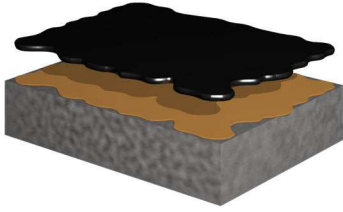
1.10 - 1.40 GAL/SQ. FT.
45 - 58 L/SQ. M.



COMPLEMENTARY WATERPROOFING ASSEMBLIES

TREMproof 6100

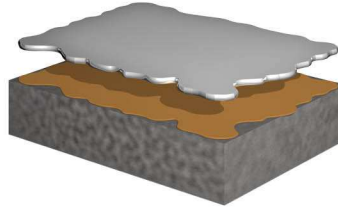
HOT RUBBERIZED ASPHALT



- 215 MIL SELF-HEALING MODIFIED ASPHALT
- COLD-TEMPERATURE APPLICATION FLEXIBILITY
- 40-YEAR TRACK RECORD
- COMPLIES WITH CGSB 37GP 50M SPECIFICATION

TREMproof PUMA

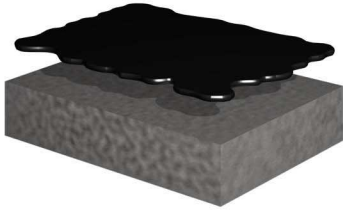
POLYURETHANE-METHACRYLATE (PUMA) TECHNOLOGY



- 30-TO-45 MINUTE CURE TIME BETWEEN COATS; ABILITY TO PROCEED TO OVERBURDEN 1 HOUR AFTER APPLICATION
- EXTREME DURABILITY WITH EXCEPTIONAL CRACK-BRIDGING CHARACTERISTICS
- NO REINFORCING FABRIC REQUIRED
- COLD-TEMPERATURE APPLICATION FLEXIBILITY (20°F (-6 °C) AND RISING)

TREMproof 250GC

COLD-APPLIED ELASTOMERIC WATERPROOFING MEMBRANE



- 120 MIL SINGLE-LIFT APPLICATION
- 215 MIL HIGH-BUILD OPTION
- DAMP AND GREEN CONCRETE APPLICATION
- NO REINFORCING FABRIC REQUIRED
- SIGNIFICANT LABOR SAVINGS

Dual Waterproofing System

TREMproof TRA SHEETING EMBEDDED IN TREMproof 250GC



- 120 MIL DUAL WATERPROOFING SYSTEM
- LONG-TERM DURABILITY
- DAMP AND GREEN CONCRETE APPLICATION

Project:
MILWAUKEE PUBLIC MUSEUM
Milwaukee, WI, USA



TREMCO

www.tremcosealants.com
www.tremcoroofing.com

© 2017 Tremco Incorporated

Tremco Commercial Sealants & Waterproofing

UNITED STATES
3735 Green Road
Beachwood, Ohio,
44122
T: 1.800.321.7906

CANADA
220 Wicksteed Avenue
Toronto, Ontario
M4H 1G7
T: 1.800.363.3213

Tremco Roofing & Building Maintenance

UNITED STATES
3735 Green Road,
Beachwood, Ohio
44122
T: 1.800.526.2728

CANADA
50 Beth Nealson Drive
Toronto, Ontario
M4H 1M6
T: 1.800.668.9879

