



SYSTEM PROFILE

VR ULTRALITE

**EXTENSIVE
EXTRA LIGHTWEIGHT BUILT-UP SYSTEM**

SYSTEM OVERVIEW

Tremco's VR ULTRALITE system is our lightest pre-vegetated green roof system available.

When structural limitations, cost, and maintenance are your primary design challenges, Tremco's VR ULTRALITE system will provide the lightest, easiest-to-install, and fastest green roof available on the market.

The VR ULTRALITE system boasts the same low maintenance requirements as Tremco's VR LITE extensive green roof systems, however with no loose growing media, good water retention and stormwater management capabilities, and instant greening effects, this system is a strong contender for retrofit projects with weight and cost limitations.

**LIGHTWEIGHT.
PRE-VEGETATED.**

**THE LIGHTEST
GREEN ROOF SYSTEM
AVAILABLE.**

STANDARD FEATURES & OPTIONS

- A drainage layer ensures free drainage throughout the system
- Two layers of retention fleece provides excellent water retention to weight ratio
- No "loose" growing media in the green roof system makes for an easy, clean, and fast installation process
- Standard and custom sedum succulent blends available in fully mature pre-vegetated mats
- Optional accessories include: edging restraint, drainage inspection chamber, green roof paver

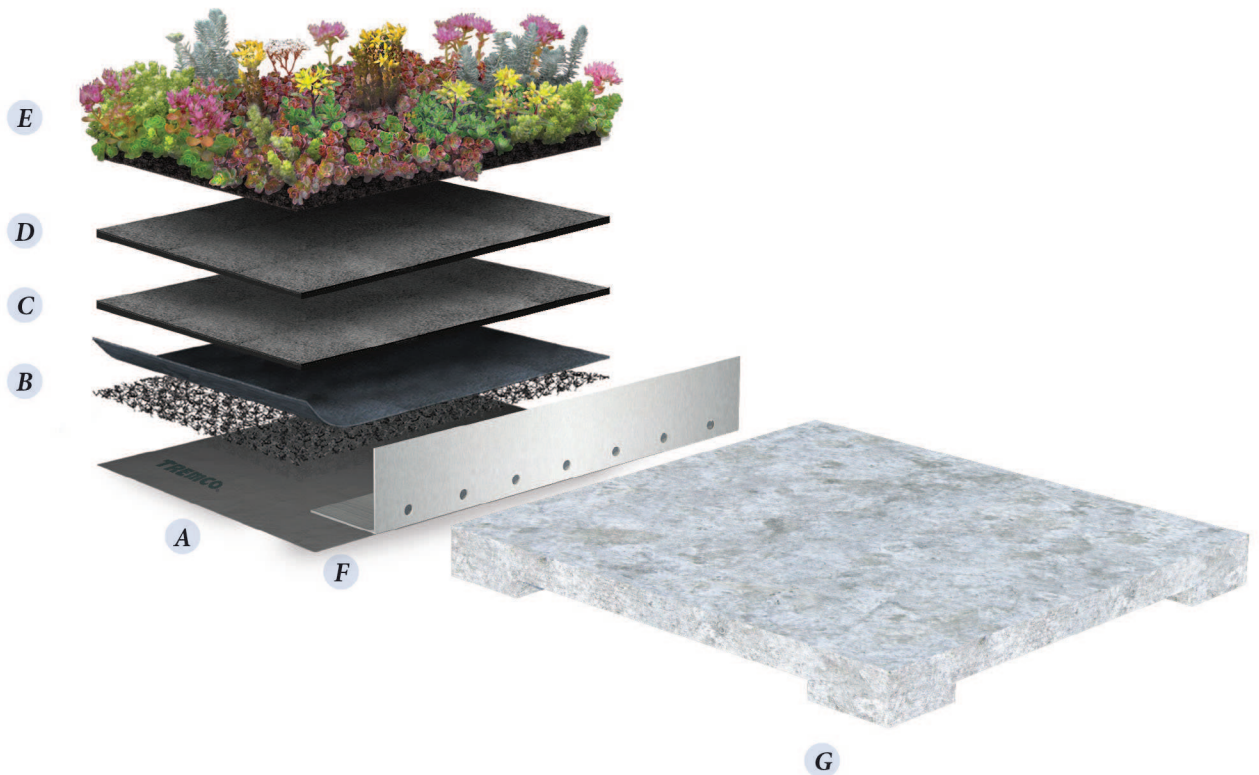
SYSTEM DETAILS

VR ULTRALITE

EXTENSIVE
EXTRA LIGHTWEIGHT BUILT-UP SYSTEM

SYSTEM COMPONENTS

- A ROOT BARRIER
- B DRAINAGE LAYER
- C WATER RETENTION LAYER
- D WATER RETENTION LAYER
- E PRE-VEGETATED OPTIONS:
STANDARD SEDUM BLENDS
CUSTOM SEDUM BLENDS
- F EDGING RESTRAINT
- G VEGETATION-FREE ZONE





SYSTEM CRITICAL DATA SHEET

VR ULTRALITE

EXTENSIVE
EXTRA LIGHTWEIGHT BUILT-UP SYSTEM

ACCESSORIES ROOT BARRIER
DRAIN INSPECTION BOX
EDGING RESTRAINT
IRRIGATION



SYSTEM

VR ULTRALITE

DEPTH

MEDIA DEPTH

0.75"
20 MM

TOTAL SYSTEM DEPTH

2.58"
65.5 MM

VEGETATION OPTIONS

PRE-VEGETATED SEDUM MATS:

STANDARD BLENDS
CUSTOM BLENDS

SYSTEM WEIGHT

DRY WEIGHT

4.70 LB/SQ. FT.
22.97 KG/SQ. M.

SATURATED WEIGHT

12.06 LB/SQ. FT.
58.87 KG/SQ. M.

STORM WATER RETENTION CAPACITY

0.88
35.90

GAL/SQ. FT.
L/SQ. M.

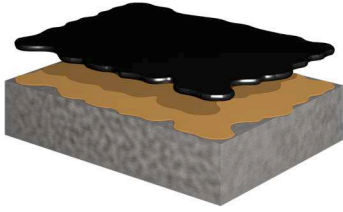
VR ULTRALITE



COMPLEMENTARY WATERPROOFING ASSEMBLIES

TREMproof 6100

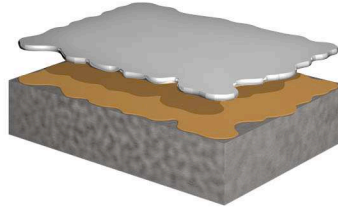
HOT RUBBERIZED ASPHALT



- 215 MIL SELF-HEALING MODIFIED ASPHALT
- COLD-TEMPERATURE APPLICATION FLEXIBILITY
- 40-YEAR TRACK RECORD
- COMPLIES WITH CGSB 37GP 50M SPECIFICATION

TREMproof PUMA

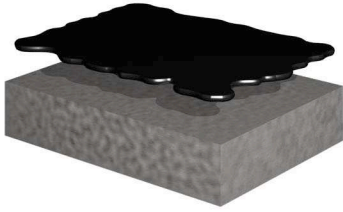
POLYURETHANE-METHACRYLATE (PUMA) TECHNOLOGY



- 30-TO-45 MINUTE CURE TIME BETWEEN COATS; ABILITY TO PROCEED TO OVERBURDEN 1 HOUR AFTER APPLICATION
- EXTREME DURABILITY WITH EXCEPTIONAL CRACK-BRIDGING CHARACTERISTICS
- NO REINFORCING FABRIC REQUIRED
- COLD-TEMPERATURE APPLICATION FLEXIBILITY (20°F (-6 °C) AND RISING)

TREMproof 250GC

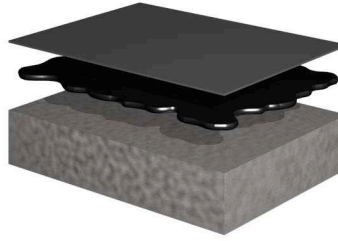
COLD-APPLIED ELASTOMERIC WATERPROOFING MEMBRANE



- 120 MIL SINGLE-LIFT APPLICATION
- 215 MIL HIGH-BUILD OPTION
- DAMP AND GREEN CONCRETE APPLICATION
- NO REINFORCING FABRIC REQUIRED
- SIGNIFICANT LABOR SAVINGS

Dual Waterproofing System

TREMproof TRA SHEETING EMBEDDED IN TREMproof 250GC



- 120 MIL DUAL WATERPROOFING SYSTEM
- LONG-TERM DURABILITY
- DAMP AND GREEN CONCRETE APPLICATION



TREMCO

www.tremcosealants.com
www.tremcoroofing.com

© 2017 Tremco Incorporated

Tremco Commercial Sealants & Waterproofing

UNITED STATES
3735 Green Road
Beachwood, Ohio,
44122
T: 1.800.321.7906

CANADA
220 Wicksteed Avenue
Toronto, Ontario
M4H 1G7
T: 1.800.363.3213

Tremco Roofing & Building Maintenance

UNITED STATES
3735 Green Road,
Beachwood, Ohio
44122
T: 1.800.526.2728

CANADA
50 Beth Nealson Drive
Toronto, Ontario
M4H 1M6
T: 1.800.668.9879

