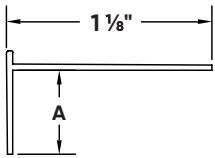


## Architectural L Bead

Finish the rough edge of drywall with the sharpest and cleanest L Bead on the market. The possibilities with Architectural L Bead are practically endless, from flawless window returns to intricate ceiling designs to flush baseboards.

### Installation Guide

Technical Specs



Scan Below for  
Installation Video



#### Before Installation:

Measure, cut and dry fit the bead.

#### Step 1:

Spray the bead with 2 coats of Trim-Tex 847 Spray Adhesive.

#### Step 2:

Press the bead in place, applying pressure to the mud legs.

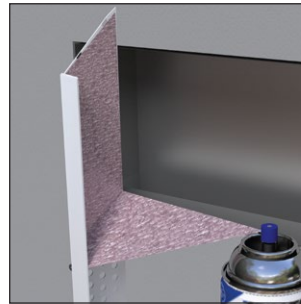
#### Step 3:

Staple every 6"-8" using 1/2" staples.

#### Step 4:

Finish with drywall compound.

#### Step 1:



#### Step 2:



#### Step 3:



#### Step 4:

