

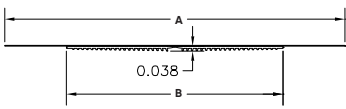


## Fast Edge Rolls

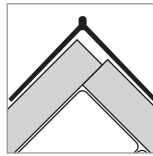
Fast Edge – the next generation of corner bead, known far and wide for having the quickest installation on the market while using the least amount of mud – is now available in a convenient, highly flexible rolled form in four widths: 2.75", 3.25", 3.75" and 4.50". Tackle off-angle inside and outside corners faster than ever, while our patented mud locks featured on the bead's paper-covered vinyl core provide unmatched bond strength and durability.

## Installation Guide

Technical Specs



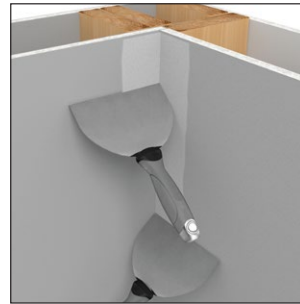
Setback: Standard



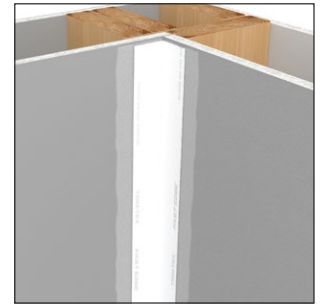
Scan Below for Installation Video



### Step 1:



### Step 2:



### Before Installation:

Measure, cut and dry fit the bead.

### Step 1:

Use all-purpose mud set in place.

### Step 2:

Place Fast Edge Roll in corner and adjust it, if necessary. Wipe off excess mud.

### Step 3:

Apply skim coat to the edges of the corner. Final coat where necessary.

### Step 3:

