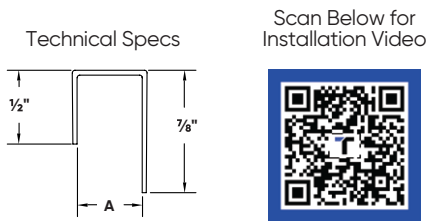




## J Bead

The bead that started it all! The world's first vinyl drywall finishing bead, this venerable profile still caps unfinished drywall with unparalleled ease – no mud required! Use this bead anywhere a finished drywall edge is called for.

## Installation Guide



### Before Installation:

Measure, cut and dry fit the bead.

### Step 1:

Apply caulk to the inside of J Bead, if necessary.

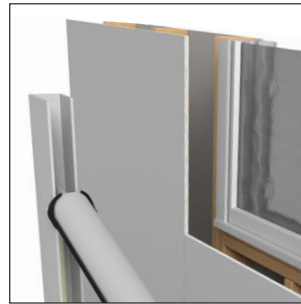
### Step 2:

Insert J bead onto the edge of the drywall (note that the longer leg goes behind the drywall, and smaller leg goes in front of the drywall).

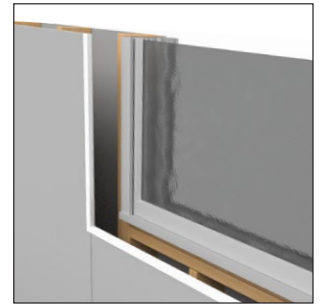
### Step 3:

Install drywall.

### Step 1:



### Step 2:



### Step 3:

