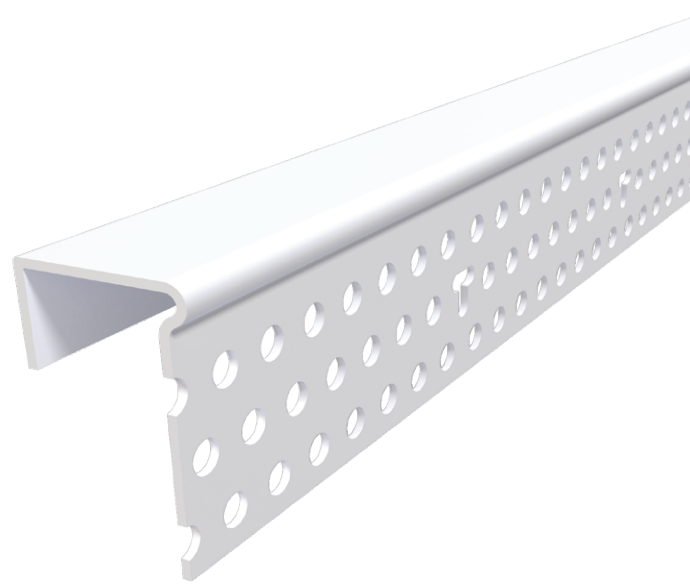


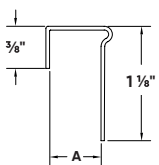
Mud On J Bead

An ideal profile to transition between drywall and another surface material such as tile, glass or wood. The bead installs with adhesive spray and staples for extra strength and finishes with mud for a seamless transition.



Installation Guide

Technical Specs



Scan Below for
Installation Video



Before Installation:

Measure, cut and dry fit the bead.

Step 1:

Coat both the bead and edge of drywall with Trim-Tex 847 Spray Adhesive.

Step 2:

Press the bead in place, applying pressure to the mud legs (note that the smaller leg goes behind the drywall, and longer leg goes in front of the drywall).

Step 3:

Install drywall and staple every 6"-8" using 1/2" staples.

Step 4:

Finish with drywall compound.

Step 1:



Step 2:



Step 3:



Step 4:

