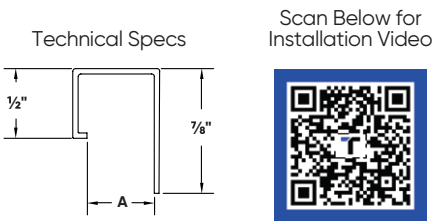


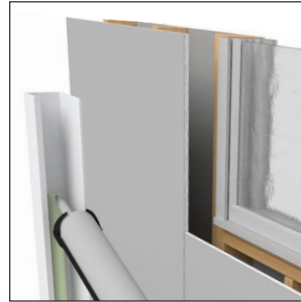
Shadow Line J Bead

Perfect solution for capping unfinished drywall quickly and easily – no mud required! This bead has a slightly raised profile on one side that imparts a contemporary finish option.

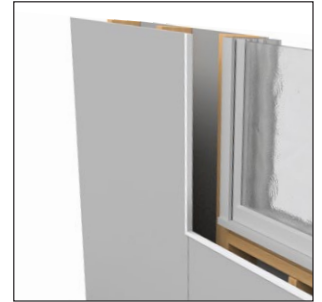
Installation Guide



Step 1:



Step 2:



Before Installation:

Measure, cut and dry fit the bead.

Step 1:

Apply caulk to the inside of the Shadow Line J Bead, if necessary.

Step 2:

Insert the Shadow Line J bead onto the edge of the drywall (note that the longer leg goes behind the drywall, and smaller leg goes in front of the drywall).

Step 3:

Install drywall.

Step 3:

