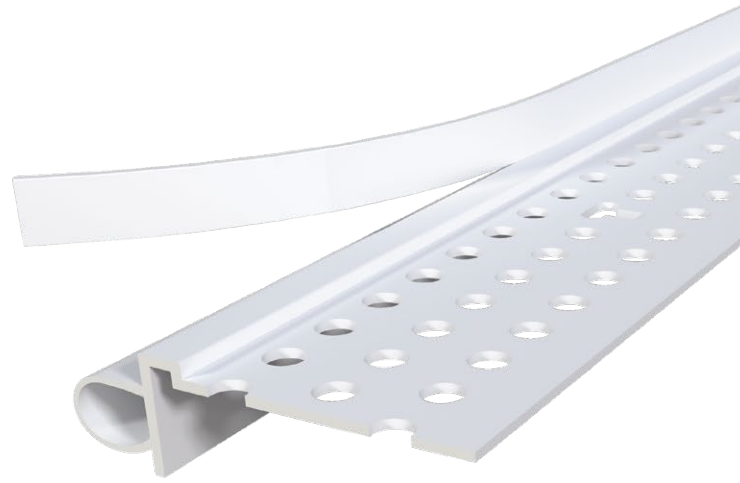


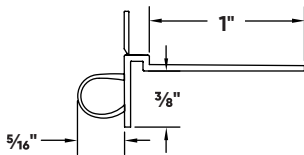
Super Seal Tear Away® L Bead

Super Seal Tear Away possesses a flexible bubble gasket, which forms a perfect, permanent seal around windows, doors and areas where drywall butts up to concrete walls. This reduces sound transmission, replacing acoustical caulk, and provides relief from the stresses of structural movement. The attached tear-off strip acts as a protective mask for mudding.



Installation Guide

Technical Specs



Scan Below for
Installation Video



Before Installation:

Ensure there is a 1/4" gap between the drywall edge and adjacent surface. Measure, cut and dry fit the bead.

Step 1:

Coat the bead with Trim-Tex 847 Spray Adhesive.

Step 2:

Press the bead in place, applying pressure to the mud legs.

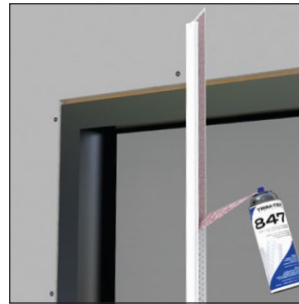
Step 3:

Staple every 6"-8" using 1/2" staples.

Step 4:

Finish with drywall compound. Remove tear-off strips prior to sanding.

Step 1:



Step 2:



Step 3:



Step 4:

