

## Countertop Installation

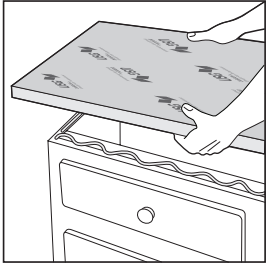
1-1/2 in. (38.1 mm) and  
2 in. (50.8 mm)

### Positioning

Fit ends and edges of panels together.

### Fastening

USG Durock™ UltraLight Foam Tile Backerboard is adhered directly to base cabinets using USG Durock™ Brand Sealant.



### Joining

All panel sections must be adjoined and sealed using USG Durock™ Brand Sealant or USG Durock™ Brand Waterproofing Membrane Band, 5 in. (127 mm) wide, adhered with tile-setting mortar\*. Treat fastener penetrations with USG Durock™ Brand Sealant.

### Finishing

Use tile-setting mortar\* to set tiles.

## Wall Installation

1/2 in. (12.7 mm) and  
5/8 in. (15.9 mm)

**Wood framing:** USG Durock™ Tile Backer Screws for wood framing (or equivalent), 1-1/4 in. (31.8 mm) and 1-5/8 in. (41.3 mm) for wood framing;

nails 1-1/2 in. (38.1 mm) hot-dipped galvanized roofing nails.

**Steel framing:** USG Durock™ Tile Backer Screws for steel framing (or equivalent), 1-1/4 in. (31.8 mm) and 1-5/8 in. (41.3 mm) for 14- to 20-gauge steel framing.

2 in. (50.8 mm) thick board, fasten with 2-1/2 in. (63.5 mm), 3 in. (76.2 mm) and 3-1/2 in. (88.9 mm) (respectively) corrosion resistant wafer-head screws with a minimum head diameter of 3/8 in. (9.5 mm).

### Fastening

Minimum panel thickness for studs spaced at 16 in. (406 mm) o.c. is 1/2 in. (12.7 mm). Fasten USG Durock™ UltraLight Foam Tile Backerboard panels to framing with USG Durock™ Brand Tile Backer Screws. Drive fasteners into field of panels first, working toward ends and edges. Hold panels in firm contact with framing while driving fasteners. Space fasteners maximum 8 in. (203 mm) o.c. for walls, with perimeter fasteners at least 3/8 in. (9.5 mm) and less than 5/8 in. (15.9 mm) from ends and edges. Drive nails and screws so tops of heads are flush with panel surface to ensure firm panel contact with framing. Do not overdrive fasteners.

### Joining/Waterproofing

Finish joints with USG Durock™ Brand Waterproofing Membrane Band, 5 in. (127 mm) wide,

adhered with tile-setting mortar\* and treat fastener penetrations with USG Durock™ Brand Sealant. Apply only enough sealant to sufficiently cover the fastener head and then strike flush using a margin trowel or similar.

### Finishing

Ceramic or natural stone tile. Use tile-setting mortar\* to set tiles.

### TRADEMARKS

The trademarks USG, DUROCK, IT'S YOUR WORLD. BUILD IT., the USG logo, the design elements and colors, and related marks are trademarks of USG Corporation or its affiliates.

### NOTE

Products described here may not be available in all geographic markets. The information in this document is subject to change without notice. USG Corp. assumes no responsibility for any errors that may inadvertently appear in this document. Consult your USG Company sales office or representative for information.

### NOTICE

We shall not be liable for incidental and consequential damages, directly or indirectly sustained, nor for any loss caused by application of these goods not in accordance with current printed instructions or for other than the intended use. Our liability is expressly limited to replacement of defective goods. Any claim shall be deemed waived unless made in writing to us within thirty (30) days from date it was or reasonably should have been discovered.

### Shower Installation

See *Shower System Installation Guide* CB598.

\* Tile-setting mortar should meet ANSI A118.1, A118.4, A118.11 or A118.15.

### PRODUCT INFORMATION

See [usg.com](http://usg.com) for the most up-to-date product information.

### SAFETY FIRST!

Follow good safety/industrial hygiene practices during installation. Wear appropriate personal protective equipment. Read SDS and literature before specification and installation.

Manufactured for  
**United States Gypsum Company**  
550 West Adams Street  
Chicago, IL 60661

### For warranty or product information and literature

1-800-874-4968  
[usg.com](http://usg.com)

CB766-USA-ENG/rev. 3-19  
© 2019 USG Corporation and/or its affiliates. All rights reserved.  
Printed in U.S.A.

# USG DUROCK™ BRAND ULTRALIGHT FOAM TILE BACKERBOARD Installation Guide



## USG Durock™ Brand UltraLight Foam Tile Backerboard

For more than 30 years, USG Durock® Brand has set the standard for proven performance in the backerboard category. Now this great product family has its newest member, USG Durock™ UltraLight Foam Tile Backerboard, the lightest, highest performing foam tile backerboard in the industry.

USG Durock™ UltraLight Foam Tile Backerboard continues the brand's tradition of quality, reliability and performance.

### Benefits include:

- Lightweight, waterproof and vapor retardant
- Rugged facer on extruded foam core
- Fastens without washers
- Cuts easily with utility knife and dust free
- Suitable for continuous-use steam shower
- Ideal for use with USG Durock™ Brand Shower System components
- 10-year, Limited Warranty

## Requirements

### Floors

#### 1/4 in. (6.3 mm) thickness

Subfloor should be minimum 23/32 in. (18.3 mm) APA Span-Rate Plywood or OSB with an Exposure 1 classification or better. Maximum joist spacing: 19.2 in. (488 mm) o.c. Maximum allowable deflection, based on joist properties only, L/360. Maximum fastener spacing: 8 in. (203 mm) o.c. for wood and steel framing.

### Countertops

#### 1-1/2 in. (38.1 mm) and 2 in. (50.8 mm) thickness

Adhere directly to base cabinets with USG Durock™ Brand Sealant.

### Walls

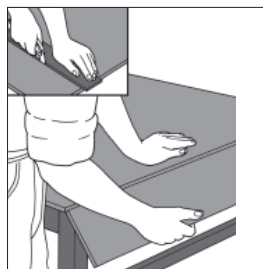
#### 1/2 in. (12.7 mm) and 5/8 in. (15.9 mm) thickness

Maximum stud spacing: 16 in. (406 mm) o.c. Maximum allowable deflection, based on stud properties only, L/360. Maximum fastener spacing: 8 in. (203 mm) o.c. for wood and steel framing.

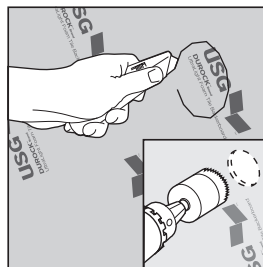
## What you'll need

### Cutting

USG Durock™ UltraLight Foam Tile Backerboard panels should be cut to size by scoring both sides and snapping using a utility knife and straight edge.



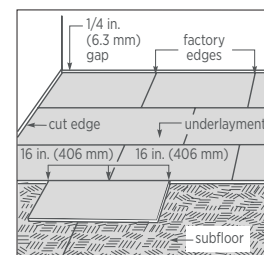
To make cutouts for pipes and fixtures, use a utility knife to cut through facers on both sides and remove foam core. Or, use an electric drill with a hole-saw bit.



## Floor Installation 1/4 in. (6.3 mm)

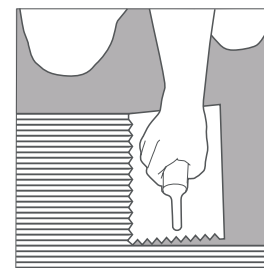
### Positioning

Fit ends and edges of panels closely but not forced together, maintaining 1/4 in. (6.3 mm) space between panels and perimeter walls. Stagger joints a minimum 16 in. (406 mm) so that four corners never meet. Offset panel joints a minimum 8 in. (203 mm) from subfloor joints.



### Leveling Bed

Laminate USG Durock™ UltraLight Foam Tile Backerboard to subfloor using tile-setting mortar\*. Apply mortar with 1/4 X 3/8 in. (6.3 x 9.5 mm) square or U-notched trowel. Comb out mortar in straight, parallel rows (as shown below) and immediately cover with panel. Adhere panels to subfloor, one panel at a time.



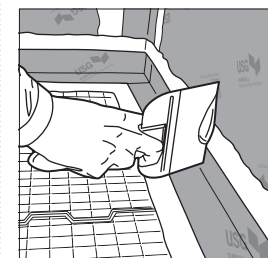
### Fastening

Secure panels before mortar skins over. Fasten to subfloor with 1-1/4 in. (31.8 mm) USG Durock™ Brand Tile Backer Screws for wood framing (or equivalent) or 1-1/2 in. (38.1 mm)

hot-dipped galvanized roofing nails spaced 8 in. (203 mm) o.c. in both directions with perimeter fasteners at least 3/8 in. (9.5 mm) and less than 5/8 in. (15.9 mm) from ends and edges. Drive nails and screws so tops of heads are flush with panel surface to ensure firm panel contact with subfloor. Do not overdrive fasteners.

### Joining/Waterproofing

Finish joints with USG Durock™ Brand Waterproofing Membrane Band, 5 in. (127 mm) wide, adhered with tile-setting mortar\* and treat fastener penetrations with USG Durock™ Brand Sealant. Apply only enough sealant to sufficiently cover the fastener head and then strike flush using a margin trowel or similar.



### Finishing

Ceramic or natural stone tile. Use tile-setting mortar\* to set tiles.