

**USG ENSEMBLE® ACOUSTICAL
DRYWALL CEILING
REPAIR AND MAINTENANCE
GUIDE**

REPAIR AND MAINTENANCE GUIDE

The USG Ensemble™ Spray-Applied Finish can be damaged during or after the installation. Following this guide will result in repairs that blend well with adjacent areas of the ceiling.

PART 1: FINGERPRINT REMOVAL

This image represents USG Ensemble™ Spray-Applied Finish before the ceiling gets damaged and requires repairs.

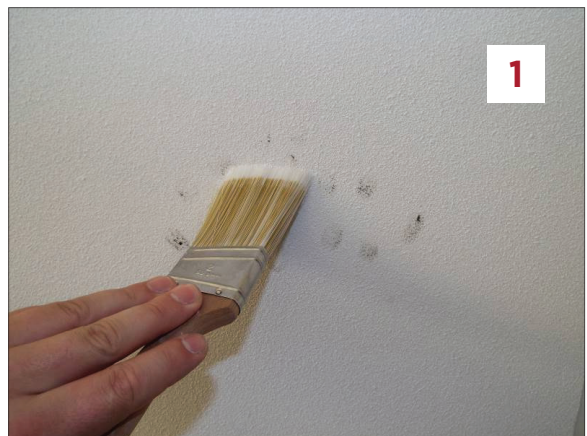


Dirty fingerprints on the finished ceiling are one common issue requiring maintenance.



Step 1:

Try to brush the soiled area with a soft brush.



Step 2:

Try lightly sanding the soiled area with a sanding sponge.



Step 3:

For deep soiling, use an X-ACTO® knife or utility knife to lightly scrape away the soiled areas.



If there are still signs of soiling, the next step is to use a touch-up spray application to mask the discoloration.



**X-ACTO is a trademark of Sandord, L.P.*

PART 2: SCUFFING, SCRATCHING AND SMALL SURFACE IRREGULARITY REPAIR

The following repair recommendation covers scuffing, scratching, small surface irregularities and is limited to coating damage (not substrate damage). It describes a method to repair a very small area of a damaged finished ceiling without the need to reapply coating over the entire ceiling area.

MINOR SCUFF REPAIR

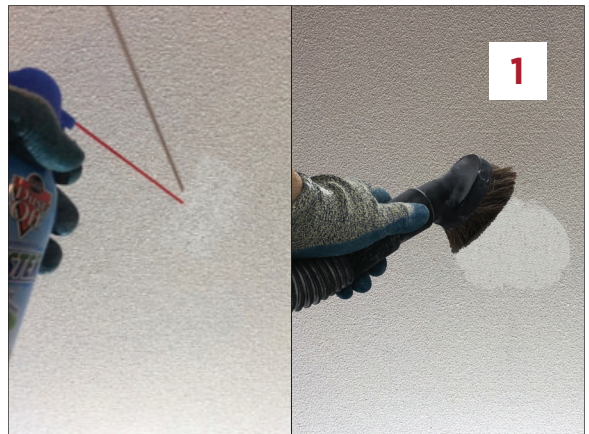
This image represents USG Ensemble™ Spray-Applied Finish that got scuffed and requires repairs.



Step 1:

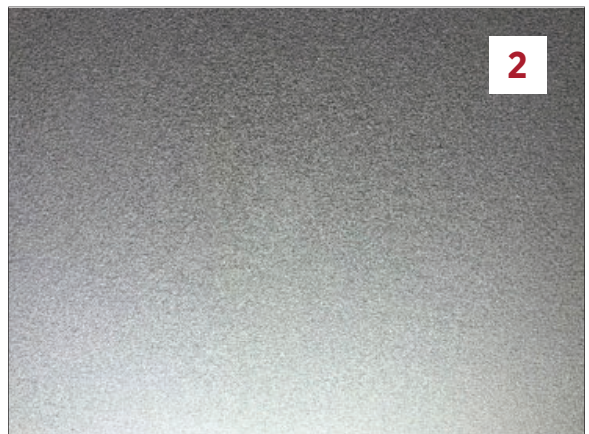
To blend the scuffed area back into the ceiling remove the dust from the scuffed area. This can be done using a can of air duster, a vacuum with HEPA filter and soft brush attachment, or air blow gun¹, in accordance with local occupational safety regulations.

¹Air blow gun nozzle pressure must remain below 10 psi (69 or 70 kPa). Use effective guarding methods that prevent a chip or particle (of any size) from being blown into the eyes or unbroken skin of the operator or other workers nearby.



Step 2:

This process will not remove the damaged area from the ceiling, but it may blend the color close enough where it will not need to be resprayed.



PART 3: SPOT PATCH REPAIR

This image represents USG Ensemble™ Spray-Applied Finish that got damaged and requires repairs.

Step 1:

Remove the finish from the ceiling by sanding around the damaged area at least 6" wider than the area to be repaired. Continue this process until the perforations become visible.



Step 2:

Use a vacuum with HEPA filter and soft brush attachment, or air blow gun¹, in accordance with local occupational safety regulations, to remove any dust created from the sanding step.

¹Air blow gun nozzle pressure must remain below 10 psi (69 or 70 kPa). Use effective guarding methods that prevent a chip or particle (of any size) from being blown into the eyes or unbroken skin of the operator or other workers nearby.



Step 3:

Cut away any loose drywall.



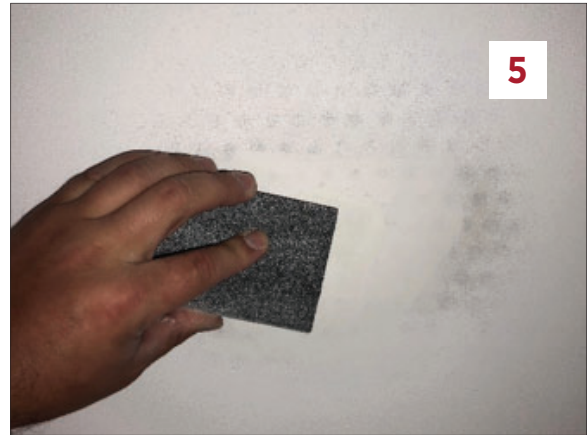
Step 4:

Fill the damaged area with USG Sheetrock® Brand Easy Sand™ Joint Compound.



Step 5:

Once the joint compound is dry, sand the area smooth.



Step 6:

Use a vacuum with HEPA filter and soft brush attachment, or air blow gun¹, in accordance with local occupational safety regulations, to remove any dust created from the sanding step.

¹Air blow gun nozzle pressure must remain below 10 psi (69 or 70 kPa). Use effective guarding methods that prevent a chip or particle (of any size) from being blown into the eyes or unbroken skin of the operator or other workers nearby.



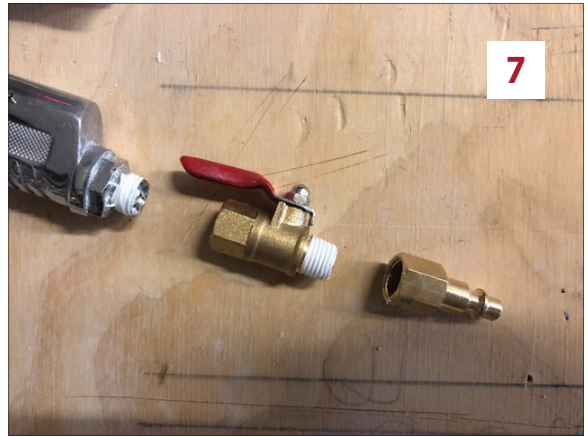
To spray the texture to match the existing ceiling texture you will need to purchase the Homax 4670. Available at local hardware store or online.



*Homax® is a registered trademark of PPG Architectural Finishes, INC

Step 7:

Begin assembling the fittings on the gun.



Step 8:

The Homax 4670 comes with x3 tip sizes, insert the smallest tip into the gun.



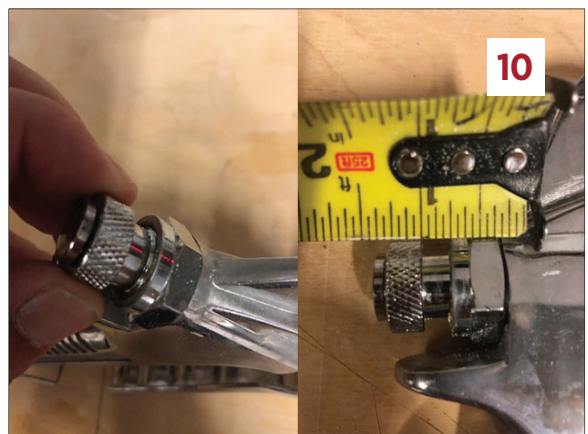
Step 9:

Attach the hopper.



Step 10:

The spray pattern can be adjusted by tightening or loosening the set screw on the back of the gun. Start with a 1/4" gap and test spray pattern on cardboard, if you need a finer texture tighten the screw, if you need a heavier texture loosen the screw.



Step 11:

Set compressor to 110 psi.

**To properly atomize the Finish you will need a compressor that has a minimum of 5 CFM @ 90 psi.*



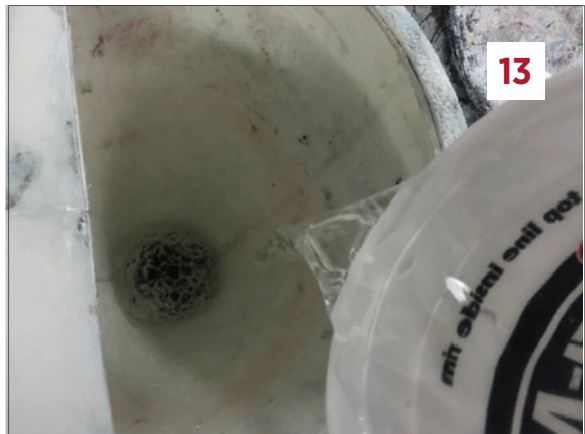
Step 12:

Prepare a bucket of the USG Ensemble™ Spray-Applied Finish according to standard installation procedure.



Step 13:

Pour 20 oz of clean water into the hopper.



Step 14:

Point the gun into a bucket and pull the trigger to drain the water out.



Step 15:

Load USG Ensemble™ Spray-Applied Finish into the hopper.



Step 16:

Test the spray pattern on a piece of cardboard. Try to match the existing ceiling texture. Adjust the texture with the set screw, as necessary.



Step 17:

Once the spray texture is correct, begin to spray light passes over the affected area, no closer than 24" away from the target.



Step 18:

Between coats remove the air hose from the gun and lean the hopper on buckets. Lay a damp rag over the opening on the hopper to keep the Finish from drying out.



Step 19:

Once the previous coat is 100% dry, use a soft rubber squeegee to remove any loose texture from the ceiling. (Repeat this step between each coat.)

**Step 20:**

Focus the first few coats on the newly patched area and widen the spray area beyond the patched area with each coat. Apply successive coats until the perforations and joint compound are no longer visible and the patched area matches the surrounding texture and color.



PART 4: LARGE PATCH REPAIR

The following recommendation covers repair of a large section of ceiling, including replacing a section of the substrate. It describes a method to repair a limited area of damaged ceiling without the need to reapply coating over the entire ceiling area.

LARGE PATCH REPAIR

This image represents USG Ensemble™ Spray-Applied Finish that got water damaged and requires removal/replacement.

Step 1:

Use a pencil and a straight edge to mark the perimeter of the area to be cut out. Then make a second line 1-1/2" (4 cm) around the cut line.

Step 2:

Remove the affected area of the ceiling. Make all cuts as straight as possible so the new boards will fit tight to the existing boards.



Step 3:

Use a utility knife to score the veil and paper on the outside line around the area to be repaired.



Step 4:

Peel off the paper and veil to create room for the tape.



Step 5:

Repeat this on all the sides of the area to be patched.



Step 6:

After the new panel is cut to size score the paper and veil 1-1/2" (4 cm) on the perimeter, to make room for the tape on the joint.



Step 7:

Use a high solids primer to seal the raw paper on the Ensemble® Panel around the area to be patched.



Step 8:

Use a high solids primer to seal the raw paper on the replacement Ensemble® Panel.



Step 9:

Add additional framing where needed to support the new boards.



Step 10:

Cut new USG Ensemble® High-NRC Backer Panels and insert where needed.



Step 11:

Sand the coating off down to the scrim on the board around the entire perimeter of the patched area. This can be done with 180-220 grit sandpaper using a pole sander or power sander with a vacuum attachment and HEPA filter.



Step 12:

Sand at least 16 inches (40 cm) wider than the area to be patched, until the perforations are visible.



Step 13:

Use a vacuum with HEPA filter and soft brush attachment, to remove any dust created from the sanding step.



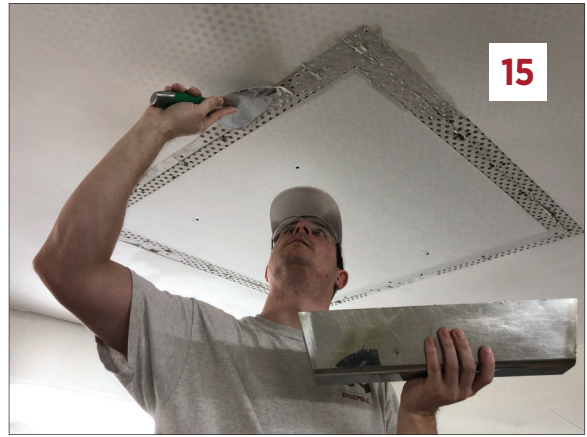
Step 14:

Install replacement panel, be sure to insert additional screws around the perimeter of the existing ceiling.



Step 15:

Pre-fill all the gaps and exposed perforations with USG Sheetrock® Brand Easy Sand™ Joint Compound and wipe tight. Spot all screws in the field of the Panel with USG Sheetrock® Brand Ensemble™ Ceiling Compound.

**Step 16:**

Use USG Sheetrock® Brand Easy Sand™ Joint Compound to bed USG Sheetrock® Brand Paper Joint Tape.

**Step 17:**

Once the tape coat is dry, apply the fill coat to the joints using USG Sheetrock® Brand Ensemble™ Ceiling Compound. Spot all screws for the second time.

**Step 18:**

Once the fill coat is dry, apply the finish coat to the joints using USG Sheetrock® Brand Ensemble™ Ceiling Compound. Spot all screws for the third time.



Step 19:

Sand all the joints and fasteners as flat as possible. This can be done with 180-220 grit sandpaper using a pole sander or power sander with a vacuum attachment and HEPA filter.

**Step 20:**

Inspect all the joints with a critical light and a straight edge. Sand crowned joints and fill hollow joints until no light can pass under the straight edge.

**Step 21:**

Use a vacuum with HEPA filter and soft brush attachment, to remove any dust created from the sanding step.

**Step 22:**

For smaller patches, the hopper sprayer can be used. Follow the steps in “Part 3” for setup and spray procedure for the hopper.

Focus the first few coats on the newly patched area and widen the spray area beyond the patched area with each coat. Apply successive coats until the perforations and joint compound are no longer visible and the patched area matches the surrounding texture and color.



Step 23:

Once the previous coat is 100% dry, use a soft rubber squeegee to remove any loose texture from the ceiling. (Repeat this step between each coat.)



Step 24:

For larger patches, the larger spray equipment can be used. Follow the steps in “Installation Videos” for setup and spray procedure with the large spray equipment.

Focus the first few coats on the newly patched area and widen the spray area beyond the patched area with each coat. Apply successive coats until the perforations and joint compound are no longer visible and the patched area matches the surrounding texture and color.



Step 25:

On the last coat widen the spray area to blend out the ceiling.





Manufactured by
USG Interiors, LLC
550 West Adams Street
Chicago IL 60661

USG Technical Service
800 USG 4 YOU (834-4968)
usg.com/ensemble

The trademarks USG, CGC, EASY SAND, ENSEMBLE, SHEETROCK, IT'S YOUR WORLD. BUILD IT, the USG/CGC logo, the design elements and colors, and related marks are trademarks of USG Corporation of its affiliates

SC5048/rev. 8-21

© 2021 USG Corporation and/or its affiliates.
All rights reserved

