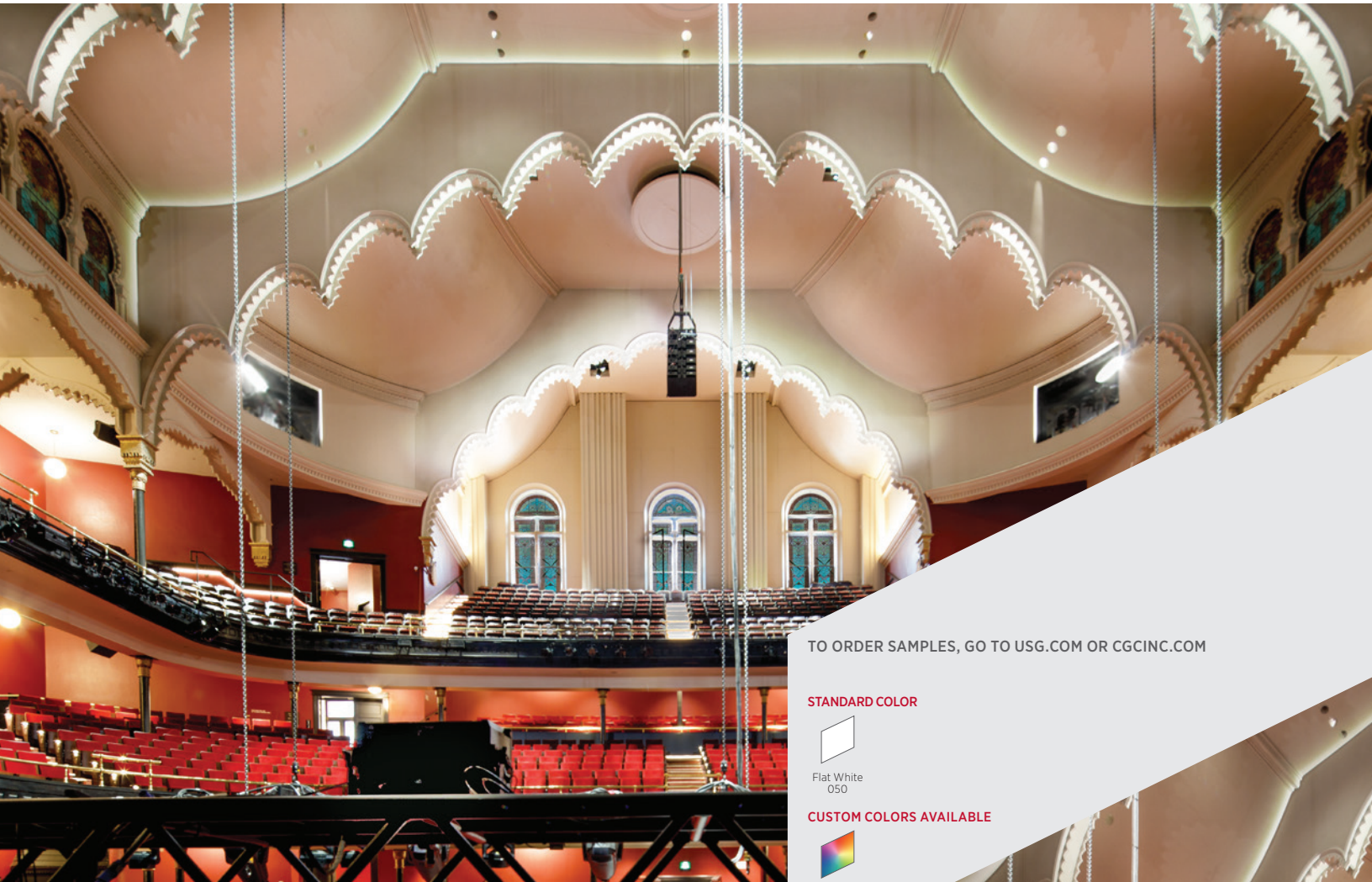


# USG ENSEMBLE® ACOUSTICAL DRYWALL—DIRECT MOUNT WALL SYSTEM

SEAMLESS APPEARANCE WITH EXCELLENT ACOUSTIC PERFORMANCE



TO ORDER SAMPLES, GO TO [USG.COM](http://USG.COM) OR [CGCINC.COM](http://CGCINC.COM)

#### STANDARD COLOR



Flat White  
050

#### CUSTOM COLORS AVAILABLE



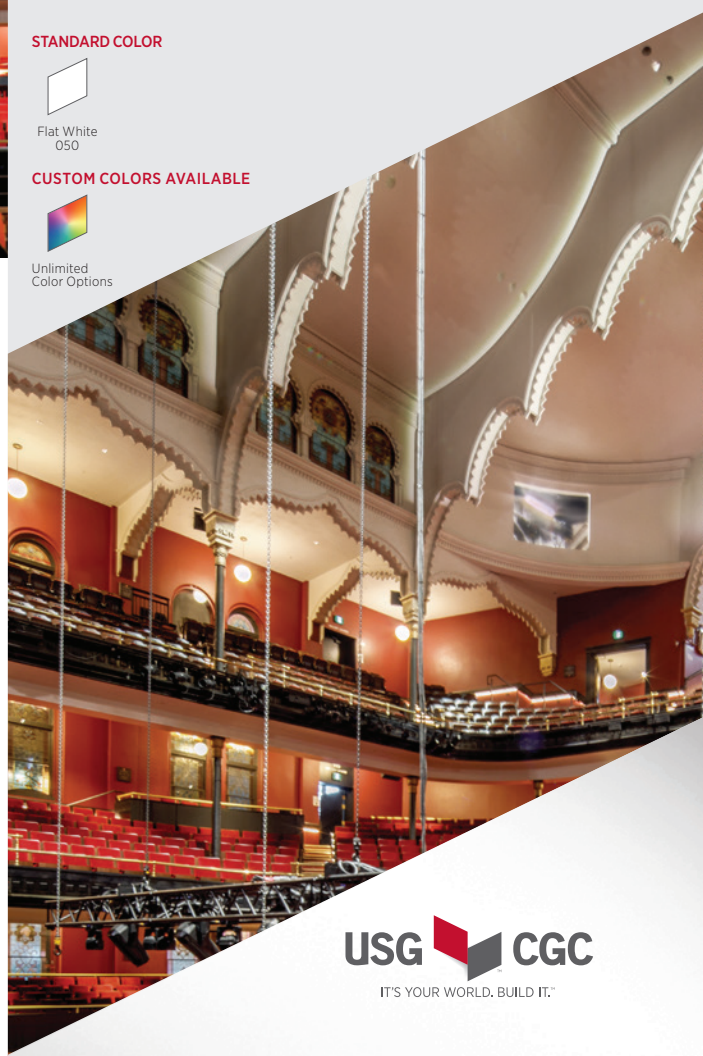
Unlimited  
Color Options

#### FEATURES AND BENEFITS

- Monolithic appearance with fine finish in standard white and custom colors.
- Z-Furring framing system enables the USG Ensemble® wall system to interior stud/drywall or masonry partitions.
- Install above 7 feet to minimize contact or damage to finished acoustical wall.
- Perforated USG Sheetrock® Brand Ensemble™ Four-Sided Taper Panels, USG High-NRC Backer Panels and acoustically transparent USG Ensemble® Spray-Applied Finish optimize sound absorption in the system; NRC 0.80.
- Improves STC of interior stud/drywall partition systems by up to 6 points.
- Installs and finishes using traditional drywall techniques and USG Ensemble Spray-Applied Finish.
- Backed by USG's advanced design and engineering, certified installer and sales support network and full system warranty.

#### APPLICATIONS

- Lobbies
- Atria
- Concourses
- Museums
- Performing arts spaces
- Corporate interiors
- Board rooms/  
executive offices
- Classrooms/  
higher education
- Hospitality
- Restaurants



# USG ENSEMBLE® ACOUSTICAL DRYWALL—DIRECT MOUNT WALL SYSTEM

ORDER SAMPLES/LITERATURE  
USG: usg.com or samplifit@usg.com  
CGC: contact Sales Representative

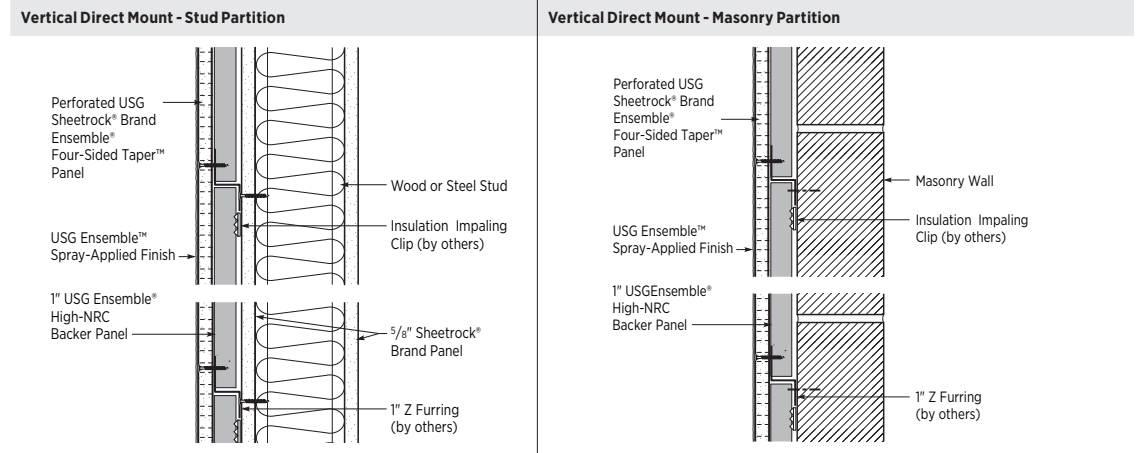
TECHNICAL SERVICES  
800.USG.4YOU (874-4968)

TECHNICAL INFORMATION  
usg.com/ensemble



## SYSTEM DETAILS

USG Ensemble® can be direct mounted to a wall or a vertical surface and used as an acoustical treatment on interior partitions above 7 feet. It can be attached to a new or existing wood or steel stud drywall partition or masonry wall to reduce reverberation. See USG Ensemble® Design Guide for installation details.



## PERFORMANCE DATA

Base Panel	Furring	Backer Panel	NRC	LR	Fire performance
USG Sheetrock® Brand Ensemble® Four-Sided Taper™ Panels	1" Z	1" USG Ensemble® High-NRC	0.80	.85	Class A

Ensemble Direct Mount shall be properly fastened to framing, and considerations shall be given to the load-carrying capacity of the framing system.

## SYSTEM COMPONENTS

\*Refer to Z-Furring and Impaling Clip manufacturer's literature.

Products	Item Number	Sizes	Packaging	Quantity	Notes
1" 20 ga. Z-Furring* (by others)	—	—	—	—	24" o.c. framing
Insulation Impaling Clip* (by others, AST Acoustics or equal)	—	—	—	—	One clip for each backer panel
5/8" USG Sheetrock® Brand Ensemble® Four-Sided Taper™ Panels	<b>ENSPNL96, ENSPNL120</b>	5/8" x 4' x 8', 5/8" x 4' x 10'	26-pc. unit	8'-832 sq. ft./unit 10'-1040 sq. ft./unit	Gypsum panel highly engineered to perform like an acoustical ceiling panel
1" USG Ensemble® High-NRC Backer Panels	<b>ENSHINRC</b>	1" x 23.5" x 47.75"	4-pc. unit	31.3 sq. ft./carton	Acoustical base mat for High-NRC/High-CAC
USG Sheetrock® Brand Paper Joint Tape	—	250' roll	20 rolls per carton	5,000 LF/ctn	Specially formulated paper tape
USG Sheetrock® Brand All Purpose Joint Compound	<b>USAPJC</b>	4.5-gal. pail	Single pail 48-pail pallet	216 gal./pallet	Coverage 100 sq. ft./gal. 450 sq. ft./4.5-gal. pail
USG Sheetrock® Brand Ensemble™ Ceiling Compound	<b>ENSCJC</b>	4.5-gal. pail	Single pail 48-pail pallet	216 gal./pallet	Coverage 106 sq. ft./gal. 480 sq. ft./4.5-gal. pail
USG Ensemble™ Spray-Applied Finish, White, Custom Colors	<b>ENSSPRAF</b>	4.5-gal. pail	Single pail 48-pail pallet	216 gal./pallet	Coverage 100 sq. ft./4.5-gal. pail

## LIMITATIONS

- For interior partitions only. Install above 7 feet to minimize contact or damage.
- Not for use in areas subject to continuous high heat and/or humid conditions.
- Install according to Section 5 Environmental Conditions listed in ASTM C840.
- In order to ensure installed performance, component substitutions are not permitted.

## USG ENSEMBLE® ACOUSTICAL DRYWALL COLOR PROGRAM

### Custom Color Matching - Specifier to provide a color number from one of the following:

- Benjamin Moore®
  - Sherwin-Williams®
  - PANTONE®
- Recommended Instructions
- Minimum order quantity for USG Ensemble™ Spray-Applied Finish is 8 pails.
  - Request customer color samples through your local USG Ensemble® sales representative.
  - Allow three weeks to receive custom color sample.
  - Once the color sample is approved and the order is placed by the purchaser, allow three weeks for the custom-colored USG Ensemble® Spray-Applied Finish to ship with the USG Ensemble® Acoustical Drywall order.
  - The USG Ensemble™ Spray-Applied Finish is similar to flat finish paint in sheen. Different sheens are not offered at this time.
  - Certain very deep tone colors or certain very bright colors may not be possible to match. USG will be able to determine at the time of the custom color sample request.

## PHYSICAL DATA

**Design Guide** Download SC5075 at usg.com/ensemble

**ASTME1264 Classification** Type XX - Gypsum, Pattern G, Fire Class A

**Weight** Total system weight 3.2 lb/ft<sup>2</sup>

**Maintenance** Download SC5048 at usg.com/ensemble

**ASTME84 and CAN/ULC S102 surface-burning characteristics** Class A Flame Spread: 25 or less Smoke developed: 50 or less

**Notice**  
The information in this document is subject to change without notice. CGC Inc. or USG Corp. assumes no responsibility for any errors that may inadvertently appear in this document.

SC3238/rev. 6-22  
© 2022 USG Corporation and/or its affiliates. All rights reserved. Printed in USA

Manufactured by USG Interiors, LLC  
550 West Adams Street  
Chicago, IL 60661

The trademarks USG, CGC, COMPASSO, ENSEMBLE, FOUR-SIDED TAPER, SHEETROCK, IT'S YOUR WORLD. BUILD IT., the USG and CGC logos, the design elements and colors, and related marks are trademarks of USG Corporation or its affiliates.  
Declare is a trademark of International Living Future Institute.  
The trademark BENJAMIN MOORE is a registered trademark of Benjamin Moore & Co.  
The trademark SHERWIN-WILLIAMS is a registered trademark of The Sherwin-Williams Company. The trademark PANTONE is the property of Pantone LLC.

Safety First! Follow good safety/ industrial hygiene practices during installation. Wear appropriate personal protective equipment. Read SDS and literature before specification and installation.

