

USG ENSEMBLE™ ACOUSTICAL DRYWALL CEILING—RETURN AIR PLENUM

SEAMLESS APPEARANCE WITH EXCELLENT ACOUSTIC PERFORMANCE



USG Ensemble™
Acoustical Drywall Ceiling
Mind+ Neurology - Grand Chute Clinic
Architect: EUA
Photo: ©Peter McCullough Photo
+ Drone LLC

FEATURES AND BENEFITS

- Suitable for return-air ceiling plenum with differential pressure when direct mounted with 1" or 2" Z-Furring channel to fire taped suspended or direct mounted drywall ceiling.
- Suitable for return-air ceiling plenum with differential pressure when using USG Sheetrock® Brand Ensemble™ RAP Four-Sided Taper™ Panel in either direct mount or suspended applications.
- Monolithic appearance with fine finish in standard white and custom colors.
- Perforated USG Sheetrock® Brand Ensemble™ Four-Sided Taper™ Panels, USG High-NRC Backer Panels and acoustically transparent USG Ensemble™ Spray-Applied Finish optimize sound absorption in the system; up to NRC 0.90. See SC365856 for all design and system performance options.
- Installs and finishes using traditional drywall techniques and USG Ensemble™ Spray-Applied Finish.
- Backed by USG's design and engineering, certified installer and sales support network, and full system warranty.

APPLICATIONS

- Lobbies
- Atria
- Concourses
- Museums
- Performing Arts Spaces
- Corporate Interiors
- Board Rooms/
Executive Offices
- Classrooms/
Higher Education
- Hospitality
- Restaurants

TO ORDER SAMPLES, GO TO USG.COM OR CGCINC.COM

STANDARD COLOR



Flat White
050

CUSTOM COLOR



Unlimited
Color Options

USG ENSEMBLE™ ACOUSTICAL DRYWALL CEILING—RETURN AIR PLENUM

ORDER SAMPLES/LITERATURE
USG: usg.com or samplifit@usg.com
CGC: contact Sales Representative

TECHNICAL SERVICES
800.USG.4YOU (874-4968)

TECHNICAL INFORMATION
usg.com/ensemble
usg.ecomedes.com



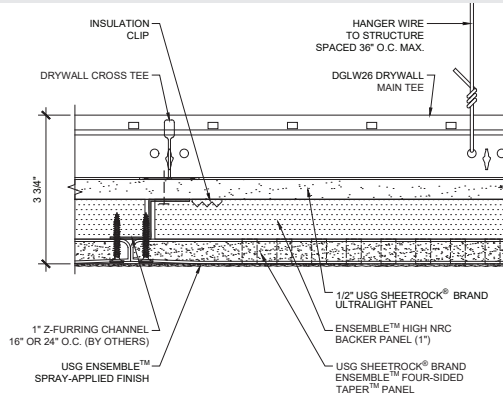
PRODUCT CERTIFIED
FOR LOW CHEMICAL
EMISSIONS:
ULCOM/GG
UL 2818



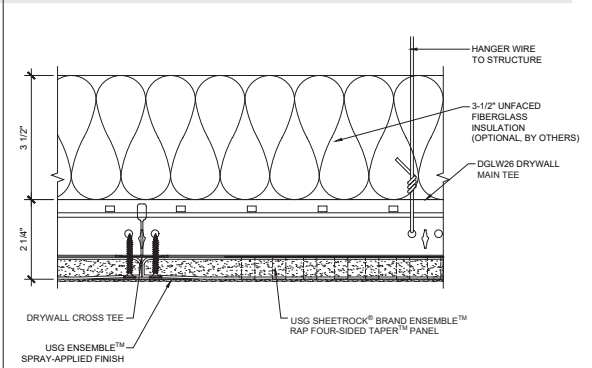
Declare.

Declare® Labels on select finishes,
see usg.ecomedes.com for more
details and documentation.

Standard Ensemble™ Direct Mount



Ensemble™ RAP Suspended



PERFORMANCE DATA

Base Panel	Framing	Backer Panel	NRC ⁹	CAC ⁹	LR	Fire Performance
5/8" USG Sheetrock® Brand Ensemble™ Four-Sided Taper™ Panels ^{2,4}	1" or 2" Z-furring	1" USG Ensemble™ High-NRC	0.80	46-50 ¹⁰	.87	Class A
		2" Thick Fiberglass Board, 6lb/ft ³ (by others)	0.90			
5/8" USG Sheetrock® Brand Ensemble™ RAP Four-Sided Taper™ Panels ³	DGLW26	None	0.70	26	.87	Class A
	DGLW424	3-1/2" unfaced fiberglass insulation	0.75	45		

SYSTEM COMPONENTS

Products	Item Number	Sizes	Packaging	Quantity	Notes
1" or 2" 20 ga. Z-Furring Channel ⁸ (by others)	—	—	—	—	24" o.c. framing
Insulation Impaling Clip ⁸ (by others, AST Acoustics or equal)	—	—	—	—	Two clips for each backer panel
5/8" USG Sheetrock® Brand Ensemble™ Four-Sided Taper™ Panels ²	ENSPNL96, ENSPNL120	5/8" x 4' x 8', 5/8" x 4' x 10'	26-pc. unit	8'-832 sq. ft./unit 10'-1040 sq. ft./unit	Gypsum panel highly engineered to perform like an acoustical ceiling panel
5/8" USG Sheetrock® Brand Ensemble™ RAP Four-Sided Taper™ Panels ³	ENSRPNL96, ENSRPNL120	5/8" x 4' x 8', 5/8" x 4' x 10'	26-pc. unit	8'-832 sq. ft./unit 10'-1040 sq. ft./unit	Gypsum panel highly engineered to perform like an acoustical ceiling panel. Designed for use in return air plenum applications.
1" USG Ensemble™ High-NRC Backer Panels	ENSHINRC	1" x 15.5" x 47.75" 1" x 23.5" x 47.75"	4-pc. unit	21.3 sq. ft./carton 31.3 sq. ft./carton	Acoustical base mat for High-NRC/High-CAC ⁹
1/2" USG Sheetrock® Brand UltraLight Panels	141134	1/2" x 4' x 8-16'	Two panels per bundle	—	Gypsum panel used to create air barrier from plenum above. Enhanced sag resistance to accommodate maximum framing spacing of 24" o.c. for parallel or perpendicular application.
2" Thick Fiberglass Board, 6lb/ft ³ (by others, Knauf Ecosse® or equal)	—	—	—	—	Acoustical base mat for High-NRC/High-CAC ⁹
3-1/2" Unfaced Fiberglass Insulation (by others) ⁹	—	—	—	—	Insulation laid over grid
USG Sheetrock® Brand Paper Joint Tape	—	250' roll	20 rolls per carton	5,000 LF/ctn	Specially formulated paper tape
USG Sheetrock® Brand All Purpose Joint Compound	USAPJC	4.5-gal. pail	Single pail 48-pail pallet	216 gal./pallet	Coverage 100 sq. ft./gal. 450 sq. ft./4.5-gal. pail
USG Sheetrock® Brand Plus 3® Joint Compound	—	4.5-gal. pail	Single pail 48-pail pallet	216 gal./pallet	Coverage 106 sq. ft./gal. 480 sq. ft./4.5-gal. pail
USG Ensemble™ Spray-Applied Finish, White, Black, Custom Colors	ENSSPRAF	4.5-gal. pail	Single pail 48-pail pallet	216 gal./pallet	Coverage 80-100 sq. ft./4.5-gal. pail

USG ENSEMBLE™ ACOUSTICAL DRYWALL CEILING—RETURN AIR PLENUM

ORDER SAMPLES/LITERATURE
USG: usg.com or samplit@usg.com
CGC: contact Sales Representative

TECHNICAL SERVICES
800 USG.4YOU (874-4968)

TECHNICAL INFORMATION
usg.com/ensemble
usg.ecomedes.com



PRODUCT CERTIFIED
FOR LOW CHEMICAL
EMISSIONS:
ULCOM/GG
UL 2818

USG ENSEMBLE™ ACOUSTICAL DRYWALL COLOR PROGRAM



CUSTOM
COLOR



Declare® Labels on select finishes,
see usg.ecomedes.com for more
details and documentation.

The USG Ensemble™ Acoustical Drywall Ceiling and Wall systems are available in white and by custom color matching through the following companies:

- Benjamin Moore®
- Sherwin-Williams®
- PANTONE®



How the program works:

1. Minimum order quantity for USG Ensemble™ Spray-Applied Finish is 8 pails.
2. Request customer color samples through your local USG Ensemble™ sales representative.
3. Allow three weeks to receive custom color sample.
4. Once the color sample is approved and the order is placed by the purchaser, allow three weeks for the custom-colored USG Ensemble™ Spray-Applied Finish to ship with the USG Ensemble™ Acoustical Drywall order.
5. The USG Ensemble™ Spray-Applied Finish is similar to flat finish paint in sheen. Different sheens are not offered at this time.
6. Certain very deep tone colors or certain very bright colors may not be possible to match. USG will be able to determine at the time of the custom color sample request.

PHYSICAL DATA

Design Guide

Download SC5075 design guide and
SC385856 systems guide at usg.com/ensemble

Product Classification

ASTM E1264 Classification
Type XX – Gypsum, Pattern E

Fire Classification

ASTM E84 and CAN/ULC S102
surface-burning characteristics
Class A
Flame Spread: 25 or less
Smoke developed: 50 or less

Weight

Sheetrock® Brand Ensemble™
Four-Sided Taper™ Panels: 1.5 lb./sq. ft.
Ensemble™ High-NRC
Backer Panels: 1.25 lb./sq. ft.

Maintenance

Download SC5048 at usg.com/ensemble

Notes

1. For interior ceilings only.
2. Suitable for return-air ceiling plenum with differential pressure when direct mounted with 1" or 2" Z-Furring channel to fire taped suspended or direct mounted drywall ceiling.
3. Suitable for return-air ceiling plenum with differential pressure when using USG Sheetrock® Brand Ensemble™ RAP Four-Sided Taper™ Panel in suspended applications.
4. Ensemble™ Direct Mount shall be properly fastened to framing, and considerations shall be given to the load-carrying capacity of the framing system.
5. In a direct mount application, all penetrations must be sealed with Sheetrock® Brand Firecode® Smoke-Sound Sealant.
6. In a suspended application with the Ensemble™ RAP Panel, any gaps around penetrations must be sealed with USG Sheetrock® Brand Firecode® Smoke-Sound Sealant and a minimum of 4" of USG Sheetrock® Brand Plus 3® Joint Compound skimmed around each penetration.
7. In order to ensure installed performance, component substitutions should not be permitted.
8. Refer to Z-Furring channel and Impaling Clip manufacturer's literature.
9. For all design and system performance options, see: *USG Ensemble™ Acoustical Drywall Ceiling Systems Selector Guide*, SC365856.
10. CAC estimated based on testing of solid drywall ceilings.

Notice

The information in this document is subject to change without notice. CGC Inc. or USG Corp. assumes no responsibility for any errors that may inadvertently appear in this document.

SC281069/9-24

© 2024 USG Corporation and/or its affiliates. All rights reserved.
Printed in USA

Manufactured by
USG Interiors, LLC
550 West Adams Street
Chicago, IL 60661

The trademarks USG, CGC, ENSEMBLE, FIRECODE, SHEETROCK, FOUR-SIDED TAPER, PLUS 3, IT'S YOUR WORLD. BUILD IT., the USG and CGC logos, the design elements and colors, and related marks are trademarks of USG Corporation or its affiliates. ECOSE is a trademark of Knauf Insulation, Inc.
Declare is a trademark of International Living Future Institute.
The trademark BENJAMIN MOORE is a registered trademark of Benjamin Moore & Co.
The trademark SHERWIN-WILLIAMS is a registered trademark of the The Sherwin-Williams Company.
The trademark PANTONE is the property of Pantone LLC.

Safety First! Follow good safety/industrial hygiene practices during installation. Wear appropriate personal protective equipment. Read SDS and literature before specification and installation.

