

## USG STRUCTURAL PANEL CONCRETE ROOF DECK

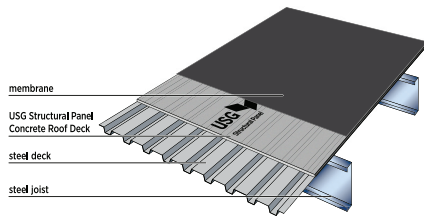
### ENHANCED STEEL DECK APPLICATION

- The only cementitious structural panel approved by Factory Mutual (FM)
- Three easy steps: lay, fasten, finish
- No pouring, no setting, no curing
- Mold-, moisture- and termite-resistant
- Noncombustible per latest active ASTM standard E136
- Manufactured in USA

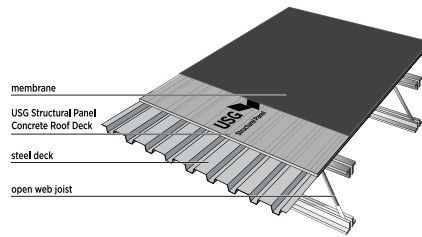
## TYPICAL APPLICATIONS

### USG Structural Panel Concrete Roof Deck

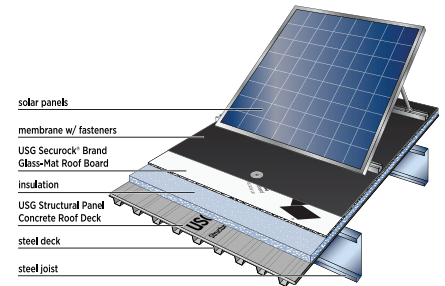
Steel Joist Steel Deck – Membrane Direct



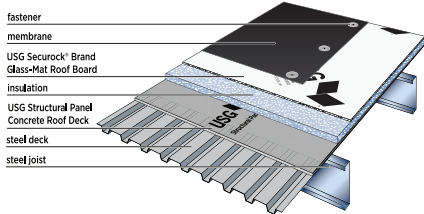
Open Web Joist Steel Deck – Membrane Direct



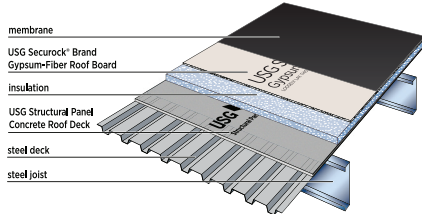
Steel Joist Steel Deck – Glass-Mat Roof Board Solar Panels



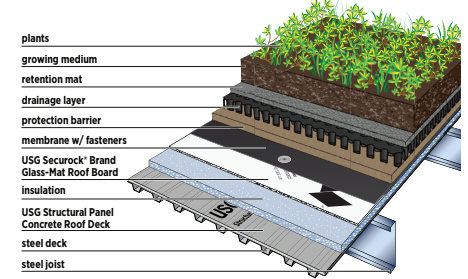
Steel Joist Steel Deck – Glass-Mat Roof Board



Steel Joist Steel Deck – Gypsum-Fiber Roof Board



Steel Joist Steel Deck – Glass-Mat Roof Board



### USG Structural Panel Concrete Roof Deck as a Roof Substrate

USG Structural Panel Concrete Roof Deck is the latest example of USG application innovation. When applied over corrugated roof decks, the USG Concrete Roof Deck strength enhances the existing roof deck making it tougher and more durable to the elements. USG's Concrete Roof Deck is an alkali-resistant, fiberglass reinforced, cementitious matrix that delivers exceptional strength and performance in roofing applications.

### Challenges of Flat Roof Systems

Today's low-slope roof systems are lighter and more cost-effective to construct when compared to concrete roof systems or ballasted roof design of days of old. Although lighter and simpler, lightweight roof decks compromise on strength, safety, durability and stability.

Using the USG Concrete Roof Deck as an enhanced substrate on steel decks provides a solution for the demanding conditions of low-sloped roofs.

### Robustness

Strength of lightweight steel deck roof systems can be challenging. Wind uplift, durability and impact resistance are always a concern. The USG Concrete Roof Deck can add strength to the roof whether you need help in supporting HVAC units, support for solar panels or adding access pathways for workers.

### Fire Protection

USG's Concrete Roof Deck is a noncombustible roofing panel and tested in accordance with the International Building Code (IBC) requirements of Section 703.5.1 as per the active ASTM standard E136, which can help protect your building from the ravages of a fire. The proof is in the certification. The USG Concrete Roof Deck is the main component of several UL-certified roof assemblies, including P561, P562 and the 2-hour rated UL P573.

### Weather Resistance

Low-sloped roofs are exposed to the elements: the heat of the beating sun and loading that results from heavy snow build-up and strong wind uplift. Today's lightweight steel decks need all the help they can get to maintain their longevity. USG's Concrete Roof Deck can enhance a steel deck's durability when exposed to harsh weather.

### Noise Reduction

The USG Concrete Roof Deck at 3/4" thick can help reduce transmission of outside (or inside) airborne noise, thereby making the area inside the building more comfortable to its occupants.

MSRP based upon full truckload delivered to jobsite:  
Roof Deck: \$5.40/sf

SCP98-USA-ENG/1-20  
© 2020 USG Corporation and/or its affiliates.  
All rights reserved. Printed in USA

Manufactured by or for United States Gypsum Company  
550 West Adams Street, Chicago, IL 60661

800 874-4968 | [usg.com/structural](http://usg.com/structural) | [usgstructural@usg.com](mailto:usgstructural@usg.com)



### PRODUCT INFORMATION

See [usg.com/structural](http://usg.com/structural) for the most up-to-date product information.

### TRADEMARKS

The trademarks USG, SECURLOCK, IT'S YOUR WORLD. BUILD IT., the USG logo, the design elements and colors, and related marks are trademarks of USG Corporation or its affiliates.

### NOTICE

We shall not be liable for incidental or consequential damages, directly or indirectly sustained, nor for any loss caused by application of these goods not in accordance with current printed instruction or for other than the intended use. Our liability is expressly limited to replacement of defective goods. Any claim shall be deemed waived unless made in writing to us within thirty (30) days from date it was or reasonably should have been discovered.

### SAFETY FIRST!

Follow good safety/industrial hygiene practices during installation. Wear appropriate personal protective equipment. Read SDS and literature before specification and installation.

