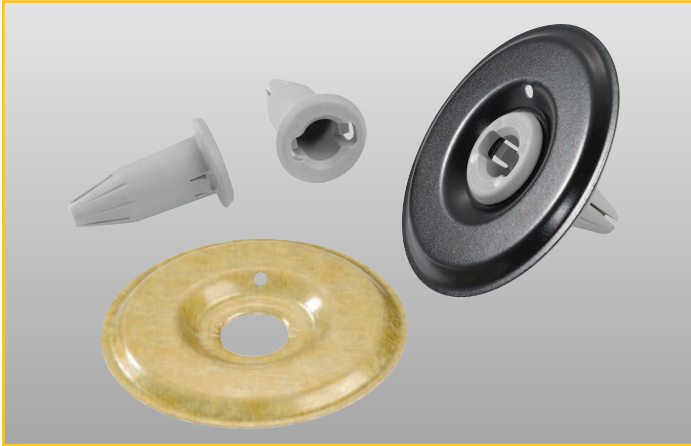


TREADSAFE™ TUBE FASTENING SYSTEM



Overview

The TreadSafe Tube Fastening System is designed for use in compressible insulation to minimize the potential for the fastener to penetrate the roofing membrane. When used in conjunction with specially designed RhinoBond® Plates, TreadSafe provides an insulation and membrane attachment system for securing TPO and PVC roofing membranes. The system is Factory Mutual approved and accommodates Versico HPVX and RetroDriller fasteners. TreadSafe can also be used over non-compressible insulation to limit thermal bridging.

TreadSafe tubes and compatible RhinoBond Plates are packaged in plastic weather-resistant buckets. Each bucket contains 250 tubes and 250 plates.

Features and Benefits

- Tubes are designed to accommodate the normal deflection of compressible roof insulation, minimizing the potential for the fastener to penetrate the roofing membrane
- FM-approved and compatible with FM- and CE-approved mineral wool, as well as polyisocyanurate insulation
- Patented TreadSafe Tubes lock onto compatible RhinoBond Plates to securely hold fasteners in place
- RhinoBond Plates meet FM 4470 and ETAG 006 criteria for corrosion resistance

Installation

For best results, the minimum insulation thickness should be 2" (51 mm) to accommodate deflection. Simply insert the TreadSafe plastic tube into the hole in the center of the RhinoBond plate then insert the fastener through the hole in the TreadSafe tube.

FOLLOW VERSICO FASTENER AND RHINOBOND SYSTEM INSTALLATION INSTRUCTIONS AND REVIEW CURRENT VERSICO SPECIFICATIONS AND DETAILS FOR SPECIFIC INSTALLATION REQUIREMENTS.

Precautions

1. Eye protection is recommended during installation.
2. Use care to avoid over-torquing the fastener.
3. Do not expose plates to UV for extended periods.

TYPICAL PROPERTIES AND CHARACTERISTICS

Product	Packaging	Weight (lbs)	Material
80 mm round plates	250 ea. plates and tubes (unassembled)	21	Coated Galvalume
40 mm TreadSafe Tubes	250 ea. plates and tubes (unassembled)	21	Polymer

Typical properties and characteristics are based on samples tested and are not guaranteed for all samples of this product. This data and information is intended as a guide and does not reflect the specification range for any particular property of this product.