

PRODUCT REFERENCE GUIDE





VERSIGARD®

EPDM Accessories

QUICK-APPLIED SEAM TAPE



A fully cured synthetic rubber product used for field seaming cured EPDM membrane in ballasted, adhered and mechanically attached roofing systems.

Sizes Available:

- 3" x 100' – Product Number: 301939 – Black
- 3" x 100' – Product Number: 309817 – White
- 6" x 100' – Product Number: 302953 – Black
- 6" x 100' – Product Number: 317501 – White

Quantity Per Box:

4 rolls (3"), 2 rolls (6")

QUICK-APPLIED CURED COVERSTRIP



As tough as field membrane, this product is the optimal solution to overlay seam plates, strip in seams and metal edgings or make roof repairs.

Sizes Available:

- 6" x 100' – Product Number: 309774 – Black
- 6" x 100' – Product Number: 309813 – White
- 9" x 100' – Product Number: 309776 – Black
- 9" x 100' – Product Number: 309814 – White
- 12" x 50' – Product Number: 317601 – Black
- 12" x 50' – Product Number: 317599 – White

Quantity Per Box:

2 rolls (6"), 1 roll (9" and 12")

QUICK-APPLIED CURB FLASHING



Cured EPDM membrane cut to 20" wide width with 6" QA Tape already applied. This product provides the most efficient way to flash curbs and short walls.

Sizes Available:

- 20" x 50' – Product Number: 309775 – Black
- 20" x 50' – Product Number: 309816 – White

Quantity Per Box: 1 roll

FULLY QUICK-APPLIED CURB FLASHING

Also Available (Not shown)

Sizes Available:

- 20" x 50' – Product Number: 315839 – Black

Quantity Per Box: 1 roll

QUICK-APPLIED UNCURED EPDM FLASHING



Uncured EPDM laminated to a butyl-based polymer adhesive. QA Flashing can be used to flash corners, pipes and other penetrations.

Sizes Available:

- 6" x 100' – Product Number: 302682 – Black
- 6" x 100' – Product Number: 315992 – White
- 9" x 50' – Product Number: 303484 – Black
- 9" x 50' – Product Number: 309985 – White
- 12" x 50' – Product Number: 309773 – Black
- 12" x 50' – Product Number: 309986 – White

Quantity Per Box:

2 rolls (6"), 1 roll (9" and 12")

QUICK-APPLIED RTS



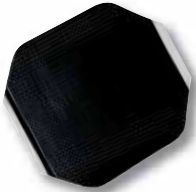
Reinforced Termination Strip (RTS) combines reinforced EPDM with 3"-wide Quick-Applied tape for additional membrane securement. A 9" version with 3"-wide Quick-Applied tape on both sides permits securement of perimeter sheeting on mechanically attached systems.

Sizes Available:

- 6" RTS – Product Number: 301944 – Black
 - 6" RTS – Product Number: 309818 – White
- Use with all EPDM Systems*
- 9" RTS – Product Number: 301945
- Use with Mechanically Attached EPDM Systems*

Quantity Per Box:

2 rolls (6"), 1 roll (9")

QUICK-APPLIED T-JOINT COVERS


Required to overlay T-Joint intersections of splices in the field as well as at angle changes for wall flashings. The 12" x 12" T-Joint Cover is required for 30-year warranty systems and is used in conjunction with Lap Sealant.

Sizes Available:

6" x 6" – Product Number: 304029 – Black
 12" x 12" – Product Number: 305089 – Black

Quantity Per Box: 20

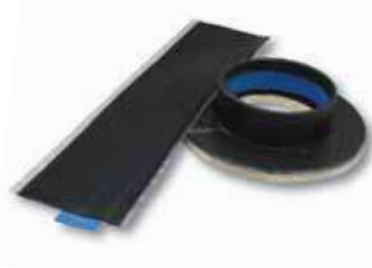
QUICK-APPLIED INSIDE/OUTSIDE CORNERS


Pre-cut corners that greatly reduce installation time and can be used for inside and outside corner installations.

Sizes Available:

7" x 9" – Product Number: 303325 – Black
 7" x 9" – Product Number: 310310 – White

Quantity Per Box: 20

QUICK-APPLIED POURABLE SEALER POCKETS


Versico's uncured EPDM Flashing with a synthetic rubber adhesive and a 2" support strip pre-applied to the flashing. Sizes can be combined to form larger pockets when required.

Sizes Available:

4" dia. – Product Number: 303322 – Black
 6" dia. – Product Number: 303323 – Black
 6" dia. – Product Number: 316243 – White
 8" dia. – Product Number: 303324 – Black

Quantity Per Box: 12

QUICK-APPLIED PIPE SEALS


Pre-applied adhesive on the bottom of the deck flange increases the speed and ease of installation. The pre-applied adhesive ensures consistent coverage and strong adhesion to the membrane.

Sizes Available:

½" – 3" – Product Number: 302684 – Black
 1" – 6" – Product Number: 309812 – Black
 1" – 6" – Product Number: 317066 – White

Quantity Per Box: 10

QUICK-APPLIED WALKWAY PADS


Standard molded walkway pads have Quick-Applied Tape pre-applied to the underside of the pad. QA Walkway Pads are designed to protect the membrane in areas exposed to repetitive foot traffic. Versico recommends the use of QA Walkway Pads with all Versico roofing systems.

Sizes Available:

30" x 30" – Product Number: 300829 – Black
 30" x 30" – Product Number: 309589 – White

Quantity Per Pallet: 50

REINFORCED FLASHING



Pre-slit reinforced membrane used to strip-in fasteners and plates and to overlay end laps on VersiFleece and VersiWeld QA membranes.

TPO

Sizes Available:

45-mil

6" x 100' – Product Number: 300485 – White

6" x 100' – Product Number: 300486 – Gray

6" x 100' – Product Number: 302811 – Tan

60-mil

9" x 50' – Product Number: 310419 – White

9" x 50' – Product Number: 310417 – Gray

9" x 50' – Product Number: 310418 – Tan

80-mil

9" x 50' – Product Number: 318404 – White

Quantity Per Box: 3 rolls (6"), 2 rolls (9")

PVC

Sizes Available:

8" x 80' – Product Number: 318669 – White
(60-mil KEE reinforced)

8" x 65' – Product Number: 318670 – White
(80-mil KEE reinforced)

Gray and tan also available.

Quantity Per Box: 2 rolls (60-mil), 1 roll (80-mil)

NON-REINFORCED FLASHING



Non-reinforced thermoplastic membrane used to field-fabricate pipe flashings, sealant pockets and scuppers when the use of a pre-molded accessory is not feasible.

TPO

Sizes Available:

60-mil

12" x 50' – Product Number: 300473 – White

12" x 50' – Product Number: 300479 – Gray

12" x 50' – Product Number: 300476 – Tan

24" x 50' – Product Number: 300474 – White

24" x 50' – Product Number: 300480 – Gray

24" x 50' – Product Number: 300477 – Tan

Quantity Per Box: 1 roll

PVC

Sizes Available:

80-mil

12" x 50' – Product Number: 323792 – White/White

12" x 50' – Product Number: 323794 – Gray/Tan

24" x 50' – Product Number: 323793 – White/White

24" x 50' – Product Number: 323795 – Gray/Tan

Quantity Per Box: 1 roll

TPO PRESSURE-SENSITIVE RUSS



10" RUSS (shown) is used in place of narrow-width sheets to secure membrane in the perimeter of the roof on mechanically attached systems. 6" RUSS is also available and is used to secure membrane at the base of vertical walls for additional membrane securement without penetrating the sheet.

Sizes Available:

6" x 100' – Product Number: 303373

10" x 100' – Product Number: 305442

Quantity Per Box: 1 roll (10"), 2 rolls (6")

TPO PRESSURE-SENSITIVE COVERSTRIP



Non-reinforced TPO laminated to pressure-sensitive tape used for stripping in flat metal flanges such as shop-bent drip edge.

Sizes Available:

6" x 100' – Product Number: 303102 – White

6" x 100' – Product Number: 303103 – Gray

6" x 100' – Product Number: 303104 – Tan

Quantity Per Box: 2 rolls

PVC YELLOW WARNING STRIP



Reinforced PVC Yellow Warning Strip can be used on PVC to indicated roof edges or other hazards.

Sizes Available:

12" x 150' – Product Number: 322980

Quantity Per Box: 1 roll



YELLOW PS COVERSTRIP

Non-reinforced coverstrip can be used on TPO or EPDM to indicate roof edges or other hazards.

Sizes Available:

12" x 100' – Product Number: 318250

Quantity Per Box: 1 roll



SQUARE TUBING WRAPS



Fabricated using 60-mil reinforced VersiWeld and VersiFlex membrane and designed to flash square metal tubing. A split and overlap tab are incorporated into these parts to allow the flashings to be opened and wrapped around a square penetration with an obstruction. Other sizes available through special order. Gray and tan also available.

TPO

Sizes Available:

3" x 3" – Product Number: 305576 – White
4" x 4" – Product Number: 305577 – White
5" x 5" – Product Number: 305578 – White
6" x 6" – Product Number: 305579 – White

Quantity Per Box: 8

PVC

Sizes Available:

3" x 3" – Product Number: 307742 – White
4" x 4" – Product Number: 307745 – White
6" x 6" – Product Number: 307748 – White
3" x 3" – Product Number: 307743 – Gray
4" x 4" – Product Number: 307746 – Gray
6" x 6" – Product Number: 307749 – Gray

Quantity Per Box: 8

SPLIT PIPE SEALS



Fabricated flashings made of 60-mil reinforced VersiWeld and VersiFlex membrane used for flashing pipes with an obstruction that prevents the use of a molded pipe seal. Other sizes available through special order. Gray and tan also available.

TPO

Sizes Available:

1" – Product Number: 303504 – White
2" – Product Number: 303505 – White
3" – Product Number: 303506 – White
4" – Product Number: 303507 – White
5" – Product Number: 303508 – White
6" – Product Number: 303509 – White

Quantity Per Box: 8

PVC

Sizes Available:

1" – Product Number: 307724 – White
1" – Product Number: 307725 – Gray
1" – Product Number: 307726 – Tan
2" – Product Number: 307727 – White
2" – Product Number: 307728 – Gray
2" – Product Number: 307729 – Tan
3" – Product Number: 307730 – White
3" – Product Number: 307731 – Gray
3" – Product Number: 307732 – Tan
4" – Product Number: 307733 – White
4" – Product Number: 307734 – Gray
4" – Product Number: 307735 – Tan
5" – Product Number: 307736 – White
5" – Product Number: 307737 – Gray
6" – Product Number: 307739 – White
6" – Product Number: 307740 – Gray

Quantity Per Box: 8

MOLDED PIPE SEALS



Injection-molded, pre-formed flashings.

TPO

Sizes Available:

¾"– 8" dia. – Product Number: 316534 – White
¾"– 8" dia. – Product Number: 316536 – Tan
¾"– 8" dia. – Product Number: 316535 – Gray

Quantity Per Box: 8

PVC

Sizes Available:

¾"– 8" dia. – Product Number: 316537 – White
¾"– 8" dia. – Product Number: 322959 – Gray
¾"– 8" dia. – Product Number: 323823 – Tan

Quantity Per Box: 8

TPO PREFABRICATED SEALANT POCKETS



Reinforced TPO membrane laminated to TPO-coated metal. This pocket is designed to waterproof large penetrations such as I-beams and clusters of pipes. Other sizes are available through special order.

Sizes Available:

12" – Product Number: 308344 – White

Quantity Per Box: 2 complete pockets

MOLDED SEALANT POCKETS



Interlocking, two-piece, injection-molded and weldable pockets used to waterproof pipe clusters or other oddly shaped penetrations.

TPO

Sizes Available:

6" wide x 2" high

Can be adjusted from 7½" to 11½" in length

Product Number: 316539 – White

Product Number: 316540 – Gray

Product Number: 316541 – Tan

Quantity Per Box: 5 complete pockets

PVC

Sizes Available:

6" wide x 2" high

Can be adjusted from 7½" to 11½" in length

Product Number: 316542 – White

Quantity Per Box: 5 complete pockets

CURB WRAP CORNERS



Fabricated flashings made of 60-mil reinforced VersiWeld membrane designed to reduce curb flashing time. Each corner has a 6"-wide base flange and a 12" overall height. One curb will require 4 corners. Other sizes and colors available through special orders. Can also be ordered in 1- or 2-piece wraps.

TPO

Sizes Available:

7" Wrap for 12" Curb –

Product Number: 305062 – White

13" Wrap for 24" Curb –

Product Number: 305063 – White

19" Wrap for 36" Curb –

Product Number: 305064 – White

Quantity Per Box: 12 pieces or 3 complete curbs

PVC

Sizes Available:

7" Wrap for 12" Curb –

Product Number: 322973 – White

Product Number: 322970 – Gray

Product Number: 322977 – Tan

13" Wrap for 24" Curb –

Product Number: 322975 – White

Product Number: 322971 – Gray

Product Number: 322978 – Tan

19" Wrap for 36" Curb –

Product Number: 322976 – White

Product Number: 322972 – Gray

Product Number: 322979 – Tan

Quantity Per Box: 12 pieces or 3 complete curbs

TPO SEALANT POCKET EXTENSIONS



Reinforced TPO laminated to TPO-coated metal and used to extend the lengths of the molded or prefabricated sealant pockets.

Sizes Available:

2" x 10" – Product Number: 307769 – White

Quantity Per Box: 10

INSIDE/OUTSIDE CORNERS



Pre-molded and used for flashing inside and outside corners on a variety of details.

TPO

Sizes Available: One Size

Product Number: 300020 – Gray – Outside
Product Number: 300025 – Tan – Outside
Product Number: 300016 – White – Outside
Product Number: 307406 – White – Inside
Product Number: 307407 – Tan – Inside
Product Number: 307408 – Gray – Inside

Quantity Per Bag: 12

PVC

Sizes Available: One Size

Product Number: 307715 – White/Gray – Outside
Product Number: 307712 – White/Gray – Inside

Quantity Per Bag: 12

WALKWAY ROLLS AND PADS



Heat-weldable walkway rolls designed to protect Versico's TPO and PVC membranes in areas exposed to repetitive foot traffic and other hazards.

TPO WALKWAY ROLLS

Sizes Available:

34" x 50' – Product Number: 310508 – White
34" x 50' – Product Number: 310509 – Gray
34" x 50' – Product Number: 310510 – Tan
Packaged Individually



PVC WALKWAY ROLLS

Sizes Available:

36" x 60' – Product Number: 307711 – Gray
Packaged Individually

T-JOINT COVERS



Injection-molded non-reinforced flashings used to seal T-Joint splice intersections.

TPO

Sizes Available:

4½" dia. – Product Number: 307476 – White
4½" dia. – Product Number: 307477 – Tan
4½" dia. – Product Number: 307478 – Gray

Quantity Per Box: 100

PVC

Sizes Available:

4½" dia. – Product Number: 308224 – White
4½" dia. – Product Number: 309494 – Gray
4½" dia. – Product Number: 309847 – Tan

Quantity Per Box: 100

COATED METAL



24-gauge (0.6 mm) galvanized steel sheet that is coated with a layer of .035" non-reinforced flashing. Membrane may be welded directly to the coated metal. The sheet is cut to the appropriate width and used to fabricate metal drip edges or other roof perimeter edging profiles.

TPO

Sizes Available:

10 Pcs/Pallet –
4' x 10' – Product Number: 309272 – White
4' x 10' – Product Number: 309274 – Tan
4' x 10' – Product Number: 309273 – Gray

25 Pcs/Pallet –

4' x 10' – Product Number: 303181 – White
4' x 10' – Product Number: 303182 – Tan
4' x 10' – Product Number: 303183 – Gray

PVC

Sizes Available:

10 Pcs/Pallet –
4' x 10' – Product Number: 307708 – White
4' x 10' – Product Number: 307710 – Tan
4' x 10' – Product Number: 307709 – Gray

HPV FASTENER

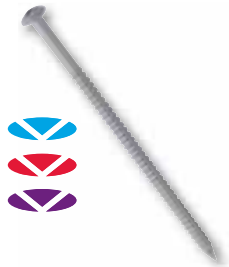


Applicable to steel, 22-gauge and heavier, CDX plywood and wood plank deck types. Can be used to secure VersiGard reinforced membranes, RTS and for insulation securement. Longer fastener sizes available as special order.

Sizes Available:
1 1/4", 2"– 15"
(1" Increments)

Size & Quantity Per Box:
1 1/4", 2"– 6": 1,000;
7"– 12": 500;
13"– 15": 250;
1 1/4": 1000

MP 14-10



A #14 diameter fastener used for VersiGard reinforced, VersiWeld and VersiFlex membrane securement into wood and concrete decks. Also applicable to insulation securement into steel, wood and concrete decks.

Sizes Available:
1 1/4", 1 3/4", 2"– 14"
(1" Increments)

Size & Quantity Per Box:
1 1/4"– 4": 1,000; 5"– 11": 500;
12"– 14": 250

GYPTEC FASTENER & PLATE



Applicable to cementitious wood fiber, lightweight concrete and gypsum decks. Can be used to secure VersiGard reinforced, VersiWeld and VersiFlex membranes and insulation.

Sizes Available:
2 1/2"– 10" (1/2" Increments)

Size & Quantity Per Box:
2 1/2"– 7": 500; 7 1/2"– 10": 250

GYPTEC PLATE

Sizes Available:
2" Metal membrane plate
3" Metal insulation plate

Quantity Per Box:
1,000

INSULTITE ASAP WITH POLYMER PLATE



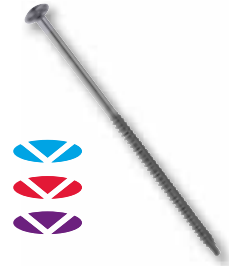
A pre-assembled #12 diameter fastener and plastic insulation plate applicable to steel and wood decks. Used to secure insulation only. Longer fastener sizes available as special order.

Sizes Available:
2 1/4", 3"– 8" (1" Increments)

Size & Quantity Per Box:
2 1/4"– 8": 250



INSULTITE

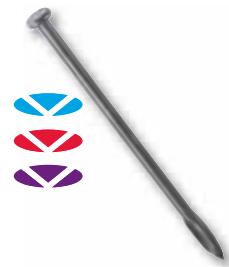


A #12 diameter fastener applicable to wood decks and steel, 22-gauge and heavier, decks. Used only for insulation attachment.

Sizes Available:
1 5/8", 2 1/4", 3"– 8" (1" Increments)

Size & Quantity Per Box:
1 5/8": 1,000
2 1/4": 1,000
3"– 8": 1,000

CD-10



Applicable for concrete decks. Used to secure VersiGard, VersiWeld and VersiFlex membranes and for insulation securement.

Sizes Available:
2"– 5 1/2" (1/2" Increments)
6"– 12" (1" Increments)

Size & Quantity Per Box:
2"– 8": 500; 9"– 12": 250

HPVX FASTENER & HPV-XL FASTENER



A #15 diameter fastener applicable to steel, wood and CDX plywood. Can be used to secure VersiGard, VersiWeld and VersiFlex membranes.

Sizes Available:
2"– 12" (1" Increments)
14"– 16" (2" Increments)

Size & Quantity Per Box:
2"– 4": 1,000; 5"– 12": 500;
14"– 16": 250

HPV-XL FASTENER

Also Available (Not shown)

A #21 diameter fastener applicable to steel, wood and CDX plywood decks.

Sizes Available:
2"– 8" (1" increments)

Size & Quantity Per Box:
500 (2" – 6"), 250 (7" – 8")

HPVX ASAP



A pre-assembled HPVX Fastener and HPVX Plate applicable to steel, wood and CDX plywood decks. Used to secure VersiWeld and VersiFlex membranes.

Sizes Available:
2"– 8" (1" Increments)
10"– 14" (2" Increments)

Size & Quantity Per Box:
2"– 8": 250; 10"– 12": 200;
14": 150

HPV ASAP


Pre-assembled HPV Fastener and Polymer seam plate applicable to steel, wood and CDX plywood decks. Used to secure VersiGard reinforced membranes.

Sizes Available:	Size & Quantity Per Box:
2"– 12" (1" Increments)	2": 500; 3": 450;
	4", 5": 400; 6": 350;
	7", 8": 300; 9": 250;
	10"– 12": 200


POLYMER SEAM PLATE


Along with the HPV Fastener, used to mechanically attach reinforced VersiGard membrane and RTS over steel decks.

Sizes Available:	Quantity Per Box:
2" dia.	1,000

HPV-XL POLYMER SEAM PLATE

Also Available (Not shown)

For use with HPV-XL Fastener to secure VersiGard reinforced membrane to steel decks.

Sizes Available:	Quantity Per Box:
2 3/8" dia.	1,000


RHINO BOND® PLATE


3"-round, specially coated plates used with HPVX Fasteners and the RhinoBond induction welding system.

Sizes Available:	Quantity Per Box:
3" dia.	500
Product Number: 317316 – TPO	
Product Number: 318519 – PVC	


INSULATION FASTENING PLATE


Applicable with Insultite, HPV and CD-10 fasteners. Used for insulation securement only on steel, wood and concrete decks. Available in steel or plastic.

Sizes Available:	Quantity Per Box:
3" dia.	1,000

SECURFAST PLATE

Also Available (Not shown)

SecurFast Insulation Fastening Plate is specifically designed for coverboard securement under fully adhered VersiGard, VersiFlex or VersiWeld Roofing Systems.

Sizes Available:	Quantity Per Box:
2 7/8" Hex	1,000

SEAM FASTENING PLATE


Applicable with HPV, MP 14-10 and CD-10 fasteners to mechanically attach VersiGard, VersiWeld and VersiFlex membrane and RTS (excluding steel decks).

Sizes Available:	Quantity Per Box:
2" dia.	1,000


OVAL BARBED PLATE


Use with all VersiFlex PVC polyester-reinforced membranes. These plates are designed to mechanically attach VersiFlex PVC membrane to metal, wood and concrete decks.

Sizes Available:	Quantity Per Box:
1 1/2" X 2 3/4"	500


HPVX PLATE


Along with the appropriate fastener, used to secure VersiWeld and VersiFlex membranes to steel, concrete and wood decks.

Sizes Available:	Quantity Per Box:
2 3/8" dia.	1,000

HPV-XL PLATE

Also Available (Not shown)

For use with HPV-XL Fastener to secure VersiWeld and VersiFlex membranes to steel and wood decks.

Sizes Available:	Quantity Per Box:
2 3/8" dia.	1,000





Adhesives & Sealants

 VersiGard EPDM

 VersiFleece

 VersiWeld TPO

 VersiFleece AC

 VersiFlex PVC

 Low VOC Product

G200SA SUBSTRATE ADHESIVE



A high-strength, solvent-based contact adhesive that allows quick bonding of cured flashings and membranes to various substrates. It is a synthetic rubber adhesive formulated specifically for application with a 1/2" medium nap roller with enough versatility in the tack time to allow large areas to be coated and adhered at one time. G200SA Substrate Adhesive is designed for bonding VersiGard (black and white) non-reinforced, VersiGard reinforced and Epichlorohydrin membranes to approved substrates. G200SA Substrate Adhesive is yellow in color.

Coverage Rate: 60 square feet per gallon of finished surface.

Packaging: 5-gal pail

Product Number: 302141

Shelf Life: 12 months



VERSIWELD TPO BONDING ADHESIVE



A high-strength, solvent-based contact adhesive that allows bonding of VersiWeld membrane to various porous and non-porous substrates. VersiWeld Bonding Adhesive is yellow in color and should be stirred thoroughly until all settled pigments are dispersed and the adhesive is uniform in color.

Coverage Rate: 60 square feet per gallon of finished surface.

Packaging: 5-gal pail

Product Number: 302323

Shelf Life: 12 months



EPDM x-23 LOW-VOC BONDING ADHESIVE*



A high-strength, solvent-based contact adhesive that bonds EPDM membranes to various porous and non-porous substrates. This product meets the <250 gpl VOC content requirements of the OTC Model Rule for Single-Ply Roofing Adhesives. EPDM x-23 Low-VOC Bonding Adhesive is compatible with MP-H and SecurShield™ polyisocyanurate insulation, structural and lightweight insulating concrete, APA non-fire treated plywood, oriented strand board, wood fiberboard, SECUROCK®, DensDeck® Prime, masonry, and various metal finishes. Mixing of adhesive is required.

Coverage Rate: 60 square feet per gallon of finished surface.

Packaging: 5-gal pail

Product Number: 324002

Shelf Life: 12 months



LOW-VOC PVC BONDING ADHESIVE



A high-strength, solvent-based contact adhesive that allows bonding of PVC and KEE-enhanced PVC membrane to various porous and non-porous substrates. It is specially formulated using a blend of VOC-exempt and nonexempt solvents. This product also meets the <250 gpl VOC content requirements of the OTC Model Rule for Single-Ply roofing adhesives.

Coverage Rate: 60 square feet per gallon finished surface.

Packaging: 5-gal pail

Product Number: 309126

Shelf Life: 12 months



HYDROBOND™ PVC WATER-BASED ADHESIVE



A water-based, wet lay-in, one-sided dispersion adhesive that is used to secure VersiFlex PVC and VersiFleece® PVC membranes in adhered systems. HydroBond Water-Based Adhesive can be applied to secure membranes to horizontal surfaces up to a 2:12 slope and as a contact adhesive in vertical applications.

Coverage Rate: Coverage rate can vary. Refer to product TDB.

Packaging: 5-gal pail

Product Number: 322112

Shelf Life: 12 months



LOW-VOC BONDING ADHESIVE & LOW-VOC BONDING ADHESIVE 1168



A high-strength, solvent-based contact adhesive that allows bonding of all EPDM and TPO membrane to various porous and non-porous substrates. This product also meets the <250 gpl VOC content requirements of the OTC Model Rule for Single-Ply Roofing Adhesives. Mixing of adhesive is required.

Coverage Rate: 60 square feet per gallon of finished surface.

Packaging: 5-gal pail

Product Number: 303090

Shelf Life: 12 months



* Not Compliant in all CA counties



Adhesives & Sealants

AQUA BASE 120 BONDING ADHESIVE



A semi-pressure-sensitive water-based adhesive. This product may be used as a two-sided contact adhesive with EPDM, TPO or PVC membranes or as a one-sided adhesive for VersiFleece membranes. Aqua Base 120 is pink in color and dries translucent/yellow.

Coverage Rate: 120 square feet per gallon finished surface. May vary due to conditions such as insulation type or wall construction.

Packaging: 5-gal pail

Product Number: 307431

Shelf Life: 12 months



SOLVENT-FREE EPDM BONDING ADHESIVE



A high-strength, low-odor, polymer-based adhesive that allows fast installation of EPDM membranes and cured flashings to various substrates. This adhesive is specially designed for installing VersiGard (black and white) non-reinforced EPDM membranes.

Coverage Rate: 100 square feet per gallon.

Packaging: 5-gal pail

Product Number: 318127

Shelf Life: 6 months



DASH™/FAST™ ADHESIVE



A low-rise, two-component, insulating polyurethane adhesive. It can be used to adhere a variety of insulations and Versico's VersiFleece membranes, and is applied in beads.

Coverage Rate: See TDB.

Packaging:

50-gal drum – Part A –
Product Number: 304003

15-gal drum – Part A –
Product Number: 304001

50-gal drum – Part B –
Product Number: 304004

15-gal drum – Part B –
Product Number: 304002



DASH DUAL CARTRIDGE

Product Number: 315177

BAG-IN-A-BOX

Part A –
Also available (not shown)
Product Number: 318197

Static Mixing Tip: 305573

Part B –
Also available (not shown)
Product Number: 318198

DUAL CARTRIDGE IC (WINTER GRADE)

Product Number: 315179

Shelf Life: 12 months (Part A and Part B)

BAG-IN-A-BOX WINTER GRADE

Also available (not shown)
Product Number: 318199

CAV-GRIP™



CAV-GRIP is a multi-purpose contact adhesive/primer recommended for enhancing the bond of Versico's Air and Vapor Barrier. CAV-GRIP can also be used as a primer for unexposed asphalt.

Coverage Rate: 50-55 square feet per lb, 2,000-2,500 square feet per cylinder.

Packaging: 40-lb aerosol cylinder

Product Number: 305432

Shelf Life: 12 months unopened container



COLD-APPLIED ADHESIVE



An asphalt-modified polyether, one-sided, wet lay-in adhesive designed to adhere to VersiFleece AC membranes and Versico's modified base sheet.

Coverage Rate: 67 square feet per gallon for smooth surfaces. 50 square feet per gallon for uneven surfaces.

Packaging: 5-gal pail

Product Number: 319689

Shelf Life: 9 months when stored below 90°F



V-150 EPDM PRIMER



A solvent-based product designed for one-step surface priming of Versico's EPDM membrane prior to the application of QA Seam Tape and all other QA products.

Coverage Rate: As high as 450 square feet per gallon with clean EPDM membrane. Approx. 250 square feet per gallon with standard membrane.

Packaging: (6) 1-gal cans

Product Number: 302081

Shelf Life: 9 months



TPO PRIMER



A high-solids, clear polymer-based primer used to prepare TPO membrane prior to the application of TPO pressure-sensitive products.

Coverage Rate: 200 – 250 square feet (one surface) per gallon.

Packaging: (6) 1-gal cans

Product Number: 310471

Shelf Life: 12 months unopened can





Adhesives & Sealants

LOW-VOC PRIMER



Designed for one-step priming of EPDM and TPO surfaces prior to the application of pressure-sensitive products. It is a Low-VOC product that is ideal for use where environmental issues are a concern.

Coverage Rate: As high as 700 square feet per gallon with TPO or Kleen EPDM membrane. Approx. 250 square feet per gallon with dusted EPDM membrane.

Packaging: (6) 1-gal cans

Product Number: 316522

Shelf Life: 9 months



WEATHERED MEMBRANE CLEANER



Used to clean both new and in-service VersiGard EPDM membrane and VersiWeld TPO membrane prior to the welding process. It helps to loosen and remove dirt and other contaminants from the surface of the membranes and leaves a suitable surface for application of adhesive or primer. Please refer to the Technical Data Bulletins for specific instructions for EPDM and TPO applications. Membrane cleaner is clear in color.

Coverage Rate: 400 square feet (one surface) per gallon.

Packaging:

(2) 1-gal closed-top cans, 5-gal closed-top pail

1-gal cans

Product Number: 304066

5-gal pail

Product Number: 302074



* Not Compliant in all CA counties

PVC MEMBRANE CLEANER



This cleaner is specially formulated to clean both new and in-service VersiFlex PVC membrane.

Coverage Rate: 400 square feet (one surface) per gallon.

Packaging: 5-gal closed-top pail

Product Number: 308352



CCW-702 AND CCW-702LV PRIMERS



Solvent-based, high-tack adhesives specifically designed to promote maximum adhesion of Versico Air and Vapor Barrier to approved substrates. They are also used as a surface prep to promote adhesion with DASH Adhesive.

Coverage Rate: 300-350 square feet per gallon.

Packaging: 5-gal pails

CCW-702

Product Number: 305363

CCW-702LV

Product Number: 316148

Shelf Life: 12 months unopened pail



* CCW-702LV only – not Compliant in all CA counties

WATER CUT-OFF MASTIC



A one-component, low-viscosity, self-wetting, butyl-blend mastic designed to be used in conjunction with roofing and waterproofing systems. It is primarily used as a sealing agent between various membranes and applicable when membrane is being terminated using a compression-type seal. Water Cut-Off Mastic is an extremely tacky material and will remain as such when used with compression type terminations. Mastic is gray in color.

Coverage Rate: 10' per tube, using a 7/16" bead.

Packaging: 25 Tubes/carton

Product Number: 302202

Shelf Life: 12 months unopened container





Adhesives & Sealants

G300 BLACK & WHITE LAP SEALANTS



The consistency enables it to expand and contract with membrane movement without loss of adhesion. Lap Sealants may be used to seal mechanical terminations, the cut edges of VersiGard Reinforced EPDM membranes and for sealing at splice intersections. Lap Sealant must be applied and feathered on all seam edges by the end of the working day.

Coverage Rate: 22' per tube using a 5/16" bead.

Packaging: 25 tubes/carton

Product Number: 302189 – Black; 309819 – White

Shelf Life: 12 months



UNIVERSAL SINGLE-PLY SEALANT



A 100%-solids, solvent-free, one-part, polyether sealant that provides a weathertight seal to a variety of building substrates. Universal Single-Ply Sealant can be used as a termination bar sealant for VersiWeld, VersiFlex and VersiGard white adhered and mechanically attached roofing systems. It is also an excellent product for use in counter flashing, coping and scupper details. Universal Single-Ply Sealant has excellent adhesion to substrates such as stone, masonry, ceramic, marble, wood, steel, aluminum, Kynar®-coated metal, most plastics and composites. Universal Single-Ply Sealant is not recommended as a glass glazing sealant.

Coverage Rate: 25' per tube or 600' per carton using a 1/4" bead.

Packaging: 25 Tubes/carton

Product Number: 310131

Shelf Life: 12 months unopened container (@ <90°F)



CUT EDGE SEALANT



TPO CUT EDGE SEALANT

A free-flowing polymeric material designed for sealing cut edges (exposed fabric) of VersiWeld TPO membrane. Cut Edge Sealant is clear in color.

Coverage Rate: 225'-275' per 16-oz. bottle when applied with 1/8" bead.

Packaging: (8) 16-oz. bottles/carton

Product Number: 303436

Shelf Life: 12 months



PVC CUT EDGE SEALANT

Also Available (Not shown)

PVC Cut Edge Sealant is used for sealing cut edges (exposed fabric) of VersiFlex PVC Membrane. Cut Edge Sealant is clear in color.

Coverage Rate: 225'-275' per bottle when applied with 1/8" bead.

Packaging: (12) 16-oz. bottles/carton

Product Number: 307754

Shelf life: 12 months



* Not Compliant in all CA counties

SPLICE ADHESIVE



Designed for splicing cured-to-cured EPDM and butyl membranes as well as EPDM uncured flashing. Splicing adhesives are high-strength, solvent-based contact cements which allow quick bonding of flashing, sheeting and cured rubber seams. They are synthetic rubber adhesives formulated specifically for application with a 1/2" medium nap roller and/or a 1/2"-thick paint brush with enough versatility in the tack time of the film to allow large areas to be coated and adhered at one time.

Coverage Rate: 100 square feet per gallon.

Packaging: (6) 1-gal cans – Black and White

Product Number: 309550 – Black; 302147 – White

Shelf Life: 12 months – Black; 9 months – White



BLACK ONE-PART POURABLE SEALER



A single-component, moisture-curing, elastomeric polyether sealant that is compatible with Versico's EPDM membranes. It is designed to provide a flexible, durable and long-lasting seal around hard-to-flash penetrations. The sealant's consistency allows for quick pocket filling without mixing. Unused sealant is usable for up to 30 days if pouch is resealed with original cap. Black one-part pourable sealer is black in color.

Coverage Rate: 122 cubic inches of volume per 1/2-gal pouch.

Packaging: (4) 1/2-gal pouches per bucket

Product Number: 307647

Shelf Life: 12 months unopened container



WHITE ONE-PART POURABLE SEALER



A single-component, moisture-curing, elastomeric polyether sealant that is compatible with Versico's white EPDM, TPO and PVC membranes. It is designed to provide a flexible, durable and long-lasting seal around hard-to-flash penetrations. The sealant's consistency allows for quick pocket filling without mixing. Unused sealant is usable for up to 30 days if pouch is resealed with original cap. White one-part pourable sealer is white in color.

Coverage Rate: 122 cubic inches of volume per 1/2-gal pouch.

Packaging: (4) 1/2-gal pouches per bucket

Product Number: 307603

Shelf Life: 18 months





Insulation

MP-H POLYISO

A rigid-roof insulation panel composed of a closed-cell polyisocyanurate foam core bonded on each side to fiber-reinforced facers.

Sizes: 4' x 4' and 4' x 8'

Thickness: 1" to 4.5"

* Also available in 25 PSI, Grade 3.

** Manufactured in both flat and tapered panels.



SECURSHIELD™

A rigid roof insulation panel composed of a closed-cell polyisocyanurate foam core laminated to high-performance coated glass fiber-mat facers.

Sizes: 4' x 4' and 4' x 8'

Thickness: 1" to 4.5"

* Also available in 25 PSI, Grade 3.

** Manufactured in both flat and tapered panels.

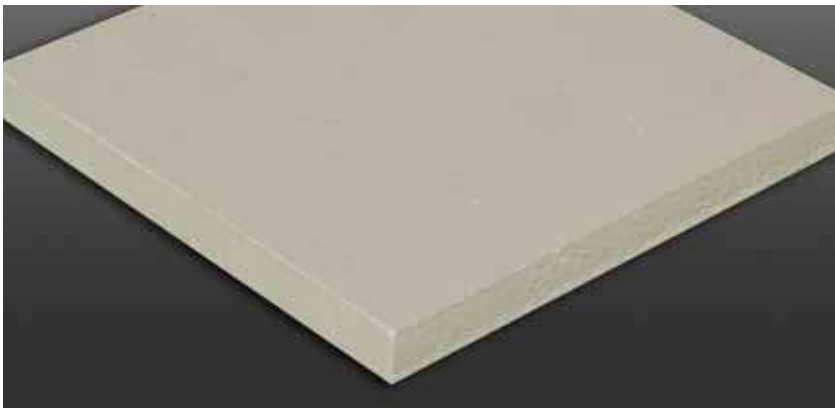


SECURSHIELD HD

A rigid, roof insulation panel composed of a high-density, closed-cell polyisocyanurate foam core laminated to a premium-performance, coated-glass fiber-mat facer specifically designed for use as a cover board.

Sizes: 4' x 8'

Thickness: ½"



SECURSHIELD HD COMPOSITE

A unique composite insulation panel comprised of 0.5" high-density 100 psi polyiso cover board laminated during the manufacturing process to SecurShield rigid polyiso roof insulation.

Sizes: 4' x 4' and 4' x 8'

Thickness: 2" to 4.5"





Insulation

MB-HNB POLYISO

A rigid roof insulation composite panel composed of closed-cell polyisocyanurate foam core bonded to a fiber-reinforced facer on one side and either $7/16$ " or $5/8$ " oriented strand board (OSB) on the other. $5/8$ " and $3/4$ " plywood, as well as FSC Certified OSB and plywood options are also available.

Sizes: 4' x 8'

Thickness: 1" to 4.5"



SECURSHIELD CD

A rigid roof insulation panel composed of a closed-cell polyisocyanurate foam core bonded to enhanced high performance coated glass facers providing a UL Class A fire rating at only 1" on combustible decks.

Sizes: 4' x 4' and 4' x 8'

Thickness: 1"

Compressive Strength: 20 and 25psi



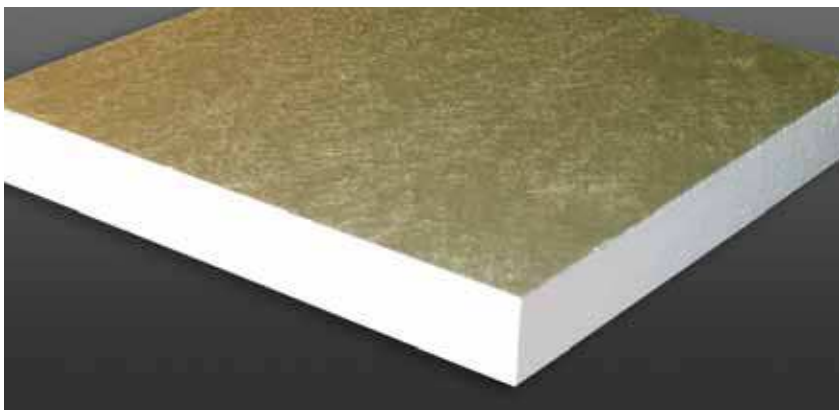
INSULFOAM® SP EPS

Premium coated glass-faced insulation approved for mechanically-attached or self-adhering systems without a slip sheet. Warranted long-term R-value providing up to R30 in a single layer.

Sizes: 4' x 4' or 4' x 8'; custom sizes and taper panels available

Thickness: $1/4$ " to 6"

Densities: 1.25 to 3 lb/ft³



INSULFOAM EPS FLUTE-FILL

Custom cut, engineered EPS flute-fill insulation manufactured for virtually any standing seam profile. Meets ASTM C578 requirements and includes extensive UL and FM ratings, including installations direct to metal deck.

Thickness, Shape and Size: Custom manufactured to fit any roof profile





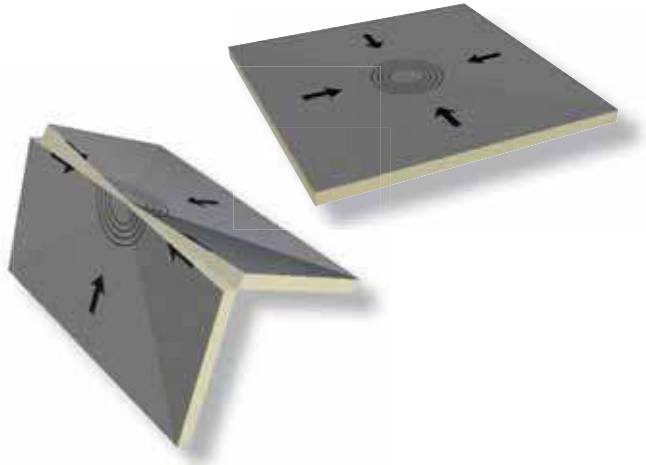
Insulation

HINGED TARGET SUMP™

A factory-assembled, one-piece drainage sump that helps reduce field labor and eliminate waste. The Hinged Target Sump ships in 4' x 8' pallets and unfolds to a complete 8' x 8' sump. It is manufactured in multiple thicknesses and slopes to accommodate specific job conditions, and is available with standard MP-H or SecurShield facers in 20 or 25 psi.

Sizes: 4' x 8' and folds out to 8' x 8'

Available Slopes: 1/16", 3/16", 3/8", 1/8", 1/4" and 1/2"

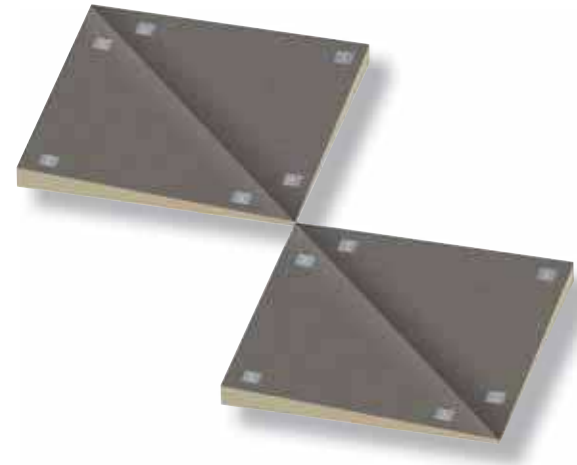


PRE-CUT HIPS AND VALLEYS

Factory produced using two 4' x 4' panels of Tapered MP, or Tapered SecurShield, and then cut in half at a 45-degree angle. Only the two halves that you need are shipped.

Sizes: 4' x 4'

Available Slopes: 1/16", 3/16", 3/8", 1/8", 1/4" and 1/2"



INSULFOAM EPS

Engineered rigid insulation consisting of high-performance, water-resistant expanded polystyrene (EPS). Meets ASTM C578 requirements, includes extensive UL and FM ratings and can be applied direct to the metal deck. Warranted long-term R-value of up to 5.05/inch @40°F.

Sizes: 4' x 4' or 4' x 8'; custom sizes available

Thickness: 1/4" to 40" per panel

Densities: 1 to 3 lb/ft³



INSULFOAM EPS (40/60 PSI)

High compressive-strength engineered EPS. Ideal for plaza decks, garden or vegetative roofs, IRMA and high traffic areas that require additional strength and water-resistance. Available in thicknesses up to 40" in a single layer.

Sizes: 4' x 4' or 4' x 8'; custom sizes and taper panels available

Thickness: 1/4" to 40" per panel

Compressive Strength: 40 and 60 psi





Insulation

INSULFOAM EPS TAPER

Tapered engineered EPS insulation available in virtually any slope, with panels up to 40" in a single layer. Can be combined with Versico polyiso for tapered hybrid roof systems. Custom saddles and crickets also available.

Slope: Virtually any slope

Thickness: 1/2" to 40"

Densities: 1 to 3 lb/ft³



R-TECH® FANFOLD RECOVER BOARD

A high-performance, rigid insulation consisting of a superior closed-cell, lightweight and resilient expanded polystyrene (EPS) with advanced polymeric laminate facers. R-Tech is available with factory-adhered metallic-reflective facers and white facers. R-Tech Fanfold Recover Board is an ENERGY STAR®-qualified insulation and can contribute toward LEED® certification credits.

Sizes: 2 square bundles (2' x 4' folded/4' x 50' unfolded)

Thickness: 3/8", 1/2", 3/4"



SECURSHIELD HD EPS COMPOSITE

A premium composite insulation consisting of a closed-cell, lightweight and resilient expanded polystyrene (EPS) bonded to high-density polyisocyanurate cover board. The polyisocyanurate cover board is manufactured at 1/2" thickness and 100 psi compressive strength. The EPS is available in compressive strengths from 10 - 60 psi and densities from 1 - 3 pcf.

Sizes: 4' x 4' and 4' x 8'

Thickness: 1.5" to 7"

* Manufactured in flat and tapered panels.

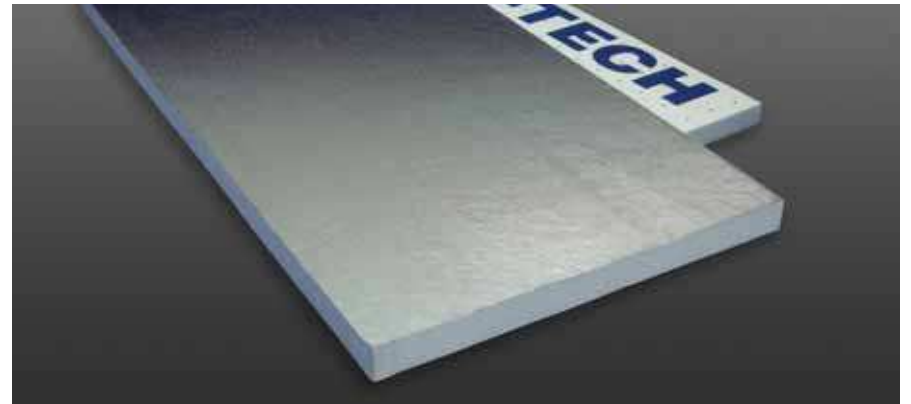


R-TECH

A high-performance rigid insulation consisting of a superior closed-cell, lightweight and resilient expanded polystyrene (EPS) with advanced polymeric laminate facers. R-Tech comes with a factory-adhered white facer and a metallic-reflective facer. R-Tech has excellent dimensional stability, compressive strength and water-resistant properties. R-Tech is an ENERGY STAR®-qualified insulation and can contribute towards LEED certification credits.

Sizes: 4' x 4' and 4' x 8'

Thickness: 3/8" to 1"





Quick Reference Guide

EPDM Systems	BALLASTED	FULLY ADHERED	MECHANICALLY ATTACHED REINFORCED	MECHANICALLY ATTACHED NON-REINFORCED	COVERAGE RATE OR AVAILABLE SIZES	PACKAGING
MEMBRANES						
VersiGard Black Non-Reinforced 45-, 60- & 90-mil EPDM	✓	✓				4.5-50' x 50-200' per roll
VersiGard White Non-Reinforced 60-mil White EPDM		✓				10'-30' x 50-100' per roll
VersiGard Reinforced 45-, 60- & 75-mil EPDM	✓	✓	✓			4.5-10' x 50-100' per roll
VersiGard w/Quick-Applied Tape (QAT)	✓	✓	✓	✓	Various sizes and thicknesses	Single packs or 2 packs
ADHESIVES & SEALANTS						
Low-VOC Primer	✓	✓	✓	✓	400 sq. ft per gallon (dusty membrane) Up to 700 sq. ft per gallon (no-dust membrane)	(6) 1 gallon cans per case
V-150 Primer	✓	✓	✓	✓	3" seam=300 linear feet per gallon	(6) 1 gallon cans per case
G200SA Yellow Substrate Adhesive		✓	✓		60 sq. ft per gallon	5 gallon pail
Solvent-Free EPDM Bonding Adhesive		Non-reinforced only ✓			100 sq. ft per gallon	5 gallon pail
Aqua Base 120 Bonding Adhesive		✓			100-120 sq. ft. per gallon	5 gallon pail
Low-VOC Bonding Adhesive		✓			60 sq. ft. per gallon	5 gallon pail
G300LS Black Lap Sealant	✓	✓	✓	✓	22' per tube	25 tubes per carton
White Lap Sealant	✓	✓	✓	✓	22' per tube	25 tubes per carton
One-Part Pourable Sealer (Black/White)	✓	✓	✓	✓	231 cubic inches per gallon	(2) 1 gallon cans per case
DASH Dual Cartridge Adhesive		✓	✓	✓	600 sq. ft. (12" O.C.), 300 sq. ft. (6" O.C.), 200 sq. ft. (4" O.C.)	4 sets per carton
Weathered Membrane Cleaner	✓	✓	✓	✓	400 sq. ft. per gallon	1 gallon or 5 gallon pail
Water Cut-Off Mastic	✓	✓	✓	✓	10' per tube	10 tubes per carton
Quick-Applied Seam Tape	✓	✓	✓	✓	3" x 100', 6" x 100'	4 rolls per carton, 2 rolls per carton
FLASHINGS						
Quick-Applied Uncured EPDM Flashing (Black/White)	✓	✓	✓	✓	6" x 100', 9" & 12" x 50'	6" - 2 rolls per carton 9" & 12" - 1 roll per carton
Quick-Applied Cured Coverstrip (Black/White)	✓	✓	✓	✓	6" x 100', 9" x 100' & 12" x 50'	6" - 2 rolls per carton 9" & 12" - 1 roll per carton
Quick-Applied Overlayment Strip (Black)	✓	✓	✓	✓	6" x 100', 9" x 10" & 12" x 50'	6" - 2 rolls per carton 9" & 12" - 1 roll per carton
Quick-Applied RTS (Black)	✓	✓	✓	✓	6, 9" x 100'	6" - 2 rolls per carton 9" - 1 roll per carton
Quick-Applied Pipe Seals (Black/White)	✓	✓	✓	✓	1" - 3" & 1" - 6" pipes	10 per carton
Quick-Applied Pourable Sealer Pockets (Black/White)	✓	✓	✓	✓	4", 6" & 8"	12 per carton
Quick-Applied Inside/Outside Corners (Black/White)	✓	✓	✓	✓	7" x 9"	20 per carton
Quick-Applied Curb Flashing (Black/White)	✓	✓	✓	✓	20" x 50", with 5" tape	1 roll per carton
Fully Quick Applied Curb Flashing (Black)	✓	✓	✓	✓	20" x 50'	1 roll per carton
Quick-Applied T-Joint Covers (Black)	✓	✓	✓	✓	6" and 12"	20 per carton
Pipe Supports	✓	✓	✓	✓	Mini: ½" - 1½", Small: ¾" - 2", Large: 2½" - 5"	Mini & small - 20 per carton Large - 10 per carton



Quick Reference Guide

EPDM Systems	BALLASTED	FULLY ADHERED	MECHANICALLY ATTACHED REINFORCED	MECHANICALLY ATTACHED NON-REINFORCED	COVERAGE RATE OR AVAILABLE SIZES	PACKAGING
ACCESSORIES						
Quick-Applied Molded Walkway Pads (Black/White)					30' x 30'	50/pallet
Interlocking Rubber Pavers (Black, TerraCotta)					24" x 24"	Single Paver
HP Protective Mat					15' x 300'	Per roll
EPDM Expansion Joint-Edge (Deck to Wall)					25 ft.	25 LF per carton
EPDM Expansion Joint-Field					25 ft.	25 LF per carton
FASTENERS AND PLATES						
HPV Fasteners (EPDM Membrane or Insulation)					1 ¼" to 15"	250-1000 per package
HPV ASAP w/2" Polymer Plate (Membrane Attachment)					2" to 12"	200-500 per package
2" Metal Membrane Plate (Flat Bottom - Membrane)					2" diameter	1000 per package
Polymer Seam Plate					2" diameter	1000 per package
2" Metal Seam Fastening Plate					2" diameter	1000 per package
3" Plastic Insulation Plate					2 7/8" diameter	1000 per package
MP 14-10 (Structural Concrete)					1 ¼" to 14"	250-1000 per package
InsulTite Insulation Fasteners (Insulation)					1 5/8" to 8"	1000 per package
InsulTite ASAP Insulation Fasteners					2 ¼" to 8"	250 per package
3" Steel Insulation Plate					3" in diameter	1000 per package
GypTec Fastener (Gypsum, Cementitious, Wood Fiber)					2 ½" to 10"	250-500 per package
GypTec Plate (Gypsum, Cementitious, Wood Fiber)					2" - membrane 3" - insulation	1000 per package
Accutrack Fastener/Plate Kit (Insulation)					1 5/8" to 6"	1000 per package
Purlin Fastener (Membrane Attachment, Metal Retrofit Systems)					3" to 7 ¼"	500 per package
CD-10 (Concrete)					2" to 12"	250-500 per package
Lite Deck Fastener (Insulation Attachment)					2 5/8" to 12"	125-500 per package
Galvalume batten 6" O.C.					10' Bar	50 pieces
Galvalume batten 12" O.C.					10' Bar	50 pieces
1 ¼" Term Bar Nail In					1 ¼"	1000 per package
Termination Bar (Aluminum)					1" wide x .050 thick x 10' long	500 LF



Quick Reference Guide

VersiWeld TPO Systems	MECHANICALLY ATTACHED	FULLY ADHERED	VERSIFLEECE	VERSIFLEECE AC	COVERAGE RATE OR AVAILABLE SIZES	PACKAGING
TPO Membranes						
VersiWeld 45-, 60- & 80-mil						4' to 12' x 100' roll
TPO Adhesives and Sealants						
VersiWeld Bonding Adhesive					60 sq. ft. per gallon	5 gallon pail
Aqua Base 120 Bonding Adhesive					100-120 sq. ft. per gallon	5 gallon pail
DASH/FAST Adhesive					See PDS	Multiple
Low-VOC Bonding Adhesive					60 sq. ft. per gallon	5 gallon pail
Weathered Membrane Cleaner					400 sq. ft. per gallon	1 gallon or 5 gallon pail
Cold Applied Adhesive					50-67 sq. ft. per gallon	5 gallon pail
White One-Part Sealant					122 cubic inches per ½ gallon	(4) ½ gallon pouches/bucket
TPO Primer (Standard and Low-VOC)					200 to 250 sq. ft. per gallon	(6) 1 gallon cans/carton
TPO Clear Cut Edge Sealant					225 linear ft. per bottle	6 bottles per carton
Universal Single-Ply Sealant					25 ft. per tube (½" bead)	24 tubes, 10.1 fl. oz. each
TPO Flashings						
TPO Molded Pipe Seals (White, Gray & Tan)					¾" to 8"	8 per carton
TPO PS Coverstrip 6" x 100' (White, Gray & Tan)					6" x 100'	2 rolls per carton
TPO Non-Reinforced Flashing (White, Gray & Tan)					12" x 50' and 24" x 50'	1 per carton
TPO Split Pipe Seals (White)					1" to 6"	8 per box
TPO Square Tubing Wraps (White)					3", 4", 5", 6"	8 per box
TPO Inside/Outside Corner (White, Gray & Tan)						12 per bag
TPO Inside Corners (White, Gray & Tan)						12 per bag
TPO Outside Corners (White)						12 per bag
TPO Curb Wrap Corners (White)					7", 13", 19"	12 per box
TPO Molded Sealant Pockets (White, Gray & Tan)					7.5" to 11" x 6" oval	5 per carton
TPO Sealant Pocket Extensions					14" overall length; 10" installed length	10 per carton
6" TPO PS RUSS					6" x 100'	2 rolls
10" TPO PS RUSS					10" x 100'	1 roll
TPO T-Joint Covers (White, Gray & Tan)					4 ½" diameter	100 per box
Accessories						
TPO Walkway Rolls (White, Gray & Tan)					34" x 50' roll	Per roll
TPO Coated Metal 4' x 10' (White, Gray & Tan)					4' x 10'	10 or 25 per skid



Quick Reference Guide

VersiWeld TPO or VersiFlex PVC Systems	MECHANICALLY ATTACHED	FULLY ADHERED	VERSIFLEECE	VERSIFLEECE AC	COVERAGE RATE OR AVAILABLE SIZES	PACKAGING
TPO or PVC Fasteners						
InsulTite Insulation Fasteners					1 5/8" to 8"	1000 per package
3" Steel Insulation Plate					3" in diameter	1000 per package
HPV Fasteners (Insulation)					1 1/4" to 15"	250-1000 per package
HPVX Fasteners (Membrane)					2" to 22"	250-1000 per package
HPVX ASAP Fasteners (Membrane)					2" to 16"	150-250 per package
HPVX Plates					2 3/8"	1000 per package
HPV-XL Fasteners (Steel Deck Only)					2" to 12"	250-500 per bucket
TPO RhinoBond Plates					3" diameter	500 per package
PVC RhinoBond Plates					3" diameter	500 per package
Miscellaneous Accessories						
Termination Bar (Aluminum)					1" wide x .050 thick x 10' long	500 LF
1 1/4" Term Bar Nail In					1 1/4"	1000 per package

VersiFlex PVC Systems	MECHANICALLY ATTACHED	FULLY ADHERED	VERSIFLEECE	COVERAGE RATE OR AVAILABLE SIZES	PACKAGING
PVC Membranes					
VersiFlex 50, 60 & 80-mil			 60- and 80-mil only		See TDB
VersiFlex-E PVC KEE 50, 60 & 80-mil					See TDB
PVC Flashings					
PVC Flashing (White/Gray & White/Tan)				12", 24" x 50'	1 per carton
PVC T-Joint Covers (White/Tan/Gray)				4 1/2" diameter	100 per box
PVC Inside Corners (White/Gray)					12 per bag
PVC Outside Corners (White/Gray)					12 per bag
PVC Molded Sealant Pockets (White)				7 1/2" x 6"	5 per carton
PVC Molded Pipe Seals (White)				3/4" to 8" diameter pipe	8 per box
PVC Split Pipe Seals (White)				1" to 6" diameter pipe	8 per box
PVC Square Tubing Wraps (White)				3", 4", 6"	8 per box
PVC Adhesives and Sealants					
Low-VOC PVC Bonding Adhesive				60 sq. ft. per gallon	5 gallon pail
HydroBond Bonding Adhesive				100-200 sq. ft. per gallon	5 gallon pail
DASH/FAST Adhesive				See TDB	See TDB
White One-Part Sealant				122 cubic inches per 1/2 gallon	(4) 1/2 gallon pouches/ bucket
PVC Cut-Edge Sealant				225' to 275' (1/8" bead)	(12) 16 oz. bottles/carton
PVC Membrane Cleaner				400 sq. ft. per gallon	5 gallon pail
PVC Coated Metal & Walkway					
White PVC Coated Metal				4' x 10" sheet	10 sheet/pallet
PVC Walkway Rolls (Gray)				36" x 60' (91.4 cm x 18.3 m)	Per roll
PVC Preformed Flashings					
PVC Molded Pipe Flashings (White)				1" to 6"	8 per carton
PVC Split Pipe Seals (White)				1" to 6"	8 per carton
PVC Split Square Tubing Wraps (White)				3" to 6"	8 per carton
PVC Fasteners - See Above					



A SINGLE SOURCE FOR SINGLE-PLY ROOFING

Versico, PO Box 1289, Carlisle, PA 17013
Tel: **800.992.7663** Fax: 717.960.4036 Web: **www.versico.com**