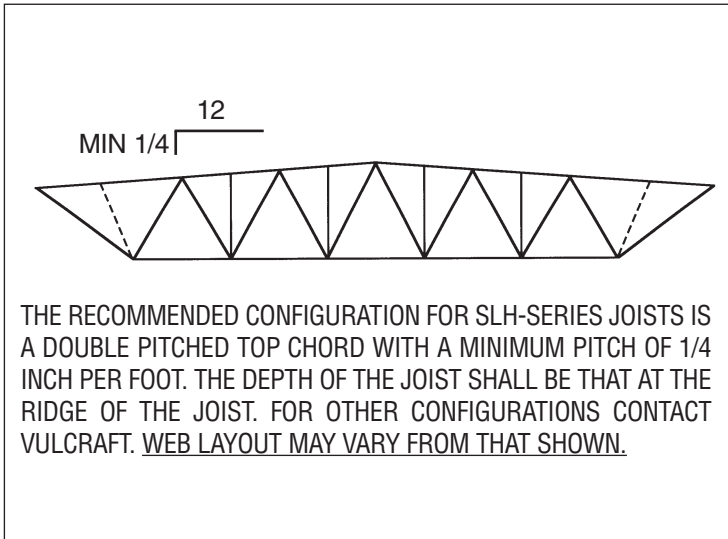


**ACCESSORIES AND DETAILS
SLH SERIES LONGSPAN STEEL JOISTS.**

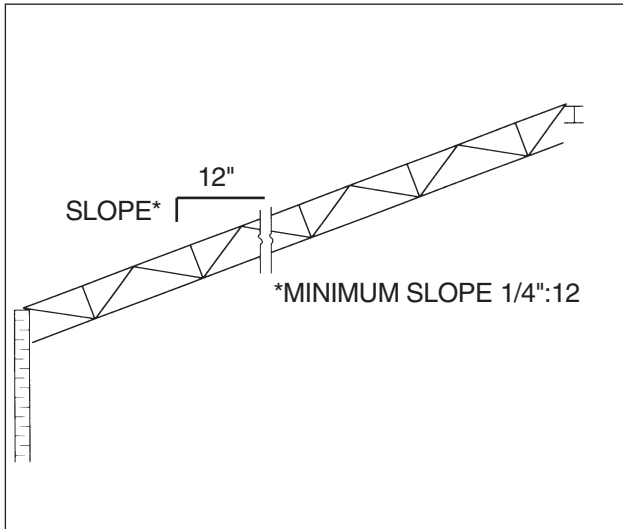


SLH-SERIES CAMBER*		
TOP CHORD LENGTH	DOUBLE PITCH JOISTS**	PARALLEL CHORD JOISTS
111'-0"	3 1/4"	5 1/4"
120'-0"	3 1/2"	6"
130'-0"	3 7/8"	7"
140'-0"	4 1/8"	8"
150'-0"	4 3/8"	8 3/4"
160'-0"	4 3/4"	9 1/2"
180'-0"	5 1/4"	10 1/2"
200'-0"	5 7/8"	11 3/4"
220'-0"	6 1/2"	13"
240'-0"	7"	14"

**JOISTS WITH TOP CHORD PITCH OF 1/4" PER FOOT OR GREATER.

*For walls or other structural members near SLH-Series Joists provisions need to be made to match top chord elevation.

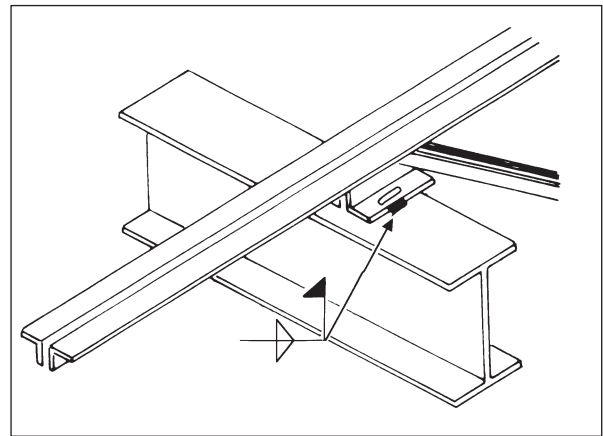
Specifying professional must provide camber requirements in inches if camber is different from that shown.



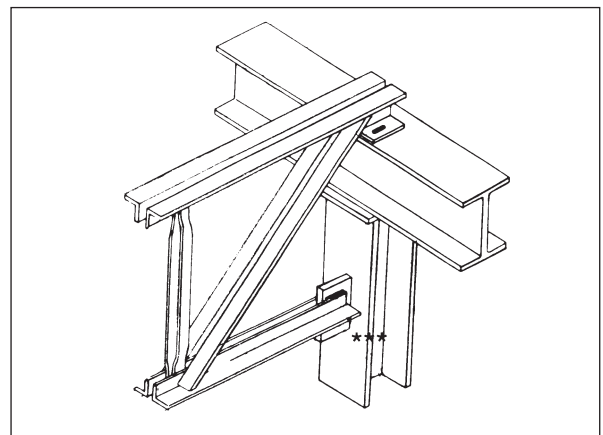
(a) Extend top chords require the special attention of the specifying engineer.

The magnitude and location of the design loads to be supported, the deflection requirements, and the proper bracing shall be clearly indicated on the structural drawings.

NOTE:
FOR ANY CONCENTRATED LOADS SUCH AS BASKETBALL GOALS, CURTAINS, SCORE BOARDS, HVAC UNITS, ETC. IT IS ESSENTIAL THAT THE SPECIFYING ENGINEER PROVIDE THE MAGNITUDE AND LOCATION OF ALL LOADS ON THE STRUCTURAL DRAWINGS.



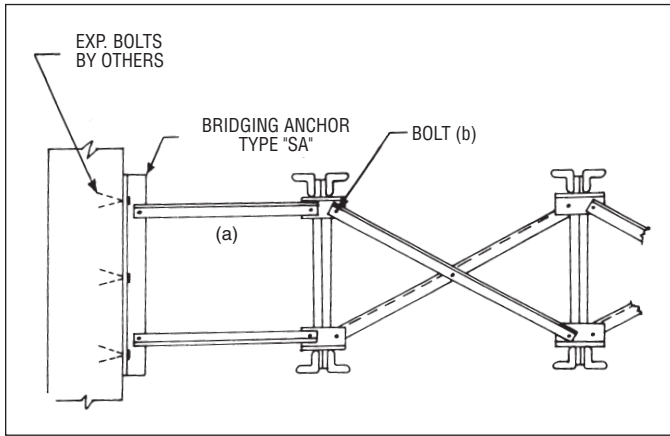
TOP CHORD EXTENSION (a)
SEE TABLE 204.8.1



BOTTOM CHORD STRUT
(SEE SPECIFICATION 204.1)

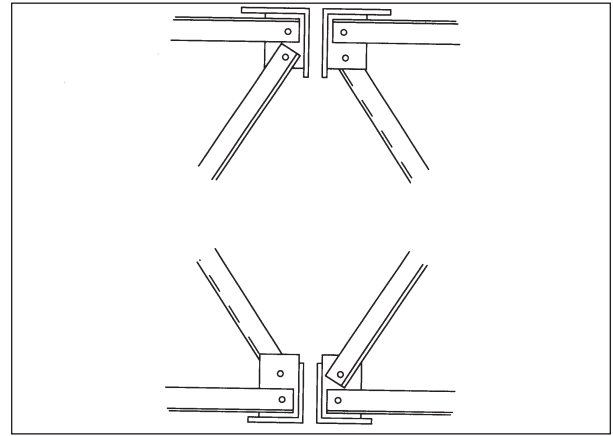
*** If bottom chord is to be bolted or welded the specifying professional must provide axial loads on structural drawings.

**ACCESSORIES AND DETAILS
SLH SERIES LONGSPAN STEEL JOISTS**



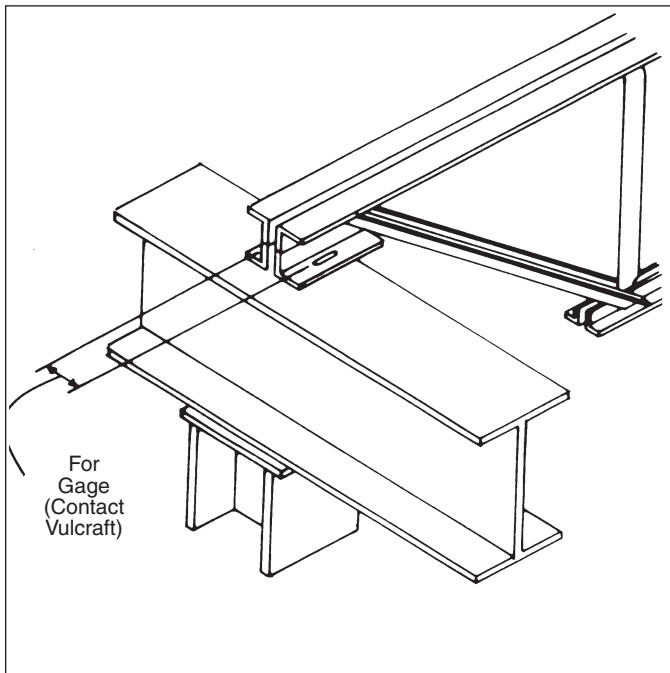
CROSS BRIDGING

A) HORIZONTAL BRIDGING IS TO BE USED IN THE SPACE ADJACENT TO THE WALL TO ALLOW FOR PROPER DEFLECTION OF THE JOIST NEAREST THE WALL. SEE TABLES 1 AND 3 PAGE 73.
B) FOR REQUIRED BOLT SIZE REFER TO BRIDGING TABLE ON PAGE 73. NOTE: CLIP CONFIGURATION MAY VARY FROM THAT SHOWN.



BOLTED, HORIZONTAL PLUS DIAGONAL, BRIDGING

SEE TABLE 3, PAGE 73 AND SPECIFICATION 204.6.
NOTE: CLIP CONFIGURATION MAY VARY FROM THAT SHOWN.
NOTE: DO NOT HANG ANY MECHANICAL, ELECTRICAL, ETC. FROM BRIDGING.

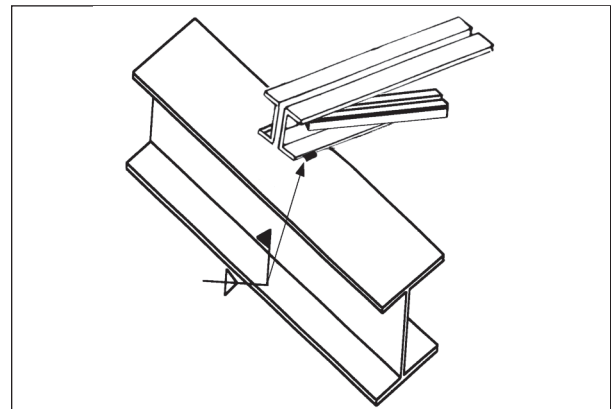


BOLTED CONNECTION (b)

SEE TABLE 2, PAGE 73.
TYPICALLY USED AT COLUMNS

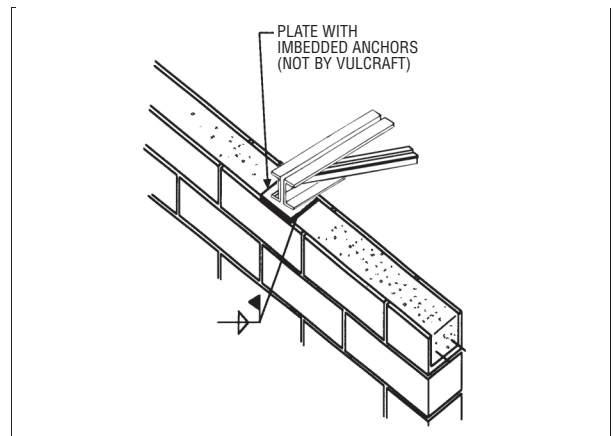
The Occupation Safety and Health Administration Standards (OSHA), Paragraph 1910.12 refers to Paragraph 1518.751 of "Construction Standards" which states:

"In steel framing, where bar joists are utilized, and columns are not framed in at least two directions with structural steel members, a bar joist shall be field-bolted at columns to provide lateral stability during construction."



ANCHORAGE TO STEEL

SEE TABLE 2, PAGE 73.



ANCHORAGE TO MASONRY

SEE SPECIFICATION 204.5 (a)
SEE TABLE 2, PAGE 73.