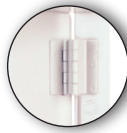


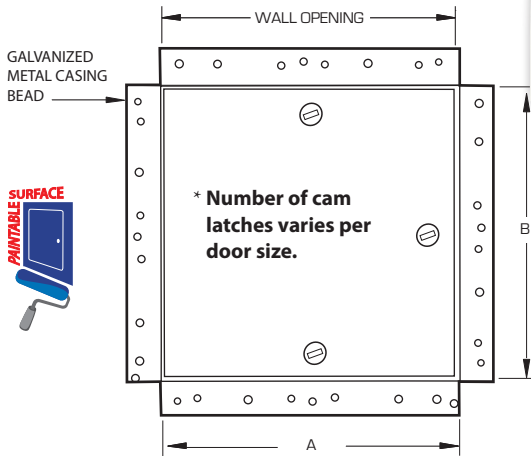
**SUBMITTAL SHEET**

**WALLS & CEILINGS**

Fully concealed offset hinges up to 24 x 24

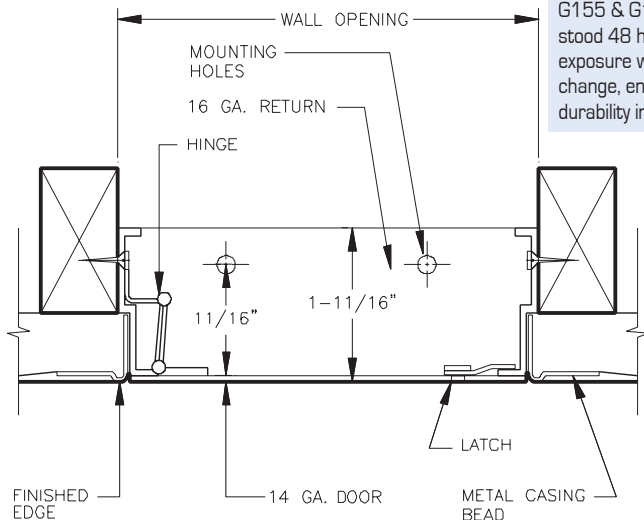


**FRONT ELEVATION**



\* Number of cam latches varies per door size.

**SECTION DETAIL**



**THE WILLIAMS BROTHERS ADVANTAGE**

**Durability:** Taber Abrasion Tested - Withstood 4,550 cycles (ASTM D4060) with a wear index of 91.1 for a durable, long-lasting finish.

**Corrosion Resistance:** Salt Spray Tested - Withstood 48 hours of ASTM B117 exposure with only slight edge rusting, demonstrating excellent resistance to harsh environments.

**UV Resistance:** Tested to ASTM G155 & G154 standards - Withstood 48 hours of continuous UV exposure with negligible visual change, ensuring color stability and finish durability in sunlit environments.



**SPECIFICATIONS:**

**Door:** 14 ga. steel

**Trim:** 16 ga. steel, 1" wide 24 ga. galvanized drywall flange

**Finish:** Primed white baked enamel, **paintable surface**

**Latches:** Flush, stainless steel cam latches. See sizes below for the number of latches per door.

**Hinge:** Concealed offset hinge on sizes up to and including 24 x 24. Semi-concealed hinge on sizes over 24 x 24

**OPTIONS (at additional cost)**

Stainless Steel Type 304 No. 4 Satin Finish Brushed

Stainless Steel Type 316 No. 4 Satin Finish Brushed

**Options:** (additional cost)

WB Cylinder lock, 2 keys per door, keyed alike

Mortise Best Lock and locks by others

Weather resistive neoprene gasket all 3 sides [Closed cell sponge, blend of Neoprene/EPDM/SBR. Meets ASTM D-1056: SCE 41, RE 41, 2A1; substrate UL 94HF-1 recognized]

Special sizes available

Model No.	Door Size W x H	Wall Opening	Cam* Latches	Ship Wt. Lbs.
DW 400	6 x 6	6 1/4 x 6 1/4	1	4
DW 400	8 x 8	8 1/4 x 8 1/4	1	5
DW 400	10 x 10	10 1/4 x 10 1/4	3	6
DW 400	12 x 12	12 1/4 x 12 1/4	3	8
DW 400	12 x 24	12 1/4 x 24 1/4	4	15
DW 400	14 x 14	14 1/4 x 14 1/4	3	10
DW 400	16 x 16	16 1/4 x 16 1/4	3	13
DW 400	18 x 18	18 1/4 x 18 1/4	3	14
DW 400	18 x 36	18 1/4 x 36 1/4	5	29
DW 400	20 x 30	20 1/4 x 30 1/4	4	23
DW 400	22 x 30	22 1/4 x 30 1/4	4	25
DW 400	22 x 36	22 1/4 x 36 1/4	5	32
DW 400	24 x 24	24 1/4 x 24 1/4	4	24
DW 400	24 x 30	24 1/4 x 30 1/4	4	27
DW 400	24 x 36	24 1/4 x 36 1/4	5	35
DW 400	24 x 48	24 1/4 x 48 1/4	6	43
DW 400	30 x 30	30 1/4 x 30 1/4	6	32
DW 400	30 x 36	30 1/4 x 36 1/4	6	39
DW 400	36 x 36	36 1/4 x 36 1/4	7	44
DW 400	36 x 48	36 1/4 x 48 1/4	8	57
DW 400	48 x 48	48 1/4 x 48 1/4	12	70

The larger the size, more cams are used for closure.

A quality flush panel door with a tape-in drywall bead flange, eliminates visual distraction created by projecting, surface-mounted units.

1. When a door increases in size, more cams are added for security in the ceiling or wall
2. For requests on clear opening after door installed, please email [info@wbdoors.com](mailto:info@wbdoors.com)
3. All installation holes must be used for proper door functionality and security
4. For custom sizes, please reach out to [info@wbdoors.com](mailto:info@wbdoors.com)
5. Clear opening may be impeded by structural or functional parts on door
6. Drawings of any door can be requested through [info@wbdoors.com](mailto:info@wbdoors.com)

Project: \_\_\_\_\_ Date: \_\_\_\_\_  
 Contractor: \_\_\_\_\_ Architect: \_\_\_\_\_  
 Sizes: \_\_\_\_\_ Quantity: \_\_\_\_\_ App Initials: \_\_\_\_\_

1330 Progress Drive • Front Royal, VA 22630 • Phone: 1-800-255-5515 • [www.wbdoors.com](http://www.wbdoors.com)

**RELATED PRODUCTS**

**WB DWAL 412**  
 Aluminum with Fully Detachable Hatch



The World's Largest Access Door Store.™



BuyOnline  
 WBCA 2025