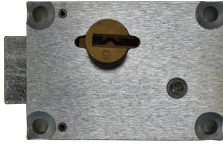


SUBMITTAL SHEET

Prepped for heavy duty detention lock and paracentric key



WB-15

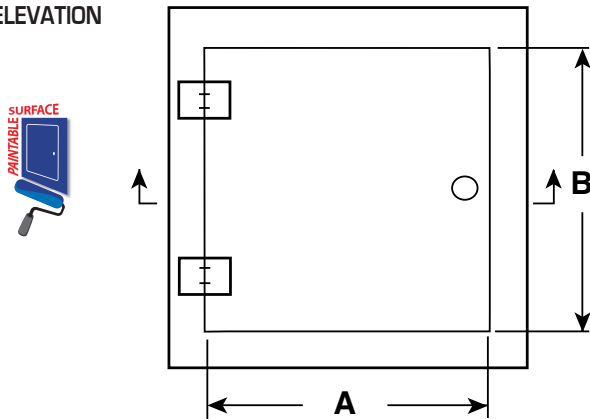


WB-16

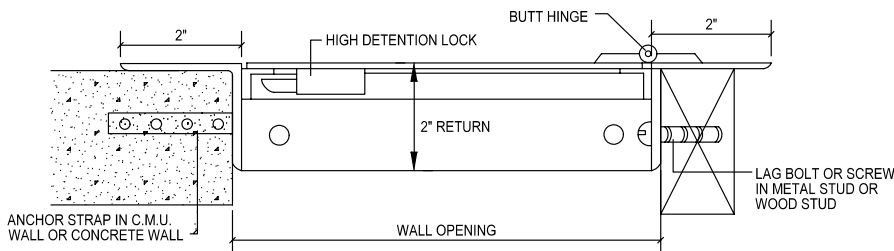
WALLS & CEILINGS



FRONT ELEVATION



SECTION DETAIL



The WB High Security Access Door is designed to be placed where maximum security is of great importance. This door comes prepped for a detention lock which is sold separately.

1. When a door increases in size, more cams are added for security
2. For requests on clear opening after door installed, please email info@wbdoors.com
3. All installation holes must be used for proper door functionality and security
4. For custom sizes, please reach out to info@wbdoors.com
5. Clear opening may be impeded by structural or functional parts on door
6. Drawings of any door can be requested through info@wbdoors.com

SPECIFICATIONS:

Door: 10 ga. steel

Trim: 10 ga. steel with 2" x 2" x 3 1/16" angle

Finish: Primed white baked enamel, **paintable surface**

Hinges: Heavy duty type butt hinges welded to surround and door. Allows opening to 180°

Lock: Prepped for detention lock.

OPTIONS (at additional cost)

- ☐ Stainless Steel Type 304 No. 4 Satin Finish Brushed
- ☐ Stainless Steel Type 316 No. 4 Satin Finish Brushed
- ☐ WB-15 Detention lock and WB-16 Paracentric key
- ☐ Special sizes available
- ☐ _____

✓	Model No.	Door Size W x H	Wall Opening	Ship Wt. Lbs.
	HG SEC 1100	12 x 12	12 3/4 x 12 3/4	46
	HG SEC 1100	16 x 16	16 3/4 x 16 3/4	56
	HG SEC 1100	18 x 18	18 3/4 x 18 3/4	62
	HG SEC 1100	24 x 24	24 3/4 x 24 3/4	82
	HG SEC 1100	24 x 36	24 3/4 x 36 3/4	87
	HG SEC 1100	36 x 36	36 3/4 x 36 3/4	90
	WB-15	Detention Lock		
	WB-16	Paracentric Key		

RELATED PRODUCTS

MD SEC 1000 Series Medium



Project: _____ Date: _____

Contractor: _____ Architect: _____

Sizes: _____ Quantity: _____ App Initials: _____

1330 Progress Drive • Front Royal, VA 22630 • Phone: 1-800-255-5515 • www.wbdoors.com



The World's Largest Access Door Store.™

