

WALLS & CEILINGS

SUBMITTAL SHEET



Fully concealed offset hinges up to 24 x 24



SPECIFICATIONS:

Door: 14 ga. steel

Trim: 16 ga. steel, 3" wide expanded 24 ga. galvanized plaster flange. The space from the expanded flange to the 1/4" safety edge of the door will accommodate 3/4" of plaster

Finish: Primed white baked enamel, paintable surface

Latches: Flush, stainless steel cam latch

Hinge: Concealed offset hinge on sizes up to and including 24 x 24. Semi-concealed hinge on sizes over 24 x 24

OPTIONS (at additional cost)

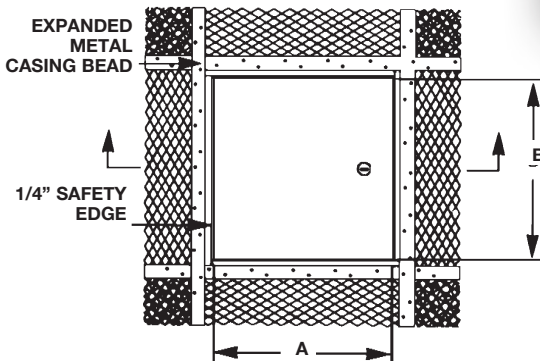
Finishes:

- Stainless Steel Type 304 No. 4 Satin Finish Brushed
- Stainless Steel Type 316 No. 4 Satin Finish Brushed

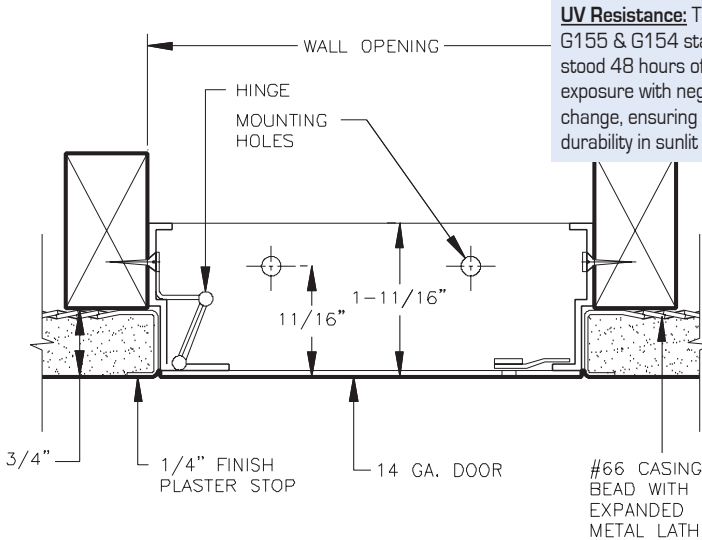
Options: (additional cost)

- WB Cylinder lock, 2 keys per door, keyed alike
- Weather resistive neoprene gasket all 3 sides [Closed cell sponge, blend of Neoprene/EPDM/SBR. Meets ASTM D-1056: SCE 41, RE 41, 2A1; substrate UL 94HF-1 recognized]
- Special sizes available

FRONT ELEVATION



SECTION DETAIL



THE WILLIAMS BROTHERS ADVANTAGE

Durability: Taber Abrasion Tested - Withstood 4,550 cycles (ASTM D4060) with a wear index of 91.1 for a durable, long-lasting finish.

Corrosion Resistance: Salt Spray Tested - Withstood 48 hours of ASTM B117 exposure with only slight edge rusting, demonstrating excellent resistance to harsh environments.

UV Resistance: Tested to ASTM G155 & G154 standards - Withstood 48 hours of continuous UV exposure with negligible visual change, ensuring color stability and finish durability in sunlit environments.



Model No.	Door Size W x H	Wall Opening	Cam Latch	Ship Wt. Lbs.
PL 500	8 x 8	8 1/4 x 8 1/4	1	4
PL 500	10 x 10	10 1/4 x 10 1/4	1	5
PL 500	12 x 12	12 1/4 x 12 1/4	3	7
PL 500	12 x 24	12 1/4 x 24 1/4	2	12
PL 500	14 x 14	14 1/4 x 14 1/4	3	9
PL 500	16 x 16	16 1/4 x 16 1/4	3	11
PL 500	18 x 18	18 1/4 x 18 1/4	3	12
PL 500	20 x 20	20 1/4 x 20 1/4	3	15
PL 500	22 x 22	22 1/4 x 22 1/4	4	18
PL 500	22 x 30	22 1/4 x 30 1/4	4	24
PL 500	22 x 36	22 1/4 x 36 1/4	5	27
PL 500	24 x 24	24 1/4 x 24 1/4	4	20
PL 500	24 x 36	24 1/4 x 36 1/4	5	27
PL 500	24 x 48**	24 1/4 x 48 1/4	6	37
PL 500	30 x 30**	30 1/4 x 30 1/4	5	29
PL 500	30 x 36**	30 1/4 x 36 1/4	5	31
PL 500	36 x 36**	36 1/4 x 36 1/4	7	42

* Available upon request

** Walls only

Designed for all plaster walls and ceilings. The 1/4" safety edge gives the door a strong frame and prevents the plaster from being chipped under normal use.

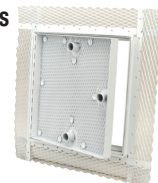
- When a door increases in size, more cams are added for security in the ceiling or wall
- For requests on clear opening after door installed, please email info@wbdoors.com
- All installation holes must be used for proper door functionality and security
- For custom sizes, please reach out to info@wbdoors.com
- Clear opening may be impeded by structural or functional parts on door
- Drawings of any door can be requested through info@wbdoors.com

Project: _____ Date: _____
 Contractor: _____ Architect: _____
 Sizes: _____ Quantity: _____ App Initials: _____

1330 Progress Drive • Front Royal, VA 22630 • Phone: 1-800-255-5515 • www.wbdoors.com

RELATED PRODUCTS

WB AP 510 Series Recessed for Plaster



AWCI ASSOCIATION OF THE WALL AND CEILING INDUSTRY

The World's Largest Access Door Store.™



BuyOnline
 WBCA 2025