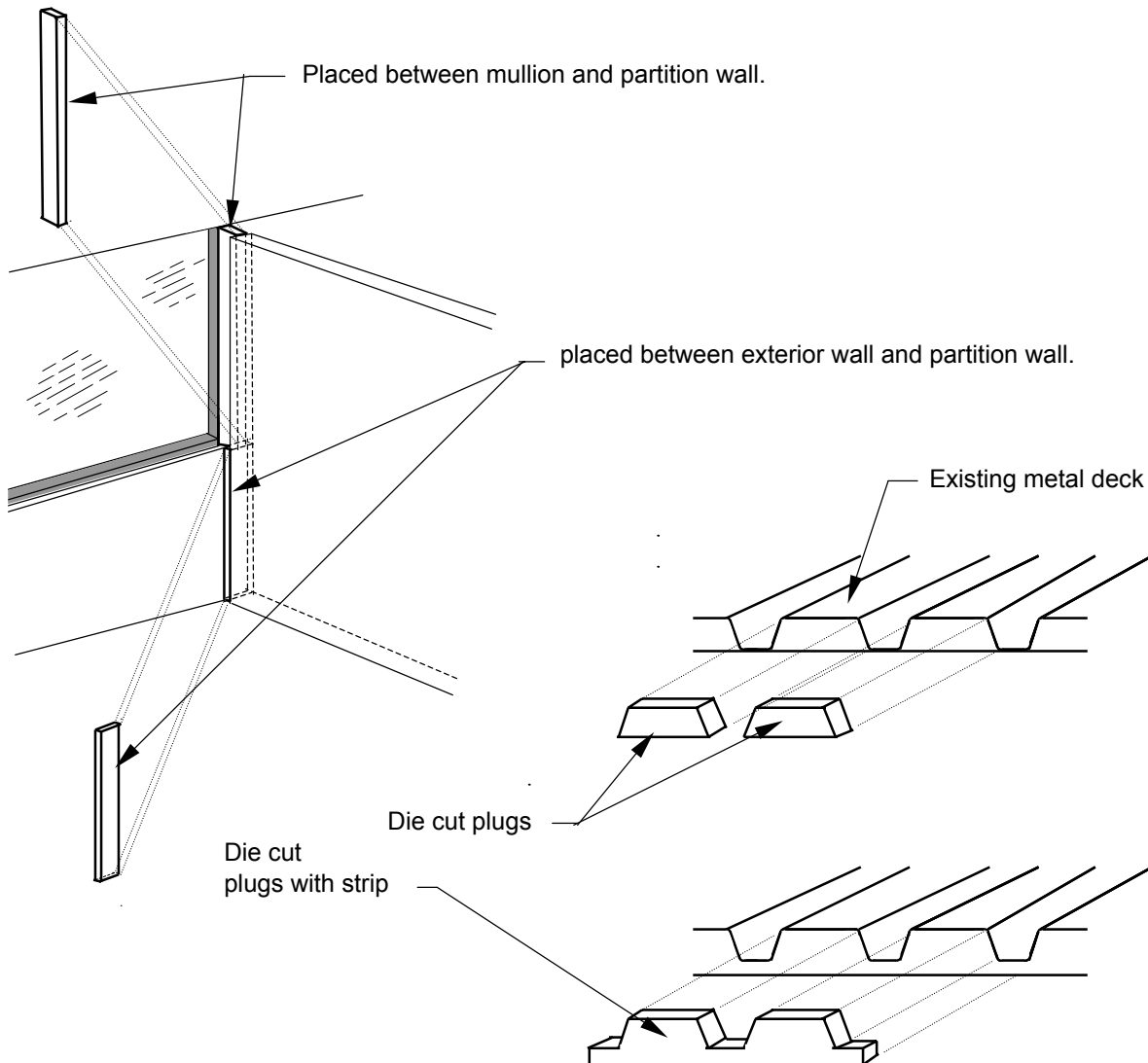


# Typical Partition/Deck Closure Installation Details

A variety of our products are used for partition and deck closures.

When ordering, oversize the material in thickness (distance from end of partition wall to the glass or mullion). Apply a bead (approx 1/4") of silicone sealant or urethane to the end of the partition wall that abuts the glass mullion. Place the bead 1/2" back from the side of the wall you are working from. Compress the closure and slide into place.

For metal deck flute plugs: Place a bead of silicone or urethane (approximate 1/4") 1/2" back from flute opening. Place bead on all our sides of flute. Compress plug and slide into place.



To the best of our knowledge this published information is accurate, however, to determine suitability of material/product for a specific application is the user's responsibility. Williams Products, Inc. shall not be liable for any loss or damage resulting from inappropriate usage.

**WILLIAMS PRODUCTS, INC.**

1750 MAPLE LAWN BOULEVARD - TROY MICHIGAN 48084 - PHONE (248) 643-6400 - TOLL FREE (800) 521-9594 - FAX (248) 643-71

[www.williamsproducts.net](http://www.williamsproducts.net)